

# Converting Colors

Yxy(66.8734, 0.3247, 0.3290)

Have a look what the booklet for  
Yxy(66.8734, 0.3247, 0.3290)  
contains.

<b>Yxy(66.9151, 0.3248, 0.3290)</b> .....	3
<b><i>Conversions</i></b> .....	4
<b><i>Details</i></b> .....	6
<b><i>Harmonies</i></b> .....	12
<b><i>Previews</i></b> .....	24
<b><i>Color Blindness Simulation</i></b> .....	27
<b><i>CSS Examples</i></b> .....	30

# Color

**Yxy(66.9151, 0.3248, 0.3290)**

# Conversions

## Conversions Part 1

Format	Color
Hex	E2D2D2
RGB	226, 210, 210
RGB Percent	89%, 82%, 82%
CMY	0.1134, 0.1765, 0.1764
CMYK	0.00, 0.07, 0.07, 0.11
HSL	360°, 22%, 86%
HSV	360°, 7%, 89%
XYZ	66.0609, 66.9151, 70.4134
YIQ	214.7840, 9.5360, 3.3920

# Conversions

## Conversions Part 2

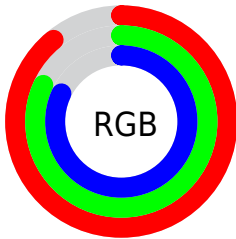
Format	Color
R <sub>Y</sub> B	226, 210, 210
Decimal	14865106
CIE Lab	85.46, 5.57, 1.98
CIE LCh	85, 5.909, 19.575
Yxy	66.9151, 0.3248, 0.3290
Android (android.graphics.Color)	4293055186 (0xFFE2D2D2)
YUV	214.7840, -2.3585, 9.8364
Hunter-Lab	81.8017, 0.9990, 6.2254

# Details

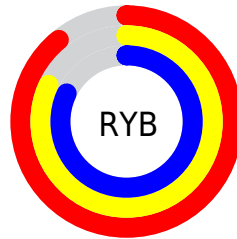
The Yxy color  $66.9151, 0.3248, 0.3290$  is a light color, and the websafe version is hex `CCCCCC`. A complement of this color would be  $73.6238, 0.3017, 0.3290$ , and the grayscale version is  $67.8203, 0.3127, 0.3290$ .

A 20% lighter version of the original color is  $100.0000, 0.3127, 0.3290$ , and  $34.8352, 0.3276, 0.3290$  is the 20% darker color. If you saturate the color by 10%, you get  $55.4870, 0.3454, 0.3290$ , and if you desaturate by 10%, it is  $80.0845, 0.3083, 0.3290$ .

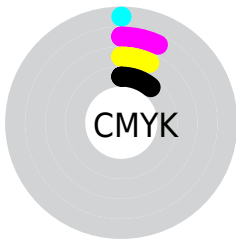
# Distribution



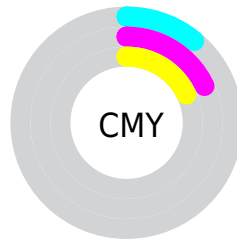
- Red (89%)
- Green (82%)
- Blue (82%)



- Red (89%)
- Yellow (82%)
- Blue (82%)



- Cyan (0%)
- Magenta (7%)
- Yellow (7%)
- Black (11%)



- Cyan (11%)
- Magenta (18%)
- Yellow (18%)

# Brightness & Saturation Gradients

These gradients show how the Yxy color 66.9151, 0.3248, 0.3290 changes by changing the brightness by 10 percent. The first figure shows a shift by +10% for each color and the second figure -10%.

Similar to the brightness gradients but the following saturation gradients show a change of the Yxy color 66.9151, 0.3248, 0.3290 by changing the saturation by 10% instead.



66.9151, 0.3248,  
0.3290

66.9151, 0.3248,  
0.3290

449.6425, 0.3191,  
0.3290

49.0156, 0.3261,  
0.3290

114.7988, 0.3228,  
0.3290

34.6319, 0.3278,  
0.3290

145.5517, 0.3220,  
0.3290

23.3794, 0.3299,  
0.3289

181.3580, 0.3214,  
0.3290

14.8739, 0.3327,  
0.3289

222.6019, 0.3208,  
0.3290

8.7310, 0.3366,  
0.3288

269.6680, 0.3203,  
0.3290

4.5661, 0.3425,  
0.3286

322.9405, 0.3199,

1.9950, 0.3520,

0.3290

382.8039, 0.3195,  
0.3290

0.3283

0.6046, 0.3872,  
0.3295

0.0000, 0.0000,  
0.0000

66.9151, 0.3248,  
0.3290

66.9151, 0.3248,  
0.3290

55.4870, 0.3454,  
0.3290

80.0845, 0.3083,  
0.3290

45.7189, 0.3712,  
0.3290

94.9203, 0.2953,  
0.3289

37.5365, 0.4032,  
0.3291

30.8560, 0.4419,  
0.3292

■ 25.5862, 0.4867,  
0.3293

■ 21.6260, 0.5349,  
0.3294

■ 18.8608, 0.5805,  
0.3296

■ 17.1563, 0.6161,  
0.3297

■ 16.3370, 0.6360,  
0.3299

# Harmonies

## Analogous

The Analogous color harmony consists of three colors that are next to each other on the color wheel.



66.9151, 0.3192, 0.3228



66.9151, 0.3248, 0.3290



66.9151, 0.3271, 0.3353

# Triad

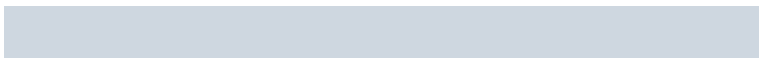
The Triadic color harmony groups three colors that are evenly spaced from another and form a triangle on the color wheel.



66.9151, 0.3248, 0.3290



66.9151, 0.3134, 0.3401



66.9151, 0.3001, 0.3180

# Complementary

The Complementary color scheme is a pair of colors which are on the opposite of each other on the color wheel.



66.9151, 0.3248, 0.3290



73.6238, 0.3017, 0.3290

# Split Complementary

Split-complementary colors differ from the complementary color scheme. The scheme consists of three colors, the original color and two neighbors of the complement color.



66.9151, 0.2985, 0.3225



66.9151, 0.3248, 0.3290



66.9151, 0.3062, 0.3353

# Square

The Square scheme is like the rectangle color scheme, but the four colors are evenly spaced on the color wheel.



66.9151, 0.3248, 0.3290



66.9151, 0.3205, 0.3418



66.9151, 0.3008, 0.3289



66.9151, 0.3049, 0.3165



# Rectangle

The Rectangle color scheme consists of four colors that form a rectangle on the color wheel.



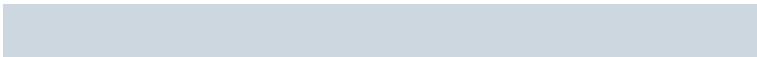
66.9151, 0.3248, 0.3290



66.9151, 0.3265, 0.3387



66.9151, 0.3008, 0.3289



66.9151, 0.2991, 0.3192

# Sweetspot

The Sweet Spot groups the original color and five complimentary colors.



66.9180, 0.3248, 0.3290



96.4655, 0.3159, 0.3290



67.7159, 0.3133, 0.3116



20.6846, 0.3158, 0.3290



0.0000, 0.0000, 0.0000



21.4041, 0.3127, 0.3290

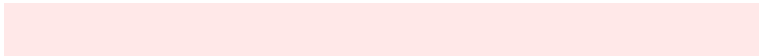


# Same Dimension

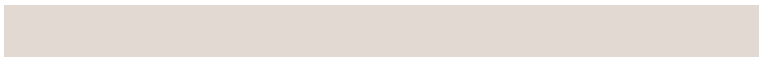
The Same Dimension uses a secret algorithm to generate beautiful new colors.



66.9180, 0.3248, 0.3290



84.8329, 0.3284, 0.3290



70.8501, 0.3240, 0.3375



13.7010, 0.3292, 0.3290



9.2250, 0.6399, 0.3299



0.6396, 0.6392, 0.3295

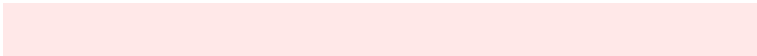


# Inverse Universe

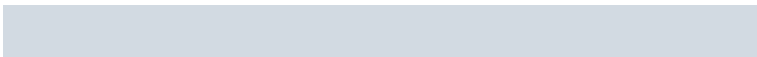
The Inverse Universe completely reimagines the original color for something new.



66.9180, 0.3248, 0.3290



84.8329, 0.3284, 0.3290



69.4896, 0.3018, 0.3204



13.7010, 0.3292, 0.3290



9.2250, 0.6399, 0.3299

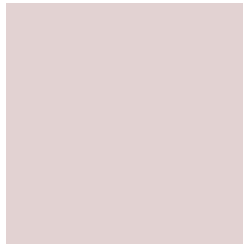


0.6396, 0.6392, 0.3295



# Previews

## White Background



This preview shows how the Yxy color 66.9151, 0.3248, 0.3290 looks on a white background.

## Color Contrast Check

Large Text (above 18pt) WCAG AA × Fail

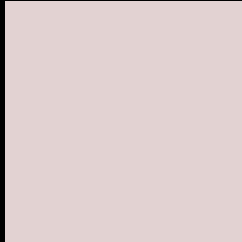
Any Text WCAG AA × Fail

Large Text (above 18pt) WCAG AAA × Fail

Any Text WCAG AAA × Fail



# Black Background



This preview shows how the Yxy color 66.9151, 0.3248, 0.3290 looks on a black background.

## Color Contrast Check

Large Text (above 18pt) WCAG AA ✓ Pass

Any Text WCAG AA ✓ Pass

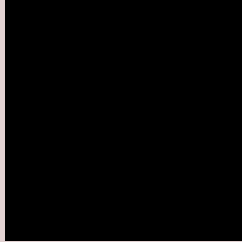
Large Text (above 18pt) WCAG AAA ✓ Pass

Any Text WCAG AAA ✓ Pass

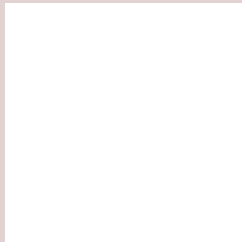
If you want to check with other color combinations, try the [Color Contrast Checker](#).

**Yxy 66.9151, 0.3248, 0.3290**

## **Background**



This preview shows how black text looks on a background with the Yxy color 66.9151, 0.3248, 0.3290.



This preview shows how white text looks on a background with the Yxy color 66.9151, 0.3248, 0.3290.

# Color Blindness Simulation

Color vision deficiency is a very complex topic, and I could not describe the different causes any better than Wikipedia does, so if you want to learn more, you should check out their [article about color blindness](#).

## Dichromacy



### Original Color

66.9151, 0.3248, 0.3290

### Protanopia

67.1971, 0.3178, 0.3312

### Deuteranopia

66.9910, 0.3313, 0.3248



## Tritanopia

66.9875, 0.3165, 0.3118

# Trichromacy



## Original Color

66.9151, 0.3248, 0.3290

## Protanomaly

67.1623, 0.3201, 0.3301

## Deuteranomaly

66.9707, 0.3288, 0.3258

## Tritanomaly

67.0463, 0.3192, 0.3182

# Monochromacy



## Original Color

66.9151, 0.3248, 0.3290

## Achromatopsia

67.9542, 0.3127, 0.3290

## Achromatomaly

67.4527, 0.3171, 0.3290

# CSS Examples

## Text

The CSS property to change the color of the text to Yxy 66.9151, 0.3248, 0.3290 is called "color". The color property can be set on classes, ids or directly on the HTML element.

This example shows how text in the color `rgb(226, 210, 210)` looks like.

```
.text, #text, p{  
    color:rgb(226, 210, 210)  
}
```

If you want to add a text shadow in that color use the text-shadow property, you can generate a text shadow directly with our [CSS Text Shadow Generator](#).

Here you see how black text with a 4 pixel rgb(226, 210, 210) colored shadow looks like.

```
.shadow{ text-shadow: 4px 4px 2px rgb(226, 210, 210) }
```

## Border

The CSS property to change the border of an element to Yxy 66.9151, 0.3248, 0.3290 is called "border". The border property can be set on classes, ids or directly on the HTML element.

This example shows the color as border, it can be applied via the CSS property "border" or "border-color".

```
.border, #border, table{ border:4px solid rgb(226, 210, 210) }
```

If only the border color should be changed use the property border-color.

```
.border{ border-color:rgb(226, 210, 210) }
```

If you want to add a box shadow in that color use:

Here you see how a box with a 4 pixel rgb(226, 210, 210) colored shadow looks like.

```
.boxshadow{ -moz-box-shadow:4px 4px 4px  
4px rgb(226, 210, 210); -webkit-box-  
shadow:4px 4px 4px 4px rgb(226, 210, 210);  
box-shadow:4px 4px 4px 4px rgb(226, 210,  
210) }
```



# Background

The CSS property to change the background color of an element to Yxy 66.9151, 0.3248, 0.3290 is called "background". The background property can be set on classes, ids or directly on the HTML element.

```
.background, #background, body{  
background: rgb(226, 210, 210) }
```

If only the background color should be changed can be used:

```
.background{ background-color: rgb(226,  
210, 210) }
```

This example shows the color as background, it is applied via the CSS property "background".

To optimize and compress your CSS code, you can use our [online CSS compressor and optimizer](#) based on csstidy. If you want to create a linear or radial gradient as background or border, check our [CSS Gradient Generator](#).

Hey! You found this booklet interesting? Support Converting Colors with the new Membership Option!

The pro membership hides all ads, plus gives you double the colors in the color bucket, and more awesome pro features!

**[Learn more, Memberships starting at \\$2.50/m!](#)**

**Follow me  
on Twitter!**

@ConvertingColor