

Converting Colors

Yxy(66.9504, 0.3191, 0.3179)

Have a look what the booklet for
Yxy(66.9504, 0.3191, 0.3179)
contains.

Yxy(67.0463, 0.3192, 0.3182)	3
Conversions	4
Details	6
Harmonies	12
Previews	24
Color Blindness Simulation	27
CSS Examples	30

Color

Yxy(67.0463, 0.3192, 0.3182)

Conversions

Conversions Part 1

Format	Color
Hex	E3D1DB
RGB	227, 209, 219
RGB Percent	89%, 82%, 86%
CMY	0.1099, 0.1803, 0.1412
CMYK	0.00, 0.08, 0.04, 0.11
HSL	327°, 24%, 85%
HSV	327°, 8%, 89%
XYZ	67.2570, 67.0463, 76.4016
YIQ	215.5220, 7.5180, 6.9260

Conversions

Conversions Part 2

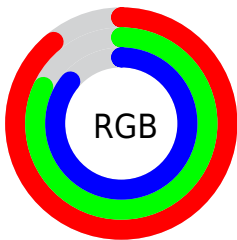
Format	Color
RYP	227, 209, 219
Decimal	14930395
CIELab	85.53, 7.94, -2.68
CIElCh	86, 8.378, 341.372
Yxy	67.0463, 0.3192, 0.3182
Android (android.graphics.Color)	4293120475 (0xFFE3D1DB)
YUV	215.5220, 1.7147, 10.0662
Hunter-Lab	81.8818, 3.3252, 1.9954

Details

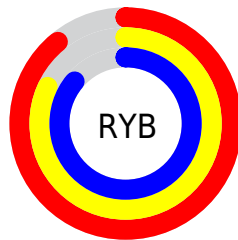
The Yxy color **67.0463, 0.3192, 0.3182** is a light color, and the websafe version is hex **CCCCCC**. A complement of this color would be **73.4921, 0.3067, 0.3401**, and the grayscale version is **68.3109, 0.3127, 0.3290**.

A 20% lighter version of the original color is **100.0000, 0.3127, 0.3290**, and **34.8937, 0.3212, 0.3163** is the 20% darker color. If you saturate the color by 10%, you get **56.1767, 0.3289, 0.3039**, and if you desaturate by 10%, it is **79.5407, 0.3112, 0.3318**.

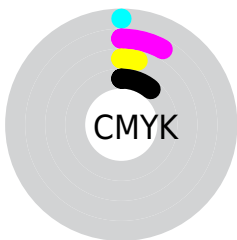
Distribution



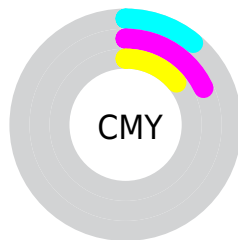
- Red (89%)
- Green (82%)
- Blue (86%)



- Red (89%)
- Yellow (82%)
- Blue (86%)



- Cyan (0%)
- Magenta (8%)
- Yellow (4%)
- Black (11%)



- Cyan (11%)
- Magenta (18%)
- Yellow (14%)

Brightness & Saturation Gradients

These gradients show how the Yxy color 67.0463, 0.3192, 0.3182 changes by changing the brightness by 10 percent. The first figure shows a shift by +10% for each color and the second figure -10%.

Similar to the brightness gradients but the following saturation gradients show a change of the Yxy color 67.0463, 0.3192, 0.3182 by changing the saturation by 10% instead.

67.0463, 0.3192,
0.3182

67.0463, 0.3192,
0.3182

450.1096, 0.3162,
0.3232

49.1223, 0.3199,
0.3170

114.9868, 0.3181,
0.3200

34.7165, 0.3208,
0.3156

145.7719, 0.3177,
0.3206

23.4446, 0.3219,
0.3138

181.6130, 0.3174,
0.3212

14.9221, 0.3233,
0.3114

222.8943, 0.3171,
0.3217

8.7647, 0.3253,
0.3080

270.0001, 0.3168,
0.3222

4.5880, 0.3283,
0.3032

323.3151, 0.3166,

2.0076, 0.3330,

0.3226

0.2955

383.2234, 0.3164,
0.3229

0.6119, 0.3461,
0.2731

0.0000, 0.0000,
0.0000

67.0463, 0.3192,
0.3182

67.0463, 0.3192,
0.3182

56.1767, 0.3289,
0.3039

79.5407, 0.3112,
0.3318

46.8557, 0.3404,
0.2891

93.7145, 0.3045,
0.3444

39.0144, 0.3540,
0.2744

94.7040, 0.2989,
0.3347

32.5748, 0.3698,
0.2603

95.0668, 0.2958,
0.3290

■ 27.4519, 0.3878,
0.2480

■ 23.5515, 0.4076,
0.2385

■ 20.7665, 0.4287,
0.2331

■ 18.9710, 0.4501,
0.2328

■ 17.9903, 0.4708,
0.2378

Harmonies

Analogous

The Analogous color harmony consists of three colors that are next to each other on the color wheel.



67.0463, 0.3087, 0.3128



67.0463, 0.3192, 0.3182



67.0463, 0.3281, 0.3264

Triad

The Triadic color harmony groups three colors that are evenly spaced from another and form a triangle on the color wheel.



67.0463, 0.3192, 0.3182



67.0463, 0.3260, 0.3469



67.0463, 0.2931, 0.3220

Complementary

The Complementary color scheme is a pair of colors which are on the opposite of each other on the color wheel.



67.0463, 0.3192, 0.3182



73.4921, 0.3067, 0.3401

Split Complementary

Split-complementary colors differ from the complementary color scheme. The scheme consists of three colors, the original color and two neighbors of the complement color.



67.0463, 0.2975, 0.3314



67.0463, 0.3192, 0.3182



67.0463, 0.3165, 0.3460

Square

The Square scheme is like the rectangle color scheme, but the four colors are evenly spaced on the color wheel.



67.0463, 0.3192, 0.3182



67.0463, 0.3320, 0.3430



67.0463, 0.3061, 0.3402



67.0463, 0.2937, 0.3148

Rectangle

The Rectangle color scheme consists of four colors that form a rectangle on the color wheel.



67.0463, 0.3192, 0.3182



67.0463, 0.3318, 0.3325



67.0463, 0.3061, 0.3402



67.0463, 0.2940, 0.3250

Sweetspot

The Sweet Spot groups the original color and five complimentary colors.



67.0492, 0.3192, 0.3182



96.6438, 0.3143, 0.3263



65.8743, 0.3062, 0.3092



20.7209, 0.3142, 0.3264



0.0000, 0.0000, 0.0000



21.4041, 0.3127, 0.3290

Same Dimension

The Same Dimension uses a secret algorithm to generate beautiful new colors.



67.0492, 0.3192, 0.3182



85.5810, 0.3202, 0.3166



66.5994, 0.3254, 0.3277



14.5012, 0.3206, 0.3160



10.4264, 0.4722, 0.2375



0.7891, 0.4441, 0.2220

Inverse Universe

The Inverse Universe completely reimagines the original color for something new.



67.0492, 0.3192, 0.3182



85.5810, 0.3202, 0.3166



73.9607, 0.3012, 0.3303



14.5012, 0.3206, 0.3160



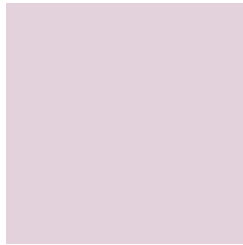
10.4264, 0.4722, 0.2375



0.7891, 0.4441, 0.2220

Previews

White Background



This preview shows how the Yxy color 67.0463, 0.3192, 0.3182 looks on a white background.

Color Contrast Check

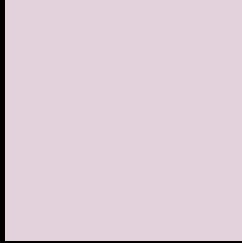
Large Text (above 18pt) WCAG AA × Fail

Any Text WCAG AA × Fail

Large Text (above 18pt) WCAG AAA × Fail

Any Text WCAG AAA × Fail

Black Background



This preview shows how the Yxy color 67.0463, 0.3192, 0.3182 looks on a black background.

Color Contrast Check

Large Text (above 18pt) WCAG AA ✓ Pass

Any Text WCAG AA ✓ Pass

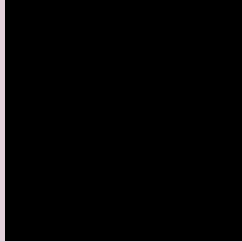
Large Text (above 18pt) WCAG AAA ✓ Pass

Any Text WCAG AAA ✓ Pass

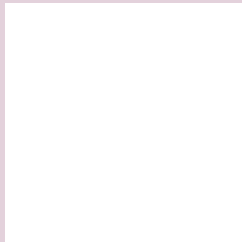
If you want to check with other color combinations, try the [Color Contrast Checker](#).

Yxy 67.0463, 0.3192, 0.3182

Background



This preview shows how black text looks on a background with the Yxy color 67.0463, 0.3192, 0.3182.

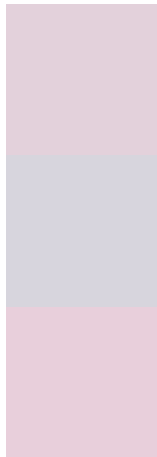


This preview shows how white text looks on a background with the Yxy color 67.0463, 0.3192, 0.3182.

Color Blindness Simulation

Color vision deficiency is a very complex topic, and I could not describe the different causes any better than Wikipedia does, so if you want to learn more, you should check out their [article about color blindness](#).

Dichromacy



Original Color

67.0463, 0.3192, 0.3182

Protanopia

67.2560, 0.3088, 0.3201

Deuteranopia

66.8959, 0.3231, 0.3161



Tritanopia

66.9875, 0.3165, 0.3118

Trichromacy



Original Color

67.0463, 0.3192, 0.3182

Protanomaly

67.3143, 0.3124, 0.3202

Deuteranomaly

67.0492, 0.3215, 0.3172

Tritanomaly

66.8797, 0.3179, 0.3139

Monochromacy



Original Color

67.0463, 0.3192, 0.3182

Achromatopsia

68.6685, 0.3127, 0.3290

Achromatomaly

67.8139, 0.3151, 0.3246

CSS Examples

Text

The CSS property to change the color of the text to Yxy 67.0463, 0.3192, 0.3182 is called "color". The color property can be set on classes, ids or directly on the HTML element.

This example shows how text in the color `rgb(227, 209, 219)` looks like.

```
.text, #text, p{  
    color:rgb(227, 209, 219)  
}
```

If you want to add a text shadow in that color use the text-shadow property, you can generate a text shadow directly with our [CSS Text Shadow Generator](#).

Here you see how black text with a 4 pixel rgb(227, 209, 219) colored shadow looks like.

```
.shadow{ text-shadow: 4px 4px 2px rgb(227, 209, 219) }
```

Border

The CSS property to change the border of an element to Yxy 67.0463, 0.3192, 0.3182 is called "border". The border property can be set on classes, ids or directly on the HTML element.

This example shows the color as border, it can be applied via the CSS property "border" or "border-color".

```
.border, #border, table{ border:4px solid rgb(227, 209, 219) }
```

If only the border color should be changed use the property `border-color`.

```
.border{ border-color:rgb(227, 209, 219) }
```

If you want to add a box shadow in that color use:

Here you see how a box with a 4 pixel `rgb(227, 209, 219)` colored shadow looks like.

```
.boxshadow{ -moz-box-shadow:4px 4px 4px  
4px rgb(227, 209, 219); -webkit-box-  
shadow:4px 4px 4px 4px rgb(227, 209, 219);  
box-shadow:4px 4px 4px 4px rgb(227, 209,  
219) }
```


Background

The CSS property to change the background color of an element to Yxy 67.0463, 0.3192, 0.3182 is called "background". The background property can be set on classes, ids or directly on the HTML element.

```
.background, #background, body{  
background: rgb(227, 209, 219) }
```

If only the background color should be changed can be used:

```
.background{ background-color: rgb(227,  
209, 219) }
```

This example shows the color as background, it is applied via the CSS property "background".

To optimize and compress your CSS code, you can use our [online CSS compressor and optimizer](#) based on csstidy. If you want to create a linear or radial gradient as background or border, check our [CSS Gradient Generator](#).

Hey! You found this booklet interesting? Support Converting Colors with the new Membership Option!

The pro membership hides all ads, plus gives you double the colors in the color bucket, and more awesome pro features!

[Learn more, Memberships starting at \\$2.50/m!](#)

**Follow me
on Twitter!**

@ConvertingColor