

Converting Colors

Yxy(66.9721, 0.3291, 0.3390)

Have a look what the booklet for
Yxy(66.9721, 0.3291, 0.3390)
contains.

Yxy(66.8604, 0.3296, 0.3390)	3
Conversions	4
Details	6
Harmonies	12
Previews	24
Color Blindness Simulation	27
CSS Examples	30

Color

Yxy(66.8604, 0.3296, 0.3390)

Conversions

Conversions Part 1

Format	Color
Hex	E1D3CA
RGB	225, 211, 202
RGB Percent	88%, 83%, 79%
CMY	0.1177, 0.1725, 0.2078
CMYK	0.00, 0.06, 0.10, 0.12
HSL	23°, 28%, 84%
HSV	23°, 10%, 88%
XYZ	65.0065, 66.8604, 65.3615
YIQ	214.1600, 11.2330, 0.1690

Conversions

Conversions Part 2

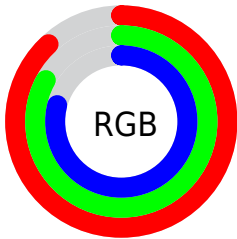
Format	Color
R _Y B	225, 217, 202
Decimal	14799818
CIE Lab	85.43, 3.32, 6.17
CIE LCh	85, 7.007, 61.738
Yxy	66.8604, 0.3296, 0.3390
Android (android.graphics.Color)	4292989898 (0xFFE1D3CA)
YUV	214.1600, -5.9949, 9.5067
Hunter-Lab	81.7682, -1.1853, 9.8443

Details

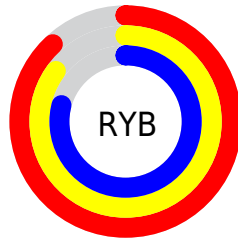
The Yxy color **66.8604, 0.3296, 0.3390** is a light color, and the websafe version is hex **CCCCCC**. A complement of this color would be **67.1071, 0.2969, 0.3188**, and the grayscale version is **67.3958, 0.3127, 0.3290**.

A 20% lighter version of the original color is **100.0000, 0.3127, 0.3290**, and **34.7981, 0.3341, 0.3421** is the 20% darker color. If you saturate the color by 10%, you get **59.3562, 0.3489, 0.3494**, and if you desaturate by 10%, it is **75.1056, 0.3130, 0.3292**.

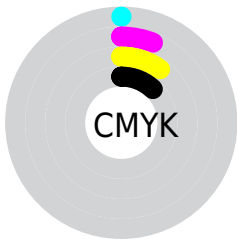
Distribution



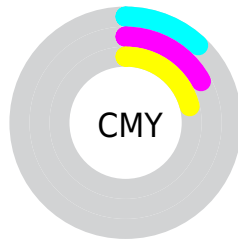
- Red (88%)
- Green (83%)
- Blue (79%)



- Red (88%)
- Yellow (85%)
- Blue (79%)



- Cyan (0%)
- Magenta (6%)
- Yellow (10%)
- Black (12%)



- Cyan (12%)
- Magenta (17%)
- Yellow (21%)

Brightness & Saturation Gradients

These gradients show how the Yxy color 66.8604, 0.3296, 0.3390 changes by changing the brightness by 10 percent. The first figure shows a shift by +10% for each color and the second figure -10%.

Similar to the brightness gradients but the following saturation gradients show a change of the Yxy color 66.8604, 0.3296, 0.3390 by changing the saturation by 10% instead.

66.8604, 0.3296,
0.3390

66.8604, 0.3296,
0.3390

449.4477, 0.3216,
0.3344

48.9712, 0.3315,
0.3401

114.7204, 0.3268,
0.3374

34.5966, 0.3338,
0.3414

145.4599, 0.3257,
0.3368

23.3523, 0.3367,
0.3431

181.2517, 0.3248,
0.3362

14.8539, 0.3407,
0.3453

222.4800, 0.3240,
0.3357

8.7169, 0.3462,
0.3483

269.5294, 0.3233,
0.3353

4.5570, 0.3543,
0.3528

322.7843, 0.3227,

1.9898, 0.3677,

0.3350

382.6289, 0.3221,
0.3346

0.3598

0.6015, 0.4417,
0.4071

0.0000, 0.0000,
0.0000

66.8604, 0.3296,
0.3390

66.8604, 0.3296,
0.3390

59.3562, 0.3489,
0.3494

75.1056, 0.3130,
0.3292

52.5632, 0.3713,
0.3601

84.1033, 0.2989,
0.3201

46.4622, 0.3970,
0.3708

92.9055, 0.2946,
0.3260

41.0297, 0.4259,
0.3807

94.7473, 0.2946,
0.3289

■ 36.2410, 0.4575,
0.3889

■ 32.0695, 0.4903,
0.3942

■ 28.4861, 0.5224,
0.3951

■ 25.4590, 0.5511,
0.3909

■ 22.9942, 0.5742,
0.3822

Harmonies

Analogous

The Analogous color harmony consists of three colors that are next to each other on the color wheel.



66.8604, 0.3287, 0.3321



66.8604, 0.3296, 0.3390



66.8604, 0.3259, 0.3434

Triad

The Triadic color harmony groups three colors that are evenly spaced from another and form a triangle on the color wheel.



66.8604, 0.3296, 0.3390



66.8604, 0.3020, 0.3335



66.8604, 0.3066, 0.3146

Complementary

The Complementary color scheme is a pair of colors which are on the opposite of each other on the color wheel.



66.8604, 0.3296, 0.3390



67.1071, 0.2969, 0.3188

Split Complementary

Split-complementary colors differ from the complementary color scheme. The scheme consists of three colors, the original color and two neighbors of the complement color.



66.8604, 0.2996, 0.3148



66.8604, 0.3296, 0.3390



66.8604, 0.2970, 0.3256

Square

The Square scheme is like the rectangle color scheme, but the four colors are evenly spaced on the color wheel.



66.8604, 0.3296, 0.3390



66.8604, 0.3099, 0.3403



66.8604, 0.2961, 0.3188



66.8604, 0.3154, 0.3181

Rectangle

The Rectangle color scheme consists of four colors that form a rectangle on the color wheel.



66.8604, 0.3296, 0.3390



66.8604, 0.3214, 0.3442



66.8604, 0.2961, 0.3188



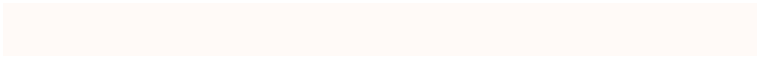
66.8604, 0.3040, 0.3142

Sweetspot

The Sweet Spot groups the original color and five complimentary colors.



66.8633, 0.3296, 0.3390



96.5820, 0.3174, 0.3319



63.2205, 0.3202, 0.3134



20.4803, 0.3187, 0.3327



0.0000, 0.0000, 0.0000



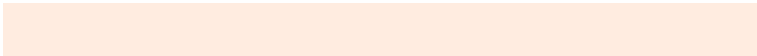
21.4041, 0.3127, 0.3290

Same Dimension

The Same Dimension uses a secret algorithm to generate beautiful new colors.



66.8633, 0.3296, 0.3390



86.8702, 0.3330, 0.3409



72.6827, 0.3282, 0.3512



14.5759, 0.3282, 0.3382



13.4624, 0.5715, 0.3844



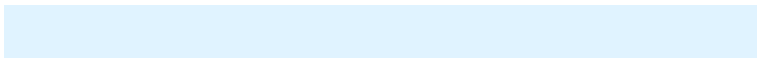
1.1037, 0.5430, 0.4070

Inverse Universe

The Inverse Universe completely reimagines the original color for something new.



67.1071, 0.2969, 0.3188



87.2479, 0.2940, 0.3168



61.5095, 0.2968, 0.3057



14.6248, 0.2981, 0.3196



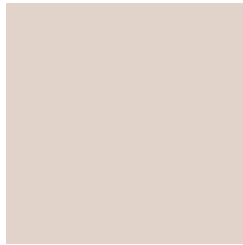
13.6684, 0.1878, 0.1959



1.1201, 0.1941, 0.2186

Previews

White Background



This preview shows how the Yxy color 66.8604, 0.3296, 0.3390 looks on a white background.

Color Contrast Check

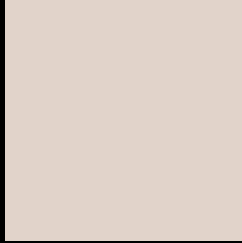
Large Text (above 18pt) WCAG AA × Fail

Any Text WCAG AA × Fail

Large Text (above 18pt) WCAG AAA × Fail

Any Text WCAG AAA × Fail

Black Background



This preview shows how the Yxy color 66.8604, 0.3296, 0.3390 looks on a black background.

Color Contrast Check

Large Text (above 18pt) WCAG AA ✓ Pass

Any Text WCAG AA ✓ Pass

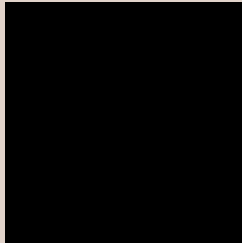
Large Text (above 18pt) WCAG AAA ✓ Pass

Any Text WCAG AAA ✓ Pass

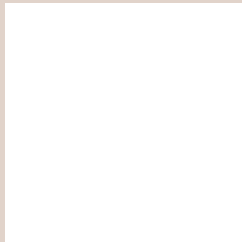
If you want to check with other color combinations, try the [Color Contrast Checker](#).

Yxy 66.8604, 0.3296, 0.3390

Background



This preview shows how black text looks on a background with the Yxy color 66.8604, 0.3296, 0.3390.

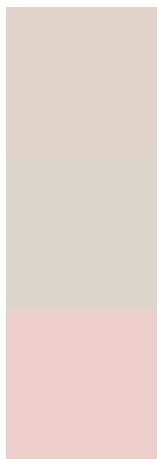


This preview shows how white text looks on a background with the Yxy color 66.8604, 0.3296, 0.3390.

Color Blindness Simulation

Color vision deficiency is a very complex topic, and I could not describe the different causes any better than Wikipedia does, so if you want to learn more, you should check out their [article about color blindness](#).

Dichromacy



Original Color

66.8604, 0.3296, 0.3390

Protanopia

67.1159, 0.3249, 0.3402

Deuteranopia

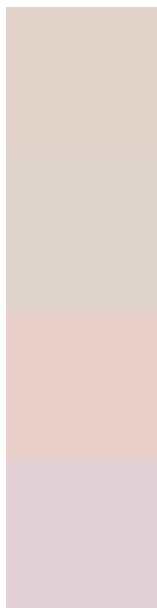
66.6316, 0.3397, 0.3323



Tritanopia

66.9875, 0.3165, 0.3118

Trichromacy



Original Color

66.8604, 0.3296, 0.3390

Protanomaly

66.9284, 0.3265, 0.3391

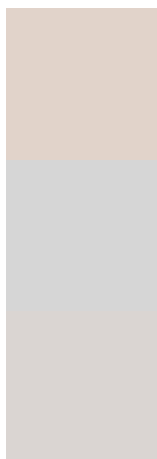
Deuteranomaly

66.7472, 0.3355, 0.3345

Tritanomaly

66.8897, 0.3213, 0.3214

Monochromacy



Original Color

66.8604, 0.3296, 0.3390

Achromatopsia

67.2443, 0.3127, 0.3290

Achromatomaly

67.1471, 0.3185, 0.3324

CSS Examples

Text

The CSS property to change the color of the text to Yxy 66.8604, 0.3296, 0.3390 is called "color". The color property can be set on classes, ids or directly on the HTML element.

This example shows how text in the color `rgb(225, 211, 202)` looks like.

```
.text, #text, p{  
    color:rgb(225, 211, 202)  
}
```

If you want to add a text shadow in that color use the text-shadow property, you can generate a text shadow directly with our [CSS Text Shadow Generator](#).

Here you see how black text with a 4 pixel rgb(225, 211, 202) colored shadow looks like.

```
.shadow{ text-shadow: 4px 4px 2px rgb(225, 211, 202) }
```

Border

The CSS property to change the border of an element to Yxy 66.8604, 0.3296, 0.3390 is called "border". The border property can be set on classes, ids or directly on the HTML element.

This example shows the color as border, it can be applied via the CSS property "border" or "border-color".

```
.border, #border, table{ border:4px solid rgb(225, 211, 202) }
```

If only the border color should be changed use the property `border-color`.

```
.border{ border-color:rgb(225, 211, 202) }
```

If you want to add a box shadow in that color use:

Here you see how a box with a 4 pixel `rgb(225, 211, 202)` colored shadow looks like.

```
.boxshadow{ -moz-box-shadow:4px 4px 4px  
4px rgb(225, 211, 202); -webkit-box-  
shadow:4px 4px 4px 4px rgb(225, 211, 202);  
box-shadow:4px 4px 4px 4px rgb(225, 211,  
202) }
```


Background

The CSS property to change the background color of an element to Yxy 66.8604, 0.3296, 0.3390 is called "background". The background property can be set on classes, ids or directly on the HTML element.

```
.background, #background, body{  
background: rgb(225, 211, 202) }
```

If only the background color should be changed can be used:

```
.background{ background-color: rgb(225,  
211, 202) }
```

This example shows the color as background, it is applied via the CSS property "background".

To optimize and compress your CSS code, you can use our [online CSS compressor and optimizer](#) based on csstidy. If you want to create a linear or radial gradient as background or border, check our [CSS Gradient Generator](#).

Hey! You found this booklet interesting? Support Converting Colors with the new Membership Option!

The pro membership hides all ads, plus gives you double the colors in the color bucket, and more awesome pro features!

[Learn more, Memberships starting at \\$2.50/m!](#)

**Follow me
on Twitter!**

@ConvertingColor