

Converting Colors

$Yxy(66.9735, 0.3429, 0.3391)$

Have a look what the booklet for
Yxy(66.9735, 0.3429, 0.3391)
contains.

Yxy(66.8800, 0.3433, 0.3388)	3
<i>Conversions</i>	4
<i>Details</i>	6
<i>Harmonies</i>	12
<i>Previews</i>	24
<i>Color Blindness Simulation</i>	27
<i>CSS Examples</i>	30

Color

Yxy(66.8800, 0.3433, 0.3388)

Conversions

Conversions Part 1

Format	Color
Hex	EECF6
RGB	238, 207, 198
RGB Percent	93%, 81%, 78%
CMY	0.0666, 0.1882, 0.2236
CMYK	0.00, 0.13, 0.17, 0.07
HSL	14°, 54%, 85%
HSV	14°, 17%, 93%
XYZ	67.7683, 66.8800, 62.7543
YIQ	215.2430, 21.3650, 3.7730

Conversions

Conversions Part 2

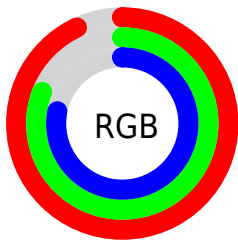
Format	Color
RYB	238, 210, 198
Decimal	15650758
CIELab	85.44, 9.43, 8.46
CIELCh	85, 12.668, 41.912
Yxy	66.8800, 0.3433, 0.3388
Android (android.graphics.Color)	4293840838 (0xFFEECF6)
YUV	215.2430, -8.5008, 19.9579
Hunter-Lab	81.7802, 4.8012, 11.7498

Details

The Yxy color **66.8800, 0.3433, 0.3388** is a light color, and the websafe version is hex **FFCCCC**. A complement of this color would be **74.2174, 0.2868, 0.3190**, and the grayscale version is **68.1783, 0.3127, 0.3290**.

A 20% lighter version of the original color is **100.0000, 0.3127, 0.3290**, and **34.7412, 0.3513, 0.3417** is the 20% darker color. If you saturate the color by 10%, you get **57.4495, 0.3666, 0.3451**, and if you desaturate by 10%, it is **77.5328, 0.3240, 0.3328**.

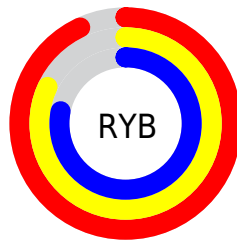
Distribution



Red (93%)

Green (81%)

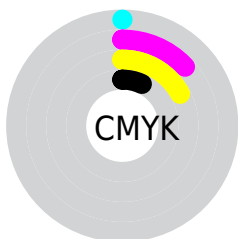
Blue (78%)



Red (93%)

Yellow (82%)

Blue (78%)

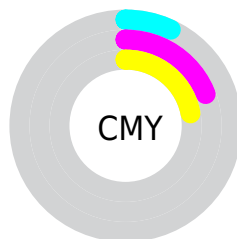


Cyan (0%)

Magenta (13%)

Yellow (17%)

Black (7%)



Cyan (7%)


Magenta (19%)


Yellow (22%)

Brightness & Saturation Gradients


These gradients show how the Yxy color 66.8800, 0.3433, 0.3388 changes by changing the brightness by 10 percent. The first figure shows a shift by +10% for each color and the second figure -10%.

Similar to the brightness gradients but the following saturation gradients show a change of the Yxy color 66.8800, 0.3433, 0.3388 by changing the saturation by 10% instead.

 66.8800, 0.3433,
0.3388

 66.8800, 0.3433,
0.3388


449.5175, 0.3288,
0.3344

 48.9871, 0.3467,
0.3398


114.7484, 0.3382,
0.3373

 34.6093, 0.3509,
0.3410


145.4928, 0.3363,
0.3367

 23.3620, 0.3563,
0.3425


181.2898, 0.3346,
0.3362

 14.8611, 0.3635,
0.3444

222.5237, 0.3331,
0.3357

 8.7219, 0.3736,
0.3469

269.5791, 0.3319,
0.3353

 4.5603, 0.3884,
0.3503

322.8402, 0.3307,

 1.9916, 0.4128,

0.3350

0.3549

382.6916, 0.3297,
0.3347

0.6026, 0.5462,
0.4099

0.0000, 0.0000,
0.0000

66.8800, 0.3433,
0.3388

66.8800, 0.3433,
0.3388

57.4495, 0.3666,
0.3451

77.5328, 0.3240,
0.3328

49.1884, 0.3943,
0.3514

89.4404, 0.3079,
0.3273

42.0534, 0.4269,
0.3573

96.9200, 0.3023,
0.3290

35.9947, 0.4640,
0.3621

■ 30.9590, 0.5042,
0.3648

■ 26.8880, 0.5446,
0.3645

■ 23.7173, 0.5808,
0.3602

■ 21.3732, 0.6082,
0.3523

■ 20.7816, 0.6153,
0.3497

Harmonies

Analogous

The Analogous color harmony consists of three colors that are next to each other on the color wheel.



66.8800, 0.3362, 0.3253



66.8800, 0.3433, 0.3388



66.8800, 0.3419, 0.3502

Triad

The Triadic color harmony groups three colors that are evenly spaced from another and form a triangle on the color wheel.



66.8800, 0.3433, 0.3388



66.8800, 0.3023, 0.3459



66.8800, 0.2928, 0.3026

Complementary

The Complementary color scheme is a pair of colors which are on the opposite of each other on the color wheel.



66.8800, 0.3433, 0.3388



74.2174, 0.2868, 0.3190

Split Complementary

Split-complementary colors differ from the complementary color scheme. The scheme consists of three colors, the original color and two neighbors of the complement color.



66.8800, 0.2842, 0.3073



66.8800, 0.3433, 0.3388



66.8800, 0.2896, 0.3322

Square

The Square scheme is like the rectangle color scheme, but the four colors are evenly spaced on the color wheel.



66.8800, 0.3433, 0.3388



66.8800, 0.3180, 0.3548



66.8800, 0.2831, 0.3180



66.8800, 0.3068, 0.3048

Rectangle

The Rectangle color scheme consists of four colors that form a rectangle on the color wheel.



66.8800, 0.3433, 0.3388



66.8800, 0.3365, 0.3550



66.8800, 0.2831, 0.3180



66.8800, 0.2892, 0.3034

Sweetspot

The Sweet Spot groups the original color and five complimentary colors.



66.8830, 0.3433, 0.3388



93.0641, 0.3209, 0.3318



64.2383, 0.3210, 0.2960



19.7173, 0.3221, 0.3322



0.0000, 0.0000, 0.0000



21.4041, 0.3127, 0.3290

Same Dimension

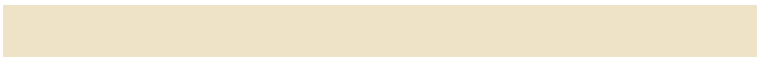
The Same Dimension uses a secret algorithm to generate beautiful new colors.



66.8830, 0.3433, 0.3388



74.4682, 0.3504, 0.3408



77.0170, 0.3399, 0.3594



16.3362, 0.3288, 0.3344



11.7511, 0.6128, 0.3517



1.1222, 0.5878, 0.3715

Inverse Universe

The Inverse Universe completely reimagines the original color for something new.



74.2174, 0.2868, 0.3190



84.4668, 0.2819, 0.3169



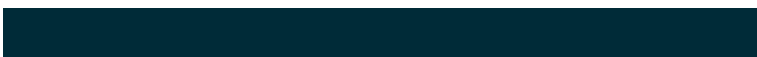
63.9401, 0.2858, 0.2967



17.2899, 0.2981, 0.3236



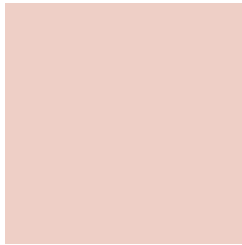
22.8649, 0.2041, 0.2547



2.0483, 0.2071, 0.2656

Previews

White Background



This preview shows how the Yxy color 66.8800, 0.3433, 0.3388 looks on a white background.

Color Contrast Check

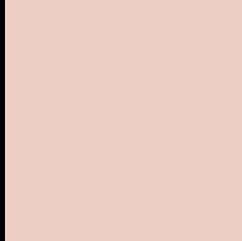
Large Text (above 18pt) WCAG AA × Fail

Any Text WCAG AA × Fail

Large Text (above 18pt) WCAG AAA × Fail

Any Text WCAG AAA × Fail

Black Background



This preview shows how the Yxy color 66.8800, 0.3433, 0.3388 looks on a black background.

Color Contrast Check

Large Text (above 18pt) WCAG AA ✓ Pass

Any Text WCAG AA ✓ Pass

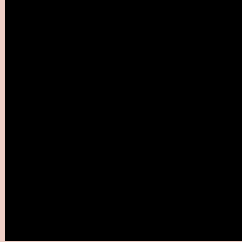
Large Text (above 18pt) WCAG AAA ✓ Pass

Any Text WCAG AAA ✓ Pass

If you want to check with other color combinations, try the [Color Contrast Checker](#).

Yxy 66.8800, 0.3433, 0.3388

Background



This preview shows how black text looks on a background with the Yxy color 66.8800, 0.3433, 0.3388.

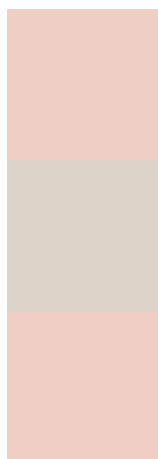


This preview shows how white text looks on a background with the Yxy color 66.8800, 0.3433, 0.3388.

Color Blindness Simulation

Color vision deficiency is a very complex topic, and I could not describe the different causes any better than Wikipedia does, so if you want to learn more, you should check out their [article about color blindness](#).

Dichromacy



Original Color

66.8800, 0.3433, 0.3388

Protanopia

67.0212, 0.3263, 0.3425

Deuteranopia

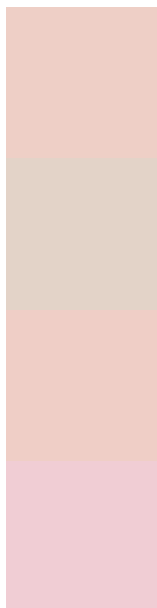
66.7451, 0.3450, 0.3377



Tritanopia

67.0538, 0.3296, 0.3122

Trichromacy



Original Color

66.8800, 0.3433, 0.3388

Protanomaly

67.0896, 0.3326, 0.3412

Deuteranomaly

66.5706, 0.3442, 0.3377

Tritanomaly

66.9414, 0.3346, 0.3216

Monochromacy



Original Color

66.8800, 0.3433, 0.3388

Achromatopsia

67.9542, 0.3127, 0.3290

Achromatomaly

67.3784, 0.3230, 0.3323

CSS Examples

Text

The CSS property to change the color of the text to Yxy 66.8800, 0.3433, 0.3388 is called "color". The color property can be set on classes, ids or directly on the HTML element.

This example shows how text in the color `rgb(238, 207, 198)` looks like.

```
.text, #text, p{  
    color:rgb(238, 207, 198)  
}
```

If you want to add a text shadow in that color use the text-shadow property, you can generate a text shadow directly with our [CSS Text Shadow Generator](#).

Here you see how black text with a 4 pixel rgb(238, 207, 198) colored shadow looks like.

```
.shadow{ text-shadow: 4px 4px 2px rgb(238, 207, 198) }
```

Border

The CSS property to change the border of an element to Yxy 66.8800, 0.3433, 0.3388 is called "border". The border property can be set on classes, ids or directly on the HTML element.

This example shows the color as border, it can be applied via the CSS property "border" or "border-color".

```
.border, #border, table{ border:4px solid rgb(238, 207, 198) }
```

If only the border color should be changed use the property `border-color`.

```
.border{ border-color:rgb(238, 207, 198) }
```

If you want to add a box shadow in that color use:

Here you see how a box with a 4 pixel `rgb(238, 207, 198)` colored shadow looks like.

```
.boxshadow{ -moz-box-shadow:4px 4px 4px  
4px rgb(238, 207, 198); -webkit-box-  
shadow:4px 4px 4px 4px rgb(238, 207, 198);  
box-shadow:4px 4px 4px 4px rgb(238, 207,  
198) }
```


Background

The CSS property to change the background color of an element to Yxy 66.8800, 0.3433, 0.3388 is called "background". The background property can be set on classes, ids or directly on the HTML element.

```
.background, #background, body{  
background: rgb(238, 207, 198) }
```

If only the background color should be changed can be used:

```
.background{ background-color: rgb(238,  
207, 198) }
```

This example shows the color as background, it is applied via the CSS property "background".

To optimize and compress your CSS code, you can use our [online CSS compressor and optimizer](#) based on csstidy. If you want to create a linear or radial gradient as background or border, check our [CSS Gradient Generator](#).

Hey! You found this booklet interesting? Support Converting Colors with the new Membership Option!

The pro membership hides all ads, plus gives you double the colors in the color bucket, and more awesome pro features!

[Learn more, Memberships starting at \\$2.50/m!](#)

**Follow me
on Twitter!**

@ConvertingColor