

Converting Colors

$Y_{xy}(67.0300, 0.3401, 0.3375)$

Have a look what the booklet for
Yxy(67.0300, 0.3401, 0.3375)
contains.

Yxy(67.1147, 0.3400, 0.3377)	3
Conversions	4
Details	6
Harmonies	12
Previews	24
Color Blindness Simulation	27
CSS Examples	30

Color

Yxy(67.1147, 0.3400, 0.3377)

Conversions

Conversions Part 1

Format	Color
Hex	ECD0C8
RGB	236, 208, 200
RGB Percent	93%, 82%, 78%
CMY	0.0746, 0.1843, 0.2156
CMYK	0.00, 0.12, 0.15, 0.07
HSL	13°, 49%, 85%
HSV	13°, 15%, 93%
XYZ	67.5718, 67.1147, 64.0541
YIQ	215.4600, 19.2560, 3.4480

Conversions

Conversions Part 2

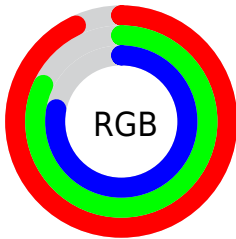
Format	Color
R _Y B	236, 210, 200
Decimal	15519944
CIE Lab	85.56, 8.48, 7.53
CIE LCh	86, 11.341, 41.572
Yxy	67.1147, 0.3400, 0.3377
Android (android.graphics.Color)	4293710024 (0xFFECD0C8)
YUV	215.4600, -7.6218, 18.0136
Hunter-Lab	81.9236, 3.8633, 10.9890

Details

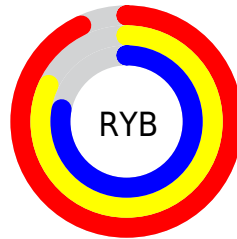
The Yxy color $67.1147, 0.3400, 0.3377$ is a light color, and the websafe version is hex `FFCCCC`. A complement of this color would be $73.8285, 0.2893, 0.3201$, and the grayscale version is $68.3278, 0.3127, 0.3290$.

A 20% lighter version of the original color is $100.0000, 0.3127, 0.3290$, and $34.8898, 0.3470, 0.3404$ is the 20% darker color. If you saturate the color by 10%, you get $57.6561, 0.3626, 0.3438$, and if you desaturate by 10%, it is $77.7862, 0.3212, 0.3319$.

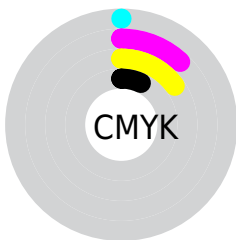
Distribution



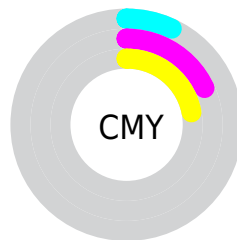
- Red (93%)
- Green (82%)
- Blue (78%)



- Red (93%)
- Yellow (82%)
- Blue (78%)



- Cyan (0%)
- Magenta (12%)
- Yellow (15%)
- Black (7%)





- Cyan (7%)
- Magenta (18%)
- Yellow (22%)

Brightness & Saturation Gradients

These gradients show how the Yxy color 67.1147, 0.3400, 0.3377 changes by changing the brightness by 10 percent. The first figure shows a shift by +10% for each color and the second figure -10%.

Similar to the brightness gradients but the following saturation gradients show a change of the Yxy color 67.1147, 0.3400, 0.3377 by changing the saturation by 10% instead.

 67.1147, 0.3400,
0.3377

 67.1147, 0.3400,
0.3377

450.3529, 0.3271,
0.3338

 49.1778, 0.3430,
0.3386

115.0847, 0.3355,
0.3363

 34.7606, 0.3468,
0.3397


145.8867, 0.3337,
0.3358

 23.4785, 0.3516,
0.3410


181.7459, 0.3322,
0.3354

 14.9472, 0.3580,
0.3427

223.0466, 0.3309,
0.3350

 8.7824, 0.3669,
0.3450

270.1733, 0.3298,
0.3346

 4.5995, 0.3802,
0.3481

323.5103, 0.3288,

 2.0142, 0.4018,

0.3343

0.3526

383.4420, 0.3279,
0.3340

0.6157, 0.5104,
0.3966

0.0000, 0.0000,
0.0000

67.1147, 0.3400,
0.3377

67.1147, 0.3400,
0.3377

57.6561, 0.3626,
0.3438

77.7862, 0.3212,
0.3319

49.3584, 0.3897,
0.3501

89.7023, 0.3057,
0.3265

42.1789, 0.4215,
0.3560

96.5701, 0.3011,
0.3290

36.0693, 0.4581,
0.3610

■ 30.9770, 0.4980,
0.3640

■ 26.8454, 0.5388,
0.3642

■ 23.6116, 0.5761,
0.3606

■ 21.2047, 0.6051,
0.3532

■ 20.3191, 0.6158,
0.3492

Harmonies

Analogous

The Analogous color harmony consists of three colors that are next to each other on the color wheel.



67.1147, 0.3336, 0.3256



67.1147, 0.3400, 0.3377



67.1147, 0.3389, 0.3479

Triad

The Triadic color harmony groups three colors that are evenly spaced from another and form a triangle on the color wheel.



67.1147, 0.3400, 0.3377



67.1147, 0.3036, 0.3442



67.1147, 0.2948, 0.3054

Complementary

The Complementary color scheme is a pair of colors which are on the opposite of each other on the color wheel.



67.1147, 0.3400, 0.3377



73.8285, 0.2893, 0.3201

Split Complementary

Split-complementary colors differ from the complementary color scheme. The scheme consists of three colors, the original color and two neighbors of the complement color.



67.1147, 0.2871, 0.3097



67.1147, 0.3400, 0.3377



67.1147, 0.2922, 0.3320

Square

The Square scheme is like the rectangle color scheme, but the four colors are evenly spaced on the color wheel.



67.1147, 0.3400, 0.3377



67.1147, 0.3177, 0.3521



67.1147, 0.2862, 0.3193



67.1147, 0.3073, 0.3072

Rectangle

The Rectangle color scheme consists of four colors that form a rectangle on the color wheel.



67.1147, 0.3400, 0.3377



67.1147, 0.3341, 0.3522



67.1147, 0.2862, 0.3193



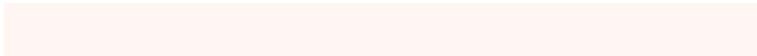
67.1147, 0.2916, 0.3061

Sweetspot

The Sweet Spot groups the original color and five complimentary colors.



67.1177, 0.3400, 0.3377



93.0387, 0.3209, 0.3318



64.7649, 0.3201, 0.2992



19.7112, 0.3221, 0.3322



0.0000, 0.0000, 0.0000



21.4041, 0.3127, 0.3290

Same Dimension

The Same Dimension uses a secret algorithm to generate beautiful new colors.



67.1177, 0.3400, 0.3377



76.6807, 0.3460, 0.3394



76.2841, 0.3371, 0.3564



15.5961, 0.3287, 0.3343



11.3594, 0.6133, 0.3513



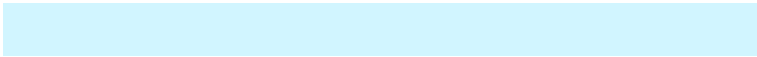
1.0320, 0.5869, 0.3722

Inverse Universe

The Inverse Universe completely reimagines the original color for something new.



73.8285, 0.2893, 0.3201



85.9823, 0.2850, 0.3183



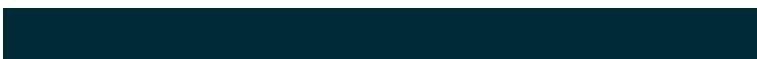
64.5391, 0.2885, 0.3000



16.5218, 0.2981, 0.3236



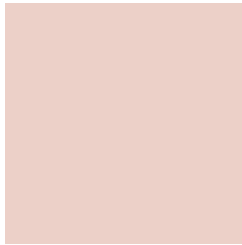
22.3505, 0.2044, 0.2560



1.8945, 0.2076, 0.2672

Previews

White Background



This preview shows how the Yxy color 67.1147, 0.3400, 0.3377 looks on a white background.

Color Contrast Check

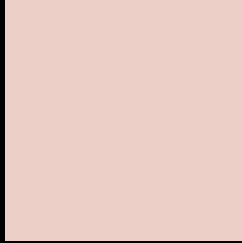
Large Text (above 18pt) WCAG AA × Fail

Any Text WCAG AA × Fail

Large Text (above 18pt) WCAG AAA × Fail

Any Text WCAG AAA × Fail

Black Background



This preview shows how the Yxy color 67.1147, 0.3400, 0.3377 looks on a black background.

Color Contrast Check

Large Text (above 18pt) WCAG AA ✓ Pass

Any Text WCAG AA ✓ Pass

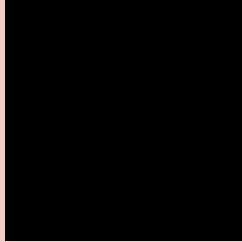
Large Text (above 18pt) WCAG AAA ✓ Pass

Any Text WCAG AAA ✓ Pass

If you want to check with other color combinations, try the [Color Contrast Checker](#).

Yxy 67.1147, 0.3400, 0.3377

Background



This preview shows how black text looks on a background with the Yxy color 67.1147, 0.3400, 0.3377.

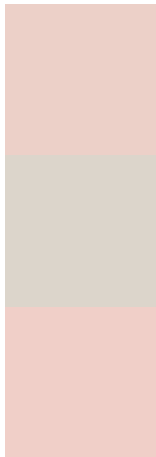


This preview shows how white text looks on a background with the Yxy color 67.1147, 0.3400, 0.3377.

Color Blindness Simulation

Color vision deficiency is a very complex topic, and I could not describe the different causes any better than Wikipedia does, so if you want to learn more, you should check out their [article about color blindness](#).

Dichromacy



Original Color

67.1147, 0.3400, 0.3377

Protanopia

67.1159, 0.3249, 0.3402

Deuteranopia

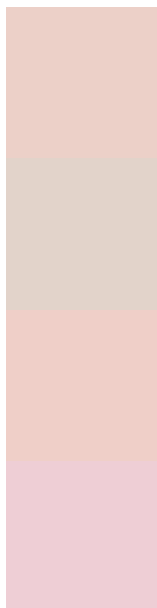
67.3210, 0.3433, 0.3366



Tritanopia

67.2338, 0.3272, 0.3122

Trichromacy



Original Color

67.1147, 0.3400, 0.3377

Protanomaly

67.0216, 0.3304, 0.3390

Deuteranomaly

67.1465, 0.3426, 0.3366

Tritanomaly

67.1239, 0.3322, 0.3216

Monochromacy



Original Color

67.1147, 0.3400, 0.3377

Achromatopsia

67.9542, 0.3127, 0.3290

Achromatomaly

67.4281, 0.3223, 0.3312

CSS Examples

Text

The CSS property to change the color of the text to Yxy 67.1147, 0.3400, 0.3377 is called "color". The color property can be set on classes, ids or directly on the HTML element.

This example shows how text in the color `rgb(236, 208, 200)` looks like.

```
.text, #text, p{  
    color:rgb(236, 208, 200)  
}
```

If you want to add a text shadow in that color use the text-shadow property, you can generate a text shadow directly with our [CSS Text Shadow Generator](#).

Here you see how black text with a 4 pixel rgb(236, 208, 200) colored shadow looks like.

```
.shadow{ text-shadow: 4px 4px 2px rgb(236, 208, 200) }
```

Border

The CSS property to change the border of an element to Yxy 67.1147, 0.3400, 0.3377 is called "border". The border property can be set on classes, ids or directly on the HTML element.

This example shows the color as border, it can be applied via the CSS property "border" or "border-color".

```
.border, #border, table{ border:4px solid rgb(236, 208, 200) }
```

If only the border color should be changed use the property `border-color`.

```
.border{ border-color:rgb(236, 208, 200) }
```

If you want to add a box shadow in that color use:

Here you see how a box with a 4 pixel `rgb(236, 208, 200)` colored shadow looks like.

```
.boxshadow{ -moz-box-shadow:4px 4px 4px 4px rgb(236, 208, 200); -webkit-box-shadow:4px 4px 4px 4px rgb(236, 208, 200); box-shadow:4px 4px 4px 4px rgb(236, 208, 200) }
```


Background

The CSS property to change the background color of an element to Yxy 67.1147, 0.3400, 0.3377 is called "background". The background property can be set on classes, ids or directly on the HTML element.

```
.background, #background, body{  
background: rgb(236, 208, 200) }
```

If only the background color should be changed can be used:

```
.background{ background-color: rgb(236,  
208, 200) }
```

This example shows the color as background, it is applied via the CSS property "background".

To optimize and compress your CSS code, you can use our [online CSS compressor and optimizer](#) based on csstidy. If you want to create a linear or radial gradient as background or border, check our [CSS Gradient Generator](#).

Hey! You found this booklet interesting? Support Converting Colors with the new Membership Option!

The pro membership hides all ads, plus gives you double the colors in the color bucket, and more awesome pro features!

[Learn more, Memberships starting at \\$2.50/m!](#)

**Follow me
on Twitter!**

@ConvertingColor