

Converting Colors

Yxy(67.0481, 0.3383, 0.3400)

Have a look what the booklet for
Yxy(67.0481, 0.3383, 0.3400)
contains.

Yxy(67.0481, 0.3383, 0.3400)	3
<i>Conversions</i>	4
<i>Details</i>	6
<i>Harmonies</i>	12
<i>Previews</i>	24
<i>Color Blindness Simulation</i>	27
<i>CSS Examples</i>	30

Color

Yxy(67.0481, 0.3383, 0.3400)

Conversions

Conversions Part 1

Format	Color
Hex	E9D1C7
RGB	233, 209, 199
RGB Percent	91%, 82%, 78%
CMY	0.0862, 0.1804, 0.2197
CMYK	0.00, 0.10, 0.15, 0.09
HSL	18°, 44%, 85%
HSV	18°, 15%, 91%
XYZ	66.7129, 67.0481, 63.4393
YIQ	215.0360, 17.5140, 1.9780

Conversions

Conversions Part 2

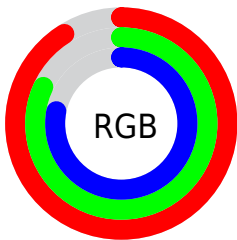
Format	Color
R _Y B	233, 213, 199
Decimal	15323591
CIE Lab	85.53, 6.73, 8.01
CIE LCh	86, 10.458, 49.945
Yxy	67.0481, 0.3383, 0.3400
Android (android.graphics.Color)	4293513671 (0xFFE9D1C7)
YUV	215.0360, -7.9057, 15.7544
Hunter-Lab	81.8829, 2.1351, 11.3827

Details

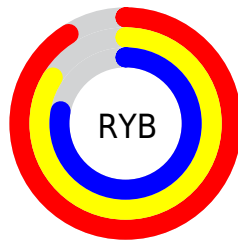
The Yxy color **67.0481, 0.3383, 0.3400** is a light color, and the websafe version is hex **CCCCCC**. A complement of this color would be **70.7837, 0.2901, 0.3177**, and the grayscale version is **68.0276, 0.3127, 0.3290**.

A 20% lighter version of the original color is **100.0000, 0.3127, 0.3290**, and **34.8341, 0.3446, 0.3433** is the 20% darker color. If you saturate the color by 10%, you get **58.3986, 0.3599, 0.3481**, and if you desaturate by 10%, it is **76.7009, 0.3201, 0.3324**.

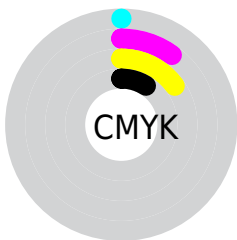
Distribution



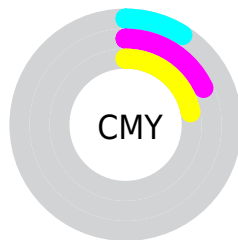
- Red (91%)
- Green (82%)
- Blue (78%)



- Red (91%)
- Yellow (84%)
- Blue (78%)



- Cyan (0%)
- Magenta (10%)
- Yellow (15%)
- Black (9%)





- Cyan (9%)
- Magenta (18%)
- Yellow (22%)

Brightness & Saturation Gradients


These gradients show how the Yxy color 67.0481, 0.3383, 0.3400 changes by changing the brightness by 10 percent. The first figure shows a shift by +10% for each color and the second figure -10%.

Similar to the brightness gradients but the following saturation gradients show a change of the Yxy color 67.0481, 0.3383, 0.3400 by changing the saturation by 10% instead.


 67.0481, 0.3383,
0.3400

 67.0481, 0.3383,
0.3400


450.1160, 0.3262,
0.3350

 49.1237, 0.3411,
0.3411


114.9893, 0.3341,
0.3383

 34.7176, 0.3446,
0.3425


145.7750, 0.3324,
0.3376

 23.4454, 0.3492,
0.3443


181.6165, 0.3310,
0.3370

 14.9228, 0.3552,
0.3466

222.8983, 0.3298,
0.3365

 8.7652, 0.3635,
0.3497

270.0047, 0.3287,
0.3360

 4.5883, 0.3759,
0.3540

323.3202, 0.3278,

 2.0078, 0.3961,

0.3356

0.3605

383.2292, 0.3270,
0.3353

0.6120, 0.5093,
0.4178

0.0000, 0.0000,
0.0000

67.0481, 0.3383,
0.3400

67.0481, 0.3383,
0.3400

58.3986, 0.3599,
0.3481

76.7009, 0.3201,
0.3324

50.7108, 0.3854,
0.3563

87.3792, 0.3048,
0.3252

43.9534, 0.4151,
0.3642

96.0653, 0.2993,
0.3290

38.0898, 0.4487,
0.3711

■ 33.0809, 0.4854,
0.3759

■ 28.8845, 0.5229,
0.3774

■ 25.4543, 0.5581,
0.3746

■ 22.7386, 0.5871,
0.3671

■ 21.5439, 0.5999,
0.3619

Harmonies

Analogous

The Analogous color harmony consists of three colors that are next to each other on the color wheel.



67.0481, 0.3342, 0.3290



67.0481, 0.3383, 0.3400



67.0481, 0.3353, 0.3484

Triad

The Triadic color harmony groups three colors that are evenly spaced from another and form a triangle on the color wheel.



67.0481, 0.3383, 0.3400



67.0481, 0.3010, 0.3401



67.0481, 0.2990, 0.3071

Complementary

The Complementary color scheme is a pair of colors which are on the opposite of each other on the color wheel.



67.0481, 0.3383, 0.3400



70.7837, 0.2901, 0.3177

Split Complementary

Split-complementary colors differ from the complementary color scheme. The scheme consists of three colors, the original color and two neighbors of the complement color.



67.0481, 0.2905, 0.3095



67.0481, 0.3383, 0.3400



67.0481, 0.2916, 0.3284

Square

The Square scheme is like the rectangle color scheme, but the four colors are evenly spaced on the color wheel.



67.0481, 0.3383, 0.3400



67.0481, 0.3136, 0.3488



67.0481, 0.2878, 0.3172



67.0481, 0.3114, 0.3103

Rectangle

The Rectangle color scheme consists of four colors that form a rectangle on the color wheel.



67.0481, 0.3383, 0.3400



67.0481, 0.3298, 0.3513



67.0481, 0.2878, 0.3172



67.0481, 0.2956, 0.3072

Sweetspot

The Sweet Spot groups the original color and five complimentary colors.



67.0511, 0.3383, 0.3400



94.8566, 0.3191, 0.3319



63.5060, 0.3214, 0.3029



20.1011, 0.3204, 0.3325



0.0000, 0.0000, 0.0000



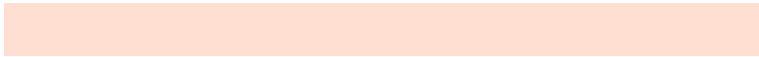
21.4041, 0.3127, 0.3290

Same Dimension

The Same Dimension uses a secret algorithm to generate beautiful new colors.



67.0511, 0.3383, 0.3400



78.4471, 0.3454, 0.3428



75.6417, 0.3357, 0.3576



15.7777, 0.3285, 0.3360



12.4103, 0.5972, 0.3640



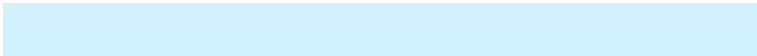
1.1362, 0.5700, 0.3856

Inverse Universe

The Inverse Universe completely reimagines the original color for something new.



70.7837, 0.2901, 0.3177



83.9781, 0.2848, 0.3148



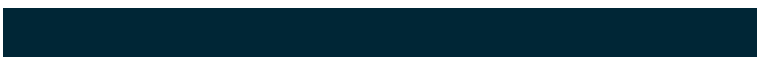
62.3311, 0.2895, 0.2987



16.3283, 0.2981, 0.3219



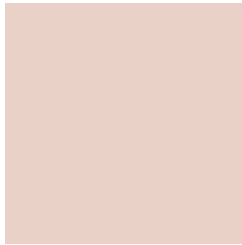
18.6920, 0.1973, 0.2301



1.6333, 0.2015, 0.2455

Previews

White Background



This preview shows how the Yxy color 67.0481, 0.3383, 0.3400 looks on a white background.

Color Contrast Check

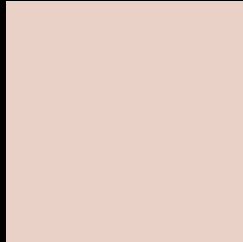
Large Text (above 18pt) WCAG AA × Fail

Any Text WCAG AA × Fail

Large Text (above 18pt) WCAG AAA × Fail

Any Text WCAG AAA × Fail

Black Background



This preview shows how the Yxy color 67.0481, 0.3383, 0.3400 looks on a black background.

Color Contrast Check

Large Text (above 18pt) WCAG AA ✓ Pass

Any Text WCAG AA ✓ Pass

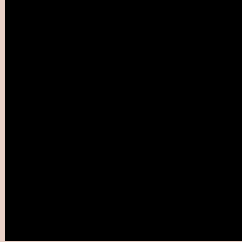
Large Text (above 18pt) WCAG AAA ✓ Pass

Any Text WCAG AAA ✓ Pass

If you want to check with other color combinations, try the [Color Contrast Checker](#).

Yxy 67.0481, 0.3383, 0.3400

Background



This preview shows how black text looks on a background with the Yxy color 67.0481, 0.3383, 0.3400.

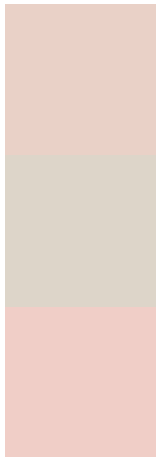


This preview shows how white text looks on a background with the Yxy color 67.0481, 0.3383, 0.3400.

Color Blindness Simulation

Color vision deficiency is a very complex topic, and I could not describe the different causes any better than Wikipedia does, so if you want to learn more, you should check out their [article about color blindness](#).

Dichromacy



Original Color

67.0481, 0.3383, 0.3400

Protanopia

67.1777, 0.3270, 0.3424

Deuteranopia

66.7914, 0.3443, 0.3366



Tritanopia

67.2494, 0.3241, 0.3121

Trichromacy



Original Color

67.0481, 0.3383, 0.3400

Protanomaly

67.2646, 0.3309, 0.3423

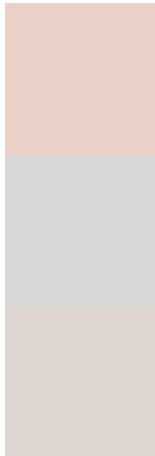
Deuteranomaly

66.7537, 0.3417, 0.3377

Tritanomaly

67.1429, 0.3291, 0.3215

Monochromacy



Original Color

67.0481, 0.3383, 0.3400

Achromatopsia

67.9542, 0.3127, 0.3290

Achromatomaly

67.7215, 0.3222, 0.3335

CSS Examples

Text

The CSS property to change the color of the text to Yxy 67.0481, 0.3383, 0.3400 is called "color". The color property can be set on classes, ids or directly on the HTML element.

This example shows how text in the color `rgb(233, 209, 199)` looks like.

```
.text, #text, p{  
    color:rgb(233, 209, 199)  
}
```

If you want to add a text shadow in that color use the text-shadow property, you can generate a text shadow directly with our [CSS Text Shadow Generator](#).

Here you see how black text with a 4 pixel rgb(233, 209, 199) colored shadow looks like.

```
.shadow{ text-shadow: 4px 4px 2px rgb(233, 209, 199) }
```

Border

The CSS property to change the border of an element to Yxy 67.0481, 0.3383, 0.3400 is called "border". The border property can be set on classes, ids or directly on the HTML element.

This example shows the color as border, it can be applied via the CSS property "border" or "border-color".

```
.border, #border, table{ border:4px solid rgb(233, 209, 199) }
```

If only the border color should be changed use the property `border-color`.

```
.border{ border-color:rgb(233, 209, 199) }
```

If you want to add a box shadow in that color use:

Here you see how a box with a 4 pixel `rgb(233, 209, 199)` colored shadow looks like.

```
.boxshadow{ -moz-box-shadow:4px 4px 4px 4px rgb(233, 209, 199); -webkit-box-shadow:4px 4px 4px 4px rgb(233, 209, 199); box-shadow:4px 4px 4px 4px rgb(233, 209, 199) }
```


Background

The CSS property to change the background color of an element to Yxy 67.0481, 0.3383, 0.3400 is called "background". The background property can be set on classes, ids or directly on the HTML element.

```
.background, #background, body{  
background: rgb(233, 209, 199) }
```

If only the background color should be changed can be used:

```
.background{ background-color: rgb(233,  
209, 199) }
```

This example shows the color as background, it is applied via the CSS property "background".

To optimize and compress your CSS code, you can use our [online CSS compressor and optimizer](#) based on csstidy. If you want to create a linear or radial gradient as background or border, check our [CSS Gradient Generator](#).

Hey! You found this booklet interesting? Support Converting Colors with the new Membership Option!

The pro membership hides all ads, plus gives you double the colors in the color bucket, and more awesome pro features!

[Learn more, Memberships starting at \\$2.50/m!](#)

**Follow me
on Twitter!**

@ConvertingColor