

Converting Colors

$Yxy(67.1036, 0.3358, 0.3417)$

Have a look what the booklet for
Yxy(67.1036, 0.3358, 0.3417)
contains.

Yxy(67.0397, 0.3358, 0.3411)	3
Conversions	4
Details	6
Harmonies	12
Previews	24
Color Blindness Simulation	27
CSS Examples	30

Color

Yxy(67.0397, 0.3358, 0.3411)

Conversions

Conversions Part 1

Format	Color
Hex	E6D2C7
RGB	230, 210, 199
RGB Percent	90%, 82%, 78%
CMY	0.0979, 0.1765, 0.2196
CMYK	0.00, 0.09, 0.13, 0.10
HSL	21°, 38%, 84%
HSV	21°, 13%, 90%
XYZ	65.9980, 67.0397, 63.5020
YIQ	214.7260, 15.4510, 0.8190

Conversions

Conversions Part 2

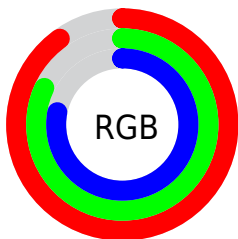
Format	Color
R _{YB}	230, 216, 199
Decimal	15127239
CIE Lab	85.52, 5.16, 7.94
CIE LCh	86, 9.470, 57.012
Yxy	67.0397, 0.3358, 0.3411
Android (android.graphics.Color)	4293317319 (0xFFE6D2C7)
YUV	214.7260, -7.7529, 13.3953
Hunter-Lab	81.8778, 0.5948, 11.3309

Details

The Yxy color **67.0397, 0.3358, 0.3411** is a light color, and the websafe version is hex **CCCCCC**. A complement of this color would be **68.5522, 0.2918, 0.3166**, and the grayscale version is **67.8105, 0.3127, 0.3290**.

A 20% lighter version of the original color is **100.0000, 0.3127, 0.3290**, and **34.8199, 0.3412, 0.3449** is the 20% darker color. If you saturate the color by 10%, you get **59.0524, 0.3565, 0.3507**, and if you desaturate by 10%, it is **75.8761, 0.3182, 0.3320**.

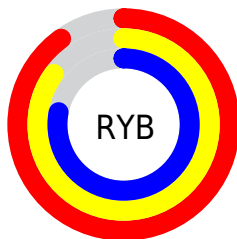
Distribution



Red (90%)

Green (82%)

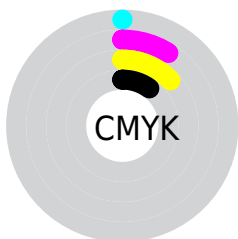
Blue (78%)



Red (90%)

Yellow (85%)

Blue (78%)

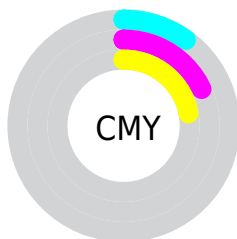


Cyan (0%)

Magenta (9%)

Yellow (13%)

Black (10%)



Cyan (10%)

Magenta (18%)

Yellow (22%)

Brightness & Saturation Gradients

These gradients show how the Yxy color 67.0397, 0.3358, 0.3411 changes by changing the brightness by 10 percent. The first figure shows a shift by +10% for each color and the second figure -10%.

Similar to the brightness gradients but the following saturation gradients show a change of the Yxy color 67.0397, 0.3358, 0.3411 by changing the saturation by 10% instead.

67.0397, 0.3358,
0.3411

67.0397, 0.3358,
0.3411

450.0861, 0.3249,
0.3355

49.1169, 0.3383,
0.3424

114.9773, 0.3320,
0.3392

34.7122, 0.3415,
0.3439

145.7609, 0.3305,
0.3384

23.4413, 0.3456,
0.3459

181.6002, 0.3292,
0.3378

14.9197, 0.3510,
0.3485

222.8796, 0.3281,
0.3372

8.7630, 0.3585,
0.3521

269.9834, 0.3272,
0.3367

4.5869, 0.3696,
0.3571

323.2962, 0.3263,

2.0070, 0.3878,

0.3363

0.3649

383.2023, 0.3256,
0.3359

0.6115, 0.4948,
0.4279

0.0000, 0.0000,
0.0000

67.0397, 0.3358,
0.3411

67.0397, 0.3358,
0.3411

59.0524, 0.3565,
0.3507

75.8761, 0.3182,
0.3320

51.8796, 0.3806,
0.3605

85.5771, 0.3033,
0.3236

45.4972, 0.4083,
0.3700

95.3017, 0.2976,
0.3285

39.8765, 0.4395,
0.3786

95.5689, 0.2976,
0.3290

■ 34.9871, 0.4733,
0.3850

■ 30.7960, 0.5080,
0.3882

■ 27.2674, 0.5411,
0.3868

■ 24.3612, 0.5694,
0.3802

■ 22.7748, 0.5847,
0.3739

Harmonies

Analogous

The Analogous color harmony consists of three colors that are next to each other on the color wheel.



67.0397, 0.3336, 0.3315



67.0397, 0.3358, 0.3411



67.0397, 0.3317, 0.3478

Triad

The Triadic color harmony groups three colors that are evenly spaced from another and form a triangle on the color wheel.



67.0397, 0.3358, 0.3411



67.0397, 0.2997, 0.3367



67.0397, 0.3028, 0.3093

Complementary

The Complementary color scheme is a pair of colors which are on the opposite of each other on the color wheel.



67.0397, 0.3358, 0.3411



68.5522, 0.2918, 0.3166

Split Complementary

Split-complementary colors differ from the complementary color scheme. The scheme consists of three colors, the original color and two neighbors of the complement color.



67.0397, 0.2940, 0.3103



67.0397, 0.3358, 0.3411



67.0397, 0.2923, 0.3260

Square

The Square scheme is like the rectangle color scheme, but the four colors are evenly spaced on the color wheel.



67.0397, 0.3358, 0.3411



67.0397, 0.3108, 0.3454



67.0397, 0.2902, 0.3163



67.0397, 0.3144, 0.3134

Rectangle

The Rectangle color scheme consists of four colors that form a rectangle on the color wheel.



67.0397, 0.3358, 0.3411



67.0397, 0.3259, 0.3495



67.0397, 0.2902, 0.3163



67.0397, 0.2994, 0.3091

Sweetspot

The Sweet Spot groups the original color and five complimentary colors.



67.0427, 0.3358, 0.3411



95.2274, 0.3191, 0.3325



62.8062, 0.3222, 0.3072



20.1947, 0.3203, 0.3332



0.0000, 0.0000, 0.0000



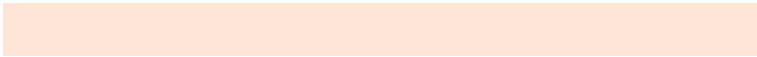
21.4041, 0.3127, 0.3290

Same Dimension

The Same Dimension uses a secret algorithm to generate beautiful new colors.



67.0427, 0.3358, 0.3411



81.9643, 0.3409, 0.3436



75.0107, 0.3335, 0.3575



15.1983, 0.3284, 0.3374



13.0982, 0.5819, 0.3762



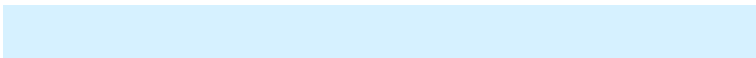
1.1380, 0.5539, 0.3984

Inverse Universe

The Inverse Universe completely reimagines the original color for something new.



68.5522, 0.2918, 0.3166



84.1973, 0.2878, 0.3140



60.8870, 0.2913, 0.2988



15.4330, 0.2981, 0.3205



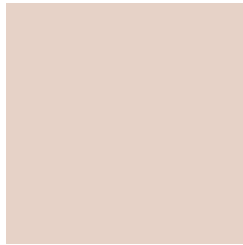
15.5712, 0.1914, 0.2091



1.3240, 0.1968, 0.2286

Previews

White Background



This preview shows how the Yxy color 67.0397, 0.3358, 0.3411 looks on a white background.

Color Contrast Check

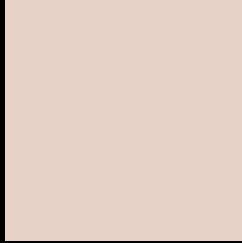
Large Text (above 18pt) WCAG AA × Fail

Any Text WCAG AA × Fail

Large Text (above 18pt) WCAG AAA × Fail

Any Text WCAG AAA × Fail

Black Background



This preview shows how the Yxy color 67.0397, 0.3358, 0.3411 looks on a black background.

Color Contrast Check

Large Text (above 18pt) WCAG AA ✓ Pass

Any Text WCAG AA ✓ Pass

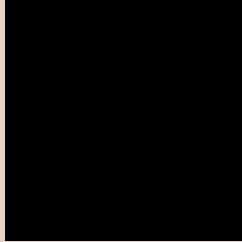
Large Text (above 18pt) WCAG AAA ✓ Pass

Any Text WCAG AAA ✓ Pass

If you want to check with other color combinations, try the [Color Contrast Checker](#).

Yxy 67.0397, 0.3358, 0.3411

Background



This preview shows how black text looks on a background with the Yxy color 67.0397, 0.3358, 0.3411.

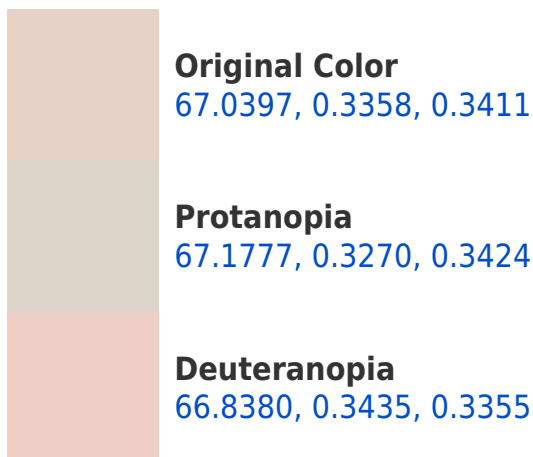


This preview shows how white text looks on a background with the Yxy color 67.0397, 0.3358, 0.3411.

Color Blindness Simulation

Color vision deficiency is a very complex topic, and I could not describe the different causes any better than Wikipedia does, so if you want to learn more, you should check out their [article about color blindness](#).

Dichromacy





Tritanopia

66.7940, 0.3211, 0.3109

Trichromacy



Original Color

67.0397, 0.3358, 0.3411

Protanomaly

67.1044, 0.3302, 0.3424

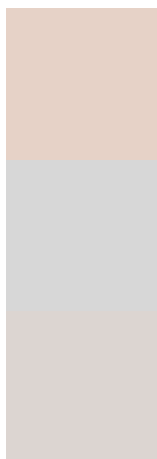
Deuteranomaly

66.6286, 0.3402, 0.3367

Tritanomaly

66.6365, 0.3268, 0.3215

Monochromacy



Original Color

67.0397, 0.3358, 0.3411

Achromatopsia

67.9542, 0.3127, 0.3290

Achromatomaly

67.4076, 0.3207, 0.3335

CSS Examples

Text

The CSS property to change the color of the text to Yxy 67.0397, 0.3358, 0.3411 is called "color". The color property can be set on classes, ids or directly on the HTML element.

This example shows how text in the color `rgb(230, 210, 199)` looks like.

```
.text, #text, p{  
    color:rgb(230, 210, 199)  
}
```

If you want to add a text shadow in that color use the text-shadow property, you can generate a text shadow directly with our [CSS Text Shadow Generator](#).

Here you see how black text with a 4 pixel rgb(230, 210, 199) colored shadow looks like.

```
.shadow{ text-shadow: 4px 4px 2px rgb(230, 210, 199) }
```

Border

The CSS property to change the border of an element to Yxy 67.0397, 0.3358, 0.3411 is called "border". The border property can be set on classes, ids or directly on the HTML element.

This example shows the color as border, it can be applied via the CSS property "border" or "border-color".

```
.border, #border, table{ border:4px solid rgb(230, 210, 199) }
```

If only the border color should be changed use the property `border-color`.

```
.border{ border-color:rgb(230, 210, 199) }
```

If you want to add a box shadow in that color use:

Here you see how a box with a 4 pixel `rgb(230, 210, 199)` colored shadow looks like.

```
.boxshadow{ -moz-box-shadow:4px 4px 4px  
4px rgb(230, 210, 199); -webkit-box-  
shadow:4px 4px 4px 4px rgb(230, 210, 199);  
box-shadow:4px 4px 4px 4px rgb(230, 210,  
199) }
```


Background

The CSS property to change the background color of an element to Yxy 67.0397, 0.3358, 0.3411 is called "background". The background property can be set on classes, ids or directly on the HTML element.

```
.background, #background, body{  
background: rgb(230, 210, 199) }
```

If only the background color should be changed can be used:

```
.background{ background-color: rgb(230,  
210, 199) }
```

This example shows the color as background, it is applied via the CSS property "background".

To optimize and compress your CSS code, you can use our [online CSS compressor and optimizer](#) based on csstidy. If you want to create a linear or radial gradient as background or border, check our [CSS Gradient Generator](#).

Hey! You found this booklet interesting? Support Converting Colors with the new Membership Option!

The pro membership hides all ads, plus gives you double the colors in the color bucket, and more awesome pro features!

[Learn more, Memberships starting at \\$2.50/m!](#)

**Follow me
on Twitter!**

@ConvertingColor