

Converting Colors

$Yxy(67.1715, 0.3361, 0.3388)$

Have a look what the booklet for
Yxy(67.1715, 0.3361, 0.3388)
contains.

Yxy(67.4660, 0.3359, 0.3389)	3
Conversions	4
Details	6
Harmonies	12
Previews	24
Color Blindness Simulation	27
CSS Examples	30

Color

Yxy(67.4660, 0.3359, 0.3389)

Conversions

Conversions Part 1

Format	Color
Hex	E8D2C9
RGB	232, 210, 201
RGB Percent	91%, 82%, 79%
CMY	0.0901, 0.1765, 0.2119
CMYK	0.00, 0.09, 0.13, 0.09
HSL	17°, 40%, 85%
HSV	17°, 13%, 91%
XYZ	66.8688, 67.4660, 64.7387
YIQ	215.5520, 16.0010, 1.8650

Conversions

Conversions Part 2

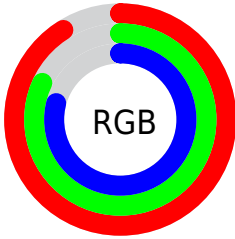
Format	Color
R _Y B	232, 214, 201
Decimal	15258313
CIE Lab	85.74, 6.17, 7.24
CIE LCh	86, 9.508, 49.549
Yxy	67.4660, 0.3359, 0.3389
Android (android.graphics.Color)	4293448393 (0xFFE8D2C9)
YUV	215.5520, -7.1741, 14.4249
Hunter-Lab	82.1377, 1.5770, 10.7656

Details

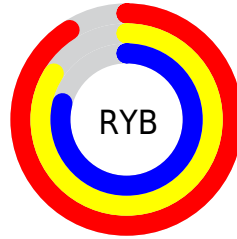
The Yxy color **67.4660, 0.3359, 0.3389** is a light color, and the websafe version is hex **CCCCCC**. A complement of this color would be **71.0085, 0.2920, 0.3189**, and the grayscale version is **68.3921, 0.3127, 0.3290**.

A 20% lighter version of the original color is **100.0000, 0.3127, 0.3290**, and **35.1136, 0.3414, 0.3419** is the 20% darker color. If you saturate the color by 10%, you get **58.7476, 0.3571, 0.3468**, and if you desaturate by 10%, it is **77.1905, 0.3181, 0.3314**.

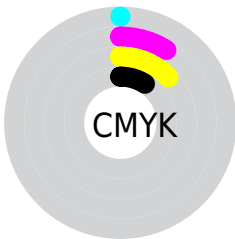
Distribution



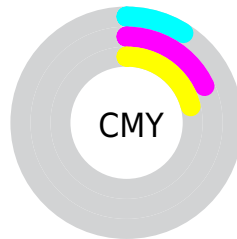
- Red (91%)
- Green (82%)
- Blue (79%)



- Red (91%)
- Yellow (84%)
- Blue (79%)



- Cyan (0%)
- Magenta (9%)
- Yellow (13%)
- Black (9%)





- Cyan (9%)
- Magenta (18%)
- Yellow (21%)

Brightness & Saturation Gradients


These gradients show how the Yxy color 67.4660, 0.3359, 0.3389 changes by changing the brightness by 10 percent. The first figure shows a shift by +10% for each color and the second figure -10%.

Similar to the brightness gradients but the following saturation gradients show a change of the Yxy color 67.4660, 0.3359, 0.3389 by changing the saturation by 10% instead.

 67.4660, 0.3359,
0.3389

 67.4660, 0.3359,
0.3389


451.6017, 0.3250,
0.3344

 49.4634, 0.3385,
0.3399

115.5879, 0.3321,
0.3373

 34.9872, 0.3416,
0.3412


146.4760, 0.3306,
0.3367

 23.6530, 0.3457,
0.3428


182.4281, 0.3293,
0.3362

 15.0765, 0.3511,
0.3449

223.8285, 0.3282,
0.3357

 8.8731, 0.3586,
0.3477

271.0617, 0.3273,
0.3353

 4.6585, 0.3698,
0.3516

324.5120, 0.3264,

 2.0483, 0.3880,

0.3350

0.3576

384.5639, 0.3256,
0.3346

0.6353, 0.4788,
0.4032

0.0000, 0.0000,
0.0000

67.4660, 0.3359,
0.3389

67.4660, 0.3359,
0.3389

58.7476, 0.3571,
0.3468

77.1905, 0.3181,
0.3314

50.9938, 0.3822,
0.3549

87.9432, 0.3031,
0.3245

44.1734, 0.4114,
0.3628

95.8984, 0.2988,
0.3290

38.2500, 0.4447,
0.3698

■ 33.1848, 0.4812,
0.3748

■ 28.9358, 0.5190,
0.3767

■ 25.4571, 0.5548,
0.3745

■ 22.6975, 0.5849,
0.3675

■ 21.2315, 0.6008,
0.3612

Harmonies

Analogous

The Analogous color harmony consists of three colors that are next to each other on the color wheel.



67.4660, 0.3322, 0.3289



67.4660, 0.3359, 0.3389



67.4660, 0.3333, 0.3466

Triad

The Triadic color harmony groups three colors that are evenly spaced from another and form a triangle on the color wheel.



67.4660, 0.3359, 0.3389



67.4660, 0.3022, 0.3392



67.4660, 0.3002, 0.3091

Complementary

The Complementary color scheme is a pair of colors which are on the opposite of each other on the color wheel.



67.4660, 0.3359, 0.3389



71.0085, 0.2920, 0.3189

Split Complementary

Split-complementary colors differ from the complementary color scheme. The scheme consists of three colors, the original color and two neighbors of the complement color.



67.4660, 0.2925, 0.3114



67.4660, 0.3359, 0.3389



67.4660, 0.2936, 0.3287

Square

The Square scheme is like the rectangle color scheme, but the four colors are evenly spaced on the color wheel.



67.4660, 0.3359, 0.3389



67.4660, 0.3137, 0.3470



67.4660, 0.2901, 0.3185



67.4660, 0.3114, 0.3119

Rectangle

The Rectangle color scheme consists of four colors that form a rectangle on the color wheel.



67.4660, 0.3359, 0.3389



67.4660, 0.3283, 0.3492



67.4660, 0.2901, 0.3185



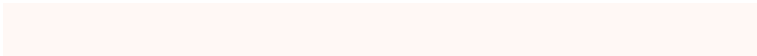
67.4660, 0.2971, 0.3092

Sweetspot

The Sweet Spot groups the original color and five complimentary colors.



67.4690, 0.3359, 0.3389



94.8321, 0.3191, 0.3319



64.2588, 0.3206, 0.3051



20.0949, 0.3204, 0.3324



0.0000, 0.0000, 0.0000



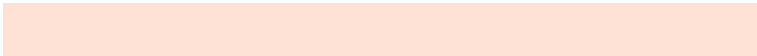
21.4041, 0.3127, 0.3290

Same Dimension

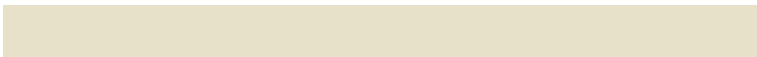
The Same Dimension uses a secret algorithm to generate beautiful new colors.



67.4690, 0.3359, 0.3389



80.5553, 0.3413, 0.3410



75.3814, 0.3337, 0.3551



15.0476, 0.3285, 0.3359



11.9735, 0.5979, 0.3634



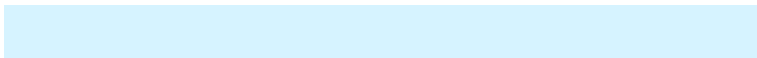
1.0408, 0.5692, 0.3863

Inverse Universe

The Inverse Universe completely reimagines the original color for something new.



71.0085, 0.2920, 0.3189



85.7261, 0.2879, 0.3167



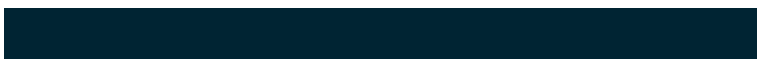
63.2060, 0.2916, 0.3015



15.5909, 0.2981, 0.3220



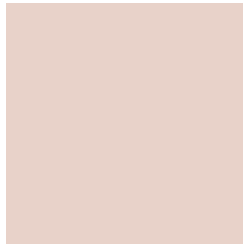
18.3037, 0.1977, 0.2316



1.5107, 0.2021, 0.2476

Previews

White Background



This preview shows how the Yxy color 67.4660, 0.3359, 0.3389 looks on a white background.

Color Contrast Check

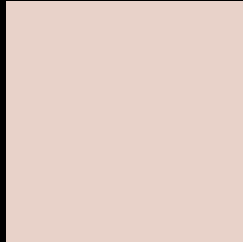
Large Text (above 18pt) WCAG AA × Fail

Any Text WCAG AA × Fail

Large Text (above 18pt) WCAG AAA × Fail

Any Text WCAG AAA × Fail

Black Background



This preview shows how the Yxy color 67.4660, 0.3359, 0.3389 looks on a black background.

Color Contrast Check

Large Text (above 18pt) WCAG AA ✓ Pass

Any Text WCAG AA ✓ Pass

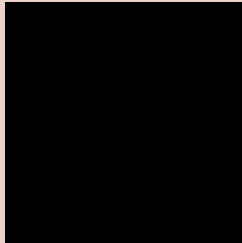
Large Text (above 18pt) WCAG AAA ✓ Pass

Any Text WCAG AAA ✓ Pass

If you want to check with other color combinations, try the [Color Contrast Checker](#).

Yxy 67.4660, 0.3359, 0.3389

Background



This preview shows how black text looks on a background with the Yxy color 67.4660, 0.3359, 0.3389.

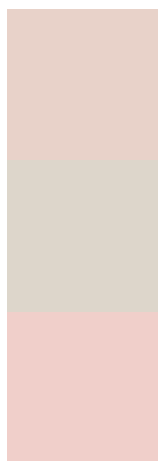


This preview shows how white text looks on a background with the Yxy color 67.4660, 0.3359, 0.3389.

Color Blindness Simulation

Color vision deficiency is a very complex topic, and I could not describe the different causes any better than Wikipedia does, so if you want to learn more, you should check out their [article about color blindness](#).

Dichromacy



Original Color

67.4660, 0.3359, 0.3389

Protanopia

67.7771, 0.3255, 0.3413

Deuteranopia

67.4152, 0.3418, 0.3344



Tritanopia

67.6155, 0.3226, 0.3120

Trichromacy



Original Color

67.4660, 0.3359, 0.3389

Protanomaly

67.8603, 0.3294, 0.3412

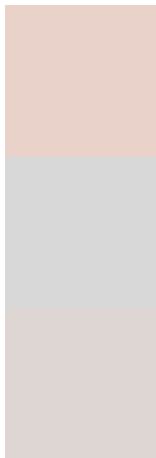
Deuteranomaly

67.3805, 0.3393, 0.3355

Tritanomaly

67.5105, 0.3275, 0.3215

Monochromacy



Original Color

67.4660, 0.3359, 0.3389

Achromatopsia

68.6685, 0.3127, 0.3290

Achromatomaly

68.3259, 0.3207, 0.3323

CSS Examples

Text

The CSS property to change the color of the text to Yxy 67.4660, 0.3359, 0.3389 is called "color". The color property can be set on classes, ids or directly on the HTML element.

This example shows how text in the color `rgb(232, 210, 201)` looks like.

```
.text, #text, p{  
    color:rgb(232, 210, 201)  
}
```

If you want to add a text shadow in that color use the text-shadow property, you can generate a text shadow directly with our [CSS Text Shadow Generator](#).

Here you see how black text with a 4 pixel rgb(232, 210, 201) colored shadow looks like.

```
.shadow{ text-shadow: 4px 4px 2px rgb(232, 210, 201) }
```

Border

The CSS property to change the border of an element to Yxy 67.4660, 0.3359, 0.3389 is called "border". The border property can be set on classes, ids or directly on the HTML element.

This example shows the color as border, it can be applied via the CSS property "border" or "border-color".

```
.border, #border, table{ border:4px solid rgb(232, 210, 201) }
```

If only the border color should be changed use the property border-color.

```
.border{ border-color:rgb(232, 210, 201) }
```

If you want to add a box shadow in that color use:

Here you see how a box with a 4 pixel rgb(232, 210, 201) colored shadow looks like.

```
.boxshadow{ -moz-box-shadow:4px 4px 4px  
4px rgb(232, 210, 201); -webkit-box-  
shadow:4px 4px 4px 4px rgb(232, 210, 201);  
box-shadow:4px 4px 4px 4px rgb(232, 210,  
201) }
```


Background

The CSS property to change the background color of an element to Yxy 67.4660, 0.3359, 0.3389 is called "background". The background property can be set on classes, ids or directly on the HTML element.

```
.background, #background, body{  
background: rgb(232, 210, 201) }
```

If only the background color should be changed can be used:

```
.background{ background-color: rgb(232,  
210, 201) }
```

This example shows the color as background, it is applied via the CSS property "background".

To optimize and compress your CSS code, you can use our [online CSS compressor and optimizer](#) based on csstidy. If you want to create a linear or radial gradient as background or border, check our [CSS Gradient Generator](#).

Hey! You found this booklet interesting? Support Converting Colors with the new Membership Option!

The pro membership hides all ads, plus gives you double the colors in the color bucket, and more awesome pro features!

[Learn more, Memberships starting at \\$2.50/m!](#)

**Follow me
on Twitter!**

@ConvertingColor