

Converting Colors

$Yxy(67.2269, 0.3234, 0.3278)$

Have a look what the booklet for
Yxy(67.2269, 0.3234, 0.3278)
contains.

Yxy(67.5107, 0.3232, 0.3279)	3
Conversions	4
Details	6
Harmonies	12
Previews	24
Color Blindness Simulation	27
CSS Examples	30

Color

Yxy(67.5107, 0.3232, 0.3279)

Conversions

Conversions Part 1

Format	Color
Hex	E2D3D4
RGB	226, 211, 212
RGB Percent	89%, 83%, 83%
CMY	0.1138, 0.1725, 0.1685
CMYK	0.00, 0.07, 0.06, 0.11
HSL	356°, 21%, 86%
HSV	356°, 7%, 89%
XYZ	66.5430, 67.5107, 71.8343
YIQ	215.5990, 8.6190, 3.4910

Conversions

Conversions Part 2

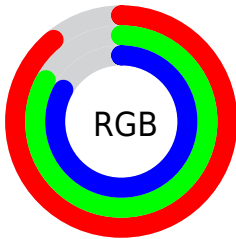
Format	Color
R _Y B	226, 211, 212
Decimal	14865364
CIE Lab	85.76, 5.35, 1.34
CIE LCh	86, 5.514, 14.080
Yxy	67.5107, 0.3232, 0.3279
Android (android.graphics.Color)	4293055444 (0xFFE2D3D4)
YUV	215.5990, -1.7743, 9.1217
Hunter-Lab	82.1649, 0.7735, 5.6799

Details

The Yxy color $67.5107, 0.3232, 0.3279$ is a light color, and the websafe version is hex `CCCCCC`. A complement of this color would be $73.6712, 0.3031, 0.3301$, and the grayscale version is $68.3925, 0.3127, 0.3290$.

A 20% lighter version of the original color is $100.0000, 0.3127, 0.3290$, and $35.2062, 0.3265, 0.3290$ is the 20% darker color. If you saturate the color by 10%, you get $56.0687, 0.3422, 0.3261$, and if you desaturate by 10%, it is $80.6755, 0.3079, 0.3295$.

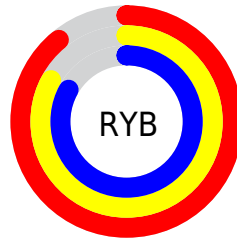
Distribution



Red (89%)

Green (83%)

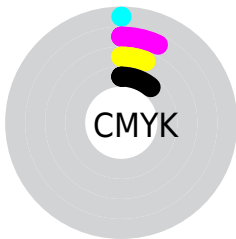
Blue (83%)



Red (89%)

Yellow (83%)

Blue (83%)

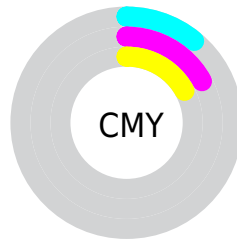


Cyan (0%)

Magenta (7%)

Yellow (6%)

Black (11%)



Cyan (11%)


Magenta (17%)


Yellow (17%)

Brightness & Saturation Gradients


These gradients show how the Yxy color 67.5107, 0.3232, 0.3279 changes by changing the brightness by 10 percent. The first figure shows a shift by +10% for each color and the second figure -10%.

Similar to the brightness gradients but the following saturation gradients show a change of the Yxy color 67.5107, 0.3232, 0.3279 by changing the saturation by 10% instead.


 67.5107, 0.3232,
0.3279

 67.5107, 0.3232,
0.3279


451.7604, 0.3183,
0.3284

 49.4998, 0.3243,
0.3278


115.6519, 0.3215,
0.3281

 35.0161, 0.3258,
0.3276


146.5509, 0.3208,
0.3282

 23.6753, 0.3276,
0.3274


182.5148, 0.3202,
0.3282

 15.0929, 0.3300,
0.3271

223.9279, 0.3197,
0.3283

 8.8846, 0.3334,
0.3267

271.1746, 0.3193,
0.3283

 4.6660, 0.3384,
0.3261

324.6394, 0.3189,

 2.0527, 0.3465,

0.3284

0.3250

384.7065, 0.3186,
0.3284

0.6378, 0.3730,
0.3229

0.0000, 0.0000,
0.0000

67.5107, 0.3232,
0.3279

67.5107, 0.3232,
0.3279

56.0687, 0.3422,
0.3261

80.6755, 0.3079,
0.3295

46.2700, 0.3660,
0.3243

94.8509, 0.2957,
0.3298

38.0416, 0.3953,
0.3225

94.9072, 0.2952,
0.3289

31.3020, 0.4310,
0.3209

■ 25.9622, 0.4727,
0.3198

■ 21.9236, 0.5185,
0.3195

■ 19.0749, 0.5640,
0.3205

■ 17.2861, 0.6028,
0.3228

■ 16.3930, 0.6284,
0.3260

Harmonies

Analogous

The Analogous color harmony consists of three colors that are next to each other on the color wheel.



67.5107, 0.3176, 0.3223



67.5107, 0.3232, 0.3279



67.5107, 0.3260, 0.3338

Triad

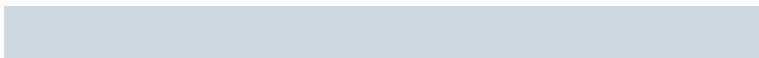
The Triadic color harmony groups three colors that are evenly spaced from another and form a triangle on the color wheel.



67.5107, 0.3232, 0.3279



67.5107, 0.3146, 0.3398



67.5107, 0.3004, 0.3194

Complementary

The Complementary color scheme is a pair of colors which are on the opposite of each other on the color wheel.



67.5107, 0.3232, 0.3279



73.6712, 0.3031, 0.3301

Split Complementary

Split-complementary colors differ from the complementary color scheme. The scheme consists of three colors, the original color and two neighbors of the complement color.



67.5107, 0.2996, 0.3240



67.5107, 0.3232, 0.3279



67.5107, 0.3078, 0.3359

Square

The Square scheme is like the rectangle color scheme, but the four colors are evenly spaced on the color wheel.



67.5107, 0.3232, 0.3279



67.5107, 0.3210, 0.3408



67.5107, 0.3023, 0.3300



67.5107, 0.3044, 0.3174

Rectangle

The Rectangle color scheme consists of four colors that form a rectangle on the color wheel.



67.5107, 0.3232, 0.3279



67.5107, 0.3258, 0.3372



67.5107, 0.3023, 0.3300



67.5107, 0.2998, 0.3206

Sweetspot

The Sweet Spot groups the original color and five complimentary colors.



67.5136, 0.3232, 0.3279



96.4870, 0.3157, 0.3287



68.0477, 0.3126, 0.3128



20.6890, 0.3156, 0.3287



0.0000, 0.0000, 0.0000



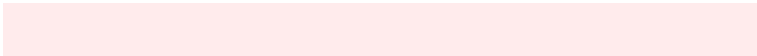
21.4041, 0.3127, 0.3290

Same Dimension

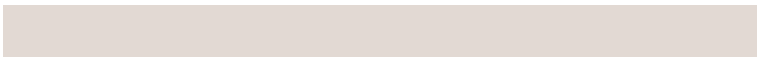
The Same Dimension uses a secret algorithm to generate beautiful new colors.



67.5136, 0.3232, 0.3279



86.5042, 0.3257, 0.3277



70.6249, 0.3233, 0.3358



13.7158, 0.3281, 0.3274



9.2511, 0.6324, 0.3257



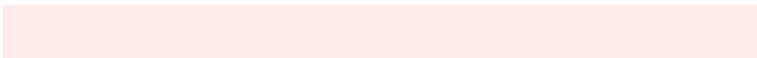
0.6467, 0.6111, 0.3140

Inverse Universe

The Inverse Universe completely reimagines the original color for something new.



67.5136, 0.3232, 0.3279



86.5042, 0.3257, 0.3277



70.3936, 0.3025, 0.3221



13.7158, 0.3281, 0.3274



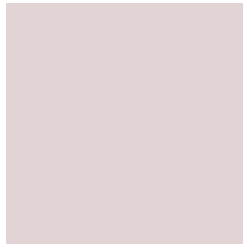
9.2511, 0.6324, 0.3257



0.6467, 0.6111, 0.3140

Previews

White Background



This preview shows how the Yxy color 67.5107, 0.3232, 0.3279 looks on a white background.

Color Contrast Check

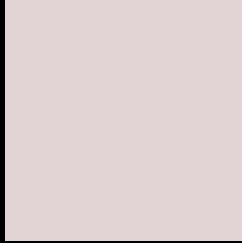
Large Text (above 18pt) WCAG AA × Fail

Any Text WCAG AA × Fail

Large Text (above 18pt) WCAG AAA × Fail

Any Text WCAG AAA × Fail

Black Background



This preview shows how the Yxy color 67.5107, 0.3232, 0.3279 looks on a black background.

Color Contrast Check

Large Text (above 18pt) WCAG AA ✓ Pass

Any Text WCAG AA ✓ Pass

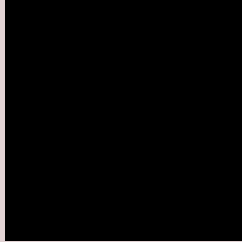
Large Text (above 18pt) WCAG AAA ✓ Pass

Any Text WCAG AAA ✓ Pass

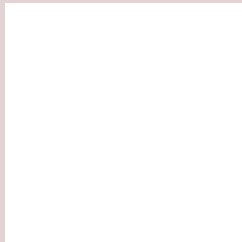
If you want to check with other color combinations, try the [Color Contrast Checker](#).

Yxy 67.5107, 0.3232, 0.3279

Background



This preview shows how black text looks on a background with the Yxy color 67.5107, 0.3232, 0.3279.



This preview shows how white text looks on a background with the Yxy color 67.5107, 0.3232, 0.3279.

Color Blindness Simulation

Color vision deficiency is a very complex topic, and I could not describe the different causes any better than Wikipedia does, so if you want to learn more, you should check out their [article about color blindness](#).

Dichromacy



Original Color

67.5107, 0.3232, 0.3279

Protanopia

67.2980, 0.3164, 0.3290

Deuteranopia

67.7487, 0.3304, 0.3237



Tritanopia

67.5312, 0.3158, 0.3118

Trichromacy



Original Color

67.5107, 0.3232, 0.3279

Protanomaly

67.2632, 0.3187, 0.3279

Deuteranomaly

67.5608, 0.3273, 0.3247

Tritanomaly

67.5914, 0.3184, 0.3182

Monochromacy



Original Color

67.5107, 0.3232, 0.3279

Achromatopsia

68.6685, 0.3127, 0.3290

Achromatomaly

68.2151, 0.3164, 0.3279

CSS Examples

Text

The CSS property to change the color of the text to Yxy 67.5107, 0.3232, 0.3279 is called "color". The color property can be set on classes, ids or directly on the HTML element.

This example shows how text in the color `rgb(226, 211, 212)` looks like.

```
.text, #text, p{  
    color:rgb(226, 211, 212)  
}
```

If you want to add a text shadow in that color use the text-shadow property, you can generate a text shadow directly with our [CSS Text Shadow Generator](#).

Here you see how black text with a 4 pixel rgb(226, 211, 212) colored shadow looks like.

```
.shadow{ text-shadow: 4px 4px 2px rgb(226, 211, 212) }
```

Border

The CSS property to change the border of an element to Yxy 67.5107, 0.3232, 0.3279 is called "border". The border property can be set on classes, ids or directly on the HTML element.

This example shows the color as border, it can be applied via the CSS property "border" or "border-color".

```
.border, #border, table{ border:4px solid rgb(226, 211, 212) }
```

If only the border color should be changed use the property `border-color`.

```
.border{ border-color:rgb(226, 211, 212) }
```

If you want to add a box shadow in that color use:

Here you see how a box with a 4 pixel `rgb(226, 211, 212)` colored shadow looks like.

```
.boxshadow{ -moz-box-shadow:4px 4px 4px  
4px rgb(226, 211, 212); -webkit-box-  
shadow:4px 4px 4px 4px rgb(226, 211, 212);  
box-shadow:4px 4px 4px 4px rgb(226, 211,  
212) }
```


Background

The CSS property to change the background color of an element to Yxy 67.5107, 0.3232, 0.3279 is called "background". The background property can be set on classes, ids or directly on the HTML element.

```
.background, #background, body{  
background: rgb(226, 211, 212) }
```

If only the background color should be changed can be used:

```
.background{ background-color: rgb(226,  
211, 212) }
```

This example shows the color as background, it is applied via the CSS property "background".

To optimize and compress your CSS code, you can use our [online CSS compressor and optimizer](#) based on csstidy. If you want to create a linear or radial gradient as background or border, check our [CSS Gradient Generator](#).

Hey! You found this booklet interesting? Support Converting Colors with the new Membership Option!

The pro membership hides all ads, plus gives you double the colors in the color bucket, and more awesome pro features!

[Learn more, Memberships starting at \\$2.50/m!](#)

**Follow me
on Twitter!**

@ConvertingColor