

Converting Colors

$Y_{xy}(67.3559, 0.3475, 0.3504)$

Have a look what the booklet for
Yxy(67.3559, 0.3475, 0.3504)
contains.

Yxy(67.1515, 0.3473, 0.3497)	3
Conversions	4
Details	6
Harmonies	12
Previews	24
Color Blindness Simulation	27
CSS Examples	30

Color

Yxy(67.1515, 0.3473, 0.3497)

Conversions

Conversions Part 1

Format	Color
Hex	ECD1BE
RGB	236, 209, 190
RGB Percent	93%, 82%, 75%
CMY	0.0745, 0.1804, 0.2547
CMYK	0.00, 0.11, 0.19, 0.07
HSL	25°, 55%, 84%
HSV	25°, 19%, 93%
XYZ	66.6906, 67.1515, 58.1839
YIQ	214.9070, 22.1910, -0.1850

Conversions

Conversions Part 2

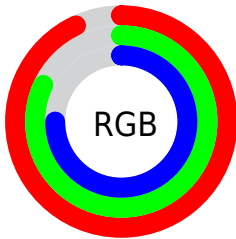
Format	Color
R _Y B	236, 222, 190
Decimal	15520190
CIE Lab	85.58, 6.46, 12.84
CIE LCh	86, 14.373, 63.309
Yxy	67.1515, 0.3473, 0.3497
Android (android.graphics.Color)	4293710270 (0xFFECD1BE)
YUV	214.9070, -12.2792, 18.4986
Hunter-Lab	81.9460, 1.8642, 15.2647

Details

The Yxy color **67.1515, 0.3473, 0.3497** is a light color, and the websafe version is hex **FFCCCC**. A complement of this color would be **66.6555, 0.2822, 0.3074**, and the grayscale version is **67.9658, 0.3127, 0.3290**.

A 20% lighter version of the original color is **99.4338, 0.3179, 0.3376**, and **34.9521, 0.3557, 0.3546** is the 20% darker color. If you saturate the color by 10%, you get **59.6946, 0.3693, 0.3610**, and if you desaturate by 10%, it is **75.3736, 0.3283, 0.3388**.

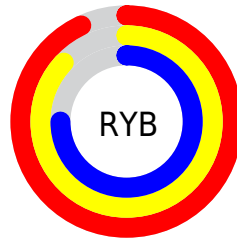
Distribution



Red (93%)

Green (82%)

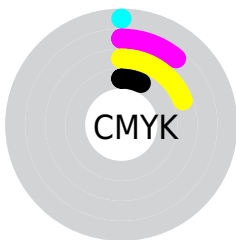
Blue (75%)



Red (93%)

Yellow (87%)

Blue (75%)

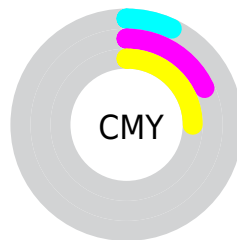


Cyan (0%)

Magenta (11%)

Yellow (19%)

Black (7%)



Cyan (7%)


Magenta (18%)


Yellow (25%)

Brightness & Saturation Gradients


These gradients show how the Yxy color 67.1515, 0.3473, 0.3497 changes by changing the brightness by 10 percent. The first figure shows a shift by +10% for each color and the second figure -10%.


Similar to the brightness gradients but the following saturation gradients show a change of the Yxy color 67.1515, 0.3473, 0.3497 by changing the saturation by 10% instead.


 67.1515, 0.3473,
0.3497

 67.1515, 0.3473,
0.3497

450.4838, 0.3310,
0.3402

 49.2078, 0.3511,
0.3519


 115.1375, 0.3416,
0.3464

 34.7843, 0.3559,
0.3545


145.9485, 0.3394,
0.3451

 23.4968, 0.3619,
0.3578


181.8174, 0.3375,
0.3440

 14.9608, 0.3700,
0.3622

223.1285, 0.3358,
0.3431

 8.7918, 0.3811,
0.3680

270.2664, 0.3344,
0.3422

 4.6057, 0.3975,
0.3761

323.6153, 0.3331,

 2.0178, 0.4237,

0.3415

0.3879

383.5596, 0.3320,
0.3408

0.6178, 0.5466,
0.4534

0.0000, 0.0000,
0.0000

67.1515, 0.3473,
0.3497

67.1515, 0.3473,
0.3497

59.6946, 0.3693,
0.3610

75.3736, 0.3283,
0.3388

52.9707, 0.3944,
0.3723

84.3739, 0.3119,
0.3285

46.9587, 0.4226,
0.3829

93.7943, 0.3012,
0.3246

41.6326, 0.4532,
0.3917

96.5733, 0.3011,
0.3290

■ 36.9648, 0.4851,
0.3977

■ 32.9253, 0.5163,
0.3993

■ 29.4808, 0.5444,
0.3957

■ 26.5880, 0.5675,
0.3871

■ 26.4497, 0.5687,
0.3867

Harmonies

Analogous

The Analogous color harmony consists of three colors that are next to each other on the color wheel.



67.1515, 0.3460, 0.3357



67.1515, 0.3473, 0.3497



67.1515, 0.3390, 0.3587

Triad

The Triadic color harmony groups three colors that are evenly spaced from another and form a triangle on the color wheel.



67.1515, 0.3473, 0.3497



67.1515, 0.2901, 0.3373



67.1515, 0.3010, 0.3002

Complementary

The Complementary color scheme is a pair of colors which are on the opposite of each other on the color wheel.



67.1515, 0.3473, 0.3497



66.6555, 0.2822, 0.3074

Split Complementary

Split-complementary colors differ from the complementary color scheme. The scheme consists of three colors, the original color and two neighbors of the complement color.



67.1515, 0.2866, 0.2999



67.1515, 0.3473, 0.3497



67.1515, 0.2805, 0.3208

Square

The Square scheme is like the rectangle color scheme, but the four colors are evenly spaced on the color wheel.



67.1515, 0.3473, 0.3497



67.1515, 0.3059, 0.3519



67.1515, 0.2792, 0.3072



67.1515, 0.3189, 0.3077

Rectangle

The Rectangle color scheme consists of four colors that form a rectangle on the color wheel.



67.1515, 0.3473, 0.3497



67.1515, 0.3294, 0.3604



67.1515, 0.2792, 0.3072



67.1515, 0.2956, 0.2992

Sweetspot

The Sweet Spot groups the original color and five complimentary colors.



67.1545, 0.3473, 0.3497



93.4522, 0.3223, 0.3351



59.7196, 0.3290, 0.2994



19.8545, 0.3234, 0.3358



0.0000, 0.0000, 0.0000



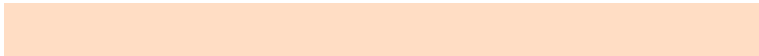
21.4041, 0.3127, 0.3290

Same Dimension

The Same Dimension uses a secret algorithm to generate beautiful new colors.



67.1545, 0.3473, 0.3497



76.7348, 0.3549, 0.3538



78.9323, 0.3429, 0.3729



16.0748, 0.3283, 0.3388



14.8202, 0.5658, 0.3889



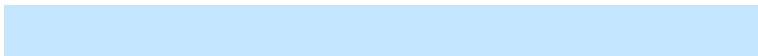
1.3492, 0.5410, 0.4087

Inverse Universe

The Inverse Universe completely reimagines the original color for something new.



66.6555, 0.2822, 0.3074



76.0451, 0.2765, 0.3028



55.8761, 0.2806, 0.2809



16.0196, 0.2981, 0.3190



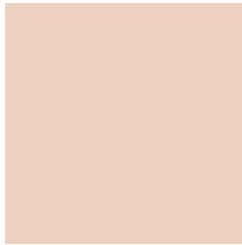
13.7204, 0.1856, 0.1881



1.2662, 0.1916, 0.2096

Previews

White Background



This preview shows how the Yxy color 67.1515, 0.3473, 0.3497 looks on a white background.

Color Contrast Check

Large Text (above 18pt) WCAG AA × Fail

Any Text WCAG AA × Fail

Large Text (above 18pt) WCAG AAA × Fail

Any Text WCAG AAA × Fail

Black Background



This preview shows how the Yxy color 67.1515, 0.3473, 0.3497 looks on a black background.

Color Contrast Check

Large Text (above 18pt) WCAG AA ✓ Pass

Any Text WCAG AA ✓ Pass

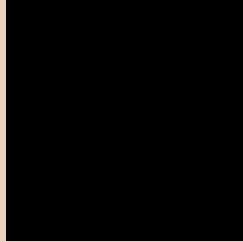
Large Text (above 18pt) WCAG AAA ✓ Pass

Any Text WCAG AAA ✓ Pass

If you want to check with other color combinations, try the [Color Contrast Checker](#).

Yxy 67.1515, 0.3473, 0.3497

Background



This preview shows how black text looks on a background with the Yxy color 67.1515, 0.3473, 0.3497.



This preview shows how white text looks on a background with the Yxy color 67.1515, 0.3473, 0.3497.

Color Blindness Simulation

Color vision deficiency is a very complex topic, and I could not describe the different causes any better than Wikipedia does, so if you want to learn more, you should check out their [article about color blindness](#).

Dichromacy



Original Color

67.1515, 0.3473, 0.3497

Protanopia

67.0822, 0.3350, 0.3525

Deuteranopia

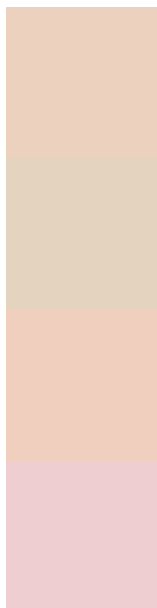
66.9589, 0.3528, 0.3451



Tritanopia

67.4084, 0.3280, 0.3122

Trichromacy



Original Color

67.1515, 0.3473, 0.3497

Protanomaly

67.3425, 0.3397, 0.3523

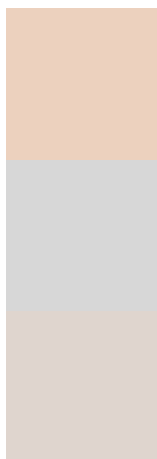
Deuteranomaly

66.9125, 0.3502, 0.3463

Tritanomaly

67.1465, 0.3352, 0.3248

Monochromacy



Original Color

67.1515, 0.3473, 0.3497

Achromatopsia

67.9542, 0.3127, 0.3290

Achromatomaly

67.7327, 0.3250, 0.3368

CSS Examples

Text

The CSS property to change the color of the text to Yxy 67.1515, 0.3473, 0.3497 is called "color". The color property can be set on classes, ids or directly on the HTML element.

This example shows how text in the color `rgb(236, 209, 190)` looks like.

```
.text, #text, p{  
    color:rgb(236, 209, 190)  
}
```

If you want to add a text shadow in that color use the text-shadow property, you can generate a text shadow directly with our [CSS Text Shadow Generator](#).

Here you see how black text with a 4 pixel rgb(236, 209, 190) colored shadow looks like.

```
.shadow{ text-shadow: 4px 4px 2px rgb(236, 209, 190) }
```

Border

The CSS property to change the border of an element to Yxy 67.1515, 0.3473, 0.3497 is called "border". The border property can be set on classes, ids or directly on the HTML element.

This example shows the color as border, it can be applied via the CSS property "border" or "border-color".

```
.border, #border, table{ border:4px solid rgb(236, 209, 190) }
```

If only the border color should be changed use the property border-color.

```
.border{ border-color:rgb(236, 209, 190) }
```

If you want to add a box shadow in that color use:

Here you see how a box with a 4 pixel rgb(236, 209, 190) colored shadow looks like.

```
.boxshadow{ -moz-box-shadow:4px 4px 4px  
4px rgb(236, 209, 190); -webkit-box-  
shadow:4px 4px 4px 4px rgb(236, 209, 190);  
box-shadow:4px 4px 4px 4px rgb(236, 209,  
190) }
```


Background

The CSS property to change the background color of an element to Yxy 67.1515, 0.3473, 0.3497 is called "background". The background property can be set on classes, ids or directly on the HTML element.

```
.background, #background, body{  
background: rgb(236, 209, 190) }
```

If only the background color should be changed can be used:

```
.background{ background-color: rgb(236,  
209, 190) }
```

This example shows the color as background, it is applied via the CSS property "background".

To optimize and compress your CSS code, you can use our [online CSS compressor and optimizer](#) based on csstidy. If you want to create a linear or radial gradient as background or border, check our [CSS Gradient Generator](#).

Hey! You found this booklet interesting? Support Converting Colors with the new Membership Option!

The pro membership hides all ads, plus gives you double the colors in the color bucket, and more awesome pro features!

[Learn more, Memberships starting at \\$2.50/m!](#)

**Follow me
on Twitter!**

@ConvertingColor