

Converting Colors

$Yxy(67.3680, 0.3434, 0.3479)$

Have a look what the booklet for
Yxy(67.3680, 0.3434, 0.3479)
contains.

Yxy(67.4359, 0.3433, 0.3476)	3
Conversions	4
Details	6
Harmonies	12
Previews	24
Color Blindness Simulation	27
CSS Examples	30

Color

Yxy(67.4359, 0.3433, 0.3476)

Conversions

Conversions Part 1

Format	Color
Hex	EAD2C1
RGB	234, 210, 193
RGB Percent	92%, 82%, 76%
CMY	0.0824, 0.1764, 0.2431
CMYK	0.00, 0.10, 0.18, 0.08
HSL	25°, 49%, 84%
HSV	25°, 18%, 92%
XYZ	66.6017, 67.4359, 59.9667
YIQ	215.2380, 19.7610, -0.1990

Conversions

Conversions Part 2

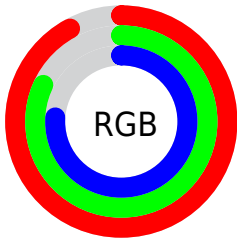
Format	Color
R_{YB}	234, 222, 193
Decimal	15389377
CIE _{Lab}	85.72, 5.64, 11.45
CIE _{LCh}	86, 12.762, 63.766
Yxy	67.4359, 0.3433, 0.3476
Android (android.graphics.Color)	4293579457 (0xFFEAD2C1)
YUV	215.2380, -10.9633, 16.4543
Hunter-Lab	82.1194, 1.0609, 14.1877

Details

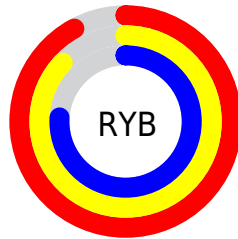
The Yxy color **67.4359, 0.3433, 0.3476** is a light color, and the websafe version is hex **FFCCCC**. A complement of this color would be **66.9013, 0.2854, 0.3097**, and the grayscale version is **68.1918, 0.3127, 0.3290**.

A 20% lighter version of the original color is **99.6196, 0.3162, 0.3347**, and **35.1060, 0.3513, 0.3533** is the 20% darker color. If you saturate the color by 10%, you get **60.0005, 0.3647, 0.3589**, and if you desaturate by 10%, it is **75.6212, 0.3248, 0.3367**.

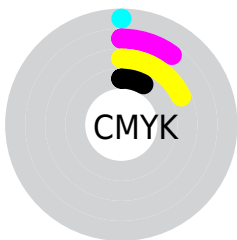
Distribution



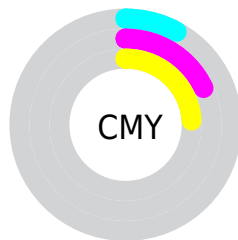
- Red (92%)
- Green (82%)
- Blue (76%)



- Red (92%)
- Yellow (87%)
- Blue (76%)



- Cyan (0%)
- Magenta (10%)
- Yellow (18%)
- Black (8%)



- Cyan (8%)
- Magenta (18%)
- Yellow (24%)

Brightness & Saturation Gradients

These gradients show how the Yxy color 67.4359, 0.3433, 0.3476 changes by changing the brightness by 10 percent. The first figure shows a shift by +10% for each color and the second figure -10%.


Similar to the brightness gradients but the following saturation gradients show a change of the Yxy color 67.4359, 0.3433, 0.3476 by changing the saturation by 10% instead.


 67.4359, 0.3433,
0.3476

 67.4359, 0.3433,
0.3476


451.4948, 0.3289,
0.3390

 49.4390, 0.3467,
0.3495


 115.5448, 0.3382,
0.3446

 34.9678, 0.3508,
0.3520


146.4255, 0.3363,
0.3435

 23.6381, 0.3562,
0.3550


182.3696, 0.3346,
0.3425

 15.0654, 0.3633,
0.3589

223.7615, 0.3332,
0.3416

 8.8653, 0.3731,
0.3642

270.9856, 0.3319,
0.3408

 4.6534, 0.3876,
0.3717

324.4262, 0.3308,

 2.0454, 0.4109,

0.3402

0.3830

384.4678, 0.3298,
0.3396

0.6336, 0.5387,
0.4613

0.0000, 0.0000,
0.0000

67.4359, 0.3433,
0.3476

67.4359, 0.3433,
0.3476

60.0005, 0.3647,
0.3589

75.6212, 0.3248,
0.3367

53.2837, 0.3891,
0.3703

84.5684, 0.3090,
0.3265

47.2652, 0.4166,
0.3811

93.7606, 0.2999,
0.3251

41.9202, 0.4467,
0.3905

96.2301, 0.2999,
0.3290

■ 37.2223, 0.4784,
0.3972

■ 33.1426, 0.5098,
0.3998

■ 29.6496, 0.5386,
0.3974

■ 26.7060, 0.5625,
0.3895

■ 26.0490, 0.5680,
0.3872

Harmonies

Analogous

The Analogous color harmony consists of three colors that are next to each other on the color wheel.



67.4359, 0.3423, 0.3352



67.4359, 0.3433, 0.3476



67.4359, 0.3359, 0.3554

Triad

The Triadic color harmony groups three colors that are evenly spaced from another and form a triangle on the color wheel.



67.4359, 0.3433, 0.3476



67.4359, 0.2925, 0.3362



67.4359, 0.3026, 0.3034

Complementary

The Complementary color scheme is a pair of colors which are on the opposite of each other on the color wheel.



67.4359, 0.3433, 0.3476



66.9013, 0.2854, 0.3097

Split Complementary

Split-complementary colors differ from the complementary color scheme. The scheme consists of three colors, the original color and two neighbors of the complement color.



67.4359, 0.2897, 0.3031



67.4359, 0.3433, 0.3476



67.4359, 0.2840, 0.3216

Square

The Square scheme is like the rectangle color scheme, but the four colors are evenly spaced on the color wheel.



67.4359, 0.3433, 0.3476



67.4359, 0.3064, 0.3490



67.4359, 0.2830, 0.3095



67.4359, 0.3185, 0.3102

Rectangle

The Rectangle color scheme consists of four colors that form a rectangle on the color wheel.



67.4359, 0.3433, 0.3476



67.4359, 0.3273, 0.3568



67.4359, 0.2830, 0.3095



67.4359, 0.2978, 0.3025

Sweetspot

The Sweet Spot groups the original color and five complimentary colors.



67.4389, 0.3433, 0.3476



94.5371, 0.3207, 0.3341



60.6781, 0.3271, 0.3025



20.0746, 0.3218, 0.3349



0.0000, 0.0000, 0.0000



21.4041, 0.3127, 0.3290

Same Dimension

The Same Dimension uses a secret algorithm to generate beautiful new colors.



67.4389, 0.3433, 0.3476



78.6276, 0.3506, 0.3516



77.8730, 0.3397, 0.3684



16.0804, 0.3282, 0.3388



14.8749, 0.5652, 0.3894



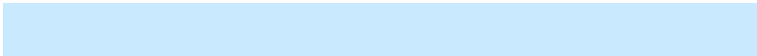
1.3538, 0.5404, 0.4091

Inverse Universe

The Inverse Universe completely reimagines the original color for something new.



66.9013, 0.2854, 0.3097



77.8583, 0.2797, 0.3052



57.2632, 0.2842, 0.2863



16.0138, 0.2981, 0.3190



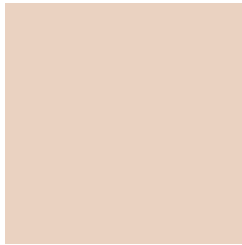
13.6370, 0.1854, 0.1873



1.2599, 0.1914, 0.2089

Previews

White Background



This preview shows how the Yxy color 67.4359, 0.3433, 0.3476 looks on a white background.

Color Contrast Check

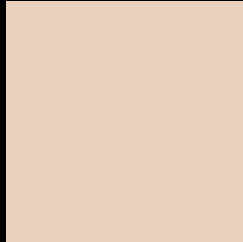
Large Text (above 18pt) WCAG AA × Fail

Any Text WCAG AA × Fail

Large Text (above 18pt) WCAG AAA × Fail

Any Text WCAG AAA × Fail

Black Background



This preview shows how the Yxy color 67.4359, 0.3433, 0.3476 looks on a black background.

Color Contrast Check

Large Text (above 18pt) WCAG AA ✓ Pass

Any Text WCAG AA ✓ Pass

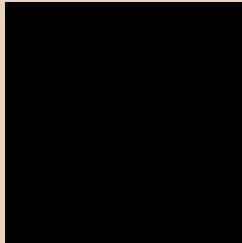
Large Text (above 18pt) WCAG AAA ✓ Pass

Any Text WCAG AAA ✓ Pass

If you want to check with other color combinations, try the [Color Contrast Checker](#).

Yxy 67.4359, 0.3433, 0.3476

Background



This preview shows how black text looks on a background with the Yxy color 67.4359, 0.3433, 0.3476.



This preview shows how white text looks on a background with the Yxy color 67.4359, 0.3433, 0.3476.

Color Blindness Simulation

Color vision deficiency is a very complex topic, and I could not describe the different causes any better than Wikipedia does, so if you want to learn more, you should check out their [article about color blindness](#).

Dichromacy



Original Color

67.4359, 0.3433, 0.3476

Protanopia

67.7212, 0.3327, 0.3502

Deuteranopia

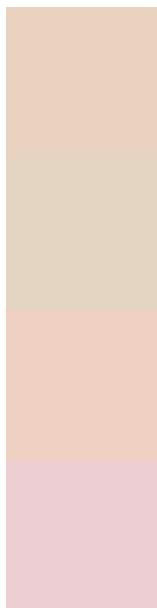
67.5754, 0.3503, 0.3430



Tritanopia

67.5937, 0.3256, 0.3121

Trichromacy



Original Color

67.4359, 0.3433, 0.3476

Protanomaly

67.8144, 0.3366, 0.3501

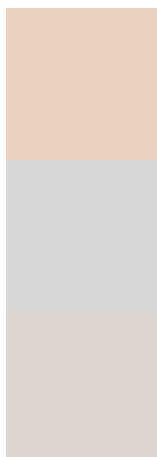
Deuteranomaly

67.5321, 0.3477, 0.3441

Tritanomaly

67.3333, 0.3328, 0.3248

Monochromacy



Original Color

67.4359, 0.3433, 0.3476

Achromatopsia

67.9542, 0.3127, 0.3290

Achromatomaly

67.6231, 0.3236, 0.3357

CSS Examples

Text

The CSS property to change the color of the text to Yxy 67.4359, 0.3433, 0.3476 is called "color". The color property can be set on classes, ids or directly on the HTML element.

This example shows how text in the color `rgb(234, 210, 193)` looks like.

```
.text, #text, p{  
    color:rgb(234, 210, 193)  
}
```

If you want to add a text shadow in that color use the text-shadow property, you can generate a text shadow directly with our [CSS Text Shadow Generator](#).

Here you see how black text with a 4 pixel rgb(234, 210, 193) colored shadow looks like.

```
.shadow{ text-shadow: 4px 4px 2px rgb(234, 210, 193) }
```

Border

The CSS property to change the border of an element to Yxy 67.4359, 0.3433, 0.3476 is called "border". The border property can be set on classes, ids or directly on the HTML element.

This example shows the color as border, it can be applied via the CSS property "border" or "border-color".

```
.border, #border, table{ border:4px solid rgb(234, 210, 193) }
```

If only the border color should be changed use the property `border-color`.

```
.border{ border-color:rgb(234, 210, 193) }
```

If you want to add a box shadow in that color use:

Here you see how a box with a 4 pixel `rgb(234, 210, 193)` colored shadow looks like.

```
.boxshadow{ -moz-box-shadow:4px 4px 4px  
4px rgb(234, 210, 193); -webkit-box-  
shadow:4px 4px 4px 4px rgb(234, 210, 193);  
box-shadow:4px 4px 4px 4px rgb(234, 210,  
193) }
```


Background

The CSS property to change the background color of an element to Yxy 67.4359, 0.3433, 0.3476 is called "background". The background property can be set on classes, ids or directly on the HTML element.

```
.background, #background, body{  
background: rgb(234, 210, 193) }
```

If only the background color should be changed can be used:

```
.background{ background-color: rgb(234,  
210, 193) }
```

This example shows the color as background, it is applied via the CSS property "background".

To optimize and compress your CSS code, you can use our [online CSS compressor and optimizer](#) based on csstidy. If you want to create a linear or radial gradient as background or border, check our [CSS Gradient Generator](#).

Hey! You found this booklet interesting? Support Converting Colors with the new Membership Option!

The pro membership hides all ads, plus gives you double the colors in the color bucket, and more awesome pro features!

[Learn more, Memberships starting at \\$2.50/m!](#)

**Follow me
on Twitter!**

@ConvertingColor