

# Converting Colors

$Yxy(67.4297, 0.3288, 0.3270)$

Have a look what the booklet for  
Yxy(67.4297, 0.3288, 0.3270)  
contains.

<b>Yxy(67.4599, 0.3287, 0.3269)</b> .....	3
<b><i>Conversions</i></b> .....	4
<b><i>Details</i></b> .....	6
<b><i>Harmonies</i></b> .....	12
<b><i>Previews</i></b> .....	24
<b><i>Color Blindness Simulation</i></b> .....	27
<b><i>CSS Examples</i></b> .....	30

# Color

**Yxy(67.4599, 0.3287, 0.3269)**

# Conversions

## Conversions Part 1

Format	Color
Hex	E8D1D3
RGB	232, 209, 211
RGB Percent	91%, 82%, 83%
CMY	0.0903, 0.1803, 0.1726
CMYK	0.00, 0.10, 0.09, 0.09
HSL	355°, 33%, 86%
HSV	355°, 10%, 91%
XYZ	67.8314, 67.4599, 71.0712
YIQ	216.1050, 13.0660, 5.4980

# Conversions

## Conversions Part 2

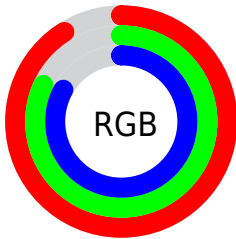
Format	Color
R <sub>Y</sub> B	232, 209, 211
Decimal	15258067
CIE Lab	85.74, 8.31, 1.92
CIE LCh	86, 8.524, 12.992
Yxy	67.4599, 0.3287, 0.3269
Android (android.graphics.Color)	4293448147 (0xFFE8D1D3)
YUV	216.1050, -2.5168, 13.9399
Hunter-Lab	82.1340, 3.6820, 6.1896

# Details

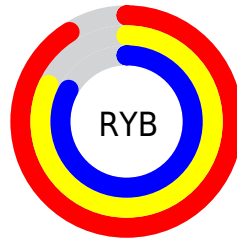
The Yxy color  $67.4599, 0.3287, 0.3269$  is a light color, and the websafe version is hex `CCCCCC`. A complement of this color would be  $76.9717, 0.2987, 0.3311$ , and the grayscale version is  $68.7555, 0.3127, 0.3290$ .

A 20% lighter version of the original color is  $100.0000, 0.3127, 0.3290$ , and  $35.1071, 0.3319, 0.3262$  is the 20% darker color. If you saturate the color by 10%, you get  $55.9016, 0.3488, 0.3246$ , and if you desaturate by 10%, it is  $80.8217, 0.3126, 0.3290$ .

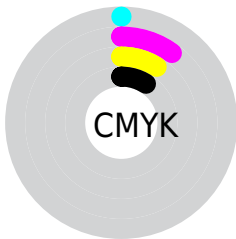
# Distribution



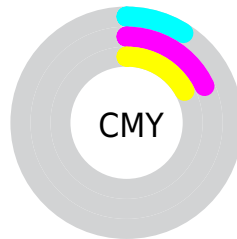
- Red (91%)
- Green (82%)
- Blue (83%)



- Red (91%)
- Yellow (82%)
- Blue (83%)



- Cyan (0%)
- Magenta (10%)
- Yellow (9%)
- Black (9%)




- Cyan (9%)
- Magenta (18%)
- Yellow (17%)


# Brightness & Saturation Gradients

These gradients show how the Yxy color 67.4599, 0.3287, 0.3269 changes by changing the brightness by 10 percent. The first figure shows a shift by +10% for each color and the second figure -10%.

Similar to the brightness gradients but the following saturation gradients show a change of the Yxy color 67.4599, 0.3287, 0.3269 by changing the saturation by 10% instead.




 67.4599, 0.3287,  
0.3269

 67.4599, 0.3287,  
0.3269


451.5800, 0.3212,  
0.3279

 49.4585, 0.3305,  
0.3267


115.5792, 0.3261,  
0.3273

 34.9833, 0.3326,  
0.3263


146.4658, 0.3250,  
0.3274

 23.6500, 0.3354,  
0.3259


182.4162, 0.3242,  
0.3275

 15.0742, 0.3391,  
0.3254

223.8149, 0.3234,  
0.3276

 8.8715, 0.3443,  
0.3246

271.0463, 0.3228,  
0.3277

 4.6574, 0.3519,  
0.3234

324.4946, 0.3222,

 2.0477, 0.3644,

0.3278

0.3213

384.5444, 0.3216,  
0.3279

0.6350, 0.4034,  
0.3177

0.0000, 0.0000,  
0.0000

67.4599, 0.3287,  
0.3269

67.4599, 0.3287,  
0.3269

55.9016, 0.3488,  
0.3246

80.8217, 0.3126,  
0.3290

46.0610, 0.3739,  
0.3223

95.7888, 0.2996,  
0.3306

37.8590, 0.4047,  
0.3201

95.8923, 0.2987,  
0.3290

31.2064, 0.4417,  
0.3182

■ 26.0057, 0.4844,  
0.3170

■ 22.1484, 0.5302,  
0.3170

■ 19.5106, 0.5742,  
0.3186

■ 17.9456, 0.6098,  
0.3219

■ 17.2088, 0.6321,  
0.3256

# Harmonies

## Analogous

The Analogous color harmony consists of three colors that are next to each other on the color wheel.



67.4599, 0.3199, 0.3184



67.4599, 0.3287, 0.3269



67.4599, 0.3332, 0.3361

# Triad

The Triadic color harmony groups three colors that are evenly spaced from another and form a triangle on the color wheel.



67.4599, 0.3287, 0.3269



67.4599, 0.3160, 0.3460



67.4599, 0.2936, 0.3143

# Complementary

The Complementary color scheme is a pair of colors which are on the opposite of each other on the color wheel.



67.4599, 0.3287, 0.3269



76.9717, 0.2987, 0.3311

# Split Complementary

Split-complementary colors differ from the complementary color scheme. The scheme consists of three colors, the original color and two neighbors of the complement color.



67.4599, 0.2927, 0.3214



67.4599, 0.3287, 0.3269



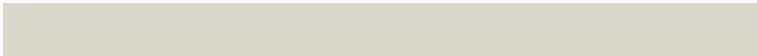
67.4599, 0.3054, 0.3400

# Square

The Square scheme is like the rectangle color scheme, but the four colors are evenly spaced on the color wheel.



67.4599, 0.3287, 0.3269



67.4599, 0.3258, 0.3473



67.4599, 0.2969, 0.3309



67.4599, 0.2996, 0.3111



# Rectangle

The Rectangle color scheme consists of four colors that form a rectangle on the color wheel.



67.4599, 0.3287, 0.3269



67.4599, 0.3331, 0.3414



67.4599, 0.2969, 0.3309



67.4599, 0.2927, 0.3163

# Sweetspot

The Sweet Spot groups the original color and five complimentary colors.



67.4629, 0.3287, 0.3269



94.7738, 0.3172, 0.3284



68.2031, 0.3122, 0.3046



19.9941, 0.3185, 0.3282



0.0000, 0.0000, 0.0000



21.4041, 0.3127, 0.3290



# Same Dimension

The Same Dimension uses a secret algorithm to generate beautiful new colors.



67.4629, 0.3287, 0.3269



80.3350, 0.3327, 0.3264



72.0029, 0.3290, 0.3389



14.3881, 0.3279, 0.3270



9.5599, 0.6302, 0.3245



0.7135, 0.6057, 0.3110



# Inverse Universe

The Inverse Universe completely reimagines the original color for something new.



67.4629, 0.3287, 0.3269



80.3350, 0.3327, 0.3264



72.0470, 0.2974, 0.3189



14.3881, 0.3279, 0.3270



9.5599, 0.6302, 0.3245

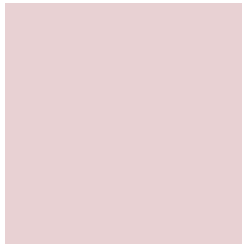


0.7135, 0.6057, 0.3110



# Previews

## White Background



This preview shows how the Yxy color 67.4599, 0.3287, 0.3269 looks on a white background.

## Color Contrast Check

Large Text (above 18pt) WCAG AA × Fail

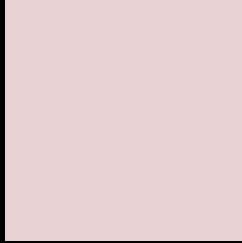
Any Text WCAG AA × Fail

Large Text (above 18pt) WCAG AAA × Fail

Any Text WCAG AAA × Fail



# Black Background



This preview shows how the Yxy color 67.4599, 0.3287, 0.3269 looks on a black background.

## Color Contrast Check

Large Text (above 18pt) WCAG AA ✓ Pass

Any Text WCAG AA ✓ Pass

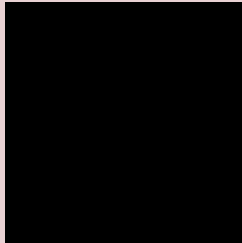
Large Text (above 18pt) WCAG AAA ✓ Pass

Any Text WCAG AAA ✓ Pass

If you want to check with other color combinations, try the [Color Contrast Checker](#).

**Yxy 67.4599, 0.3287, 0.3269**

## **Background**



This preview shows how black text looks on a background with the Yxy color 67.4599, 0.3287, 0.3269.



This preview shows how white text looks on a background with the Yxy color 67.4599, 0.3287, 0.3269.

# Color Blindness Simulation

Color vision deficiency is a very complex topic, and I could not describe the different causes any better than Wikipedia does, so if you want to learn more, you should check out their [article about color blindness](#).

## Dichromacy



### Original Color

67.4599, 0.3287, 0.3269

### Protanopia

67.2980, 0.3164, 0.3290

### Deuteranopia

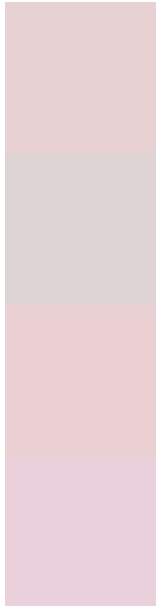
67.1617, 0.3320, 0.3248



## Tritanopia

67.4458, 0.3218, 0.3120

# Trichromacy



## Original Color

67.4599, 0.3287, 0.3269

## Protanomaly

67.5284, 0.3209, 0.3290

## Deuteranomaly

67.4771, 0.3311, 0.3258

## Tritanomaly

67.5499, 0.3238, 0.3173

# Monochromacy



## Original Color

67.4599, 0.3287, 0.3269

## Achromatopsia

68.6685, 0.3127, 0.3290

## Achromatomaly

67.9731, 0.3187, 0.3279

# CSS Examples

## Text

The CSS property to change the color of the text to Yxy 67.4599, 0.3287, 0.3269 is called "color". The color property can be set on classes, ids or directly on the HTML element.

This example shows how text in the color `rgb(232, 209, 211)` looks like.

```
.text, #text, p{  
    color:rgb(232, 209, 211)  
}
```

If you want to add a text shadow in that color use the text-shadow property, you can generate a text shadow directly with our [CSS Text Shadow Generator](#).

Here you see how black text with a 4 pixel rgb(232, 209, 211) colored shadow looks like.

```
.shadow{ text-shadow: 4px 4px 2px rgb(232, 209, 211) }
```

## Border

The CSS property to change the border of an element to Yxy 67.4599, 0.3287, 0.3269 is called "border". The border property can be set on classes, ids or directly on the HTML element.

This example shows the color as border, it can be applied via the CSS property "border" or "border-color".

```
.border, #border, table{ border:4px solid rgb(232, 209, 211) }
```

If only the border color should be changed use the property `border-color`.

```
.border{ border-color:rgb(232, 209, 211) }
```

If you want to add a box shadow in that color use:

Here you see how a box with a 4 pixel `rgb(232, 209, 211)` colored shadow looks like.

```
.boxshadow{ -moz-box-shadow:4px 4px 4px  
4px rgb(232, 209, 211); -webkit-box-  
shadow:4px 4px 4px 4px rgb(232, 209, 211);  
box-shadow:4px 4px 4px 4px rgb(232, 209,  
211) }
```



# Background

The CSS property to change the background color of an element to Yxy 67.4599, 0.3287, 0.3269 is called "background". The background property can be set on classes, ids or directly on the HTML element.

```
.background, #background, body{  
background: rgb(232, 209, 211) }
```

If only the background color should be changed can be used:

```
.background{ background-color: rgb(232,  
209, 211) }
```

This example shows the color as background, it is applied via the CSS property "background".

To optimize and compress your CSS code, you can use our [online CSS compressor and optimizer](#) based on csstidy. If you want to create a linear or radial gradient as background or border, check our [CSS Gradient Generator](#).

Hey! You found this booklet interesting? Support Converting Colors with the new Membership Option!

The pro membership hides all ads, plus gives you double the colors in the color bucket, and more awesome pro features!

**[Learn more, Memberships starting at \\$2.50/m!](#)**

**Follow me  
on Twitter!**

@ConvertingColor