

Converting Colors

Yxy(67.4427, 0.3371, 0.3444)

Have a look what the booklet for
Yxy(67.4427, 0.3371, 0.3444)
contains.

Yxy(67.4427, 0.3371, 0.3444)	3
Conversions	4
Details	6
Harmonies	12
Previews	24
Color Blindness Simulation	27
CSS Examples	30

Color

Yxy(67.4427, 0.3371, 0.3444)

Conversions

Conversions Part 1

Format	Color
Hex	E6D3C5
RGB	230, 211, 197
RGB Percent	90%, 83%, 77%
CMY	0.0979, 0.1726, 0.2274
CMYK	0.00, 0.08, 0.14, 0.10
HSL	25°, 40%, 84%
HSV	25°, 14%, 90%
XYZ	66.0132, 67.4427, 62.3708
YIQ	215.0850, 15.8180, -0.3260

Conversions

Conversions Part 2

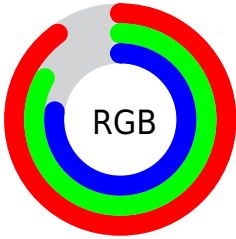
Format	Color
R _Y B	230, 221, 197
Decimal	15127493
CIE Lab	85.73, 4.31, 9.29
CIE LCh	86, 10.244, 65.092
Yxy	67.4427, 0.3371, 0.3444
Android (android.graphics.Color)	4293317573 (0xFFE6D3C5)
YUV	215.0850, -8.9159, 13.0805
Hunter-Lab	82.1235, -0.2329, 12.4572

Details

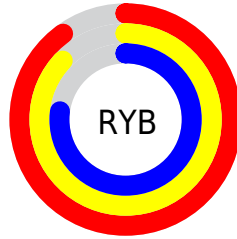
The Yxy color **67.4427, 0.3371, 0.3444** is a light color, and the websafe version is hex **CCCCCC**. A complement of this color would be **66.7241, 0.2904, 0.3131**, and the grayscale version is **68.0734, 0.3127, 0.3290**.

A 20% lighter version of the original color is **99.9358, 0.3133, 0.3300**, and **35.0958, 0.3430, 0.3492** is the 20% darker color. If you saturate the color by 10%, you get **60.1503, 0.3574, 0.3558**, and if you desaturate by 10%, it is **75.4456, 0.3196, 0.3335**.

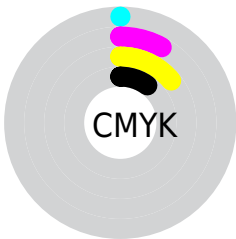
Distribution



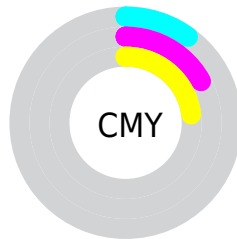
- Red (90%)
- Green (83%)
- Blue (77%)



- Red (90%)
- Yellow (87%)
- Blue (77%)



- Cyan (0%)
- Magenta (8%)
- Yellow (14%)
- Black (10%)



- Cyan (10%)
- Magenta (17%)
- Yellow (23%)

Brightness & Saturation Gradients

These gradients show how the Yxy color 67.4427, 0.3371, 0.3444 changes by changing the brightness by 10 percent. The first figure shows a shift by +10% for each color and the second figure -10%.

Similar to the brightness gradients but the following saturation gradients show a change of the Yxy color 67.4427, 0.3371, 0.3444 by changing the saturation by 10% instead.

67.4427, 0.3371,
0.3444

67.4427, 0.3371,
0.3444

451.5189, 0.3256,
0.3373

49.4445, 0.3398,
0.3460

115.5545, 0.3331,
0.3419

34.9722, 0.3431,
0.3480

146.4369, 0.3315,
0.3410

23.6415, 0.3474,
0.3506

182.3828, 0.3302,
0.3401

15.0679, 0.3530,
0.3539

223.7767, 0.3290,
0.3394

8.8670, 0.3609,
0.3585

271.0028, 0.3280,
0.3388

4.6546, 0.3725,
0.3650

324.4456, 0.3271,

2.0460, 0.3913,

0.3382

384.4895, 0.3263,
0.3377

0.3751

0.6340, 0.5120,
0.4585

0.0000, 0.0000,
0.0000

67.4427, 0.3371,
0.3444

67.4427, 0.3371,
0.3444

60.1503, 0.3574,
0.3558

75.4456, 0.3196,
0.3335

53.5393, 0.3807,
0.3675

84.1696, 0.3045,
0.3233

47.5911, 0.4070,
0.3788

92.9056, 0.2975,
0.3248

42.2831, 0.4361,
0.3889

95.5676, 0.2976,
0.3290

■ 37.5913, 0.4670,
0.3968

■ 33.4896, 0.4982,
0.4011

■ 29.9496, 0.5277,
0.4005

■ 26.9390, 0.5529,
0.3945

■ 25.4522, 0.5653,
0.3893

Harmonies

Analogous

The Analogous color harmony consists of three colors that are next to each other on the color wheel.



67.4427, 0.3366, 0.3346



67.4427, 0.3371, 0.3444



67.4427, 0.3309, 0.3504

Triad

The Triadic color harmony groups three colors that are evenly spaced from another and form a triangle on the color wheel.



67.4427, 0.3371, 0.3444



67.4427, 0.2961, 0.3343



67.4427, 0.3052, 0.3085

Complementary

The Complementary color scheme is a pair of colors which are on the opposite of each other on the color wheel.



67.4427, 0.3371, 0.3444



66.7241, 0.2904, 0.3131

Split Complementary

Split-complementary colors differ from the complementary color scheme. The scheme consists of three colors, the original color and two neighbors of the complement color.



67.4427, 0.2946, 0.3080



67.4427, 0.3371, 0.3444



67.4427, 0.2894, 0.3227

Square

The Square scheme is like the rectangle color scheme, but the four colors are evenly spaced on the color wheel.



67.4427, 0.3371, 0.3444



67.4427, 0.3072, 0.3446



67.4427, 0.2889, 0.3131



67.4427, 0.3180, 0.3141

Rectangle

The Rectangle color scheme consists of four colors that form a rectangle on the color wheel.



67.4427, 0.3371, 0.3444



67.4427, 0.3240, 0.3512



67.4427, 0.2889, 0.3131



67.4427, 0.3012, 0.3077

Sweetspot

The Sweet Spot groups the original color and five complimentary colors.



67.4457, 0.3371, 0.3444



95.6655, 0.3190, 0.3332



61.7396, 0.3245, 0.3080



20.3054, 0.3203, 0.3340



0.0000, 0.0000, 0.0000



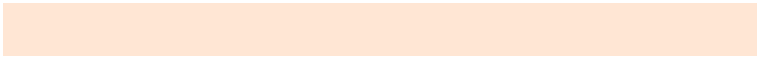
21.4041, 0.3127, 0.3290

Same Dimension

The Same Dimension uses a secret algorithm to generate beautiful new colors.



67.4457, 0.3371, 0.3444



82.5932, 0.3424, 0.3475



75.9492, 0.3346, 0.3617



15.3662, 0.3282, 0.3390



14.6363, 0.5626, 0.3915



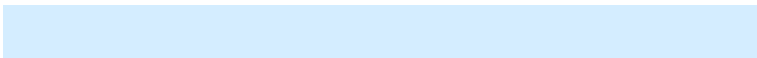
1.2623, 0.5368, 0.4120

Inverse Universe

The Inverse Universe completely reimagines the original color for something new.



66.7241, 0.2904, 0.3131



81.5271, 0.2860, 0.3098



58.7882, 0.2898, 0.2941



15.2602, 0.2981, 0.3188



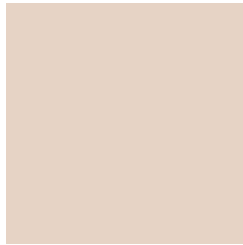
12.9177, 0.1846, 0.1844



1.1377, 0.1910, 0.2076

Previews

White Background



This preview shows how the Yxy color 67.4427, 0.3371, 0.3444 looks on a white background.

Color Contrast Check

Large Text (above 18pt) WCAG AA × Fail

Any Text WCAG AA × Fail

Large Text (above 18pt) WCAG AAA × Fail

Any Text WCAG AAA × Fail

Black Background



This preview shows how the Yxy color 67.4427, 0.3371, 0.3444 looks on a black background.

Color Contrast Check

Large Text (above 18pt) WCAG AA ✓ Pass

Any Text WCAG AA ✓ Pass

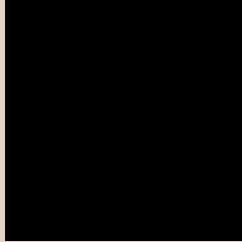
Large Text (above 18pt) WCAG AAA ✓ Pass

Any Text WCAG AAA ✓ Pass

If you want to check with other color combinations, try the [Color Contrast Checker](#).

Yxy 67.4427, 0.3371, 0.3444

Background



This preview shows how black text looks on a background with the Yxy color 67.4427, 0.3371, 0.3444.



This preview shows how white text looks on a background with the Yxy color 67.4427, 0.3371, 0.3444.

Color Blindness Simulation

Color vision deficiency is a very complex topic, and I could not describe the different causes any better than Wikipedia does, so if you want to learn more, you should check out their [article about color blindness](#).

Dichromacy



Original Color

67.4427, 0.3371, 0.3444

Protanopia

67.6999, 0.3298, 0.3469

Deuteranopia

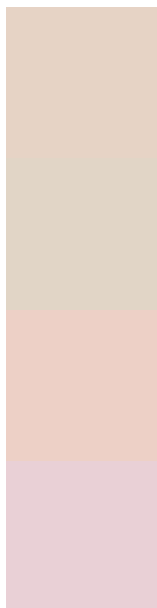
67.4036, 0.3456, 0.3387



Tritanopia

67.4458, 0.3218, 0.3120

Trichromacy



Original Color

67.4427, 0.3371, 0.3444

Protanomaly

67.6733, 0.3322, 0.3457

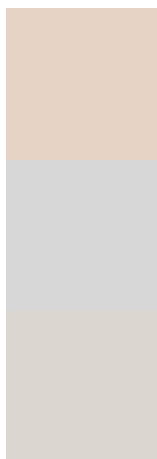
Deuteranomaly

67.1935, 0.3423, 0.3399

Tritanomaly

67.2904, 0.3274, 0.3226

Monochromacy



Original Color

67.4427, 0.3371, 0.3444

Achromatopsia

67.9542, 0.3127, 0.3290

Achromatomaly

67.8628, 0.3213, 0.3357

CSS Examples

Text

The CSS property to change the color of the text to Yxy 67.4427, 0.3371, 0.3444 is called "color". The color property can be set on classes, ids or directly on the HTML element.

This example shows how text in the color `rgb(230, 211, 197)` looks like.

```
.text, #text, p{  
    color:rgb(230, 211, 197)  
}
```

If you want to add a text shadow in that color use the text-shadow property, you can generate a text shadow directly with our [CSS Text Shadow Generator](#).

Here you see how black text with a 4 pixel rgb(230, 211, 197) colored shadow looks like.

```
.shadow{ text-shadow: 4px 4px 2px rgb(230, 211, 197) }
```

Border

The CSS property to change the border of an element to Yxy 67.4427, 0.3371, 0.3444 is called "border". The border property can be set on classes, ids or directly on the HTML element.

This example shows the color as border, it can be applied via the CSS property "border" or "border-color".

```
.border, #border, table{ border:4px solid rgb(230, 211, 197) }
```

If only the border color should be changed use the property border-color.

```
.border{ border-color:rgb(230, 211, 197) }
```

If you want to add a box shadow in that color use:

Here you see how a box with a 4 pixel rgb(230, 211, 197) colored shadow looks like.

```
.boxshadow{ -moz-box-shadow:4px 4px 4px  
4px rgb(230, 211, 197); -webkit-box-  
shadow:4px 4px 4px 4px rgb(230, 211, 197);  
box-shadow:4px 4px 4px 4px rgb(230, 211,  
197) }
```


Background

The CSS property to change the background color of an element to Yxy 67.4427, 0.3371, 0.3444 is called "background". The background property can be set on classes, ids or directly on the HTML element.

```
.background, #background, body{  
background: rgb(230, 211, 197) }
```

If only the background color should be changed can be used:

```
.background{ background-color: rgb(230,  
211, 197) }
```

This example shows the color as background, it is applied via the CSS property "background".

To optimize and compress your CSS code, you can use our [online CSS compressor and optimizer](#) based on csstidy. If you want to create a linear or radial gradient as background or border, check our [CSS Gradient Generator](#).

Hey! You found this booklet interesting? Support Converting Colors with the new Membership Option!

The pro membership hides all ads, plus gives you double the colors in the color bucket, and more awesome pro features!

[Learn more, Memberships starting at \\$2.50/m!](#)

**Follow me
on Twitter!**

@ConvertingColor