

Converting Colors

$Y_{xy}(67.5025, 0.3318, 0.3344)$

Have a look what the booklet for
Yxy(67.5025, 0.3318, 0.3344)
contains.

Yxy(67.4899, 0.3322, 0.3345)	3
Conversions	4
Details	6
Harmonies	12
Previews	24
Color Blindness Simulation	27
CSS Examples	30

Color

Yxy(67.4899, 0.3322, 0.3345)

Conversions

Conversions Part 1

Format	Color
Hex	E7D2CD
RGB	231, 210, 205
RGB Percent	91%, 82%, 80%
CMY	0.0940, 0.1765, 0.1961
CMYK	0.00, 0.09, 0.11, 0.09
HSL	12°, 35%, 85%
HSV	12°, 11%, 91%
XYZ	67.0258, 67.4899, 67.2478
YIQ	215.7090, 14.1210, 2.8970

Conversions

Conversions Part 2

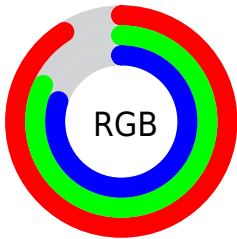
Format	Color
R_{YB}	231, 211, 205
Decimal	15192781
CIE _{Lab}	85.75, 6.46, 5.11
CIE _{LCh}	86, 8.241, 38.328
Yxy	67.4899, 0.3322, 0.3345
Android (android.graphics.Color)	4293382861 (0xFFE7D2CD)
YUV	215.7090, -5.2795, 13.4102
Hunter-Lab	82.1522, 1.8670, 8.9732

Details

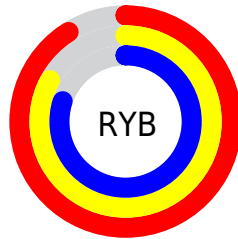
The Yxy color **67.4899, 0.3322, 0.3345** is a light color, and the websafe version is hex **CCCCCC**. A complement of this color would be **73.1530, 0.2954, 0.3234**, and the grayscale version is **68.4936, 0.3127, 0.3290**.

A 20% lighter version of the original color is **100.0000, 0.3127, 0.3290**, and **35.1253, 0.3364, 0.3362** is the 20% darker color. If you saturate the color by 10%, you get **57.7747, 0.3534, 0.3397**, and if you desaturate by 10%, it is **78.4503, 0.3147, 0.3296**.

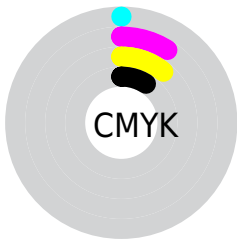
Distribution



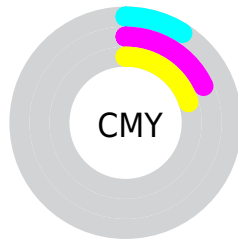
- Red (91%)
- Green (82%)
- Blue (80%)



- Red (91%)
- Yellow (83%)
- Blue (80%)



- Cyan (0%)
- Magenta (9%)
- Yellow (11%)
- Black (9%)





- Cyan (9%)
- Magenta (18%)
- Yellow (20%)

Brightness & Saturation Gradients


These gradients show how the Yxy color 67.4899, 0.3322, 0.3345 changes by changing the brightness by 10 percent. The first figure shows a shift by +10% for each color and the second figure -10%.

Similar to the brightness gradients but the following saturation gradients show a change of the Yxy color 67.4899, 0.3322, 0.3345 by changing the saturation by 10% instead.


 67.4899, 0.3322,
0.3345

 67.4899, 0.3322,
0.3345


451.6866, 0.3230,
0.3320

 49.4829, 0.3343,
0.3351


115.6221, 0.3290,
0.3336

 35.0027, 0.3370,
0.3358


146.5161, 0.3277,
0.3333

 23.6649, 0.3404,
0.3366

182.4744, 0.3267,
0.3330

 15.0853, 0.3450,
0.3377

223.8817, 0.3257,
0.3328

 8.8792, 0.3513,
0.3392

271.1221, 0.3249,
0.3325

 4.6625, 0.3607,
0.3413

324.5801, 0.3242,

 2.0506, 0.3760,

0.3323

0.3445

384.6401, 0.3236,
0.3322

0.6366, 0.4396,
0.3668

0.0000, 0.0000,
0.0000

67.4899, 0.3322,
0.3345

67.4899, 0.3322,
0.3345

57.7747, 0.3534,
0.3397

78.4503, 0.3147,
0.3296

49.2517, 0.3790,
0.3451

90.6888, 0.3003,
0.3251

41.8775, 0.4096,
0.3504

95.7328, 0.2982,
0.3290

35.6024, 0.4452,
0.3551

■ 30.3731, 0.4852,
0.3584

■ 26.1317, 0.5272,
0.3595

■ 22.8146, 0.5674,
0.3573

■ 20.3503, 0.6005,
0.3517

■ 18.8249, 0.6210,
0.3451

Harmonies

Analogous

The Analogous color harmony consists of three colors that are next to each other on the color wheel.



67.4899, 0.3271, 0.3256



67.4899, 0.3322, 0.3345



67.4899, 0.3320, 0.3421

Triad

The Triadic color harmony groups three colors that are evenly spaced from another and form a triangle on the color wheel.



67.4899, 0.3322, 0.3345



67.4899, 0.3072, 0.3408



67.4899, 0.2989, 0.3119

Complementary

The Complementary color scheme is a pair of colors which are on the opposite of each other on the color wheel.



67.4899, 0.3322, 0.3345



73.1530, 0.2954, 0.3234

Split Complementary

Split-complementary colors differ from the complementary color scheme. The scheme consists of three colors, the original color and two neighbors of the complement color.



67.4899, 0.2938, 0.3156



67.4899, 0.3322, 0.3345



67.4899, 0.2985, 0.3323

Square

The Square scheme is like the rectangle color scheme, but the four colors are evenly spaced on the color wheel.



67.4899, 0.3322, 0.3345



67.4899, 0.3175, 0.3460



67.4899, 0.2936, 0.3230



67.4899, 0.3077, 0.3127

Rectangle

The Rectangle color scheme consists of four colors that form a rectangle on the color wheel.



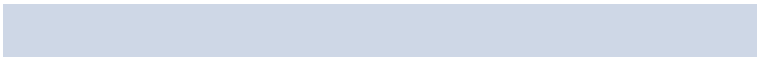
67.4899, 0.3322, 0.3345



67.4899, 0.3289, 0.3455



67.4899, 0.2936, 0.3230



67.4899, 0.2967, 0.3127

Sweetspot

The Sweet Spot groups the original color and five complimentary colors.



67.4929, 0.3322, 0.3345



95.6375, 0.3175, 0.3304



66.1580, 0.3174, 0.3063



20.2261, 0.3189, 0.3308



0.0000, 0.0000, 0.0000



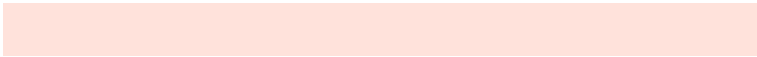
21.4041, 0.3127, 0.3290

Same Dimension

The Same Dimension uses a secret algorithm to generate beautiful new colors.



67.4929, 0.3322, 0.3345



80.8715, 0.3378, 0.3359



74.0589, 0.3305, 0.3482



14.8141, 0.3288, 0.3336



10.6863, 0.6187, 0.3469



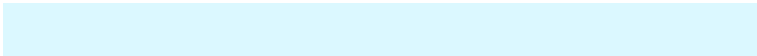
0.9166, 0.5916, 0.3685

Inverse Universe

The Inverse Universe completely reimagines the original color for something new.



73.1530, 0.2954, 0.3234



89.5460, 0.2911, 0.3220



66.4574, 0.2951, 0.3091



15.8407, 0.2981, 0.3244



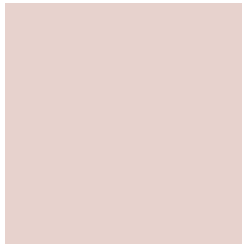
23.2377, 0.2073, 0.2664



1.8385, 0.2102, 0.2765

Previews

White Background



This preview shows how the Yxy color 67.4899, 0.3322, 0.3345 looks on a white background.

Color Contrast Check

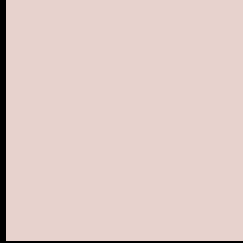
Large Text (above 18pt) WCAG AA × Fail

Any Text WCAG AA × Fail

Large Text (above 18pt) WCAG AAA × Fail

Any Text WCAG AAA × Fail

Black Background



This preview shows how the Yxy color 67.4899, 0.3322, 0.3345 looks on a black background.

Color Contrast Check

Large Text (above 18pt) WCAG AA ✓ Pass

Any Text WCAG AA ✓ Pass

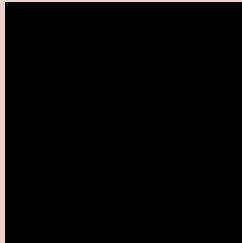
Large Text (above 18pt) WCAG AAA ✓ Pass

Any Text WCAG AAA ✓ Pass

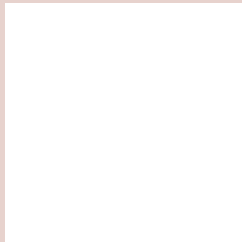
If you want to check with other color combinations, try the [Color Contrast Checker](#).

Yxy 67.4899, 0.3322, 0.3345

Background



This preview shows how black text looks on a background with the Yxy color 67.4899, 0.3322, 0.3345.

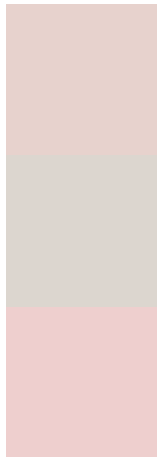


This preview shows how white text looks on a background with the Yxy color 67.4899, 0.3322, 0.3345.

Color Blindness Simulation

Color vision deficiency is a very complex topic, and I could not describe the different causes any better than Wikipedia does, so if you want to learn more, you should check out their [article about color blindness](#).

Dichromacy



Original Color

67.4899, 0.3322, 0.3345

Protanopia

67.8138, 0.3220, 0.3368

Deuteranopia

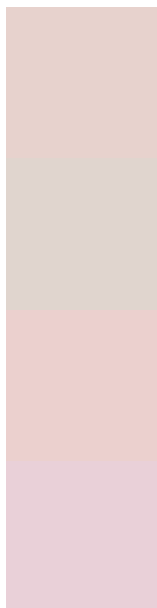
67.2590, 0.3373, 0.3301



Tritanopia

67.4458, 0.3218, 0.3120

Trichromacy



Original Color

67.4899, 0.3322, 0.3345

Protanomaly

67.8920, 0.3258, 0.3368

Deuteranomaly

67.2301, 0.3348, 0.3312

Tritanomaly

67.3933, 0.3260, 0.3204

Monochromacy



Original Color

67.4899, 0.3322, 0.3345

Achromatopsia

68.6685, 0.3127, 0.3290

Achromatomaly

68.2188, 0.3192, 0.3312

CSS Examples

Text

The CSS property to change the color of the text to Yxy 67.4899, 0.3322, 0.3345 is called "color". The color property can be set on classes, ids or directly on the HTML element.

This example shows how text in the color `rgb(231, 210, 205)` looks like.

```
.text, #text, p{  
    color:rgb(231, 210, 205)  
}
```

If you want to add a text shadow in that color use the text-shadow property, you can generate a text shadow directly with our [CSS Text Shadow Generator](#).

Here you see how black text with a 4 pixel rgb(231, 210, 205) colored shadow looks like.

```
.shadow{ text-shadow: 4px 4px 2px rgb(231, 210, 205) }
```

Border

The CSS property to change the border of an element to Yxy 67.4899, 0.3322, 0.3345 is called "border". The border property can be set on classes, ids or directly on the HTML element.

This example shows the color as border, it can be applied via the CSS property "border" or "border-color".

```
.border, #border, table{ border:4px solid rgb(231, 210, 205) }
```

If only the border color should be changed use the property `border-color`.

```
.border{ border-color:rgb(231, 210, 205) }
```

If you want to add a box shadow in that color use:

Here you see how a box with a 4 pixel `rgb(231, 210, 205)` colored shadow looks like.

```
.boxshadow{ -moz-box-shadow:4px 4px 4px 4px rgb(231, 210, 205); -webkit-box-shadow:4px 4px 4px 4px rgb(231, 210, 205); box-shadow:4px 4px 4px 4px rgb(231, 210, 205) }
```


Background

The CSS property to change the background color of an element to Yxy 67.4899, 0.3322, 0.3345 is called "background". The background property can be set on classes, ids or directly on the HTML element.

```
.background, #background, body{  
background: rgb(231, 210, 205) }
```

If only the background color should be changed can be used:

```
.background{ background-color: rgb(231,  
210, 205) }
```

This example shows the color as background, it is applied via the CSS property "background".

To optimize and compress your CSS code, you can use our [online CSS compressor and optimizer](#) based on csstidy. If you want to create a linear or radial gradient as background or border, check our [CSS Gradient Generator](#).

Hey! You found this booklet interesting? Support Converting Colors with the new Membership Option!

The pro membership hides all ads, plus gives you double the colors in the color bucket, and more awesome pro features!

[Learn more, Memberships starting at \\$2.50/m!](#)

**Follow me
on Twitter!**

@ConvertingColor