

# Converting Colors

$Y_{xy}(67.5200, 0.3302, 0.3401)$

Have a look what the booklet for  
Yxy(67.5200, 0.3302, 0.3401)  
contains.

<b>Yxy(67.5200, 0.3302, 0.3401)</b> .....	3
<b>Conversions</b> .....	4
<b>Details</b> .....	6
<b>Harmonies</b> .....	12
<b>Previews</b> .....	24
<b>Color Blindness Simulation</b> .....	27
<b>CSS Examples</b> .....	30

# Color

**Yxy(67.5200, 0.3302, 0.3401)**

# Conversions

## Conversions Part 1

<b>Format</b>	<b>Color</b>
Hex	E2D4CA
RGB	226, 212, 202
RGB Percent	89%, 83%, 79%
CMY	0.1140, 0.1685, 0.2078
CMYK	0.00, 0.06, 0.11, 0.11
HSL	25°, 29%, 84%
HSV	25°, 11%, 89%
XYZ	65.5546, 67.5200, 65.4553
YIQ	215.0460, 11.5540, -0.1420

# Conversions

## Conversions Part 2

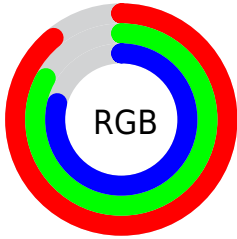
Format	Color
R <sub>Y</sub> B	226, 219, 202
Decimal	14865610
CIE Lab	85.77, 3.12, 6.66
CIE LCh	86, 7.358, 64.917
Yxy	67.5200, 0.3302, 0.3401
Android (android.graphics.Color)	4293055690 (0xFFE2D4CA)
YUV	215.0460, -6.4317, 9.6067
Hunter-Lab	82.1706, -1.3936, 10.2903

# Details

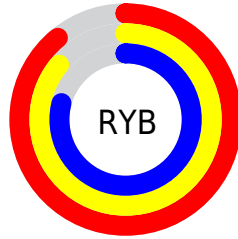
The Yxy color **67.5200, 0.3302, 0.3401** is a light color, and the websafe version is hex **CCCCCC**. A complement of this color would be **67.1155, 0.2963, 0.3176**, and the grayscale version is **68.0236, 0.3127, 0.3290**.

A 20% lighter version of the original color is **100.0000, 0.3127, 0.3290**, and **34.9100, 0.3351, 0.3421** is the 20% darker color. If you saturate the color by 10%, you get **60.2264, 0.3494, 0.3512**, and if you desaturate by 10%, it is **75.5106, 0.3136, 0.3296**.

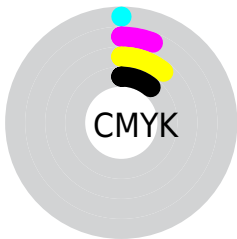
# Distribution



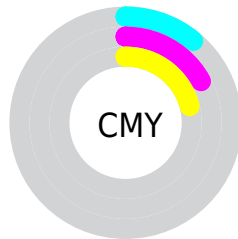
- Red (89%)
- Green (83%)
- Blue (79%)



- Red (89%)
- Yellow (86%)
- Blue (79%)



- Cyan (0%)
- Magenta (6%)
- Yellow (11%)
- Black (11%)




- Cyan (11%)
- Magenta (17%)
- Yellow (21%)


# Brightness & Saturation Gradients

These gradients show how the Yxy color 67.5200, 0.3302, 0.3401 changes by changing the brightness by 10 percent. The first figure shows a shift by +10% for each color and the second figure -10%.

Similar to the brightness gradients but the following saturation gradients show a change of the Yxy color 67.5200, 0.3302, 0.3401 by changing the saturation by 10% instead.




 67.5200, 0.3302,  
0.3401

 67.5200, 0.3302,  
0.3401

451.7935, 0.3220,  
0.3349

 49.5073, 0.3321,  
0.3413


115.6652, 0.3273,  
0.3383

 35.0221, 0.3345,  
0.3428


146.5665, 0.3262,  
0.3376

 23.6799, 0.3376,  
0.3446

182.5329, 0.3252,  
0.3370

 15.0963, 0.3416,  
0.3471

223.9486, 0.3244,  
0.3365

 8.8870, 0.3472,  
0.3504

271.1981, 0.3237,  
0.3360

 4.6676, 0.3556,  
0.3553

324.6659, 0.3231,

 2.0536, 0.3692,

0.3356

0.3630

384.7362, 0.3225,  
0.3353

0.6383, 0.4405,  
0.4117

0.0000, 0.0000,  
0.0000

67.5200, 0.3302,  
0.3401

67.5200, 0.3302,  
0.3401

60.2264, 0.3494,  
0.3512

75.5106, 0.3136,  
0.3296

53.6014, 0.3716,  
0.3627

84.2078, 0.2994,  
0.3198

47.6277, 0.3969,  
0.3741

92.6432, 0.2951,  
0.3254

42.2836, 0.4251,  
0.3846

94.8994, 0.2952,  
0.3289

■ 37.5462, 0.4556,  
0.3934

■ 33.3911, 0.4871,  
0.3991

■ 29.7914, 0.5178,  
0.4004

■ 26.7176, 0.5451,  
0.3964

■ 24.2697, 0.5665,  
0.3884

# Harmonies

## Analogous

The Analogous color harmony consists of three colors that are next to each other on the color wheel.



67.5200, 0.3298, 0.3331



67.5200, 0.3302, 0.3401



67.5200, 0.3258, 0.3443

# Triad

The Triadic color harmony groups three colors that are evenly spaced from another and form a triangle on the color wheel.



67.5200, 0.3302, 0.3401



67.5200, 0.3008, 0.3329



67.5200, 0.3073, 0.3142

# Complementary

The Complementary color scheme is a pair of colors which are on the opposite of each other on the color wheel.



67.5200, 0.3302, 0.3401



67.1155, 0.2963, 0.3176

# Split Complementary

Split-complementary colors differ from the complementary color scheme. The scheme consists of three colors, the original color and two neighbors of the complement color.



67.5200, 0.2996, 0.3139



67.5200, 0.3302, 0.3401



67.5200, 0.2959, 0.3246

# Square

The Square scheme is like the rectangle color scheme, but the four colors are evenly spaced on the color wheel.



67.5200, 0.3302, 0.3401



67.5200, 0.3088, 0.3402



67.5200, 0.2955, 0.3177



67.5200, 0.3165, 0.3182



# Rectangle

The Rectangle color scheme consists of four colors that form a rectangle on the color wheel.



67.5200, 0.3302, 0.3401



67.5200, 0.3209, 0.3449



67.5200, 0.2955, 0.3177



67.5200, 0.3044, 0.3136

# Sweetspot

The Sweet Spot groups the original color and five complimentary colors.



67.5230, 0.3302, 0.3401



96.7122, 0.3174, 0.3321



63.3578, 0.3211, 0.3137



20.5154, 0.3187, 0.3329



0.0000, 0.0000, 0.0000



21.4041, 0.3127, 0.3290

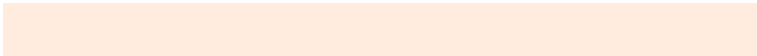


# Same Dimension

The Same Dimension uses a secret algorithm to generate beautiful new colors.



67.5230, 0.3302, 0.3401



86.3602, 0.3347, 0.3428



73.7066, 0.3287, 0.3529



14.6387, 0.3282, 0.3389



14.0765, 0.5638, 0.3906



1.1497, 0.5363, 0.4123

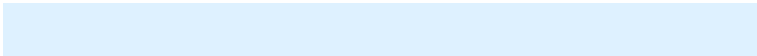


# Inverse Universe

The Inverse Universe completely reimagines the original color for something new.



67.1155, 0.2963, 0.3176



85.7089, 0.2924, 0.3148



61.2293, 0.2962, 0.3039



14.5604, 0.2981, 0.3189



12.6926, 0.1851, 0.1863

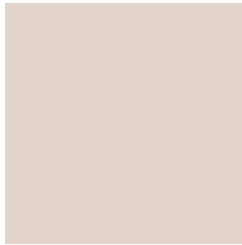


1.0556, 0.1918, 0.2104



# Previews

## White Background



This preview shows how the Yxy color 67.5200, 0.3302, 0.3401 looks on a white background.

## Color Contrast Check

Large Text (above 18pt) WCAG AA × Fail

Any Text WCAG AA × Fail

Large Text (above 18pt) WCAG AAA × Fail

Any Text WCAG AAA × Fail



# Black Background



This preview shows how the Yxy color 67.5200, 0.3302, 0.3401 looks on a black background.

## Color Contrast Check

Large Text (above 18pt) WCAG AA ✓ Pass

Any Text WCAG AA ✓ Pass

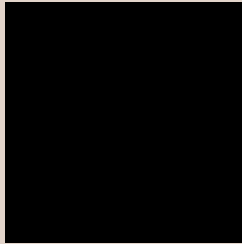
Large Text (above 18pt) WCAG AAA ✓ Pass

Any Text WCAG AAA ✓ Pass

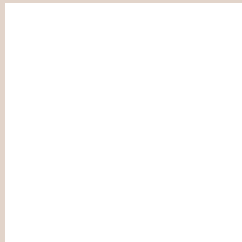
If you want to check with other color combinations, try the [Color Contrast Checker](#).

**Yxy 67.5200, 0.3302, 0.3401**

## Background



This preview shows how black text looks on a background with the Yxy color 67.5200, 0.3302, 0.3401.

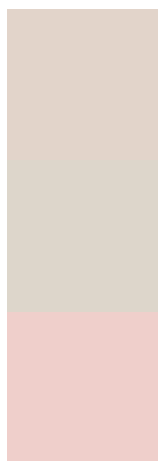


This preview shows how white text looks on a background with the Yxy color 67.5200, 0.3302, 0.3401.

# Color Blindness Simulation

Color vision deficiency is a very complex topic, and I could not describe the different causes any better than Wikipedia does, so if you want to learn more, you should check out their [article about color blindness](#).

## Dichromacy



### Original Color

67.5200, 0.3302, 0.3401

### Protanopia

67.7771, 0.3255, 0.3413

### Deuteranopia

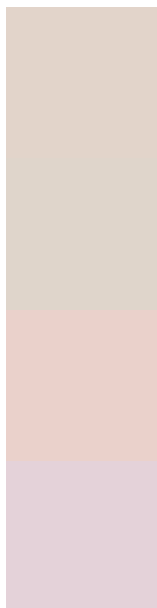
67.2882, 0.3403, 0.3334



## Tritanopia

67.6952, 0.3165, 0.3118

# Trichromacy



## Original Color

67.5200, 0.3302, 0.3401

## Protanomaly

67.5883, 0.3271, 0.3401

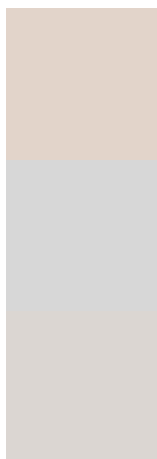
## Deuteranomaly

67.4052, 0.3361, 0.3356

## Tritanomaly

67.5969, 0.3213, 0.3214

# Monochromacy



## Original Color

67.5200, 0.3302, 0.3401

## Achromatopsia

67.9542, 0.3127, 0.3290

## Achromatomaly

67.8063, 0.3191, 0.3335

# CSS Examples

## Text

The CSS property to change the color of the text to Yxy 67.5200, 0.3302, 0.3401 is called "color". The color property can be set on classes, ids or directly on the HTML element.

This example shows how text in the color `rgb(226, 212, 202)` looks like.

```
.text, #text, p{  
    color:rgb(226, 212, 202)  
}
```

If you want to add a text shadow in that color use the text-shadow property, you can generate a text shadow directly with our [CSS Text Shadow Generator](#).

Here you see how black text with a 4 pixel rgb(226, 212, 202) colored shadow looks like.

```
.shadow{ text-shadow: 4px 4px 2px rgb(226, 212, 202) }
```

## Border

The CSS property to change the border of an element to Yxy 67.5200, 0.3302, 0.3401 is called "border". The border property can be set on classes, ids or directly on the HTML element.

This example shows the color as border, it can be applied via the CSS property "border" or "border-color".

```
.border, #border, table{ border:4px solid rgb(226, 212, 202) }
```

If only the border color should be changed use the property `border-color`.

```
.border{ border-color:rgb(226, 212, 202) }
```

If you want to add a box shadow in that color use:

Here you see how a box with a 4 pixel `rgb(226, 212, 202)` colored shadow looks like.

```
.boxshadow{ -moz-box-shadow:4px 4px 4px  
4px rgb(226, 212, 202); -webkit-box-  
shadow:4px 4px 4px 4px rgb(226, 212, 202);  
box-shadow:4px 4px 4px 4px rgb(226, 212,  
202) }
```



# Background

The CSS property to change the background color of an element to Yxy 67.5200, 0.3302, 0.3401 is called "background". The background property can be set on classes, ids or directly on the HTML element.

```
.background, #background, body{  
background: rgb(226, 212, 202) }
```

If only the background color should be changed can be used:

```
.background{ background-color: rgb(226,  
212, 202) }
```

This example shows the color as background, it is applied via the CSS property "background".

To optimize and compress your CSS code, you can use our [online CSS compressor and optimizer](#) based on csstidy. If you want to create a linear or radial gradient as background or border, check our [CSS Gradient Generator](#).

Hey! You found this booklet interesting? Support Converting Colors with the new Membership Option!

The pro membership hides all ads, plus gives you double the colors in the color bucket, and more awesome pro features!

**[Learn more, Memberships starting at \\$2.50/m!](#)**

**Follow me  
on Twitter!**

@ConvertingColor