

Converting Colors

Yxy(67.6387, 0.3255, 0.3219)

Have a look what the booklet for
Yxy(67.6387, 0.3255, 0.3219)
contains.

Yxy(67.7146, 0.3251, 0.3215)	3
<i>Conversions</i>	4
<i>Details</i>	6
<i>Harmonies</i>	12
<i>Previews</i>	24
<i>Color Blindness Simulation</i>	27
<i>CSS Examples</i>	30

Color

Yxy(67.7146, 0.3251, 0.3215)

Conversions

Conversions Part 1

Format	Color
Hex	E8D1D8
RGB	232, 209, 216
RGB Percent	91%, 82%, 85%
CMY	0.0902, 0.1804, 0.1529
CMYK	0.00, 0.10, 0.07, 0.09
HSL	342°, 33%, 86%
HSV	342°, 10%, 91%
XYZ	68.4728, 67.7146, 74.4334
YIQ	216.6750, 11.4610, 7.0530

Conversions

Conversions Part 2

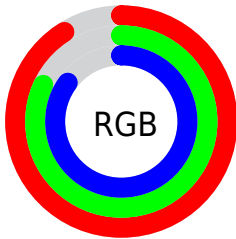
Format	Color
R _Y B	232, 209, 216
Decimal	15258072
CIE Lab	85.86, 9.16, -0.56
CIE LCh	86, 9.176, 356.520
Yxy	67.7146, 0.3251, 0.3215
Android (android.graphics.Color)	4293448152 (0xFFE8D1D8)
YUV	216.6750, -0.3328, 13.4400
Hunter-Lab	82.2889, 4.5249, 3.9722

Details

The Yxy color **67.7146, 0.3251, 0.3215** is a light color, and the websafe version is hex **CCCCCC**. A complement of this color would be **76.7013, 0.3017, 0.3366**, and the grayscale version is **69.1520, 0.3127, 0.3290**.

A 20% lighter version of the original color is **100.0000, 0.3127, 0.3290**, and **35.2460, 0.3280, 0.3206** is the 20% darker color. If you saturate the color by 10%, you get **56.3561, 0.3404, 0.3135**, and if you desaturate by 10%, it is **80.8185, 0.3126, 0.3291**.

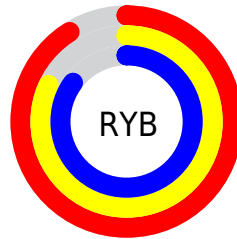
Distribution



Red (91%)

Green (82%)

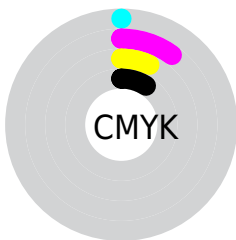
Blue (85%)



Red (91%)

Yellow (82%)

Blue (85%)

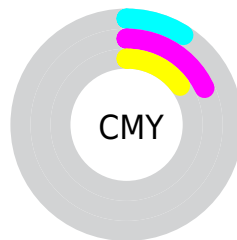


Cyan (0%)

Magenta (10%)

Yellow (7%)

Black (9%)



Cyan (9%)

Magenta (18%)

Yellow (15%)

Brightness & Saturation Gradients

These gradients show how the Yxy color 67.7146, 0.3251, 0.3215 changes by changing the brightness by 10 percent. The first figure shows a shift by +10% for each color and the second figure -10%.

Similar to the brightness gradients but the following saturation gradients show a change of the Yxy color 67.7146, 0.3251, 0.3215 by changing the saturation by 10% instead.

67.7146, 0.3251,
0.3215

67.7146, 0.3251,
0.3215

452.4842, 0.3193,
0.3250

49.6656, 0.3264,
0.3207

115.9438, 0.3231,
0.3227

35.1478, 0.3281,
0.3197

146.8927, 0.3223,
0.3232

23.7767, 0.3303,
0.3184

182.9104, 0.3216,
0.3236

15.1681, 0.3331,
0.3167

224.3813, 0.3210,
0.3240

8.9374, 0.3370,
0.3143

271.6897, 0.3205,
0.3243

4.7004, 0.3428,
0.3109

325.2200, 0.3201,

2.0726, 0.3521,

0.3246

0.3053

385.3567, 0.3197,
0.3248

0.6491, 0.3760,
0.2904

0.0000, 0.0000,
0.0000

67.7146, 0.3251,
0.3215

67.7146, 0.3251,
0.3215

56.3561, 0.3404,
0.3135

80.8185, 0.3126,
0.3291

46.6605, 0.3592,
0.3051

95.4689, 0.3025,
0.3357

38.5516, 0.3820,
0.2969

95.8946, 0.2987,
0.3290

31.9442, 0.4092,
0.2894

■ 26.7446, 0.4408,
0.2834

■ 22.8488, 0.4758,
0.2802

■ 20.1380, 0.5124,
0.2810

■ 18.4715, 0.5475,
0.2864

■ 17.6121, 0.5779,
0.2958

Harmonies

Analogous

The Analogous color harmony consists of three colors that are next to each other on the color wheel.



67.7146, 0.3141, 0.3138



67.7146, 0.3251, 0.3215



67.7146, 0.3328, 0.3312

Triad

The Triadic color harmony groups three colors that are evenly spaced from another and form a triangle on the color wheel.



67.7146, 0.3251, 0.3215



67.7146, 0.3223, 0.3488



67.7146, 0.2909, 0.3169

Complementary

The Complementary color scheme is a pair of colors which are on the opposite of each other on the color wheel.



67.7146, 0.3251, 0.3215



76.7013, 0.3017, 0.3366

Split Complementary

Split-complementary colors differ from the complementary color scheme. The scheme consists of three colors, the original color and two neighbors of the complement color.



67.7146, 0.2930, 0.3263



67.7146, 0.3251, 0.3215



67.7146, 0.3110, 0.3449

Square

The Square scheme is like the rectangle color scheme, but the four colors are evenly spaced on the color wheel.



67.7146, 0.3251, 0.3215



67.7146, 0.3311, 0.3471



67.7146, 0.3003, 0.3366



67.7146, 0.2945, 0.3110

Rectangle

The Rectangle color scheme consists of four colors that form a rectangle on the color wheel.



67.7146, 0.3251, 0.3215



67.7146, 0.3350, 0.3376



67.7146, 0.3003, 0.3366



67.7146, 0.2910, 0.3197

Sweetspot

The Sweet Spot groups the original color and five complimentary colors.



67.7176, 0.3251, 0.3215



94.8779, 0.3162, 0.3268



67.3920, 0.3085, 0.3043



20.0221, 0.3172, 0.3262



0.0000, 0.0000, 0.0000



21.4041, 0.3127, 0.3290

Same Dimension

The Same Dimension uses a secret algorithm to generate beautiful new colors.



67.7176, 0.3251, 0.3215



80.7112, 0.3281, 0.3198



69.4584, 0.3296, 0.3336



14.4399, 0.3245, 0.3219



9.7942, 0.5740, 0.2936



0.7399, 0.5324, 0.2706

Inverse Universe

The Inverse Universe completely reimagines the original color for something new.



67.7176, 0.3251, 0.3215



80.7112, 0.3281, 0.3198



74.7474, 0.2974, 0.3244



14.4399, 0.3245, 0.3219



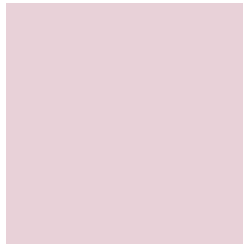
9.7942, 0.5740, 0.2936



0.7399, 0.5324, 0.2706

Previews

White Background



This preview shows how the Yxy color 67.7146, 0.3251, 0.3215 looks on a white background.

Color Contrast Check

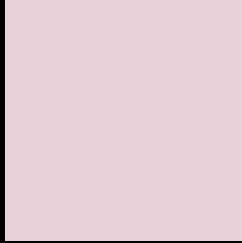
Large Text (above 18pt) WCAG AA × Fail

Any Text WCAG AA × Fail

Large Text (above 18pt) WCAG AAA × Fail

Any Text WCAG AAA × Fail

Black Background



This preview shows how the Yxy color 67.7146, 0.3251, 0.3215 looks on a black background.

Color Contrast Check

Large Text (above 18pt) WCAG AA ✓ Pass

Any Text WCAG AA ✓ Pass

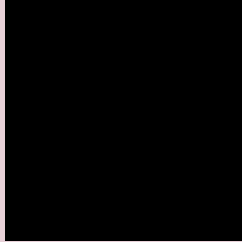
Large Text (above 18pt) WCAG AAA ✓ Pass

Any Text WCAG AAA ✓ Pass

If you want to check with other color combinations, try the [Color Contrast Checker](#).

Yxy 67.7146, 0.3251, 0.3215

Background



This preview shows how black text looks on a background with the Yxy color 67.7146, 0.3251, 0.3215.



This preview shows how white text looks on a background with the Yxy color 67.7146, 0.3251, 0.3215.

Color Blindness Simulation

Color vision deficiency is a very complex topic, and I could not describe the different causes any better than Wikipedia does, so if you want to learn more, you should check out their [article about color blindness](#).

Dichromacy



Original Color

67.7146, 0.3251, 0.3215

Protanopia

67.9593, 0.3115, 0.3235

Deuteranopia

67.7318, 0.3275, 0.3205



Tritanopia

67.8172, 0.3203, 0.3120

Trichromacy



Original Color

67.7146, 0.3251, 0.3215

Protanomaly

67.6785, 0.3160, 0.3224

Deuteranomaly

67.5620, 0.3267, 0.3205

Tritanomaly

67.6558, 0.3224, 0.3151

Monochromacy



Original Color

67.7146, 0.3251, 0.3215

Achromatopsia

69.3872, 0.3127, 0.3290

Achromatomaly

68.6325, 0.3165, 0.3257

CSS Examples

Text

The CSS property to change the color of the text to Yxy 67.7146, 0.3251, 0.3215 is called "color". The color property can be set on classes, ids or directly on the HTML element.

This example shows how text in the color `rgb(232, 209, 216)` looks like.

```
.text, #text, p{  
    color:rgb(232, 209, 216)  
}
```

If you want to add a text shadow in that color use the text-shadow property, you can generate a text shadow directly with our [CSS Text Shadow Generator](#).

Here you see how black text with a 4 pixel rgb(232, 209, 216) colored shadow looks like.

```
.shadow{ text-shadow: 4px 4px 2px rgb(232, 209, 216) }
```

Border

The CSS property to change the border of an element to Yxy 67.7146, 0.3251, 0.3215 is called "border". The border property can be set on classes, ids or directly on the HTML element.

This example shows the color as border, it can be applied via the CSS property "border" or "border-color".

```
.border, #border, table{ border:4px solid rgb(232, 209, 216) }
```

If only the border color should be changed use the property `border-color`.

```
.border{ border-color:rgb(232, 209, 216) }
```

If you want to add a box shadow in that color use:

Here you see how a box with a 4 pixel `rgb(232, 209, 216)` colored shadow looks like.

```
.boxshadow{ -moz-box-shadow:4px 4px 4px  
4px rgb(232, 209, 216); -webkit-box-  
shadow:4px 4px 4px 4px rgb(232, 209, 216);  
box-shadow:4px 4px 4px 4px rgb(232, 209,  
216) }
```


Background

The CSS property to change the background color of an element to Yxy 67.7146, 0.3251, 0.3215 is called "background". The background property can be set on classes, ids or directly on the HTML element.

```
.background, #background, body{  
background: rgb(232, 209, 216) }
```

If only the background color should be changed can be used:

```
.background{ background-color: rgb(232,  
209, 216) }
```

This example shows the color as background, it is applied via the CSS property "background".

To optimize and compress your CSS code, you can use our [online CSS compressor and optimizer](#) based on csstidy. If you want to create a linear or radial gradient as background or border, check our [CSS Gradient Generator](#).

Hey! You found this booklet interesting? Support Converting Colors with the new Membership Option!

The pro membership hides all ads, plus gives you double the colors in the color bucket, and more awesome pro features!

[Learn more, Memberships starting at \\$2.50/m!](#)

**Follow me
on Twitter!**

@ConvertingColor