

Converting Colors

Yxy(67.7134, 0.3334, 0.3359)

Have a look what the booklet for
Yxy(67.7134, 0.3334, 0.3359)
contains.

Yxy(67.6086, 0.3337, 0.3356)	3
<i>Conversions</i>	4
<i>Details</i>	6
<i>Harmonies</i>	12
<i>Previews</i>	24
<i>Color Blindness Simulation</i>	27
<i>CSS Examples</i>	30

Color

Yxy(67.6086, 0.3337, 0.3356)

Conversions

Conversions Part 1

Format	Color
Hex	E8D2CC
RGB	232, 210, 204
RGB Percent	91%, 82%, 80%
CMY	0.0901, 0.1765, 0.2001
CMYK	0.00, 0.09, 0.12, 0.09
HSL	13°, 38%, 85%
HSV	13°, 12%, 91%
XYZ	67.2258, 67.6086, 66.6215
YIQ	215.8940, 15.0380, 2.7980

Conversions

Conversions Part 2

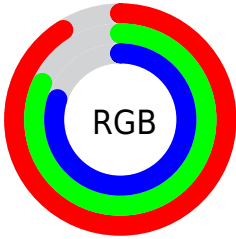
Format	Color
R _Y B	232, 212, 204
Decimal	15258316
CIE Lab	85.81, 6.65, 5.74
CIE LCh	86, 8.787, 40.819
Yxy	67.6086, 0.3337, 0.3356
Android (android.graphics.Color)	4293448396 (0xFFE8D2CC)
YUV	215.8940, -5.8637, 14.1250
Hunter-Lab	82.2244, 2.0469, 9.5180

Details

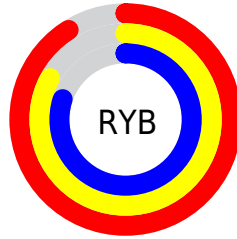
The Yxy color **67.6086, 0.3337, 0.3356** is a light color, and the websafe version is hex **CCCCCC**. A complement of this color would be **73.0516, 0.2941, 0.3223**, and the grayscale version is **68.6285, 0.3127, 0.3290**.

A 20% lighter version of the original color is **100.0000, 0.3127, 0.3290**, and **35.2090, 0.3384, 0.3376** is the 20% darker color. If you saturate the color by 10%, you get **58.0900, 0.3551, 0.3415**, and if you desaturate by 10%, it is **78.3232, 0.3160, 0.3301**.

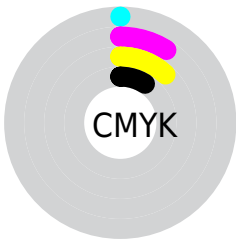
Distribution



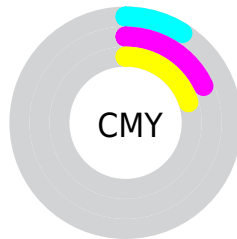
- Red (91%)
- Green (82%)
- Blue (80%)



- Red (91%)
- Yellow (83%)
- Blue (80%)



- Cyan (0%)
- Magenta (9%)
- Yellow (12%)
- Black (9%)




- Cyan (9%)
- Magenta (18%)
- Yellow (20%)

Brightness & Saturation Gradients

These gradients show how the Yxy color 67.6086, 0.3337, 0.3356 changes by changing the brightness by 10 percent. The first figure shows a shift by +10% for each color and the second figure -10%.

Similar to the brightness gradients but the following saturation gradients show a change of the Yxy color 67.6086, 0.3337, 0.3356 by changing the saturation by 10% instead.


 67.6086, 0.3337,
0.3356

 67.6086, 0.3337,
0.3356


452.1080, 0.3238,
0.3326

 49.5794, 0.3360,
0.3363


115.7920, 0.3302,
0.3346

 35.0793, 0.3389,
0.3371


146.7150, 0.3289,
0.3342

 23.7240, 0.3426,
0.3382


182.7048, 0.3277,
0.3338

 15.1290, 0.3475,
0.3395

224.1456, 0.3268,
0.3335

 8.9100, 0.3543,
0.3413

271.4220, 0.3259,
0.3332

 4.6825, 0.3643,
0.3438

324.9182, 0.3251,

 2.0622, 0.3808,

0.3330

0.3476

385.0188, 0.3244,
0.3328

0.6432, 0.4510,
0.3749

0.0000, 0.0000,
0.0000

67.6086, 0.3337,
0.3356

67.6086, 0.3337,
0.3356

58.0900, 0.3551,
0.3415

78.3232, 0.3160,
0.3301

49.7168, 0.3807,
0.3475

90.2642, 0.3013,
0.3250

42.4483, 0.4112,
0.3534

95.8982, 0.2988,
0.3290

36.2376, 0.4465,
0.3585

■ 31.0345, 0.4858,
0.3622

■ 26.7847, 0.5270,
0.3633

■ 23.4284, 0.5661,
0.3609

■ 20.8985, 0.5983,
0.3548

■ 19.4247, 0.6170,
0.3483

Harmonies

Analogous

The Analogous color harmony consists of three colors that are next to each other on the color wheel.



67.6086, 0.3286, 0.3261



67.6086, 0.3337, 0.3356



67.6086, 0.3330, 0.3435

Triad

The Triadic color harmony groups three colors that are evenly spaced from another and form a triangle on the color wheel.



67.6086, 0.3337, 0.3356



67.6086, 0.3060, 0.3409



67.6086, 0.2986, 0.3107

Complementary

The Complementary color scheme is a pair of colors which are on the opposite of each other on the color wheel.



67.6086, 0.3337, 0.3356



73.0516, 0.2941, 0.3223

Split Complementary

Split-complementary colors differ from the complementary color scheme. The scheme consists of three colors, the original color and two neighbors of the complement color.



67.6086, 0.2928, 0.3142



67.6086, 0.3337, 0.3356



67.6086, 0.2970, 0.3316

Square

The Square scheme is like the rectangle color scheme, but the four colors are evenly spaced on the color wheel.



67.6086, 0.3337, 0.3356



67.6086, 0.3169, 0.3468



67.6086, 0.2922, 0.3218



67.6086, 0.3083, 0.3120

Rectangle

The Rectangle color scheme consists of four colors that form a rectangle on the color wheel.



67.6086, 0.3337, 0.3356



67.6086, 0.3294, 0.3469



67.6086, 0.2922, 0.3218



67.6086, 0.2962, 0.3113

Sweetspot

The Sweet Spot groups the original color and five complimentary colors.



67.6116, 0.3337, 0.3356



94.3561, 0.3192, 0.3311



65.8491, 0.3181, 0.3051



19.9748, 0.3204, 0.3315



0.0000, 0.0000, 0.0000



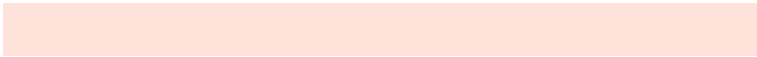
21.4041, 0.3127, 0.3290

Same Dimension

The Same Dimension uses a secret algorithm to generate beautiful new colors.



67.6116, 0.3337, 0.3356



81.3104, 0.3376, 0.3367



74.6162, 0.3319, 0.3501



14.8671, 0.3287, 0.3341



10.9320, 0.6145, 0.3503



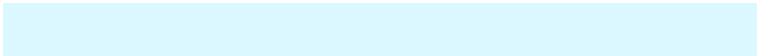
0.9421, 0.5867, 0.3724

Inverse Universe

The Inverse Universe completely reimagines the original color for something new.



73.0516, 0.2941, 0.3223



89.0521, 0.2911, 0.3211



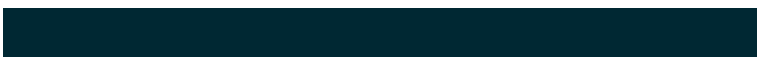
65.9452, 0.2938, 0.3070



15.7834, 0.2981, 0.3238



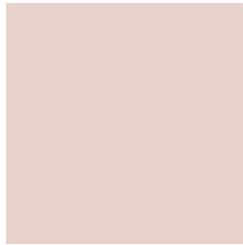
22.0390, 0.2052, 0.2585



1.7598, 0.2083, 0.2700

Previews

White Background



This preview shows how the Yxy color 67.6086, 0.3337, 0.3356 looks on a white background.

Color Contrast Check

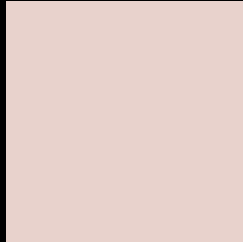
Large Text (above 18pt) WCAG AA × Fail

Any Text WCAG AA × Fail

Large Text (above 18pt) WCAG AAA × Fail

Any Text WCAG AAA × Fail

Black Background



This preview shows how the Yxy color 67.6086, 0.3337, 0.3356 looks on a black background.

Color Contrast Check

Large Text (above 18pt) WCAG AA ✓ Pass

Any Text WCAG AA ✓ Pass

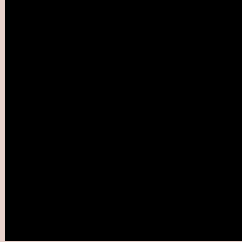
Large Text (above 18pt) WCAG AAA ✓ Pass

Any Text WCAG AAA ✓ Pass

If you want to check with other color combinations, try the [Color Contrast Checker](#).

Yxy 67.6086, 0.3337, 0.3356

Background



This preview shows how black text looks on a background with the Yxy color 67.6086, 0.3337, 0.3356.

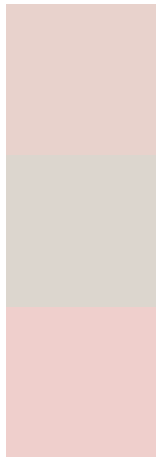


This preview shows how white text looks on a background with the Yxy color 67.6086, 0.3337, 0.3356.

Color Blindness Simulation

Color vision deficiency is a very complex topic, and I could not describe the different causes any better than Wikipedia does, so if you want to learn more, you should check out their [article about color blindness](#).

Dichromacy



Original Color

67.6086, 0.3337, 0.3356

Protanopia

67.7650, 0.3227, 0.3379

Deuteranopia

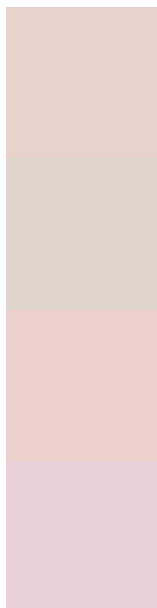
67.3360, 0.3396, 0.3323



Tritanopia

67.6155, 0.3226, 0.3120

Trichromacy



Original Color

67.6086, 0.3337, 0.3356

Protanomaly

67.8436, 0.3265, 0.3379

Deuteranomaly

67.3043, 0.3371, 0.3334

Tritanomaly

67.5620, 0.3267, 0.3205

Monochromacy



Original Color

67.6086, 0.3337, 0.3356

Achromatopsia

68.6685, 0.3127, 0.3290

Achromatomaly

68.3762, 0.3200, 0.3312

CSS Examples

Text

The CSS property to change the color of the text to Yxy 67.6086, 0.3337, 0.3356 is called "color". The color property can be set on classes, ids or directly on the HTML element.

This example shows how text in the color `rgb(232, 210, 204)` looks like.

```
.text, #text, p{  
    color:rgb(232, 210, 204)  
}
```

If you want to add a text shadow in that color use the text-shadow property, you can generate a text shadow directly with our [CSS Text Shadow Generator](#).

Here you see how black text with a 4 pixel rgb(232, 210, 204) colored shadow looks like.

```
.shadow{ text-shadow: 4px 4px 2px rgb(232, 210, 204) }
```

Border

The CSS property to change the border of an element to Yxy 67.6086, 0.3337, 0.3356 is called "border". The border property can be set on classes, ids or directly on the HTML element.

This example shows the color as border, it can be applied via the CSS property "border" or "border-color".

```
.border, #border, table{ border:4px solid rgb(232, 210, 204) }
```

If only the border color should be changed use the property border-color.

```
.border{ border-color:rgb(232, 210, 204) }
```

If you want to add a box shadow in that color use:

Here you see how a box with a 4 pixel rgb(232, 210, 204) colored shadow looks like.

```
.boxshadow{ -moz-box-shadow:4px 4px 4px  
4px rgb(232, 210, 204); -webkit-box-  
shadow:4px 4px 4px 4px rgb(232, 210, 204);  
box-shadow:4px 4px 4px 4px rgb(232, 210,  
204) }
```


Background

The CSS property to change the background color of an element to Yxy 67.6086, 0.3337, 0.3356 is called "background". The background property can be set on classes, ids or directly on the HTML element.

```
.background, #background, body{  
background: rgb(232, 210, 204) }
```

If only the background color should be changed can be used:

```
.background{ background-color: rgb(232,  
210, 204) }
```

This example shows the color as background, it is applied via the CSS property "background".

To optimize and compress your CSS code, you can use our [online CSS compressor and optimizer](#) based on csstidy. If you want to create a linear or radial gradient as background or border, check our [CSS Gradient Generator](#).

Hey! You found this booklet interesting? Support Converting Colors with the new Membership Option!

The pro membership hides all ads, plus gives you double the colors in the color bucket, and more awesome pro features!

[Learn more, Memberships starting at \\$2.50/m!](#)

**Follow me
on Twitter!**

@ConvertingColor