

Converting Colors

$Y_{xy}(67.7741, 0.3253, 0.3272)$

Have a look what the booklet for
Yxy(67.7741, 0.3253, 0.3272)
contains.

Yxy(68.0000, 0.3255, 0.3280)	3
Conversions	4
Details	6
Harmonies	12
Previews	24
Color Blindness Simulation	27
CSS Examples	30

Color

Yxy(68.0000, 0.3255, 0.3280)

Conversions

Conversions Part 1

Format	Color
Hex	E5D3D4
RGB	229, 211, 212
RGB Percent	90%, 83%, 83%
CMY	0.1021, 0.1725, 0.1687
CMYK	0.00, 0.08, 0.07, 0.10
HSL	357°, 26%, 86%
HSV	357°, 8%, 90%
XYZ	67.4817, 68.0000, 71.8354
YIQ	216.4960, 10.4070, 4.1270

Conversions

Conversions Part 2

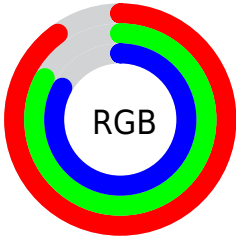
Format	Color
R _Y B	229, 211, 212
Decimal	15061972
CIE Lab	86.01, 6.37, 1.76
CIE LCh	86, 6.609, 15.476
Yxy	68.0000, 0.3255, 0.3280
Android (android.graphics.Color)	4293252052 (0xFFE5D3D4)
YUV	216.4960, -2.2165, 10.9660
Hunter-Lab	82.4621, 1.7643, 6.0741

Details

The Yxy color $68.0000, 0.3255, 0.3280$ is a light color, and the websafe version is hex `CCCCCC`. A complement of this color would be $75.4789, 0.3012, 0.3300$, and the grayscale version is $69.0341, 0.3127, 0.3290$.

A 20% lighter version of the original color is $100.0000, 0.3127, 0.3290$, and $35.0955, 0.3287, 0.3276$ is the 20% darker color. If you saturate the color by 10%, you get $56.4018, 0.3454, 0.3267$, and if you desaturate by 10%, it is $81.3716, 0.3096, 0.3293$.

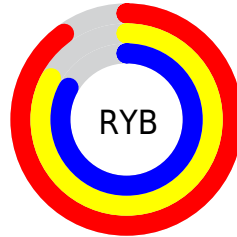
Distribution



Red (90%)

Green (83%)

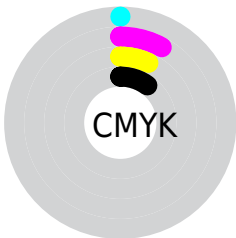
Blue (83%)



Red (90%)

Yellow (83%)

Blue (83%)

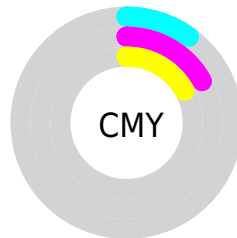


Cyan (0%)

Magenta (8%)

Yellow (7%)

Black (10%)



Cyan (10%)


Magenta (17%)


Yellow (17%)

Brightness & Saturation Gradients

These gradients show how the Yxy color 68.0000, 0.3255, 0.3280 changes by changing the brightness by 10 percent. The first figure shows a shift by +10% for each color and the second figure -10%.

Similar to the brightness gradients but the following saturation gradients show a change of the Yxy color 68.0000, 0.3255, 0.3280 by changing the saturation by 10% instead.


 68.0000, 0.3255,
0.3280

 68.0000, 0.3255,
0.3280


453.4960, 0.3195,
0.3285

 49.8977, 0.3269,
0.3279

116.3521, 0.3234,
0.3282

 35.3321, 0.3286,
0.3277


147.3708, 0.3226,
0.3282

 23.9188, 0.3309,
0.3275

183.4637, 0.3219,
0.3283

 15.2734, 0.3338,
0.3272

225.0153, 0.3213,
0.3284

 9.0115, 0.3379,
0.3268

272.4099, 0.3208,
0.3284

 4.7487, 0.3439,
0.3262

326.0320, 0.3203,

 2.1006, 0.3538,

0.3284

386.2659, 0.3199,
0.3285

0.3251

0.6650, 0.3836,
0.3239

0.0000, 0.0000,
0.0000

68.0000, 0.3255,
0.3280

68.0000, 0.3255,
0.3280

56.4018, 0.3454,
0.3267

81.3716, 0.3096,
0.3293

46.4942, 0.3702,
0.3253

95.3939, 0.2970,
0.3290

38.2009, 0.4009,
0.3239

31.4363, 0.4381,
0.3227

■ 26.1072, 0.4811,
0.3220

■ 22.1098, 0.5278,
0.3220

■ 19.3268, 0.5731,
0.3229

■ 17.6200, 0.6099,
0.3249

■ 16.8011, 0.6325,
0.3274

Harmonies

Analogous

The Analogous color harmony consists of three colors that are next to each other on the color wheel.



68.0000, 0.3189, 0.3213



68.0000, 0.3255, 0.3280



68.0000, 0.3286, 0.3351

Triad

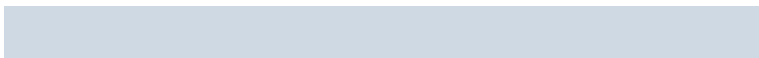
The Triadic color harmony groups three colors that are evenly spaced from another and form a triangle on the color wheel.



68.0000, 0.3255, 0.3280



68.0000, 0.3146, 0.3419



68.0000, 0.2982, 0.3173

Complementary

The Complementary color scheme is a pair of colors which are on the opposite of each other on the color wheel.



68.0000, 0.3255, 0.3280



75.4789, 0.3012, 0.3300

Split Complementary

Split-complementary colors differ from the complementary color scheme. The scheme consists of three colors, the original color and two neighbors of the complement color.



68.0000, 0.2971, 0.3226



68.0000, 0.3255, 0.3280



68.0000, 0.3065, 0.3369

Square

The Square scheme is like the rectangle color scheme, but the four colors are evenly spaced on the color wheel.



68.0000, 0.3255, 0.3280



68.0000, 0.3223, 0.3432



68.0000, 0.3001, 0.3299



68.0000, 0.3031, 0.3151

Rectangle

The Rectangle color scheme consists of four colors that form a rectangle on the color wheel.



68.0000, 0.3255, 0.3280



68.0000, 0.3283, 0.3391



68.0000, 0.3001, 0.3299



68.0000, 0.2973, 0.3188

Sweetspot

The Sweet Spot groups the original color and five complimentary colors.



68.0030, 0.3255, 0.3280



96.4819, 0.3158, 0.3288



68.7105, 0.3127, 0.3098



20.6879, 0.3156, 0.3288



0.0000, 0.0000, 0.0000



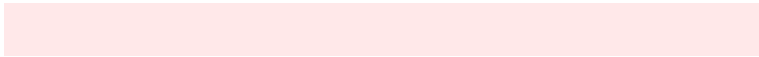
21.4041, 0.3127, 0.3290

Same Dimension

The Same Dimension uses a secret algorithm to generate beautiful new colors.



68.0030, 0.3255, 0.3280



84.8999, 0.3277, 0.3278



71.9161, 0.3254, 0.3374



14.3803, 0.3284, 0.3278



9.5450, 0.6343, 0.3268



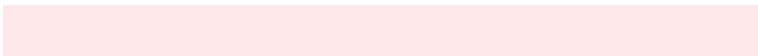
0.7097, 0.6184, 0.3180

Inverse Universe

The Inverse Universe completely reimagines the original color for something new.



68.0030, 0.3255, 0.3280



84.8999, 0.3277, 0.3278



71.3222, 0.3006, 0.3204



14.3803, 0.3284, 0.3278



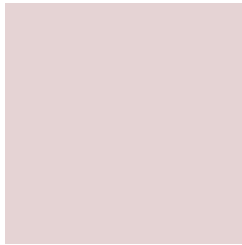
9.5450, 0.6343, 0.3268



0.7097, 0.6184, 0.3180

Previews

White Background



This preview shows how the Yxy color 68.0000, 0.3255, 0.3280 looks on a white background.

Color Contrast Check

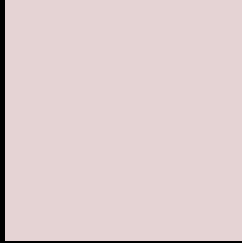
Large Text (above 18pt) WCAG AA × Fail

Any Text WCAG AA × Fail

Large Text (above 18pt) WCAG AAA × Fail

Any Text WCAG AAA × Fail

Black Background



This preview shows how the Yxy color 68.0000, 0.3255, 0.3280 looks on a black background.

Color Contrast Check

Large Text (above 18pt) WCAG AA ✓ Pass

Any Text WCAG AA ✓ Pass

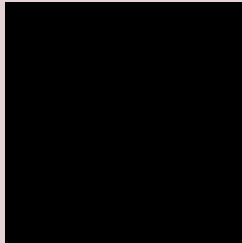
Large Text (above 18pt) WCAG AAA ✓ Pass

Any Text WCAG AAA ✓ Pass

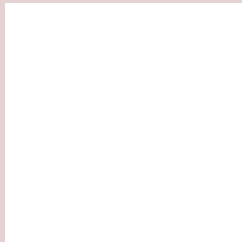
If you want to check with other color combinations, try the [Color Contrast Checker](#).

Yxy 68.0000, 0.3255, 0.3280

Background



This preview shows how black text looks on a background with the Yxy color 68.0000, 0.3255, 0.3280.



This preview shows how white text looks on a background with the Yxy color 68.0000, 0.3255, 0.3280.

Color Blindness Simulation

Color vision deficiency is a very complex topic, and I could not describe the different causes any better than Wikipedia does, so if you want to learn more, you should check out their [article about color blindness](#).

Dichromacy



Original Color

68.0000, 0.3255, 0.3280

Protanopia

68.0082, 0.3164, 0.3290

Deuteranopia

67.9204, 0.3312, 0.3237



Tritanopia

68.0261, 0.3180, 0.3119

Trichromacy



Original Color

68.0000, 0.3255, 0.3280

Protanomaly

68.0806, 0.3201, 0.3290

Deuteranomaly

67.8974, 0.3288, 0.3248

Tritanomaly

68.0835, 0.3207, 0.3183

Monochromacy



Original Color

68.0000, 0.3255, 0.3280

Achromatopsia

68.6685, 0.3127, 0.3290

Achromatomaly

68.3716, 0.3172, 0.3279

CSS Examples

Text

The CSS property to change the color of the text to Yxy 68.0000, 0.3255, 0.3280 is called "color". The color property can be set on classes, ids or directly on the HTML element.

This example shows how text in the color `rgb(229, 211, 212)` looks like.

```
.text, #text, p{  
    color:rgb(229, 211, 212)  
}
```

If you want to add a text shadow in that color use the text-shadow property, you can generate a text shadow directly with our [CSS Text Shadow Generator](#).

Here you see how black text with a 4 pixel rgb(229, 211, 212) colored shadow looks like.

```
.shadow{ text-shadow: 4px 4px 2px rgb(229, 211, 212) }
```

Border

The CSS property to change the border of an element to Yxy 68.0000, 0.3255, 0.3280 is called "border". The border property can be set on classes, ids or directly on the HTML element.

This example shows the color as border, it can be applied via the CSS property "border" or "border-color".

```
.border, #border, table{ border:4px solid rgb(229, 211, 212) }
```

If only the border color should be changed use the property `border-color`.

```
.border{ border-color:rgb(229, 211, 212) }
```

If you want to add a box shadow in that color use:

Here you see how a box with a 4 pixel `rgb(229, 211, 212)` colored shadow looks like.

```
.boxshadow{ -moz-box-shadow:4px 4px 4px  
4px rgb(229, 211, 212); -webkit-box-  
shadow:4px 4px 4px 4px rgb(229, 211, 212);  
box-shadow:4px 4px 4px 4px rgb(229, 211,  
212) }
```


Background

The CSS property to change the background color of an element to Yxy 68.0000, 0.3255, 0.3280 is called "background". The background property can be set on classes, ids or directly on the HTML element.

```
.background, #background, body{  
background: rgb(229, 211, 212) }
```

If only the background color should be changed can be used:

```
.background{ background-color: rgb(229,  
211, 212) }
```

This example shows the color as background, it is applied via the CSS property "background".

To optimize and compress your CSS code, you can use our [online CSS compressor and optimizer](#) based on csstidy. If you want to create a linear or radial gradient as background or border, check our [CSS Gradient Generator](#).

Hey! You found this booklet interesting? Support Converting Colors with the new Membership Option!

The pro membership hides all ads, plus gives you double the colors in the color bucket, and more awesome pro features!

[Learn more, Memberships starting at \\$2.50/m!](#)

**Follow me
on Twitter!**

@ConvertingColor