

Converting Colors

Yxy(67.8802, 0.3214, 0.3241)

Have a look what the booklet for
Yxy(67.8802, 0.3214, 0.3241)
contains.

Yxy(67.8773, 0.3212, 0.3236)	3
<i>Conversions</i>	4
<i>Details</i>	6
<i>Harmonies</i>	12
<i>Previews</i>	24
<i>Color Blindness Simulation</i>	27
<i>CSS Examples</i>	30

Color

Yxy(67.8773, 0.3212, 0.3236)

Conversions

Conversions Part 1

Format	Color
Hex	E3D3D8
RGB	227, 211, 216
RGB Percent	89%, 83%, 85%
CMY	0.1097, 0.1726, 0.1530
CMYK	0.00, 0.07, 0.05, 0.11
HSL	341°, 22%, 86%
HSV	341°, 7%, 89%
XYZ	67.3739, 67.8773, 74.5056
YIQ	216.3540, 7.9310, 4.9470

Conversions

Conversions Part 2

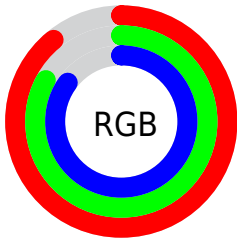
Format	Color
R _Y B	227, 211, 216
Decimal	14930904
CIE Lab	85.95, 6.40, -0.47
CIE LCh	86, 6.414, 355.767
Yxy	67.8773, 0.3212, 0.3236
Android (android.graphics.Color)	4293120984 (0xFFE3D3D8)
YUV	216.3540, -0.1745, 9.3365
Hunter-Lab	82.3877, 1.7929, 4.0537

Details

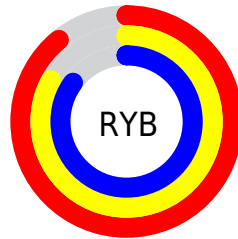
The Yxy color **67.8773, 0.3212, 0.3236** is a light color, and the websafe version is hex **CCCCCC**. A complement of this color would be **74.0823, 0.3049, 0.3345**, and the grayscale version is **68.9243, 0.3127, 0.3290**.

A 20% lighter version of the original color is **100.0000, 0.3127, 0.3290**, and **35.1208, 0.3239, 0.3219** is the 20% darker color. If you saturate the color by 10%, you get **56.6144, 0.3355, 0.3155**, and if you desaturate by 10%, it is **80.8163, 0.3095, 0.3312**.

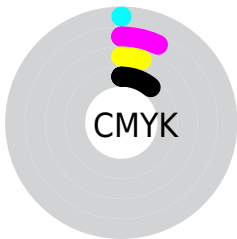
Distribution



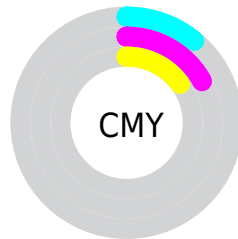
- Red (89%)
- Green (83%)
- Blue (85%)



- Red (89%)
- Yellow (83%)
- Blue (85%)



- Cyan (0%)
- Magenta (7%)
- Yellow (5%)
- Black (11%)



- Cyan (11%)
- Magenta (17%)
- Yellow (15%)

Brightness & Saturation Gradients

These gradients show how the Yxy color 67.8773, 0.3212, 0.3236 changes by changing the brightness by 10 percent. The first figure shows a shift by +10% for each color and the second figure -10%.

Similar to the brightness gradients but the following saturation gradients show a change of the Yxy color 67.8773, 0.3212, 0.3236 by changing the saturation by 10% instead.

67.8773, 0.3212,
0.3236

67.8773, 0.3212,
0.3236

453.0612, 0.3172,
0.3261

49.7979, 0.3221,
0.3230

116.1766, 0.3198,
0.3245

35.2529, 0.3233,
0.3223

147.1653, 0.3193,
0.3248

23.8577, 0.3247,
0.3214

183.2259, 0.3188,
0.3251

15.2281, 0.3267,
0.3201

224.7428, 0.3184,
0.3254

8.9796, 0.3293,
0.3184

272.1004, 0.3181,
0.3256

4.7279, 0.3333,
0.3159

325.6830, 0.3178,

2.0885, 0.3397,

0.3258

0.3119

385.8752, 0.3175,
0.3260

0.6582, 0.3570,
0.3006

0.0000, 0.0000,
0.0000

67.8773, 0.3212,
0.3236

67.8773, 0.3212,
0.3236

56.6144, 0.3355,
0.3155

80.8163, 0.3095,
0.3312

46.9501, 0.3531,
0.3071

94.5886, 0.3000,
0.3367

38.8141, 0.3744,
0.2986

95.0767, 0.2958,
0.3290

32.1272, 0.4000,
0.2907

■ 26.8033, 0.4300,
0.2840

■ 22.7469, 0.4637,
0.2797

■ 19.8500, 0.4998,
0.2791

■ 17.9864, 0.5353,
0.2830

■ 16.9923, 0.5670,
0.2916

Harmonies

Analogous

The Analogous color harmony consists of three colors that are next to each other on the color wheel.



67.8773, 0.3135, 0.3182



67.8773, 0.3212, 0.3236



67.8773, 0.3266, 0.3304

Triad

The Triadic color harmony groups three colors that are evenly spaced from another and form a triangle on the color wheel.



67.8773, 0.3212, 0.3236



67.8773, 0.3196, 0.3428



67.8773, 0.2974, 0.3208

Complementary

The Complementary color scheme is a pair of colors which are on the opposite of each other on the color wheel.



67.8773, 0.3212, 0.3236



74.0823, 0.3049, 0.3345

Split Complementary

Split-complementary colors differ from the complementary color scheme. The scheme consists of three colors, the original color and two neighbors of the complement color.



67.8773, 0.2990, 0.3273



67.8773, 0.3212, 0.3236



67.8773, 0.3118, 0.3402

Square

The Square scheme is like the rectangle color scheme, but the four colors are evenly spaced on the color wheel.



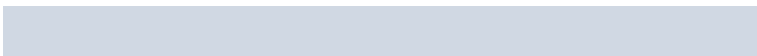
67.8773, 0.3212, 0.3236



67.8773, 0.3257, 0.3416



67.8773, 0.3042, 0.3345



67.8773, 0.2999, 0.3165

Rectangle

The Rectangle color scheme consists of four colors that form a rectangle on the color wheel.



67.8773, 0.3212, 0.3236



67.8773, 0.3282, 0.3350



67.8773, 0.3042, 0.3345



67.8773, 0.2975, 0.3228

Sweetspot

The Sweet Spot groups the original color and five complimentary colors.



67.8803, 0.3212, 0.3236



96.5648, 0.3150, 0.3275



67.6572, 0.3098, 0.3116



20.7048, 0.3149, 0.3276



0.0000, 0.0000, 0.0000



21.4041, 0.3127, 0.3290

Same Dimension

The Same Dimension uses a secret algorithm to generate beautiful new colors.



67.8803, 0.3212, 0.3236



86.7955, 0.3225, 0.3228



69.1006, 0.3244, 0.3322



14.4415, 0.3244, 0.3217



9.8052, 0.5717, 0.2923



0.7408, 0.5302, 0.2694

Inverse Universe

The Inverse Universe completely reimagines the original color for something new.



67.8803, 0.3212, 0.3236



86.7955, 0.3225, 0.3228



72.7586, 0.3018, 0.3257



14.4415, 0.3244, 0.3217



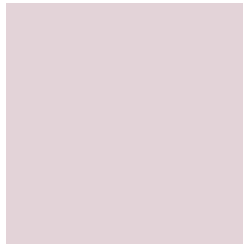
9.8052, 0.5717, 0.2923



0.7408, 0.5302, 0.2694

Previews

White Background



This preview shows how the Yxy color 67.8773, 0.3212, 0.3236 looks on a white background.

Color Contrast Check

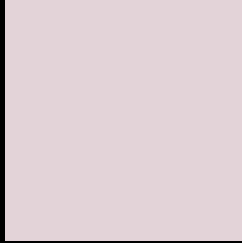
Large Text (above 18pt) WCAG AA × Fail

Any Text WCAG AA × Fail

Large Text (above 18pt) WCAG AAA × Fail

Any Text WCAG AAA × Fail

Black Background



This preview shows how the Yxy color 67.8773, 0.3212, 0.3236 looks on a black background.

Color Contrast Check

Large Text (above 18pt) WCAG AA ✓ Pass

Any Text WCAG AA ✓ Pass

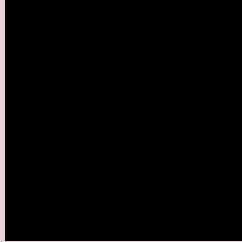
Large Text (above 18pt) WCAG AAA ✓ Pass

Any Text WCAG AAA ✓ Pass

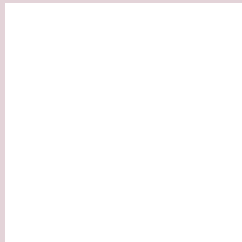
If you want to check with other color combinations, try the [Color Contrast Checker](#).

Yxy 67.8773, 0.3212, 0.3236

Background



This preview shows how black text looks on a background with the Yxy color 67.8773, 0.3212, 0.3236.

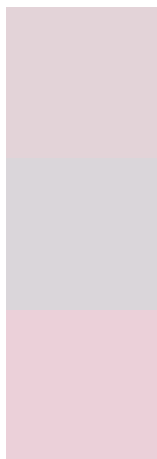


This preview shows how white text looks on a background with the Yxy color 67.8773, 0.3212, 0.3236.

Color Blindness Simulation

Color vision deficiency is a very complex topic, and I could not describe the different causes any better than Wikipedia does, so if you want to learn more, you should check out their [article about color blindness](#).

Dichromacy



Original Color

67.8773, 0.3212, 0.3236

Protanopia

68.0605, 0.3129, 0.3246

Deuteranopia

67.7837, 0.3268, 0.3194



Tritanopia

67.5859, 0.3151, 0.3107

Trichromacy



Original Color

67.8773, 0.3212, 0.3236

Protanomaly

67.9704, 0.3159, 0.3246

Deuteranomaly

67.7665, 0.3244, 0.3204

Tritanomaly

67.8611, 0.3178, 0.3161

Monochromacy



Original Color

67.8773, 0.3212, 0.3236

Achromatopsia

68.6685, 0.3127, 0.3290

Achromatomaly

68.2666, 0.3157, 0.3268

CSS Examples

Text

The CSS property to change the color of the text to Yxy 67.8773, 0.3212, 0.3236 is called "color". The color property can be set on classes, ids or directly on the HTML element.

This example shows how text in the color `rgb(227, 211, 216)` looks like.

```
.text, #text, p{  
    color:rgb(227, 211, 216)  
}
```

If you want to add a text shadow in that color use the text-shadow property, you can generate a text shadow directly with our [CSS Text Shadow Generator](#).

Here you see how black text with a 4 pixel rgb(227, 211, 216) colored shadow looks like.

```
.shadow{ text-shadow: 4px 4px 2px rgb(227, 211, 216) }
```

Border

The CSS property to change the border of an element to Yxy 67.8773, 0.3212, 0.3236 is called "border". The border property can be set on classes, ids or directly on the HTML element.

This example shows the color as border, it can be applied via the CSS property "border" or "border-color".

```
.border, #border, table{ border:4px solid rgb(227, 211, 216) }
```

If only the border color should be changed use the property border-color.

```
.border{ border-color:rgb(227, 211, 216) }
```

If you want to add a box shadow in that color use:

Here you see how a box with a 4 pixel rgb(227, 211, 216) colored shadow looks like.

```
.boxshadow{ -moz-box-shadow:4px 4px 4px  
4px rgb(227, 211, 216); -webkit-box-  
shadow:4px 4px 4px 4px rgb(227, 211, 216);  
box-shadow:4px 4px 4px 4px rgb(227, 211,  
216) }
```


Background

The CSS property to change the background color of an element to Yxy 67.8773, 0.3212, 0.3236 is called "background". The background property can be set on classes, ids or directly on the HTML element.

```
.background, #background, body{  
background: rgb(227, 211, 216) }
```

If only the background color should be changed can be used:

```
.background{ background-color: rgb(227,  
211, 216) }
```

This example shows the color as background, it is applied via the CSS property "background".

To optimize and compress your CSS code, you can use our [online CSS compressor and optimizer](#) based on csstidy. If you want to create a linear or radial gradient as background or border, check our [CSS Gradient Generator](#).

Hey! You found this booklet interesting? Support Converting Colors with the new Membership Option!

The pro membership hides all ads, plus gives you double the colors in the color bucket, and more awesome pro features!

[Learn more, Memberships starting at \\$2.50/m!](#)

**Follow me
on Twitter!**

@ConvertingColor