

Converting Colors

$Y_{xy}(67.9824, 0.3284, 0.3250)$

Have a look what the booklet for
Yxy(67.9824, 0.3284, 0.3250)
contains.

Yxy(67.8974, 0.3288, 0.3248)	3
Conversions	4
Details	6
Harmonies	12
Previews	24
Color Blindness Simulation	27
CSS Examples	30

Color

Yxy(67.8974, 0.3288, 0.3248)

Conversions

Conversions Part 1

Format	Color
Hex	EAD1D5
RGB	234, 209, 213
RGB Percent	92%, 82%, 84%
CMY	0.0824, 0.1803, 0.1648
CMYK	0.00, 0.11, 0.09, 0.08
HSL	350°, 37%, 87%
HSV	350°, 11%, 92%
XYZ	68.7336, 67.8974, 72.4127
YIQ	216.9310, 13.6160, 6.5440

Conversions

Conversions Part 2

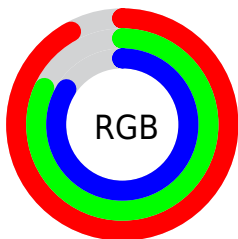
Format	Color
R_{YB}	234, 209, 213
Decimal	15389141
CIE _{Lab}	85.96, 9.33, 1.21
CIE _{LCh}	86, 9.410, 7.387
Yxy	67.8974, 0.3288, 0.3248
Android (android.graphics.Color)	4293579221 (0xFFEAD1D5)
YUV	216.9310, -1.9380, 14.9695
Hunter-Lab	82.3999, 4.6954, 5.5761

Details

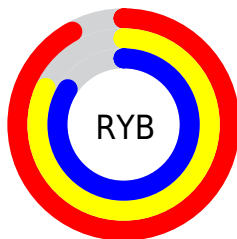
The Yxy color $67.8974, 0.3288, 0.3248$ is a light color, and the websafe version is hex `CCCCCC`. A complement of this color would be $78.1055, 0.2987, 0.3332$, and the grayscale version is $69.3439, 0.3127, 0.3290$.

A 20% lighter version of the original color is $100.0000, 0.3127, 0.3290$, and $35.3763, 0.3329, 0.3249$ is the 20% darker color. If you saturate the color by 10%, you get $56.3088, 0.3477, 0.3206$, and if you desaturate by 10%, it is $81.2995, 0.3136, 0.3287$.

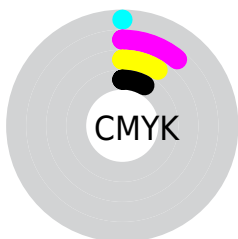
Distribution



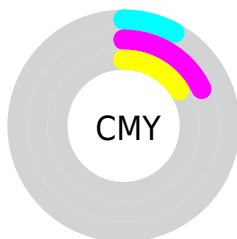
- Red (92%)
- Green (82%)
- Blue (84%)



- Red (92%)
- Yellow (82%)
- Blue (84%)



- Cyan (0%)
- Magenta (11%)
- Yellow (9%)
- Black (8%)




- Cyan (8%)
- Magenta (18%)
- Yellow (16%)

Brightness & Saturation Gradients


These gradients show how the Yxy color 67.8974, 0.3288, 0.3248 changes by changing the brightness by 10 percent. The first figure shows a shift by +10% for each color and the second figure -10%.

Similar to the brightness gradients but the following saturation gradients show a change of the Yxy color 67.8974, 0.3288, 0.3248 by changing the saturation by 10% instead.


 67.8974, 0.3288,
0.3248

 67.8974, 0.3288,
0.3248

453.1324, 0.3212,
0.3268

 49.8143, 0.3306,
0.3243


116.2054, 0.3262,
0.3255

 35.2658, 0.3327,
0.3237


147.1990, 0.3251,
0.3258

 23.8677, 0.3355,
0.3230


183.2649, 0.3243,
0.3260

 15.2355, 0.3392,
0.3220

224.7874, 0.3235,
0.3262

 8.9849, 0.3444,
0.3206

272.1511, 0.3228,
0.3264

 4.7313, 0.3520,
0.3184

325.7402, 0.3222,

 2.0905, 0.3643,

0.3265

0.3149

385.9392, 0.3217,
0.3267

0.6593, 0.3980,
0.3071

0.0000, 0.0000,
0.0000

67.8974, 0.3288,
0.3248

67.8974, 0.3288,
0.3248

56.3088, 0.3477,
0.3206

81.2995, 0.3136,
0.3287

46.4472, 0.3710,
0.3163

96.0595, 0.3014,
0.3316

38.2324, 0.3996,
0.3121

96.2287, 0.2999,
0.3290

31.5743, 0.4339,
0.3084

■ 26.3743, 0.4735,
0.3059

■ 22.5225, 0.5166,
0.3055

■ 19.8930, 0.5591,
0.3077

■ 18.3362, 0.5956,
0.3128

■ 17.6227, 0.6203,
0.3191

Harmonies

Analogous

The Analogous color harmony consists of three colors that are next to each other on the color wheel.



67.8974, 0.3184, 0.3159



67.8974, 0.3288, 0.3248



67.8974, 0.3348, 0.3349

Triad

The Triadic color harmony groups three colors that are evenly spaced from another and form a triangle on the color wheel.



67.8974, 0.3288, 0.3248



67.8974, 0.3185, 0.3485



67.8974, 0.2911, 0.3139

Complementary

The Complementary color scheme is a pair of colors which are on the opposite of each other on the color wheel.



67.8974, 0.3288, 0.3248



78.1055, 0.2987, 0.3332

Split Complementary

Split-complementary colors differ from the complementary color scheme. The scheme consists of three colors, the original color and two neighbors of the complement color.



67.8974, 0.2911, 0.3224



67.8974, 0.3288, 0.3248



67.8974, 0.3068, 0.3427

Square

The Square scheme is like the rectangle color scheme, but the four colors are evenly spaced on the color wheel.



67.8974, 0.3288, 0.3248



67.8974, 0.3288, 0.3488



67.8974, 0.2968, 0.3330



67.8974, 0.2967, 0.3096

Rectangle

The Rectangle color scheme consists of four colors that form a rectangle on the color wheel.



67.8974, 0.3288, 0.3248



67.8974, 0.3355, 0.3411



67.8974, 0.2968, 0.3330



67.8974, 0.2904, 0.3164

Sweetspot

The Sweet Spot groups the original color and five complimentary colors.



67.9004, 0.3288, 0.3248



94.8080, 0.3169, 0.3279



68.3412, 0.3109, 0.3026



20.0033, 0.3181, 0.3275



0.0000, 0.0000, 0.0000



21.4041, 0.3127, 0.3290

Same Dimension

The Same Dimension uses a secret algorithm to generate beautiful new colors.



67.9004, 0.3288, 0.3248



78.9745, 0.3329, 0.3238



71.8927, 0.3306, 0.3380



15.0929, 0.3268, 0.3253



9.9169, 0.6173, 0.3174



0.7905, 0.5828, 0.2984

Inverse Universe

The Inverse Universe completely reimagines the original color for something new.



67.9004, 0.3288, 0.3248



78.9745, 0.3329, 0.3238



73.7037, 0.2962, 0.3199



15.0929, 0.3268, 0.3253



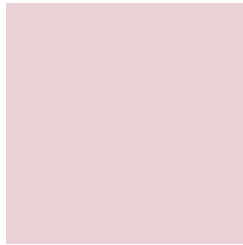
9.9169, 0.6173, 0.3174



0.7905, 0.5828, 0.2984

Previews

White Background



This preview shows how the Yxy color 67.8974, 0.3288, 0.3248 looks on a white background.

Color Contrast Check

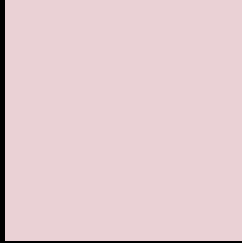
Large Text (above 18pt) WCAG AA × Fail

Any Text WCAG AA × Fail

Large Text (above 18pt) WCAG AAA × Fail

Any Text WCAG AAA × Fail

Black Background



This preview shows how the Yxy color 67.8974, 0.3288, 0.3248 looks on a black background.

Color Contrast Check

Large Text (above 18pt) WCAG AA ✓ Pass

Any Text WCAG AA ✓ Pass

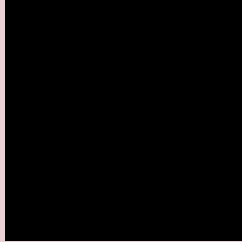
Large Text (above 18pt) WCAG AAA ✓ Pass

Any Text WCAG AAA ✓ Pass

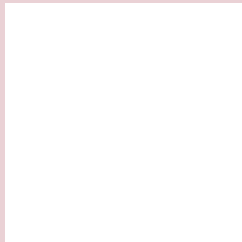
If you want to check with other color combinations, try the [Color Contrast Checker](#).

Yxy 67.8974, 0.3288, 0.3248

Background



This preview shows how black text looks on a background with the Yxy color 67.8974, 0.3288, 0.3248.



This preview shows how white text looks on a background with the Yxy color 67.8974, 0.3288, 0.3248.

Color Blindness Simulation

Color vision deficiency is a very complex topic, and I could not describe the different causes any better than Wikipedia does, so if you want to learn more, you should check out their [article about color blindness](#).

Dichromacy



Original Color

67.8974, 0.3288, 0.3248

Protanopia

67.9564, 0.3143, 0.3268

Deuteranopia

67.7487, 0.3304, 0.3237



Tritanopia

67.6696, 0.3218, 0.3110

Trichromacy



Original Color

67.8974, 0.3288, 0.3248

Protanomaly

67.8406, 0.3195, 0.3257

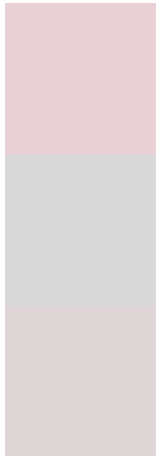
Deuteranomaly

67.5780, 0.3297, 0.3237

Tritanomaly

67.9412, 0.3246, 0.3163

Monochromacy



Original Color

67.8974, 0.3288, 0.3248

Achromatopsia

69.3872, 0.3127, 0.3290

Achromatomaly

68.7390, 0.3180, 0.3268

CSS Examples

Text

The CSS property to change the color of the text to Yxy 67.8974, 0.3288, 0.3248 is called "color". The color property can be set on classes, ids or directly on the HTML element.

This example shows how text in the color `rgb(234, 209, 213)` looks like.

```
.text, #text, p{  
    color:rgb(234, 209, 213)  
}
```

If you want to add a text shadow in that color use the text-shadow property, you can generate a text shadow directly with our [CSS Text Shadow Generator](#).

Here you see how black text with a 4 pixel rgb(234, 209, 213) colored shadow looks like.

```
.shadow{ text-shadow: 4px 4px 2px rgb(234, 209, 213) }
```

Border

The CSS property to change the border of an element to Yxy 67.8974, 0.3288, 0.3248 is called "border". The border property can be set on classes, ids or directly on the HTML element.

This example shows the color as border, it can be applied via the CSS property "border" or "border-color".

```
.border, #border, table{ border:4px solid rgb(234, 209, 213) }
```

If only the border color should be changed use the property `border-color`.

```
.border{ border-color:rgb(234, 209, 213) }
```

If you want to add a box shadow in that color use:

Here you see how a box with a 4 pixel `rgb(234, 209, 213)` colored shadow looks like.

```
.boxshadow{ -moz-box-shadow:4px 4px 4px  
4px rgb(234, 209, 213); -webkit-box-  
shadow:4px 4px 4px 4px rgb(234, 209, 213);  
box-shadow:4px 4px 4px 4px rgb(234, 209,  
213) }
```


Background

The CSS property to change the background color of an element to $\text{Yxy } 67.8974, 0.3288, 0.3248$ is called "background". The background property can be set on classes, ids or directly on the HTML element.

```
.background, #background, body{  
background: rgb(234, 209, 213) }
```

If only the background color should be changed can be used:

```
.background{ background-color: rgb(234,  
209, 213) }
```

This example shows the color as background, it is applied via the CSS property "background".

To optimize and compress your CSS code, you can use our [online CSS compressor and optimizer](#) based on csstidy. If you want to create a linear or radial gradient as background or border, check our [CSS Gradient Generator](#).

Hey! You found this booklet interesting? Support Converting Colors with the new Membership Option!

The pro membership hides all ads, plus gives you double the colors in the color bucket, and more awesome pro features!

[Learn more, Memberships starting at \\$2.50/m!](#)

**Follow me
on Twitter!**

@ConvertingColor