

Converting Colors

Yxy(68.1106, 0.3300, 0.3340)

Have a look what the booklet for
Yxy(68.1106, 0.3300, 0.3340)
contains.

Yxy(67.9165, 0.3298, 0.3334)	3
Conversions	4
Details	6
Harmonies	12
Previews	24
Color Blindness Simulation	27
CSS Examples	30

Color

Yxy(67.9165, 0.3298, 0.3334)

Conversions

Conversions Part 1

Format	Color
Hex	E6D3CF
RGB	230, 211, 207
RGB Percent	90%, 83%, 81%
CMY	0.0982, 0.1725, 0.1882
CMYK	0.00, 0.08, 0.10, 0.10
HSL	10°, 31%, 86%
HSV	10°, 10%, 90%
XYZ	67.1831, 67.9165, 68.6091
YIQ	216.2250, 12.6080, 2.7840

Conversions

Conversions Part 2

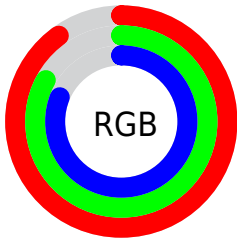
Format	Color
R _Y B	230, 212, 207
Decimal	15127503
CIE Lab	85.96, 5.89, 4.34
CIE LCh	86, 7.316, 36.369
Yxy	67.9165, 0.3298, 0.3334
Android (android.graphics.Color)	4293317583 (0xFFE6D3CF)
YUV	216.2250, -4.5479, 12.0807
Hunter-Lab	82.4115, 1.2960, 8.3280

Details

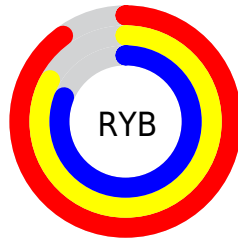
The Yxy color **67.9165, 0.3298, 0.3334** is a light color, and the websafe version is hex **CCCCCC**. A complement of this color would be **73.3541, 0.2973, 0.3246**, and the grayscale version is **68.8556, 0.3127, 0.3290**.

A 20% lighter version of the original color is **100.0000, 0.3127, 0.3290**, and **35.4125, 0.3333, 0.3347** is the 20% darker color. If you saturate the color by 10%, you get **57.9897, 0.3506, 0.3381**, and if you desaturate by 10%, it is **79.1277, 0.3127, 0.3290**.

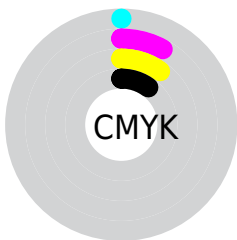
Distribution



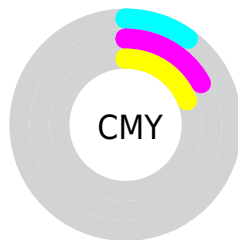
- Red (90%)
- Green (83%)
- Blue (81%)



- Red (90%)
- Yellow (83%)
- Blue (81%)



- Cyan (0%)
- Magenta (8%)
- Yellow (10%)
- Black (10%)





- Cyan (10%)
- Magenta (17%)
- Yellow (19%)

Brightness & Saturation Gradients


These gradients show how the Yxy color 67.9165, 0.3298, 0.3334 changes by changing the brightness by 10 percent. The first figure shows a shift by +10% for each color and the second figure -10%.

Similar to the brightness gradients but the following saturation gradients show a change of the Yxy color 67.9165, 0.3298, 0.3334 by changing the saturation by 10% instead.

 67.9165, 0.3298,
0.3334

 67.9165, 0.3298,
0.3334

453.2001, 0.3218,
0.3314

 49.8298, 0.3317,
0.3338


116.2327, 0.3270,
0.3327

 35.2782, 0.3340,
0.3344


147.2310, 0.3259,
0.3324

 23.8772, 0.3370,
0.3351


183.3019, 0.3250,
0.3322

 15.2426, 0.3409,
0.3360

224.8299, 0.3242,
0.3320

 8.9898, 0.3464,
0.3372

272.1993, 0.3234,
0.3318

 4.7345, 0.3546,
0.3389

325.7945, 0.3228,

 2.0924, 0.3679,

0.3317

0.3414

386.0000, 0.3223,
0.3315

0.6603, 0.4176,
0.3574

0.0000, 0.0000,
0.0000

67.9165, 0.3298,
0.3334

67.9165, 0.3298,
0.3334

57.9897, 0.3506,
0.3381

79.1277, 0.3127,
0.3290

49.2928, 0.3758,
0.3430

91.6577, 0.2986,
0.3249

41.7801, 0.4061,
0.3479

95.5575, 0.2975,
0.3290

35.4001, 0.4416,
0.3522

■ 30.0974, 0.4818,
0.3554

■ 25.8117, 0.5245,
0.3565

■ 22.4767, 0.5658,
0.3547

■ 20.0178, 0.6001,
0.3498

■ 18.3427, 0.6239,
0.3428

Harmonies

Analogous

The Analogous color harmony consists of three colors that are next to each other on the color wheel.



67.9165, 0.3250, 0.3255



67.9165, 0.3298, 0.3334



67.9165, 0.3300, 0.3403

Triad

The Triadic color harmony groups three colors that are evenly spaced from another and form a triangle on the color wheel.



67.9165, 0.3298, 0.3334



67.9165, 0.3084, 0.3398



67.9165, 0.3000, 0.3139

Complementary

The Complementary color scheme is a pair of colors which are on the opposite of each other on the color wheel.



67.9165, 0.3298, 0.3334



73.3541, 0.2973, 0.3246

Split Complementary

Split-complementary colors differ from the complementary color scheme. The scheme consists of three colors, the original color and two neighbors of the complement color.



67.9165, 0.2958, 0.3175



67.9165, 0.3298, 0.3334



67.9165, 0.3006, 0.3324

Square

The Square scheme is like the rectangle color scheme, but the four colors are evenly spaced on the color wheel.



67.9165, 0.3298, 0.3334



67.9165, 0.3175, 0.3442



67.9165, 0.2959, 0.3242



67.9165, 0.3077, 0.3144

Rectangle

The Rectangle color scheme consists of four colors that form a rectangle on the color wheel.



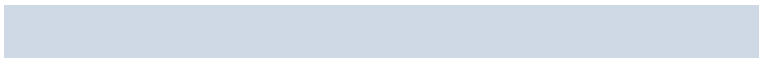
67.9165, 0.3298, 0.3334



67.9165, 0.3274, 0.3434



67.9165, 0.2959, 0.3242



67.9165, 0.2982, 0.3147

Sweetspot

The Sweet Spot groups the original color and five complimentary colors.



67.9195, 0.3298, 0.3334



95.5526, 0.3175, 0.3303



66.9497, 0.3165, 0.3085



20.2033, 0.3189, 0.3306



0.0000, 0.0000, 0.0000



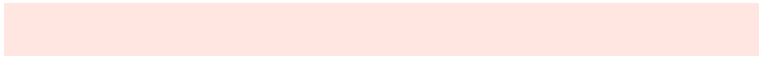
21.4041, 0.3127, 0.3290

Same Dimension

The Same Dimension uses a secret algorithm to generate beautiful new colors.



67.9195, 0.3298, 0.3334



83.1083, 0.3338, 0.3344



73.7342, 0.3284, 0.3455



14.7719, 0.3288, 0.3332



10.5097, 0.6218, 0.3445



0.8967, 0.5955, 0.3653

Inverse Universe

The Inverse Universe completely reimagines the original color for something new.



73.3541, 0.2973, 0.3246



91.2962, 0.2942, 0.3236



67.4102, 0.2972, 0.3119



15.8865, 0.2981, 0.3248



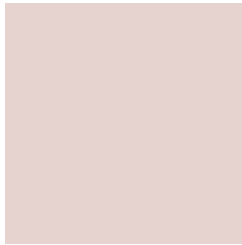
24.2250, 0.2090, 0.2725



1.9030, 0.2116, 0.2817

Previews

White Background



This preview shows how the Yxy color 67.9165, 0.3298, 0.3334 looks on a white background.

Color Contrast Check

Large Text (above 18pt) WCAG AA × Fail

Any Text WCAG AA × Fail

Large Text (above 18pt) WCAG AAA × Fail

Any Text WCAG AAA × Fail

Black Background



This preview shows how the Yxy color 67.9165, 0.3298, 0.3334 looks on a black background.

Color Contrast Check

Large Text (above 18pt) WCAG AA ✓ Pass

Any Text WCAG AA ✓ Pass

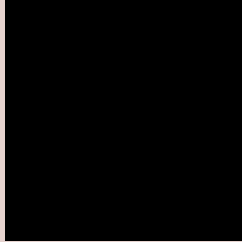
Large Text (above 18pt) WCAG AAA ✓ Pass

Any Text WCAG AAA ✓ Pass

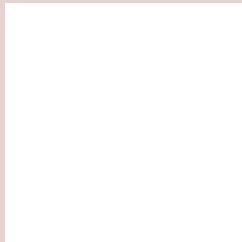
If you want to check with other color combinations, try the [Color Contrast Checker](#).

Yxy 67.9165, 0.3298, 0.3334

Background



This preview shows how black text looks on a background with the Yxy color 67.9165, 0.3298, 0.3334.

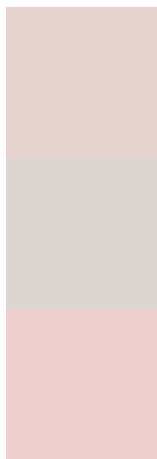


This preview shows how white text looks on a background with the Yxy color 67.9165, 0.3298, 0.3334.

Color Blindness Simulation

Color vision deficiency is a very complex topic, and I could not describe the different causes any better than Wikipedia does, so if you want to learn more, you should check out their [article about color blindness](#).

Dichromacy



Original Color

67.9165, 0.3298, 0.3334

Protanopia

67.9122, 0.3206, 0.3346

Deuteranopia

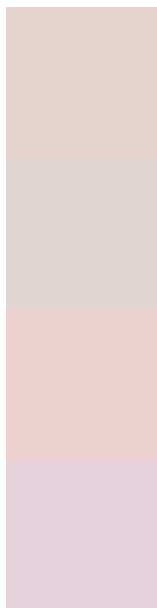
68.0165, 0.3364, 0.3291



Tritanopia

67.7038, 0.3188, 0.3109

Trichromacy



Original Color

67.9165, 0.3298, 0.3334

Protanomaly

67.9899, 0.3244, 0.3345

Deuteranomaly

67.9879, 0.3340, 0.3301

Tritanomaly

67.6518, 0.3229, 0.3193

Monochromacy



Original Color

67.9165, 0.3298, 0.3334

Achromatopsia

68.6685, 0.3127, 0.3290

Achromatomaly

68.2694, 0.3185, 0.3301

CSS Examples

Text

The CSS property to change the color of the text to Yxy 67.9165, 0.3298, 0.3334 is called "color". The color property can be set on classes, ids or directly on the HTML element.

This example shows how text in the color `rgb(230, 211, 207)` looks like.

```
.text, #text, p{  
    color:rgb(230, 211, 207)  
}
```

If you want to add a text shadow in that color use the text-shadow property, you can generate a text shadow directly with our [CSS Text Shadow Generator](#).

Here you see how black text with a 4 pixel rgb(230, 211, 207) colored shadow looks like.

```
.shadow{ text-shadow: 4px 4px 2px rgb(230, 211, 207) }
```

Border

The CSS property to change the border of an element to Yxy 67.9165, 0.3298, 0.3334 is called "border". The border property can be set on classes, ids or directly on the HTML element.

This example shows the color as border, it can be applied via the CSS property "border" or "border-color".

```
.border, #border, table{ border:4px solid rgb(230, 211, 207) }
```

If only the border color should be changed use the property border-color.

```
.border{ border-color:rgb(230, 211, 207) }
```

If you want to add a box shadow in that color use:

Here you see how a box with a 4 pixel rgb(230, 211, 207) colored shadow looks like.

```
.boxshadow{ -moz-box-shadow:4px 4px 4px  
4px rgb(230, 211, 207); -webkit-box-  
shadow:4px 4px 4px 4px rgb(230, 211, 207);  
box-shadow:4px 4px 4px 4px rgb(230, 211,  
207) }
```


Background

The CSS property to change the background color of an element to Yxy 67.9165, 0.3298, 0.3334 is called "background". The background property can be set on classes, ids or directly on the HTML element.

```
.background, #background, body{  
background: rgb(230, 211, 207) }
```

If only the background color should be changed can be used:

```
.background{ background-color: rgb(230,  
211, 207) }
```

This example shows the color as background, it is applied via the CSS property "background".

To optimize and compress your CSS code, you can use our [online CSS compressor and optimizer](#) based on csstidy. If you want to create a linear or radial gradient as background or border, check our [CSS Gradient Generator](#).

Hey! You found this booklet interesting? Support Converting Colors with the new Membership Option!

The pro membership hides all ads, plus gives you double the colors in the color bucket, and more awesome pro features!

[Learn more, Memberships starting at \\$2.50/m!](#)

**Follow me
on Twitter!**

@ConvertingColor