

Converting Colors

Yxy(68.2432, 0.3318, 0.3253)

Have a look what the booklet for
Yxy(68.2432, 0.3318, 0.3253)
contains.

Yxy(68.3589, 0.3318, 0.3259)	3
Conversions	4
Details	6
Harmonies	12
Previews	24
Color Blindness Simulation	27
CSS Examples	30

Color

Yxy(68.3589, 0.3318, 0.3259)

Conversions

Conversions Part 1

Format	Color
Hex	EDD1D4
RGB	237, 209, 212
RGB Percent	93%, 82%, 83%
CMY	0.0707, 0.1803, 0.1687
CMYK	0.00, 0.12, 0.11, 0.07
HSL	354°, 44%, 87%
HSV	354°, 12%, 93%
XYZ	69.5964, 68.3589, 71.7989
YIQ	217.7140, 15.7250, 6.8690

Conversions

Conversions Part 2

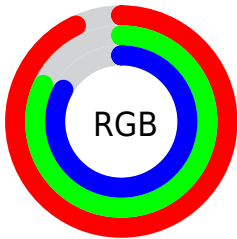
Format	Color
R_{YB}	237, 209, 212
Decimal	15585748
CIE _{Lab}	86.19, 10.21, 2.10
CIE _{LCh}	86, 10.423, 11.634
Yxy	68.3589, 0.3318, 0.3259
Android (android.graphics.Color)	4293775828 (0xFFEDD1D4)
YUV	217.7140, -2.8170, 16.9138
Hunter-Lab	82.6794, 5.5656, 6.3881

Details

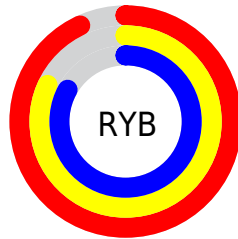
The Yxy color **68.3589, 0.3318, 0.3259** is a light color, and the websafe version is hex **FFCCCC**. A complement of this color would be **80.0439, 0.2964, 0.3321**, and the grayscale version is **69.9136, 0.3127, 0.3290**.

A 20% lighter version of the original color is **100.0000, 0.3127, 0.3290**, and **35.7008, 0.3369, 0.3263** is the 20% darker color. If you saturate the color by 10%, you get **56.5846, 0.3524, 0.3231**, and if you desaturate by 10%, it is **82.0088, 0.3153, 0.3285**.

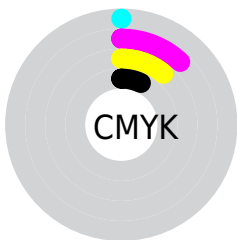
Distribution



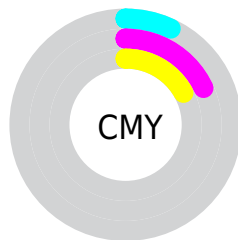
- Red (93%)
- Green (82%)
- Blue (83%)



- Red (93%)
- Yellow (82%)
- Blue (83%)



- Cyan (0%)
- Magenta (12%)
- Yellow (11%)
- Black (7%)





- Cyan (7%)
- Magenta (18%)
- Yellow (17%)

Brightness & Saturation Gradients


These gradients show how the Yxy color 68.3589, 0.3318, 0.3259 changes by changing the brightness by 10 percent. The first figure shows a shift by +10% for each color and the second figure -10%.

Similar to the brightness gradients but the following saturation gradients show a change of the Yxy color 68.3589, 0.3318, 0.3259 by changing the saturation by 10% instead.


 68.3589, 0.3318,
0.3259

 68.3589, 0.3318,
0.3259

454.7666, 0.3228,
0.3274

 50.1898, 0.3339,
0.3255


116.8654, 0.3287,
0.3264

 35.5642, 0.3365,
0.3251


147.9716, 0.3275,
0.3266

 24.0978, 0.3398,
0.3245


184.1590, 0.3264,
0.3268

 15.4062, 0.3442,
0.3237

225.8118, 0.3255,
0.3270

 9.1050, 0.3503,
0.3226

273.3146, 0.3247,
0.3271

 4.8097, 0.3592,
0.3208

327.0518, 0.3240,

 2.1360, 0.3739,

0.3272

0.3179

387.4076, 0.3234,
0.3273

0.6848, 0.4126,
0.3134

0.0000, 0.0000,
0.0000

68.3589, 0.3318,
0.3259

68.3589, 0.3318,
0.3259

56.5846, 0.3524,
0.3231

82.0088, 0.3153,
0.3285

46.5955, 0.3779,
0.3202

96.6960, 0.3021,
0.3296

38.3070, 0.4092,
0.3175

96.7374, 0.3017,
0.3290

31.6243, 0.4466,
0.3152

■ 26.4431, 0.4893,
0.3139

■ 22.6471, 0.5346,
0.3141

■ 20.1025, 0.5775,
0.3164

■ 18.6493, 0.6114,
0.3205

■ 18.0680, 0.6297,
0.3243

Harmonies

Analogous

The Analogous color harmony consists of three colors that are next to each other on the color wheel.



68.3589, 0.3208, 0.3158



68.3589, 0.3318, 0.3259



68.3589, 0.3376, 0.3370

Triad

The Triadic color harmony groups three colors that are evenly spaced from another and form a triangle on the color wheel.



68.3589, 0.3318, 0.3259



68.3589, 0.3172, 0.3500



68.3589, 0.2893, 0.3113

Complementary

The Complementary color scheme is a pair of colors which are on the opposite of each other on the color wheel.



68.3589, 0.3318, 0.3259



80.0439, 0.2964, 0.3321

Split Complementary

Split-complementary colors differ from the complementary color scheme. The scheme consists of three colors, the original color and two neighbors of the complement color.



68.3589, 0.2885, 0.3202



68.3589, 0.3318, 0.3259



68.3589, 0.3044, 0.3428

Square

The Square scheme is like the rectangle color scheme, but the four colors are evenly spaced on the color wheel.



68.3589, 0.3318, 0.3259



68.3589, 0.3291, 0.3512



68.3589, 0.2939, 0.3318



68.3589, 0.2963, 0.3074

Rectangle

The Rectangle color scheme consists of four colors that form a rectangle on the color wheel.



68.3589, 0.3318, 0.3259



68.3589, 0.3377, 0.3436



68.3589, 0.2939, 0.3318



68.3589, 0.2883, 0.3138

Sweetspot

The Sweet Spot groups the original color and five complimentary colors.



68.3619, 0.3318, 0.3259



93.0903, 0.3187, 0.3280



69.1657, 0.3117, 0.2998



19.6558, 0.3198, 0.3278



0.0000, 0.0000, 0.0000



21.4041, 0.3127, 0.3290

Same Dimension

The Same Dimension uses a secret algorithm to generate beautiful new colors.



68.3619, 0.3318, 0.3259



77.4116, 0.3361, 0.3253



73.6476, 0.3325, 0.3404



15.0800, 0.3276, 0.3265



9.8774, 0.6274, 0.3230



0.7843, 0.6002, 0.3080

Inverse Universe

The Inverse Universe completely reimagines the original color for something new.



68.3619, 0.3318, 0.3259



77.4116, 0.3361, 0.3253



74.1994, 0.2944, 0.3173



15.0800, 0.3276, 0.3265



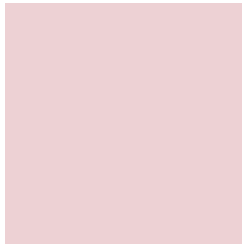
9.8774, 0.6274, 0.3230



0.7843, 0.6002, 0.3080

Previews

White Background



This preview shows how the Yxy color 68.3589, 0.3318, 0.3259 looks on a white background.

Color Contrast Check

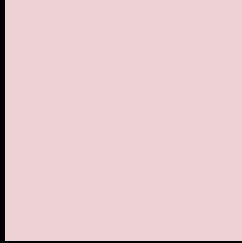
Large Text (above 18pt) WCAG AA × Fail

Any Text WCAG AA × Fail

Large Text (above 18pt) WCAG AAA × Fail

Any Text WCAG AAA × Fail

Black Background



This preview shows how the Yxy color 68.3589, 0.3318, 0.3259 looks on a black background.

Color Contrast Check

Large Text (above 18pt) WCAG AA ✓ Pass

Any Text WCAG AA ✓ Pass

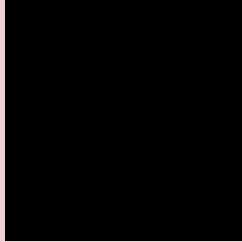
Large Text (above 18pt) WCAG AAA ✓ Pass

Any Text WCAG AAA ✓ Pass

If you want to check with other color combinations, try the [Color Contrast Checker](#).

Yxy 68.3589, 0.3318, 0.3259

Background



This preview shows how black text looks on a background with the Yxy color 68.3589, 0.3318, 0.3259.



This preview shows how white text looks on a background with the Yxy color 68.3589, 0.3318, 0.3259.

Color Blindness Simulation

Color vision deficiency is a very complex topic, and I could not describe the different causes any better than Wikipedia does, so if you want to learn more, you should check out their [article about color blindness](#).

Dichromacy



Original Color

68.3589, 0.3318, 0.3259

Protanopia

68.7228, 0.3164, 0.3290

Deuteranopia

68.5315, 0.3326, 0.3259



Tritanopia

68.3041, 0.3256, 0.3122

Trichromacy



Original Color

68.3589, 0.3318, 0.3259

Protanomaly

68.6123, 0.3216, 0.3279

Deuteranomaly

68.5315, 0.3326, 0.3259

Tritanomaly

68.4034, 0.3276, 0.3174

Monochromacy



Original Color

68.3589, 0.3318, 0.3259

Achromatopsia

70.1102, 0.3127, 0.3290

Achromatomaly

69.5663, 0.3194, 0.3279

CSS Examples

Text

The CSS property to change the color of the text to Yxy 68.3589, 0.3318, 0.3259 is called "color". The color property can be set on classes, ids or directly on the HTML element.

This example shows how text in the color `rgb(237, 209, 212)` looks like.

```
.text, #text, p{  
    color:rgb(237, 209, 212)  
}
```

If you want to add a text shadow in that color use the text-shadow property, you can generate a text shadow directly with our [CSS Text Shadow Generator](#).

Here you see how black text with a 4 pixel rgb(237, 209, 212) colored shadow looks like.

```
.shadow{ text-shadow: 4px 4px 2px rgb(237, 209, 212) }
```

Border

The CSS property to change the border of an element to Yxy 68.3589, 0.3318, 0.3259 is called "border". The border property can be set on classes, ids or directly on the HTML element.

This example shows the color as border, it can be applied via the CSS property "border" or "border-color".

```
.border, #border, table{ border:4px solid rgb(237, 209, 212) }
```

If only the border color should be changed use the property border-color.

```
.border{ border-color:rgb(237, 209, 212) }
```

If you want to add a box shadow in that color use:

Here you see how a box with a 4 pixel rgb(237, 209, 212) colored shadow looks like.

```
.boxshadow{ -moz-box-shadow:4px 4px 4px  
4px rgb(237, 209, 212); -webkit-box-  
shadow:4px 4px 4px 4px rgb(237, 209, 212);  
box-shadow:4px 4px 4px 4px rgb(237, 209,  
212) }
```


Background

The CSS property to change the background color of an element to Yxy 68.3589, 0.3318, 0.3259 is called "background". The background property can be set on classes, ids or directly on the HTML element.

```
.background, #background, body{  
background: rgb(237, 209, 212) }
```

If only the background color should be changed can be used:

```
.background{ background-color: rgb(237,  
209, 212) }
```

This example shows the color as background, it is applied via the CSS property "background".

To optimize and compress your CSS code, you can use our [online CSS compressor and optimizer](#) based on csstidy. If you want to create a linear or radial gradient as background or border, check our [CSS Gradient Generator](#).

Hey! You found this booklet interesting? Support Converting Colors with the new Membership Option!

The pro membership hides all ads, plus gives you double the colors in the color bucket, and more awesome pro features!

[Learn more, Memberships starting at \\$2.50/m!](#)

**Follow me
on Twitter!**

@ConvertingColor