

# Converting Colors

$Yxy(68.2448, 0.3502, 0.3495)$

Have a look what the booklet for  
Yxy(68.2448, 0.3502, 0.3495)  
contains.

<b>Yxy(68.3800, 0.3495, 0.3495)</b> .....	3
<b>Conversions</b> .....	4
<b>Details</b> .....	6
<b>Harmonies</b> .....	12
<b>Previews</b> .....	24
<b>Color Blindness Simulation</b> .....	27
<b>CSS Examples</b> .....	30

# Color

**Yxy(68.3800, 0.3495, 0.3495)**

# Conversions

## Conversions Part 1

Format	Color
Hex	F0D2BF
RGB	240, 210, 191
RGB Percent	94%, 82%, 75%
CMY	0.0589, 0.1764, 0.2509
CMYK	0.00, 0.12, 0.20, 0.06
HSL	23°, 62%, 85%
HSV	23°, 20%, 94%
XYZ	68.3800, 68.3800, 58.8909
YIQ	216.8040, 23.9790, 0.4510

# Conversions

## Conversions Part 2

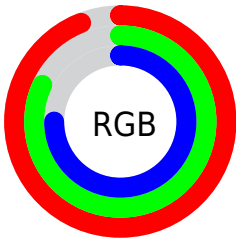
<b>Format</b>	<b>Color</b>
<a href="#">RYB</a>	<a href="#">240, 222, 191</a>
Decimal	<a href="#">15782591</a>
CIELab	<a href="#">86.20, 7.52, 13.25</a>
CIELCh	<a href="#">86, 15.235, 60.412</a>
Yxy	<a href="#">68.3800, 0.3495, 0.3495</a>
Android (android.graphics.Color)	<a href="#">4293972671</a> ( <a href="#">0xFFFF0D2BF</a> )
YUV	<a href="#">216.8040, -12.7214, 20.3429</a>
Hunter-Lab	<a href="#">82.6922, 2.8942, 15.6600</a>

# Details

The Yxy color **68.3800, 0.3495, 0.3495** is a light color, and the websafe version is hex **FFCCCC**. A complement of this color would be **69.0658, 0.2808, 0.3076**, and the grayscale version is **69.3238, 0.3127, 0.3290**.

A 20% lighter version of the original color is **99.4954, 0.3173, 0.3367**, and **35.8023, 0.3585, 0.3542** is the 20% darker color. If you saturate the color by 10%, you get **60.4897, 0.3721, 0.3602**, and if you desaturate by 10%, it is **77.1150, 0.3300, 0.3391**.

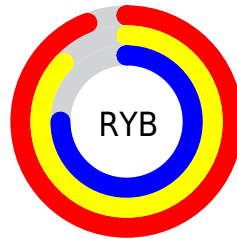
# Distribution



Red (94%)

Green (82%)

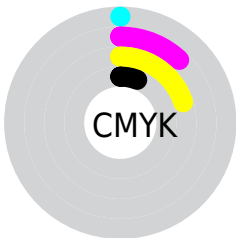
Blue (75%)



Red (94%)

Yellow (87%)

Blue (75%)

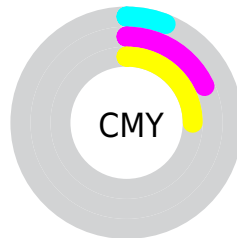


Cyan (0%)

Magenta (12%)

Yellow (20%)

Black (6%)



Cyan (6%)

Magenta (18%)


Yellow (25%)

# Brightness & Saturation Gradients

These gradients show how the Yxy color 68.3800, 0.3495, 0.3495 changes by changing the brightness by 10 percent. The first figure shows a shift by +10% for each color and the second figure -10%.


Similar to the brightness gradients but the following saturation gradients show a change of the Yxy color 68.3800, 0.3495, 0.3495 by changing the saturation by 10% instead.





 68.3800, 0.3495,  
0.3495

 68.3800, 0.3495,  
0.3495


454.8412, 0.3322,  
0.3401

 50.2069, 0.3535,  
0.3516


 116.8956, 0.3434,  
0.3463

 35.5779, 0.3585,  
0.3542


148.0069, 0.3411,  
0.3450

 24.1083, 0.3649,  
0.3574


184.1998, 0.3391,  
0.3439

 15.4140, 0.3734,  
0.3616

225.8586, 0.3373,  
0.3430

 9.1105, 0.3851,  
0.3671

273.3678, 0.3358,  
0.3421

 4.8133, 0.4021,  
0.3747

327.1117, 0.3345,

 2.1381, 0.4293,

0.3414

387.4747, 0.3333,  
0.3407

0.3855

0.6859, 0.5492,  
0.4508

0.0000, 0.0000,  
0.0000

68.3800, 0.3495,  
0.3495

68.3800, 0.3495,  
0.3495

60.4897, 0.3721,  
0.3602

77.1150, 0.3300,  
0.3391

53.4085, 0.3981,  
0.3708

86.7103, 0.3133,  
0.3294

47.1118, 0.4273,  
0.3807

96.6665, 0.3035,  
0.3281

41.5702, 0.4592,  
0.3887

97.2607, 0.3035,  
0.3290

■ 36.7521, 0.4923,  
0.3937

■ 32.6232, 0.5246,  
0.3944

■ 29.1453, 0.5532,  
0.3898

■ 26.3729, 0.5758,  
0.3810

# Harmonies

## Analogous

The Analogous color harmony consists of three colors that are next to each other on the color wheel.



68.3800, 0.3472, 0.3344



68.3800, 0.3495, 0.3495



68.3800, 0.3417, 0.3597

# Triad

The Triadic color harmony groups three colors that are evenly spaced from another and form a triangle on the color wheel.



68.3800, 0.3495, 0.3495



68.3800, 0.2903, 0.3394



68.3800, 0.2987, 0.2983

# Complementary

The Complementary color scheme is a pair of colors which are on the opposite of each other on the color wheel.



68.3800, 0.3495, 0.3495



69.0658, 0.2808, 0.3076

# Split Complementary

Split-complementary colors differ from the complementary color scheme. The scheme consists of three colors, the original color and two neighbors of the complement color.



68.3800, 0.2841, 0.2987



68.3800, 0.3495, 0.3495



68.3800, 0.2794, 0.3219

# Square

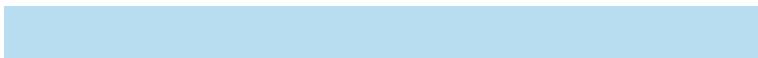
The Square scheme is like the rectangle color scheme, but the four colors are evenly spaced on the color wheel.



68.3800, 0.3495, 0.3495



68.3800, 0.3073, 0.3543



68.3800, 0.2772, 0.3071



68.3800, 0.3174, 0.3055



# Rectangle

The Rectangle color scheme consists of four colors that form a rectangle on the color wheel.



68.3800, 0.3495, 0.3495



68.3800, 0.3319, 0.3621



68.3800, 0.2772, 0.3071



68.3800, 0.2932, 0.2975

# Sweetspot

The Sweet Spot groups the original color and five complimentary colors.



68.3831, 0.3495, 0.3495



93.2249, 0.3224, 0.3348



61.0191, 0.3293, 0.2970



19.8008, 0.3235, 0.3354



0.0000, 0.0000, 0.0000



21.4041, 0.3127, 0.3290

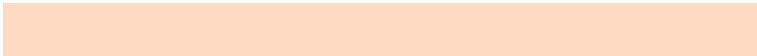


# Same Dimension

The Same Dimension uses a secret algorithm to generate beautiful new colors.



68.3831, 0.3495, 0.3495



75.0566, 0.3574, 0.3534



81.2778, 0.3446, 0.3743



16.7648, 0.3284, 0.3382



14.6800, 0.5729, 0.3833



1.4088, 0.5485, 0.4027

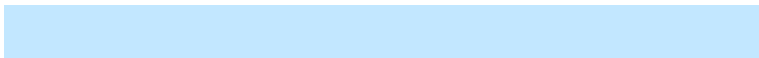


# Inverse Universe

The Inverse Universe completely reimagines the original color for something new.



69.0658, 0.2808, 0.3076



75.9539, 0.2750, 0.3032



57.1751, 0.2790, 0.2793



16.8389, 0.2980, 0.3196



15.1086, 0.1880, 0.1966

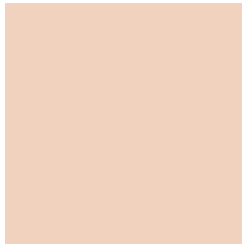


1.4494, 0.1933, 0.2159



# Previews

## White Background



This preview shows how the Yxy color 68.3800, 0.3495, 0.3495 looks on a white background.

## Color Contrast Check

Large Text (above 18pt) WCAG AA × Fail

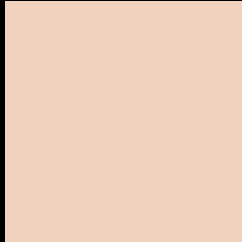
Any Text WCAG AA × Fail

Large Text (above 18pt) WCAG AAA × Fail

Any Text WCAG AAA × Fail



# Black Background



This preview shows how the Yxy color 68.3800, 0.3495, 0.3495 looks on a black background.

## Color Contrast Check

Large Text (above 18pt) WCAG AA ✓ Pass

Any Text WCAG AA ✓ Pass

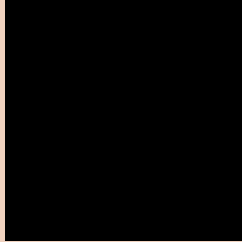
Large Text (above 18pt) WCAG AAA ✓ Pass

Any Text WCAG AAA ✓ Pass

If you want to check with other color combinations, try the [Color Contrast Checker](#).

**Yxy 68.3800, 0.3495, 0.3495**

## **Background**



This preview shows how black text looks on a background with the Yxy color 68.3800, 0.3495, 0.3495.



This preview shows how white text looks on a background with the Yxy color 68.3800, 0.3495, 0.3495.

# Color Blindness Simulation

Color vision deficiency is a very complex topic, and I could not describe the different causes any better than Wikipedia does, so if you want to learn more, you should check out their [article about color blindness](#).

## Dichromacy



### Original Color

68.3800, 0.3495, 0.3495

### Protanopia

68.5035, 0.3348, 0.3523

### Deuteranopia

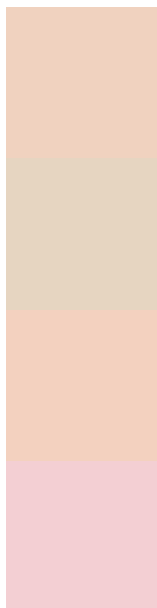
68.2858, 0.3539, 0.3472



## Tritanopia

68.6496, 0.3302, 0.3124

# Trichromacy



## Original Color

68.3800, 0.3495, 0.3495

## Protanomaly

68.2617, 0.3397, 0.3510

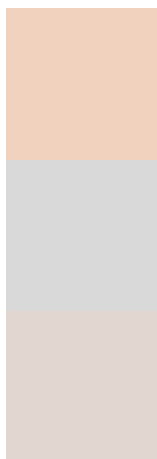
## Deuteranomaly

68.4172, 0.3521, 0.3483

## Tritanomaly

68.3835, 0.3374, 0.3249

# Monochromacy



## Original Color

68.3800, 0.3495, 0.3495

## Achromatopsia

69.3872, 0.3127, 0.3290

## Achromatomaly

68.6548, 0.3250, 0.3356

# CSS Examples

## Text

The CSS property to change the color of the text to Yxy 68.3800, 0.3495, 0.3495 is called "color". The color property can be set on classes, ids or directly on the HTML element.

This example shows how text in the color `rgb(240, 210, 191)` looks like.

```
.text, #text, p{  
    color:rgb(240, 210, 191)  
}
```

If you want to add a text shadow in that color use the text-shadow property, you can generate a text shadow directly with our [CSS Text Shadow Generator](#).

Here you see how black text with a 4 pixel rgb(240, 210, 191) colored shadow looks like.

```
.shadow{ text-shadow: 4px 4px 2px rgb(240, 210, 191) }
```

## Border

The CSS property to change the border of an element to Yxy 68.3800, 0.3495, 0.3495 is called "border". The border property can be set on classes, ids or directly on the HTML element.

This example shows the color as border, it can be applied via the CSS property "border" or "border-color".

```
.border, #border, table{ border:4px solid rgb(240, 210, 191) }
```

If only the border color should be changed use the property `border-color`.

```
.border{ border-color:rgb(240, 210, 191) }
```

If you want to add a box shadow in that color use:

Here you see how a box with a 4 pixel `rgb(240, 210, 191)` colored shadow looks like.

```
.boxshadow{ -moz-box-shadow:4px 4px 4px  
4px rgb(240, 210, 191); -webkit-box-  
shadow:4px 4px 4px 4px rgb(240, 210, 191);  
box-shadow:4px 4px 4px 4px rgb(240, 210,  
191) }
```



# Background

The CSS property to change the background color of an element to Yxy 68.3800, 0.3495, 0.3495 is called "background". The background property can be set on classes, ids or directly on the HTML element.

```
.background, #background, body{  
background: rgb(240, 210, 191) }
```

If only the background color should be changed can be used:

```
.background{ background-color: rgb(240,  
210, 191) }
```

This example shows the color as background, it is applied via the CSS property "background".

To optimize and compress your CSS code, you can use our [online CSS compressor and optimizer](#) based on csstidy. If you want to create a linear or radial gradient as background or border, check our [CSS Gradient Generator](#).

Hey! You found this booklet interesting? Support Converting Colors with the new Membership Option!

The pro membership hides all ads, plus gives you double the colors in the color bucket, and more awesome pro features!

**[Learn more, Memberships starting at \\$2.50/m!](#)**

**Follow me  
on Twitter!**

@ConvertingColor