

Converting Colors

$Yxy(68.2586, 0.3438, 0.3455)$

Have a look what the booklet for
Yxy(68.2586, 0.3438, 0.3455)
contains.

Yxy(68.0378, 0.3442, 0.3453)	3
Conversions	4
Details	6
Harmonies	12
Previews	24
Color Blindness Simulation	27
CSS Examples	30

Color

Yxy(68.0378, 0.3442, 0.3453)

Conversions

Conversions Part 1

Format	Color
Hex	EDD2C3
RGB	237, 210, 195
RGB Percent	93%, 82%, 76%
CMY	0.0706, 0.1764, 0.2353
CMYK	0.00, 0.11, 0.18, 0.07
HSL	21°, 54%, 85%
HSV	21°, 18%, 93%
XYZ	67.8211, 68.0378, 61.1808
YIQ	216.3630, 20.9070, 1.0590

Conversions

Conversions Part 2

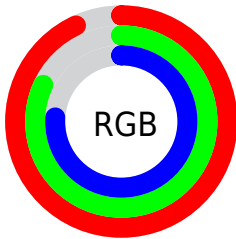
Format	Color
R _Y B	237, 218, 195
Decimal	15585987
CIE Lab	86.03, 7.03, 10.87
CIE LCh	86, 12.946, 57.088
Yxy	68.0378, 0.3442, 0.3453
Android (android.graphics.Color)	4293776067 (0xFFEDD2C3)
YUV	216.3630, -10.5320, 18.0986
Hunter-Lab	82.4850, 2.4179, 13.7629

Details

The Yxy color **68.0378, 0.3442, 0.3453** is a light color, and the websafe version is hex **FFCCCC**. A complement of this color would be **69.9496, 0.2852, 0.3121**, and the grayscale version is **68.9936, 0.3127, 0.3290**.

A 20% lighter version of the original color is **99.8083, 0.3144, 0.3319**, and **35.5238, 0.3524, 0.3502** is the 20% darker color. If you saturate the color by 10%, you get **59.8868, 0.3663, 0.3551**, and if you desaturate by 10%, it is **77.0806, 0.3253, 0.3359**.

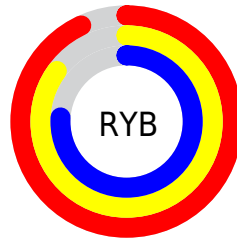
Distribution



Red (93%)

Green (82%)

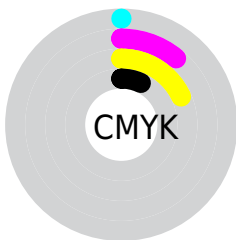
Blue (76%)



Red (93%)

Yellow (85%)

Blue (76%)

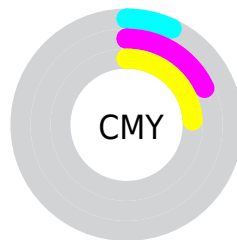


Cyan (0%)

Magenta (11%)

Yellow (18%)

Black (7%)



Cyan (7%)


Magenta (18%)


Yellow (24%)

Brightness & Saturation Gradients


These gradients show how the Yxy color 68.0378, 0.3442, 0.3453 changes by changing the brightness by 10 percent. The first figure shows a shift by +10% for each color and the second figure -10%.

Similar to the brightness gradients but the following saturation gradients show a change of the Yxy color 68.0378, 0.3442, 0.3453 by changing the saturation by 10% instead.


 68.0378, 0.3442,
0.3453

 68.0378, 0.3442,
0.3453

453.6299, 0.3294,
0.3378

 49.9285, 0.3477,
0.3470

116.4062, 0.3390,
0.3427

 35.3566, 0.3520,
0.3490


147.4341, 0.3370,
0.3417

 23.9377, 0.3575,
0.3516


183.5370, 0.3353,
0.3409

 15.2874, 0.3648,
0.3550

225.0992, 0.3338,
0.3401

 9.0213, 0.3748,
0.3595

272.5053, 0.3325,
0.3394

 4.7551, 0.3897,
0.3657

326.1395, 0.3313,

 2.1043, 0.4136,

0.3388

0.3749

386.3862, 0.3303,
0.3383

0.6670, 0.5471,
0.4529

0.0000, 0.0000,
0.0000

68.0378, 0.3442,
0.3453

68.0378, 0.3442,
0.3453

59.8868, 0.3663,
0.3551

77.0806, 0.3253,
0.3359

52.5907, 0.3919,
0.3650

87.0327, 0.3093,
0.3271

46.1230, 0.4211,
0.3743

96.7448, 0.3017,
0.3290

40.4525, 0.4535,
0.3822

■ 35.5458, 0.4879,
0.3875

■ 31.3667, 0.5221,
0.3889

■ 27.8753, 0.5534,
0.3853

■ 25.0251, 0.5788,
0.3766

■ 24.4569, 0.5841,
0.3744

Harmonies

Analogous

The Analogous color harmony consists of three colors that are next to each other on the color wheel.



68.0378, 0.3412, 0.3322



68.0378, 0.3442, 0.3453



68.0378, 0.3385, 0.3545

Triad

The Triadic color harmony groups three colors that are evenly spaced from another and form a triangle on the color wheel.



68.0378, 0.3442, 0.3453



68.0378, 0.2950, 0.3395



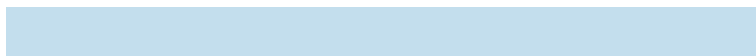
68.0378, 0.2992, 0.3024

Complementary

The Complementary color scheme is a pair of colors which are on the opposite of each other on the color wheel.



68.0378, 0.3442, 0.3453



69.9496, 0.2852, 0.3121

Split Complementary

Split-complementary colors differ from the complementary color scheme. The scheme consists of three colors, the original color and two neighbors of the complement color.



68.0378, 0.2873, 0.3037



68.0378, 0.3442, 0.3453



68.0378, 0.2850, 0.3247

Square

The Square scheme is like the rectangle color scheme, but the four colors are evenly spaced on the color wheel.



68.0378, 0.3442, 0.3453



68.0378, 0.3099, 0.3515



68.0378, 0.2822, 0.3116



68.0378, 0.3149, 0.3079

Rectangle

The Rectangle color scheme consists of four colors that form a rectangle on the color wheel.



68.0378, 0.3442, 0.3453



68.0378, 0.3306, 0.3570



68.0378, 0.2822, 0.3116



68.0378, 0.2946, 0.3021

Sweetspot

The Sweet Spot groups the original color and five complimentary colors.



68.0409, 0.3442, 0.3453



94.0896, 0.3207, 0.3334



62.3203, 0.3257, 0.3000



19.9660, 0.3219, 0.3341



0.0000, 0.0000, 0.0000



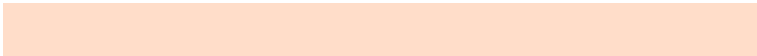
21.4041, 0.3127, 0.3290

Same Dimension

The Same Dimension uses a secret algorithm to generate beautiful new colors.



68.0409, 0.3442, 0.3453



76.9955, 0.3512, 0.3486



78.9283, 0.3405, 0.3668



15.9351, 0.3284, 0.3375



13.5778, 0.5811, 0.3768



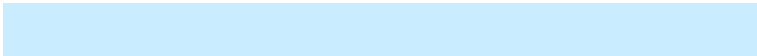
1.2424, 0.5547, 0.3978

Inverse Universe

The Inverse Universe completely reimagines the original color for something new.



69.9496, 0.2852, 0.3121



79.6097, 0.2799, 0.3086



59.6246, 0.2839, 0.2882



16.1635, 0.2981, 0.3204



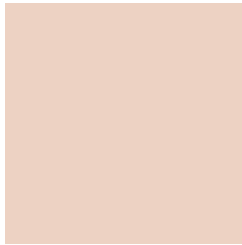
15.9064, 0.1910, 0.2077



1.4297, 0.1962, 0.2264

Previews

White Background



This preview shows how the Yxy color 68.0378, 0.3442, 0.3453 looks on a white background.

Color Contrast Check

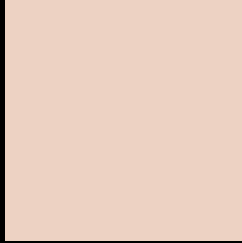
Large Text (above 18pt) WCAG AA × Fail

Any Text WCAG AA × Fail

Large Text (above 18pt) WCAG AAA × Fail

Any Text WCAG AAA × Fail

Black Background



This preview shows how the Yxy color 68.0378, 0.3442, 0.3453 looks on a black background.

Color Contrast Check

Large Text (above 18pt) WCAG AA ✓ Pass

Any Text WCAG AA ✓ Pass

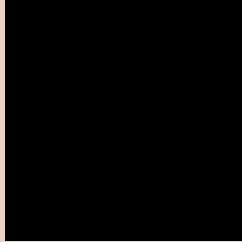
Large Text (above 18pt) WCAG AAA ✓ Pass

Any Text WCAG AAA ✓ Pass

If you want to check with other color combinations, try the [Color Contrast Checker](#).

Yxy 68.0378, 0.3442, 0.3453

Background



This preview shows how black text looks on a background with the Yxy color 68.0378, 0.3442, 0.3453.



This preview shows how white text looks on a background with the Yxy color 68.0378, 0.3442, 0.3453.

Color Blindness Simulation

Color vision deficiency is a very complex topic, and I could not describe the different causes any better than Wikipedia does, so if you want to learn more, you should check out their [article about color blindness](#).

Dichromacy



Original Color

68.0378, 0.3442, 0.3453

Protanopia

68.3201, 0.3311, 0.3491

Deuteranopia

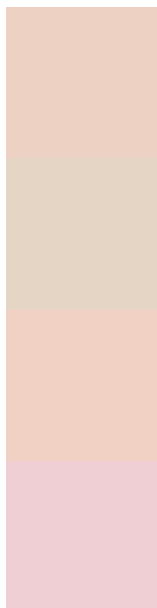
68.1066, 0.3493, 0.3429



Tritanopia

67.9418, 0.3272, 0.3122

Trichromacy



Original Color

68.0378, 0.3442, 0.3453

Protanomaly

68.0680, 0.3360, 0.3478

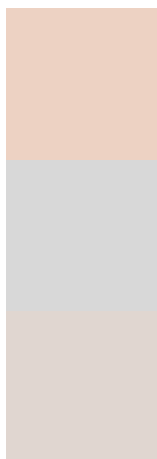
Deuteranomaly

68.2418, 0.3475, 0.3441

Tritanomaly

67.7298, 0.3336, 0.3237

Monochromacy



Original Color

68.0378, 0.3442, 0.3453

Achromatopsia

68.6685, 0.3127, 0.3290

Achromatomaly

68.4945, 0.3243, 0.3356

CSS Examples

Text

The CSS property to change the color of the text to Yxy 68.0378, 0.3442, 0.3453 is called "color". The color property can be set on classes, ids or directly on the HTML element.

This example shows how text in the color `rgb(237, 210, 195)` looks like.

```
.text, #text, p{  
    color:rgb(237, 210, 195)  
}
```

If you want to add a text shadow in that color use the text-shadow property, you can generate a text shadow directly with our [CSS Text Shadow Generator](#).

Here you see how black text with a 4 pixel rgb(237, 210, 195) colored shadow looks like.

```
.shadow{ text-shadow: 4px 4px 2px rgb(237, 210, 195) }
```

Border

The CSS property to change the border of an element to Yxy 68.0378, 0.3442, 0.3453 is called "border". The border property can be set on classes, ids or directly on the HTML element.

This example shows the color as border, it can be applied via the CSS property "border" or "border-color".

```
.border, #border, table{ border:4px solid rgb(237, 210, 195) }
```

If only the border color should be changed use the property border-color.

```
.border{ border-color:rgb(237, 210, 195) }
```

If you want to add a box shadow in that color use:

Here you see how a box with a 4 pixel rgb(237, 210, 195) colored shadow looks like.

```
.boxshadow{ -moz-box-shadow:4px 4px 4px  
4px rgb(237, 210, 195); -webkit-box-  
shadow:4px 4px 4px 4px rgb(237, 210, 195);  
box-shadow:4px 4px 4px 4px rgb(237, 210,  
195) }
```


Background

The CSS property to change the background color of an element to Yxy 68.0378, 0.3442, 0.3453 is called "background". The background property can be set on classes, ids or directly on the HTML element.

```
.background, #background, body{  
background: rgb(237, 210, 195) }
```

If only the background color should be changed can be used:

```
.background{ background-color: rgb(237,  
210, 195) }
```

This example shows the color as background, it is applied via the CSS property "background".

To optimize and compress your CSS code, you can use our [online CSS compressor and optimizer](#) based on csstidy. If you want to create a linear or radial gradient as background or border, check our [CSS Gradient Generator](#).

Hey! You found this booklet interesting? Support Converting Colors with the new Membership Option!

The pro membership hides all ads, plus gives you double the colors in the color bucket, and more awesome pro features!

[Learn more, Memberships starting at \\$2.50/m!](#)

**Follow me
on Twitter!**

@ConvertingColor