

# Converting Colors

$Yxy(68.2997, 0.3464, 0.3493)$

Have a look what the booklet for  
Yxy(68.2997, 0.3464, 0.3493)  
contains.

<b>Yxy(68.3988, 0.3462, 0.3496)</b> .....	3
<b>Conversions</b> .....	4
<b>Details</b> .....	6
<b>Harmonies</b> .....	12
<b>Previews</b> .....	24
<b>Color Blindness Simulation</b> .....	27
<b>CSS Examples</b> .....	30

# Color

**Yxy(68.3988, 0.3462, 0.3496)**

# Conversions

## Conversions Part 1

<b>Format</b>	<b>Color</b>
Hex	EDD3C0
RGB	237, 211, 192
RGB Percent	93%, 83%, 75%
CMY	0.0706, 0.1725, 0.2470
CMYK	0.00, 0.11, 0.19, 0.07
HSL	25°, 56%, 84%
HSV	25°, 19%, 93%
XYZ	67.7336, 68.3988, 59.5163
YIQ	216.6080, 21.5950, -0.3970

# Conversions

## Conversions Part 2

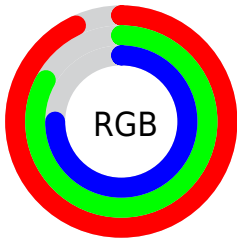
Format	Color
RYB	237, 225, 192
Decimal	15586240
CIELab	86.21, 6.07, 12.69
CIELCh	86, 14.065, 64.451
Yxy	68.3988, 0.3462, 0.3496
Android (android.graphics.Color)	4293776320 (0xFFEDD3C0)
YUV	216.6080, -12.1317, 17.8838
Hunter-Lab	82.7036, 1.4589, 15.2254

# Details

The Yxy color **68.3988, 0.3462, 0.3496** is a light color, and the websafe version is hex **FFCCCC**. A complement of this color would be **67.4726, 0.2830, 0.3075**, and the grayscale version is **69.1814, 0.3127, 0.3290**.

A 20% lighter version of the original color is **99.5573, 0.3168, 0.3357**, and **35.8018, 0.3541, 0.3544** is the 20% darker color. If you saturate the color by 10%, you get **60.9164, 0.3679, 0.3612**, and if you desaturate by 10%, it is **76.6363, 0.3274, 0.3385**.

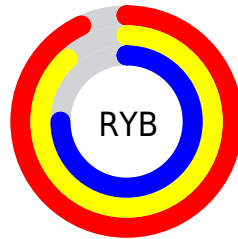
# Distribution



Red (93%)

Green (83%)

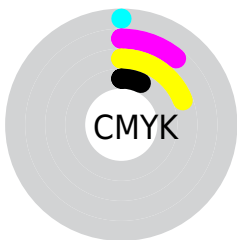
Blue (75%)



Red (93%)

Yellow (88%)

Blue (75%)

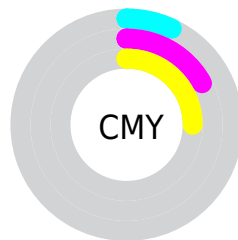


Cyan (0%)

Magenta (11%)

Yellow (19%)

Black (7%)



Cyan (7%)

Magenta (17%)

Yellow (25%)

# Brightness & Saturation Gradients

These gradients show how the Yxy color 68.3988, 0.3462, 0.3496 changes by changing the brightness by 10 percent. The first figure shows a shift by +10% for each color and the second figure -10%.


Similar to the brightness gradients but the following saturation gradients show a change of the Yxy color 68.3988, 0.3462, 0.3496 by changing the saturation by 10% instead.



 68.3988, 0.3462,  
0.3496

 68.3988, 0.3462,  
0.3496


454.9077, 0.3304,  
0.3401

 50.2222, 0.3499,  
0.3517


 116.9225, 0.3407,  
0.3463

 35.5900, 0.3544,  
0.3544


148.0384, 0.3386,  
0.3451

 24.1177, 0.3602,  
0.3577


184.2362, 0.3367,  
0.3440

 15.4210, 0.3679,  
0.3620

225.9003, 0.3351,  
0.3430

 9.1154, 0.3785,  
0.3677

273.4151, 0.3337,  
0.3422

 4.8165, 0.3940,  
0.3757

327.1650, 0.3325,

 2.1400, 0.4187,

0.3414

0.3875

387.5344, 0.3314,  
0.3407

0.6870, 0.5383,  
0.4617

0.0000, 0.0000,  
0.0000

68.3988, 0.3462,  
0.3496

68.3988, 0.3462,  
0.3496

60.9164, 0.3679,  
0.3612

76.6363, 0.3274,  
0.3385

54.1575, 0.3927,  
0.3727

85.6411, 0.3112,  
0.3280

48.1014, 0.4205,  
0.3836

94.9023, 0.3017,  
0.3261

42.7229, 0.4507,  
0.3928

96.7430, 0.3017,  
0.3290

■ 37.9951, 0.4821,  
0.3991

■ 33.8887, 0.5129,  
0.4012

■ 30.3713, 0.5407,  
0.3980

■ 27.4020, 0.5637,  
0.3898

■ 27.1243, 0.5660,  
0.3888

# Harmonies

## Analogous

The Analogous color harmony consists of three colors that are next to each other on the color wheel.



68.3988, 0.3453, 0.3361



68.3988, 0.3462, 0.3496



68.3988, 0.3378, 0.3581

# Triad

The Triadic color harmony groups three colors that are evenly spaced from another and form a triangle on the color wheel.



68.3988, 0.3462, 0.3496



68.3988, 0.2903, 0.3365



68.3988, 0.3020, 0.3011

# Complementary

The Complementary color scheme is a pair of colors which are on the opposite of each other on the color wheel.



68.3988, 0.3462, 0.3496



67.4726, 0.2830, 0.3075

# Split Complementary

Split-complementary colors differ from the complementary color scheme. The scheme consists of three colors, the original color and two neighbors of the complement color.



68.3988, 0.2878, 0.3005



68.3988, 0.3462, 0.3496



68.3988, 0.2812, 0.3205

# Square

The Square scheme is like the rectangle color scheme, but the four colors are evenly spaced on the color wheel.



68.3988, 0.3462, 0.3496



68.3988, 0.3054, 0.3508



68.3988, 0.2803, 0.3074



68.3988, 0.3194, 0.3086



# Rectangle

The Rectangle color scheme consists of four colors that form a rectangle on the color wheel.



68.3988, 0.3462, 0.3496



68.3988, 0.3283, 0.3595



68.3988, 0.2803, 0.3074



68.3988, 0.2967, 0.3001

# Sweetspot

The Sweet Spot groups the original color and five complimentary colors.



68.4019, 0.3462, 0.3496



93.5413, 0.3223, 0.3353



60.7895, 0.3291, 0.3010



19.8755, 0.3234, 0.3360



0.0000, 0.0000, 0.0000



21.4041, 0.3127, 0.3290

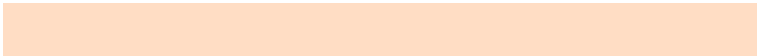


# Same Dimension

The Same Dimension uses a secret algorithm to generate beautiful new colors.



68.4019, 0.3462, 0.3496



77.0308, 0.3548, 0.3543



80.2260, 0.3420, 0.3725



16.0991, 0.3282, 0.3390



15.0572, 0.5631, 0.3911



1.3691, 0.5386, 0.4106

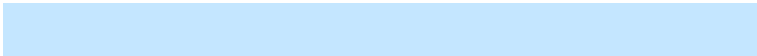


# Inverse Universe

The Inverse Universe completely reimagines the original color for something new.



67.4726, 0.2830, 0.3075



75.7319, 0.2764, 0.3022



56.7019, 0.2815, 0.2814



15.9947, 0.2981, 0.3188



13.3656, 0.1847, 0.1848

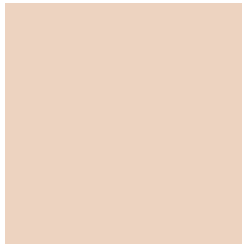


1.2393, 0.1907, 0.2067



# Previews

## White Background



This preview shows how the Yxy color 68.3988, 0.3462, 0.3496 looks on a white background.

## Color Contrast Check

Large Text (above 18pt) WCAG AA × Fail

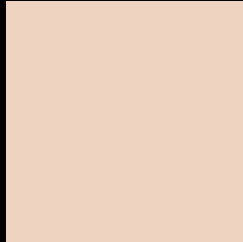
Any Text WCAG AA × Fail

Large Text (above 18pt) WCAG AAA × Fail

Any Text WCAG AAA × Fail



# Black Background



This preview shows how the Yxy color 68.3988, 0.3462, 0.3496 looks on a black background.

## Color Contrast Check

Large Text (above 18pt) WCAG AA ✓ Pass

Any Text WCAG AA ✓ Pass

Large Text (above 18pt) WCAG AAA ✓ Pass

Any Text WCAG AAA ✓ Pass

If you want to check with other color combinations, try the [Color Contrast Checker](#).

**Yxy 68.3988, 0.3462, 0.3496**

## Background



This preview shows how black text looks on a background with the Yxy color 68.3988, 0.3462, 0.3496.



This preview shows how white text looks on a background with the Yxy color 68.3988, 0.3462, 0.3496.

# Color Blindness Simulation

Color vision deficiency is a very complex topic, and I could not describe the different causes any better than Wikipedia does, so if you want to learn more, you should check out their [article about color blindness](#).

## Dichromacy



### Original Color

68.3988, 0.3462, 0.3496

### Protanopia

68.5035, 0.3348, 0.3523

### Deuteranopia

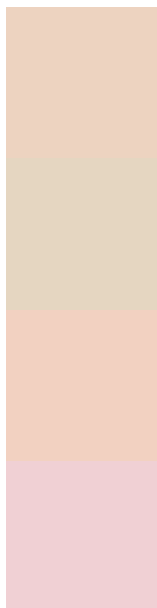
68.3745, 0.3524, 0.3450



## Tritanopia

68.6541, 0.3271, 0.3123

# Trichromacy



## Original Color

68.3988, 0.3462, 0.3496

## Protanomaly

68.6014, 0.3387, 0.3522

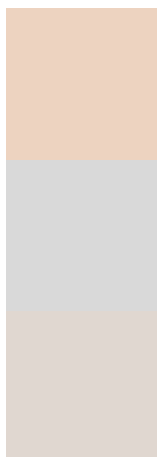
## Deuteranomaly

68.3284, 0.3498, 0.3462

## Tritanomaly

68.3905, 0.3343, 0.3248

# Monochromacy



## Original Color

68.3988, 0.3462, 0.3496

## Achromatopsia

69.3872, 0.3127, 0.3290

## Achromatomaly

69.0022, 0.3242, 0.3367

# CSS Examples

## Text

The CSS property to change the color of the text to Yxy 68.3988, 0.3462, 0.3496 is called "color". The color property can be set on classes, ids or directly on the HTML element.

This example shows how text in the color `rgb(237, 211, 192)` looks like.

```
.text, #text, p{  
    color:rgb(237, 211, 192)  
}
```

If you want to add a text shadow in that color use the text-shadow property, you can generate a text shadow directly with our [CSS Text Shadow Generator](#).

Here you see how black text with a 4 pixel rgb(237, 211, 192) colored shadow looks like.

```
.shadow{ text-shadow: 4px 4px 2px rgb(237, 211, 192) }
```

## Border

The CSS property to change the border of an element to Yxy 68.3988, 0.3462, 0.3496 is called "border". The border property can be set on classes, ids or directly on the HTML element.

This example shows the color as border, it can be applied via the CSS property "border" or "border-color".

```
.border, #border, table{ border:4px solid rgb(237, 211, 192) }
```

If only the border color should be changed use the property `border-color`.

```
.border{ border-color:rgb(237, 211, 192) }
```

If you want to add a box shadow in that color use:

Here you see how a box with a 4 pixel `rgb(237, 211, 192)` colored shadow looks like.

```
.boxshadow{ -moz-box-shadow:4px 4px 4px  
4px rgb(237, 211, 192); -webkit-box-  
shadow:4px 4px 4px 4px rgb(237, 211, 192);  
box-shadow:4px 4px 4px 4px rgb(237, 211,  
192) }
```



# Background

The CSS property to change the background color of an element to Yxy 68.3988, 0.3462, 0.3496 is called "background". The background property can be set on classes, ids or directly on the HTML element.

```
.background, #background, body{  
background: rgb(237, 211, 192) }
```

If only the background color should be changed can be used:

```
.background{ background-color: rgb(237,  
211, 192) }
```

This example shows the color as background, it is applied via the CSS property "background".

To optimize and compress your CSS code, you can use our [online CSS compressor and optimizer](#) based on csstidy. If you want to create a linear or radial gradient as background or border, check our [CSS Gradient Generator](#).

Hey! You found this booklet interesting? Support Converting Colors with the new Membership Option!

The pro membership hides all ads, plus gives you double the colors in the color bucket, and more awesome pro features!

**[Learn more, Memberships starting at \\$2.50/m!](#)**

**Follow me  
on Twitter!**

@ConvertingColor