

Converting Colors

Yxy(68.6542, 0.3262, 0.3290)

Have a look what the booklet for
Yxy(68.6542, 0.3262, 0.3290)
contains.

Yxy(68.6634, 0.3262, 0.3290)	3
<i>Conversions</i>	4
<i>Details</i>	6
<i>Harmonies</i>	12
<i>Previews</i>	24
<i>Color Blindness Simulation</i>	27
<i>CSS Examples</i>	30

Color

Yxy(68.6634, 0.3262, 0.3290)

Conversions

Conversions Part 1

Format	Color
Hex	E6D4D4
RGB	230, 212, 212
RGB Percent	90%, 83%, 83%
CMY	0.0977, 0.1687, 0.1686
CMYK	0.00, 0.08, 0.08, 0.10
HSL	360°, 27%, 87%
HSV	360°, 8%, 90%
XYZ	68.0790, 68.6634, 71.9609
YIQ	217.3820, 10.7280, 3.8160

Conversions

Conversions Part 2

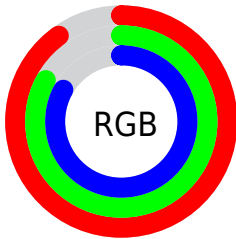
Format	Color
R _Y B	230, 212, 212
Decimal	15127764
CIE Lab	86.34, 6.26, 2.23
CIE LCh	86, 6.643, 19.636
Yxy	68.6634, 0.3262, 0.3290
Android (android.graphics.Color)	4293317844 (0xFFE6D4D4)
YUV	217.3820, -2.6533, 11.0660
Hunter-Lab	82.8634, 1.6414, 6.5152

Details

The Yxy color $68.6634, 0.3262, 0.3290$ is a light color, and the websafe version is hex `CCCCCC`. A complement of this color would be $76.3446, 0.3006, 0.3290$, and the grayscale version is $69.6846, 0.3127, 0.3290$.

A 20% lighter version of the original color is $100.0000, 0.3127, 0.3290$, and $35.5469, 0.3295, 0.3291$ is the 20% darker color. If you saturate the color by 10%, you get $56.8950, 0.3472, 0.3290$, and if you desaturate by 10%, it is $82.2416, 0.3094, 0.3290$.

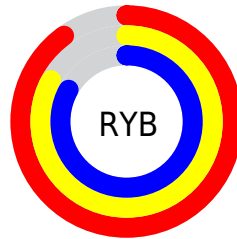
Distribution



Red (90%)

Green (83%)

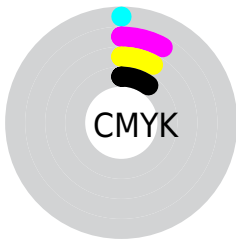
Blue (83%)



Red (90%)

Yellow (83%)

Blue (83%)

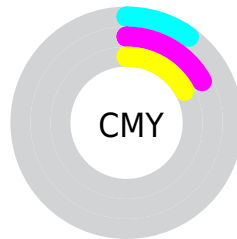


Cyan (0%)

Magenta (8%)

Yellow (8%)

Black (10%)



Cyan (10%)


Magenta (17%)


Yellow (17%)

Brightness & Saturation Gradients


These gradients show how the Yxy color 68.6634, 0.3262, 0.3290 changes by changing the brightness by 10 percent. The first figure shows a shift by +10% for each color and the second figure -10%.

Similar to the brightness gradients but the following saturation gradients show a change of the Yxy color 68.6634, 0.3262, 0.3290 by changing the saturation by 10% instead.


 68.6634, 0.3262,
0.3290

 68.6634, 0.3262,
0.3290


455.8429, 0.3199,
0.3290

 50.4376, 0.3277,
0.3290


117.3007, 0.3240,
0.3290

 35.7612, 0.3295,
0.3290


148.4810, 0.3231,
0.3290

 24.2499, 0.3318,
0.3289


184.7483, 0.3224,
0.3290

 15.5191, 0.3349,
0.3289

226.4869, 0.3218,
0.3290

 9.1845, 0.3392,
0.3288

274.0813, 0.3212,
0.3290

 4.8617, 0.3455,
0.3286

327.9158, 0.3207,

 2.1664, 0.3558,

0.3290

388.3749, 0.3203,
0.3290

0.3281

0.7016, 0.3850,
0.3295

0.0000, 0.0000,
0.0000

68.6634, 0.3262,
0.3290

68.6634, 0.3262,
0.3290

56.8950, 0.3472,
0.3290

82.2416, 0.3094,
0.3290

46.8514, 0.3735,
0.3290

95.5753, 0.2976,
0.3290

38.4544, 0.4060,
0.3291

31.6162, 0.4453,
0.3292

■ 26.2408, 0.4905,
0.3293

■ 22.2218, 0.5388,
0.3294

■ 19.4380, 0.5840,
0.3296

■ 17.7474, 0.6184,
0.3298

■ 16.9537, 0.6370,
0.3299

Harmonies

Analogous

The Analogous color harmony consists of three colors that are next to each other on the color wheel.



68.6634, 0.3200, 0.3221



68.6634, 0.3262, 0.3290



68.6634, 0.3288, 0.3360

Triad

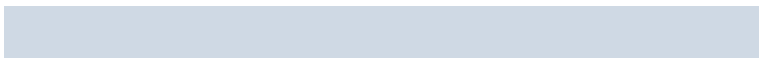
The Triadic color harmony groups three colors that are evenly spaced from another and form a triangle on the color wheel.



68.6634, 0.3262, 0.3290



68.6634, 0.3134, 0.3414



68.6634, 0.2986, 0.3167

Complementary

The Complementary color scheme is a pair of colors which are on the opposite of each other on the color wheel.



68.6634, 0.3262, 0.3290



76.3446, 0.3006, 0.3290

Split Complementary

Split-complementary colors differ from the complementary color scheme. The scheme consists of three colors, the original color and two neighbors of the complement color.



68.6634, 0.2969, 0.3217



68.6634, 0.3262, 0.3290



68.6634, 0.3054, 0.3361

Square

The Square scheme is like the rectangle color scheme, but the four colors are evenly spaced on the color wheel.



68.6634, 0.3262, 0.3290



68.6634, 0.3213, 0.3433



68.6634, 0.2994, 0.3288



68.6634, 0.3040, 0.3151

Rectangle

The Rectangle color scheme consists of four colors that form a rectangle on the color wheel.



68.6634, 0.3262, 0.3290



68.6634, 0.3281, 0.3398



68.6634, 0.2994, 0.3288



68.6634, 0.2976, 0.3181

Sweetspot

The Sweet Spot groups the original color and five complimentary colors.



68.6664, 0.3262, 0.3290



96.4655, 0.3159, 0.3290



69.5797, 0.3134, 0.3098



20.6846, 0.3158, 0.3290



0.0000, 0.0000, 0.0000



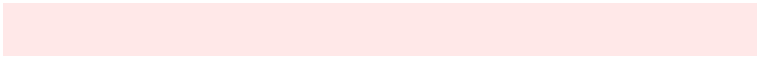
21.4041, 0.3127, 0.3290

Same Dimension

The Same Dimension uses a secret algorithm to generate beautiful new colors.



68.6664, 0.3262, 0.3290



84.8329, 0.3284, 0.3290



73.1559, 0.3253, 0.3384



14.3684, 0.3292, 0.3290



9.5250, 0.6399, 0.3299



0.7040, 0.6393, 0.3295

Inverse Universe

The Inverse Universe completely reimagines the original color for something new.



68.6664, 0.3262, 0.3290



84.8329, 0.3284, 0.3290



71.5981, 0.3006, 0.3194



14.3684, 0.3292, 0.3290



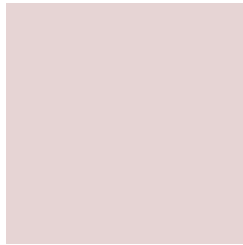
9.5250, 0.6399, 0.3299



0.7040, 0.6393, 0.3295

Previews

White Background



This preview shows how the Yxy color 68.6634, 0.3262, 0.3290 looks on a white background.

Color Contrast Check

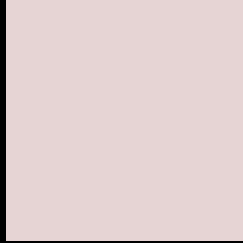
Large Text (above 18pt) WCAG AA × Fail

Any Text WCAG AA × Fail

Large Text (above 18pt) WCAG AAA × Fail

Any Text WCAG AAA × Fail

Black Background



This preview shows how the Yxy color 68.6634, 0.3262, 0.3290 looks on a black background.

Color Contrast Check

Large Text (above 18pt) WCAG AA ✓ Pass

Any Text WCAG AA ✓ Pass

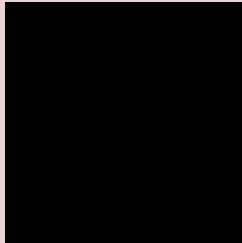
Large Text (above 18pt) WCAG AAA ✓ Pass

Any Text WCAG AAA ✓ Pass

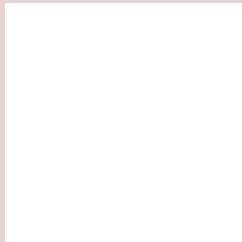
If you want to check with other color combinations, try the [Color Contrast Checker](#).

Yxy 68.6634, 0.3262, 0.3290

Background



This preview shows how black text looks on a background with the Yxy color 68.6634, 0.3262, 0.3290.



This preview shows how white text looks on a background with the Yxy color 68.6634, 0.3262, 0.3290.

Color Blindness Simulation

Color vision deficiency is a very complex topic, and I could not describe the different causes any better than Wikipedia does, so if you want to learn more, you should check out their [article about color blindness](#).

Dichromacy



Original Color

68.6634, 0.3262, 0.3290

Protanopia

68.6716, 0.3170, 0.3301

Deuteranopia

68.5822, 0.3319, 0.3248



Tritanopia

68.7400, 0.3180, 0.3120

Trichromacy



Original Color

68.6634, 0.3262, 0.3290

Protanomaly

68.7445, 0.3208, 0.3301

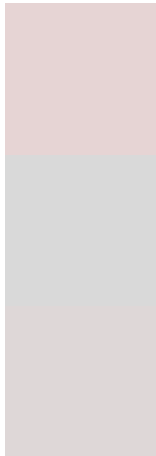
Deuteranomaly

68.5595, 0.3294, 0.3258

Tritanomaly

68.7979, 0.3206, 0.3183

Monochromacy



Original Color

68.6634, 0.3262, 0.3290

Achromatopsia

69.3872, 0.3127, 0.3290

Achromatomaly

69.0368, 0.3178, 0.3290

CSS Examples

Text

The CSS property to change the color of the text to Yxy 68.6634, 0.3262, 0.3290 is called "color". The color property can be set on classes, ids or directly on the HTML element.

This example shows how text in the color `rgb(230, 212, 212)` looks like.

```
.text, #text, p{  
    color:rgb(230, 212, 212)  
}
```

If you want to add a text shadow in that color use the text-shadow property, you can generate a text shadow directly with our [CSS Text Shadow Generator](#).

Here you see how black text with a 4 pixel rgb(230, 212, 212) colored shadow looks like.

```
.shadow{ text-shadow: 4px 4px 2px rgb(230, 212, 212) }
```

Border

The CSS property to change the border of an element to Yxy 68.6634, 0.3262, 0.3290 is called "border". The border property can be set on classes, ids or directly on the HTML element.

This example shows the color as border, it can be applied via the CSS property "border" or "border-color".

```
.border, #border, table{ border:4px solid rgb(230, 212, 212) }
```

If only the border color should be changed use the property `border-color`.

```
.border{ border-color:rgb(230, 212, 212) }
```

If you want to add a box shadow in that color use:

Here you see how a box with a 4 pixel `rgb(230, 212, 212)` colored shadow looks like.

```
.boxshadow{ -moz-box-shadow:4px 4px 4px  
4px rgb(230, 212, 212); -webkit-box-  
shadow:4px 4px 4px 4px rgb(230, 212, 212);  
box-shadow:4px 4px 4px 4px rgb(230, 212,  
212) }
```


Background

The CSS property to change the background color of an element to Yxy 68.6634, 0.3262, 0.3290 is called "background". The background property can be set on classes, ids or directly on the HTML element.

```
.background, #background, body{  
background: rgb(230, 212, 212) }
```

If only the background color should be changed can be used:

```
.background{ background-color: rgb(230,  
212, 212) }
```

This example shows the color as background, it is applied via the CSS property "background".

To optimize and compress your CSS code, you can use our [online CSS compressor and optimizer](#) based on csstidy. If you want to create a linear or radial gradient as background or border, check our [CSS Gradient Generator](#).

Hey! You found this booklet interesting? Support Converting Colors with the new Membership Option!

The pro membership hides all ads, plus gives you double the colors in the color bucket, and more awesome pro features!

[Learn more, Memberships starting at \\$2.50/m!](#)

**Follow me
on Twitter!**

@ConvertingColor