

Converting Colors

$Yxy(68.6857, 0.3381, 0.3388)$

Have a look what the booklet for
Yxy(68.6857, 0.3381, 0.3388)
contains.

Yxy(68.6857, 0.3381, 0.3388)	3
Conversions	4
Details	6
Harmonies	12
Previews	24
Color Blindness Simulation	27
CSS Examples	30

Color

Yxy(68.6857, 0.3381, 0.3388)

Conversions

Conversions Part 1

Format	Color
Hex	ECD3CA
RGB	236, 211, 202
RGB Percent	93%, 83%, 79%
CMY	0.0745, 0.1725, 0.2080
CMYK	0.00, 0.11, 0.14, 0.07
HSL	16°, 47%, 86%
HSV	16°, 14%, 93%
XYZ	68.5438, 68.6857, 65.5028
YIQ	217.4490, 17.7890, 2.5010

Conversions

Conversions Part 2

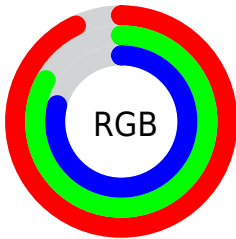
Format	Color
R _Y B	236, 214, 202
Decimal	15520714
CIE Lab	86.35, 7.22, 7.63
CIE LCh	86, 10.505, 46.553
Yxy	68.6857, 0.3381, 0.3388
Android (android.graphics.Color)	4293710794 (0xFFECD3CA)
YUV	217.4490, -7.6164, 16.2692
Hunter-Lab	82.8768, 2.5950, 11.1532

Details

The Yxy color **68.6857, 0.3381, 0.3388** is a light color, and the websafe version is hex **FFCCCC**. A complement of this color would be **73.5253, 0.2905, 0.3190**, and the grayscale version is **69.7569, 0.3127, 0.3290**.

A 20% lighter version of the original color is **100.0000, 0.3127, 0.3290**, and **35.6184, 0.3445, 0.3403** is the 20% darker color. If you saturate the color by 10%, you get **59.5023, 0.3600, 0.3461**, and if you desaturate by 10%, it is **78.9746, 0.3198, 0.3319**.

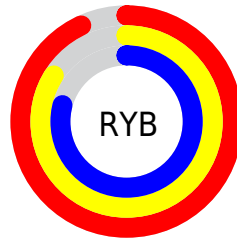
Distribution



Red (93%)

Green (83%)

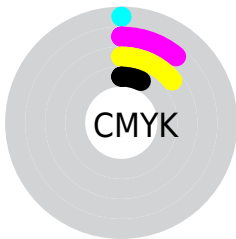
Blue (79%)



Red (93%)

Yellow (84%)

Blue (79%)

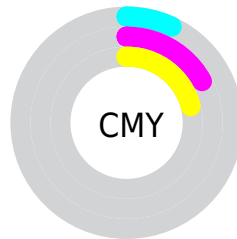


Cyan (0%)

Magenta (11%)

Yellow (14%)

Black (7%)



Cyan (7%)


Magenta (17%)

Yellow (21%)

Brightness & Saturation Gradients

These gradients show how the Yxy color 68.6857, 0.3381, 0.3388 changes by changing the brightness by 10 percent. The first figure shows a shift by +10% for each color and the second figure -10%.

Similar to the brightness gradients but the following saturation gradients show a change of the Yxy color 68.6857, 0.3381, 0.3388 by changing the saturation by 10% instead.

 68.6857, 0.3381,
0.3388

 68.6857, 0.3381,
0.3388


455.9217, 0.3262,
0.3343

 50.4558, 0.3409,
0.3398


117.3325, 0.3339,
0.3373

 35.7757, 0.3443,
0.3410


148.5183, 0.3323,
0.3367

 24.2610, 0.3488,
0.3426


184.7914, 0.3309,
0.3361

 15.5273, 0.3546,
0.3446

226.5363, 0.3297,
0.3357

 9.1903, 0.3627,
0.3472

274.1374, 0.3287,
0.3353

 4.8655, 0.3747,
0.3509

327.9790, 0.3277,

 2.1686, 0.3941,

0.3349

0.3563

388.4457, 0.3269,
0.3346

0.7028, 0.4746,
0.3950

0.0000, 0.0000,
0.0000

68.6857, 0.3381,
0.3388

68.6857, 0.3381,
0.3388

59.5023, 0.3600,
0.3461

78.9746, 0.3198,
0.3319

51.3783, 0.3859,
0.3535

90.3952, 0.3045,
0.3255

44.2775, 0.4163,
0.3607

96.5728, 0.3011,
0.3290

38.1583, 0.4509,
0.3668

■ 32.9762, 0.4888,
0.3710

■ 28.6827, 0.5277,
0.3721

■ 25.2250, 0.5641,
0.3691

■ 22.5434, 0.5936,
0.3616

■ 21.3531, 0.6068,
0.3564

Harmonies

Analogous

The Analogous color harmony consists of three colors that are next to each other on the color wheel.



68.6857, 0.3333, 0.3277



68.6857, 0.3381, 0.3388



68.6857, 0.3359, 0.3476

Triad

The Triadic color harmony groups three colors that are evenly spaced from another and form a triangle on the color wheel.



68.6857, 0.3381, 0.3388



68.6857, 0.3024, 0.3413



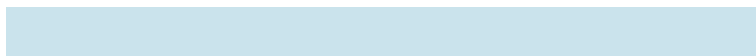
68.6857, 0.2979, 0.3071

Complementary

The Complementary color scheme is a pair of colors which are on the opposite of each other on the color wheel.



68.6857, 0.3381, 0.3388



73.5253, 0.2905, 0.3190

Split Complementary

Split-complementary colors differ from the complementary color scheme. The scheme consists of three colors, the original color and two neighbors of the complement color.



68.6857, 0.2899, 0.3102



68.6857, 0.3381, 0.3388



68.6857, 0.2925, 0.3298

Square

The Square scheme is like the rectangle color scheme, but the four colors are evenly spaced on the color wheel.



68.6857, 0.3381, 0.3388



68.6857, 0.3151, 0.3493



68.6857, 0.2880, 0.3184



68.6857, 0.3099, 0.3097

Rectangle

The Rectangle color scheme consists of four colors that form a rectangle on the color wheel.



68.6857, 0.3381, 0.3388



68.6857, 0.3308, 0.3509



68.6857, 0.2880, 0.3184



68.6857, 0.2947, 0.3075

Sweetspot

The Sweet Spot groups the original color and five complimentary colors.



68.6888, 0.3381, 0.3388



94.6738, 0.3191, 0.3316



65.6333, 0.3205, 0.3020



20.0549, 0.3204, 0.3321



0.0000, 0.0000, 0.0000



21.4041, 0.3127, 0.3290

Same Dimension

The Same Dimension uses a secret algorithm to generate beautiful new colors.



68.6888, 0.3381, 0.3388



78.8591, 0.3435, 0.3407



77.3036, 0.3356, 0.3561



15.7047, 0.3286, 0.3353



11.9511, 0.6040, 0.3586



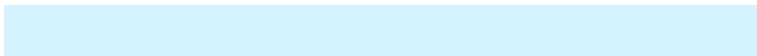
1.0920, 0.5769, 0.3801

Inverse Universe

The Inverse Universe completely reimagines the original color for something new.



73.5253, 0.2905, 0.3190



85.5573, 0.2864, 0.3170



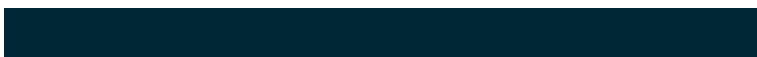
64.9380, 0.2898, 0.3004



16.4056, 0.2981, 0.3226



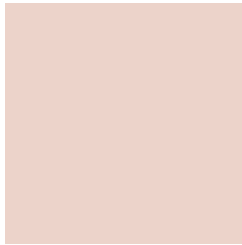
20.1024, 0.2002, 0.2405



1.7347, 0.2040, 0.2543

Previews

White Background



This preview shows how the Yxy color 68.6857, 0.3381, 0.3388 looks on a white background.

Color Contrast Check

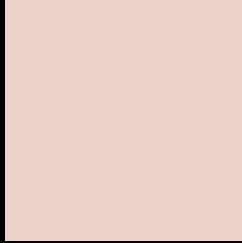
Large Text (above 18pt) WCAG AA × Fail

Any Text WCAG AA × Fail

Large Text (above 18pt) WCAG AAA × Fail

Any Text WCAG AAA × Fail

Black Background



This preview shows how the Yxy color 68.6857, 0.3381, 0.3388 looks on a black background.

Color Contrast Check

Large Text (above 18pt) WCAG AA ✓ Pass

Any Text WCAG AA ✓ Pass

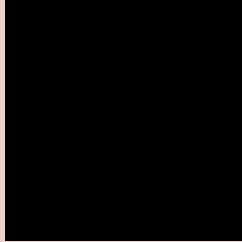
Large Text (above 18pt) WCAG AAA ✓ Pass

Any Text WCAG AAA ✓ Pass

If you want to check with other color combinations, try the [Color Contrast Checker](#).

Yxy 68.6857, 0.3381, 0.3388

Background



This preview shows how black text looks on a background with the Yxy color 68.6857, 0.3381, 0.3388.

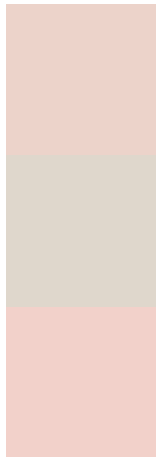


This preview shows how white text looks on a background with the Yxy color 68.6857, 0.3381, 0.3388.

Color Blindness Simulation

Color vision deficiency is a very complex topic, and I could not describe the different causes any better than Wikipedia does, so if you want to learn more, you should check out their [article about color blindness](#).

Dichromacy



Original Color

68.6857, 0.3381, 0.3388

Protanopia

68.6485, 0.3262, 0.3412

Deuteranopia

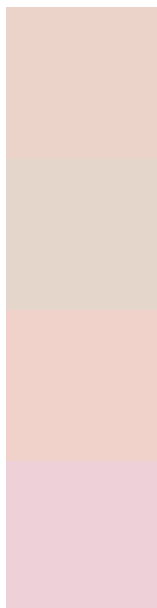
68.7424, 0.3431, 0.3365



Tritanopia

68.8443, 0.3248, 0.3122

Trichromacy



Original Color

68.6857, 0.3381, 0.3388

Protanomaly

68.8989, 0.3308, 0.3411

Deuteranomaly

68.8827, 0.3413, 0.3376

Tritanomaly

68.7359, 0.3297, 0.3216

Monochromacy



Original Color

68.6857, 0.3381, 0.3388

Achromatopsia

69.3872, 0.3127, 0.3290

Achromatomaly

69.2016, 0.3214, 0.3323

CSS Examples

Text

The CSS property to change the color of the text to Yxy 68.6857, 0.3381, 0.3388 is called "color". The color property can be set on classes, ids or directly on the HTML element.

This example shows how text in the color `rgb(236, 211, 202)` looks like.

```
.text, #text, p{  
    color:rgb(236, 211, 202)  
}
```

If you want to add a text shadow in that color use the text-shadow property, you can generate a text shadow directly with our [CSS Text Shadow Generator](#).

Here you see how black text with a 4 pixel rgb(236, 211, 202) colored shadow looks like.

```
.shadow{ text-shadow: 4px 4px 2px rgb(236, 211, 202) }
```

Border

The CSS property to change the border of an element to Yxy 68.6857, 0.3381, 0.3388 is called "border". The border property can be set on classes, ids or directly on the HTML element.

This example shows the color as border, it can be applied via the CSS property "border" or "border-color".

```
.border, #border, table{ border:4px solid rgb(236, 211, 202) }
```

If only the border color should be changed use the property `border-color`.

```
.border{ border-color:rgb(236, 211, 202) }
```

If you want to add a box shadow in that color use:

Here you see how a box with a 4 pixel `rgb(236, 211, 202)` colored shadow looks like.

```
.boxshadow{ -moz-box-shadow:4px 4px 4px  
4px rgb(236, 211, 202); -webkit-box-  
shadow:4px 4px 4px 4px rgb(236, 211, 202);  
box-shadow:4px 4px 4px 4px rgb(236, 211,  
202) }
```


Background

The CSS property to change the background color of an element to Yxy 68.6857, 0.3381, 0.3388 is called "background". The background property can be set on classes, ids or directly on the HTML element.

```
.background, #background, body{  
background: rgb(236, 211, 202) }
```

If only the background color should be changed can be used:

```
.background{ background-color: rgb(236,  
211, 202) }
```

This example shows the color as background, it is applied via the CSS property "background".

To optimize and compress your CSS code, you can use our [online CSS compressor and optimizer](#) based on csstidy. If you want to create a linear or radial gradient as background or border, check our [CSS Gradient Generator](#).

Hey! You found this booklet interesting? Support Converting Colors with the new Membership Option!

The pro membership hides all ads, plus gives you double the colors in the color bucket, and more awesome pro features!

[Learn more, Memberships starting at \\$2.50/m!](#)

**Follow me
on Twitter!**

@ConvertingColor