

Converting Colors

$Yxy(69.1658, 0.3230, 0.3276)$

Have a look what the booklet for
Yxy(69.1658, 0.3230, 0.3276)
contains.

Yxy(68.9888, 0.3224, 0.3269)	3
<i>Conversions</i>	4
<i>Details</i>	6
<i>Harmonies</i>	12
<i>Previews</i>	24
<i>Color Blindness Simulation</i>	27
<i>CSS Examples</i>	30

Color

Yxy(68.9888, 0.3224, 0.3269)

Conversions

Conversions Part 1

Format	Color
Hex	E4D5D7
RGB	228, 213, 215
RGB Percent	89%, 84%, 84%
CMY	0.1061, 0.1646, 0.1569
CMYK	0.00, 0.07, 0.06, 0.11
HSL	352°, 22%, 86%
HSV	352°, 7%, 89%
XYZ	68.0391, 68.9888, 74.0115
YIQ	217.7130, 8.2980, 3.8020

Conversions

Conversions Part 2

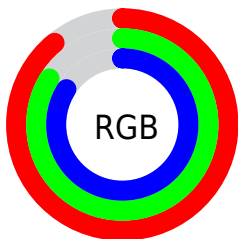
Format	Color
R _Y B	228, 213, 215
Decimal	14996951
CIE Lab	86.50, 5.47, 0.87
CIE LCh	86, 5.542, 9.045
Yxy	68.9888, 0.3224, 0.3269
Android (android.graphics.Color)	4293187031 (0xFFE4D5D7)
YUV	217.7130, -1.3375, 9.0217
Hunter-Lab	83.0595, 0.8662, 5.3103

Details

The Yxy color **68.9888, 0.3224, 0.3269** is a light color, and the websafe version is hex **CCCCCC**. A complement of this color would be **75.0935, 0.3038, 0.3311**, and the grayscale version is **69.9048, 0.3127, 0.3290**.

A 20% lighter version of the original color is **100.0000, 0.3127, 0.3290**, and **35.8760, 0.3256, 0.3262** is the 20% darker color. If you saturate the color by 10%, you get **57.3609, 0.3401, 0.3235**, and if you desaturate by 10%, it is **82.3575, 0.3081, 0.3301**.

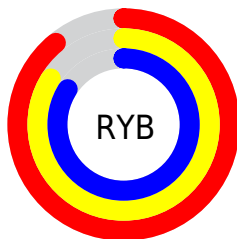
Distribution



Red (89%)

Green (84%)

Blue (84%)



Red (89%)

Yellow (84%)

Blue (84%)

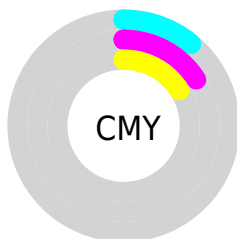


Cyan (0%)

Magenta (7%)

Yellow (6%)

Black (11%)



Cyan (11%)


Magenta (16%)

Yellow (16%)

Brightness & Saturation Gradients


These gradients show how the Yxy color 68.9888, 0.3224, 0.3269 changes by changing the brightness by 10 percent. The first figure shows a shift by +10% for each color and the second figure -10%.

Similar to the brightness gradients but the following saturation gradients show a change of the Yxy color 68.9888, 0.3224, 0.3269 by changing the saturation by 10% instead.


 68.9888, 0.3224,
0.3269

 68.9888, 0.3224,
0.3269


456.9915, 0.3179,
0.3279

 50.7026, 0.3234,
0.3267


117.7656, 0.3208,
0.3273

 35.9720, 0.3248,
0.3264


149.0249, 0.3202,
0.3274

 24.4125, 0.3264,
0.3260


185.3775, 0.3197,
0.3275

 15.6399, 0.3286,
0.3255

227.2076, 0.3192,
0.3276

 9.2697, 0.3317,
0.3248

274.8996, 0.3188,
0.3277

 4.9175, 0.3361,
0.3238

328.8380, 0.3185,

 2.1990, 0.3434,

0.3278

0.3220

389.4072, 0.3182,
0.3278

0.7194, 0.3618,
0.3184

0.0000, 0.0000,
0.0000

68.9888, 0.3224,
0.3269

68.9888, 0.3224,
0.3269

57.3609, 0.3401,
0.3235

82.3575, 0.3081,
0.3301

47.3935, 0.3622,
0.3199

95.1970, 0.2966,
0.3294

39.0134, 0.3894,
0.3164

95.2241, 0.2963,
0.3290

32.1387, 0.4224,
0.3132

■ 26.6799, 0.4611,
0.3107

■ 22.5379, 0.5043,
0.3097

■ 19.6010, 0.5485,
0.3108

■ 17.7389, 0.5882,
0.3144

■ 16.7877, 0.6176,
0.3201

Harmonies

Analogous

The Analogous color harmony consists of three colors that are next to each other on the color wheel.



68.9888, 0.3165, 0.3215



68.9888, 0.3224, 0.3269



68.9888, 0.3257, 0.3329

Triad

The Triadic color harmony groups three colors that are evenly spaced from another and form a triangle on the color wheel.



68.9888, 0.3224, 0.3269



68.9888, 0.3158, 0.3402



68.9888, 0.3001, 0.3200

Complementary

The Complementary color scheme is a pair of colors which are on the opposite of each other on the color wheel.



68.9888, 0.3224, 0.3269



75.0935, 0.3038, 0.3311

Split Complementary

Split-complementary colors differ from the complementary color scheme. The scheme consists of three colors, the original color and two neighbors of the complement color.



68.9888, 0.2999, 0.3249



68.9888, 0.3224, 0.3269



68.9888, 0.3089, 0.3367

Square

The Square scheme is like the rectangle color scheme, but the four colors are evenly spaced on the color wheel.



68.9888, 0.3224, 0.3269



68.9888, 0.3219, 0.3406



68.9888, 0.3031, 0.3311



68.9888, 0.3036, 0.3175

Rectangle

The Rectangle color scheme consists of four colors that form a rectangle on the color wheel.



68.9888, 0.3224, 0.3269



68.9888, 0.3260, 0.3364



68.9888, 0.3031, 0.3311



68.9888, 0.2996, 0.3214

Sweetspot

The Sweet Spot groups the original color and five complimentary colors.



68.9918, 0.3224, 0.3269



96.5071, 0.3155, 0.3284



69.3609, 0.3120, 0.3130



20.6931, 0.3154, 0.3284



0.0000, 0.0000, 0.0000



21.4041, 0.3127, 0.3290

Same Dimension

The Same Dimension uses a secret algorithm to generate beautiful new colors.



68.9918, 0.3224, 0.3269



86.5789, 0.3248, 0.3264



71.6894, 0.3233, 0.3349



14.3987, 0.3272, 0.3259



9.5881, 0.6227, 0.3204



0.7185, 0.5896, 0.3022

Inverse Universe

The Inverse Universe completely reimagines the original color for something new.



68.9918, 0.3224, 0.3269



86.5789, 0.3248, 0.3264



72.2417, 0.3026, 0.3230



14.3987, 0.3272, 0.3259



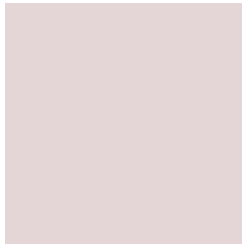
9.5881, 0.6227, 0.3204



0.7185, 0.5896, 0.3022

Previews

White Background



This preview shows how the Yxy color 68.9888, 0.3224, 0.3269 looks on a white background.

Color Contrast Check

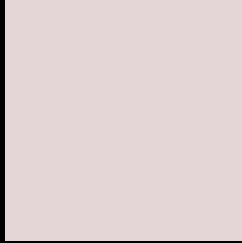
Large Text (above 18pt) WCAG AA × Fail

Any Text WCAG AA × Fail

Large Text (above 18pt) WCAG AAA × Fail

Any Text WCAG AAA × Fail

Black Background



This preview shows how the Yxy color 68.9888, 0.3224, 0.3269 looks on a black background.

Color Contrast Check

Large Text (above 18pt) WCAG AA ✓ Pass

Any Text WCAG AA ✓ Pass

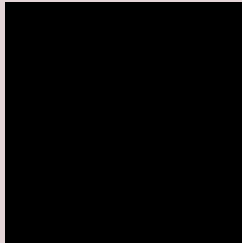
Large Text (above 18pt) WCAG AAA ✓ Pass

Any Text WCAG AAA ✓ Pass

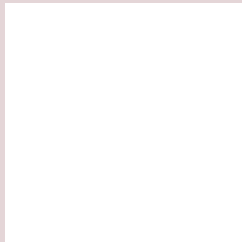
If you want to check with other color combinations, try the [Color Contrast Checker](#).

Yxy 68.9888, 0.3224, 0.3269

Background



This preview shows how black text looks on a background with the Yxy color 68.9888, 0.3224, 0.3269.



This preview shows how white text looks on a background with the Yxy color 68.9888, 0.3224, 0.3269.

Color Blindness Simulation

Color vision deficiency is a very complex topic, and I could not describe the different causes any better than Wikipedia does, so if you want to learn more, you should check out their [article about color blindness](#).

Dichromacy



Original Color

68.9888, 0.3224, 0.3269

Protanopia

68.7744, 0.3157, 0.3279

Deuteranopia

69.2282, 0.3296, 0.3227



Tritanopia

69.0130, 0.3150, 0.3109

Trichromacy



Original Color

68.9888, 0.3224, 0.3269

Protanomaly

68.7390, 0.3180, 0.3268

Deuteranomaly

69.0388, 0.3264, 0.3237

Tritanomaly

69.0727, 0.3177, 0.3172

Monochromacy



Original Color

68.9888, 0.3224, 0.3269

Achromatopsia

70.1102, 0.3127, 0.3290

Achromatomaly

69.6511, 0.3164, 0.3279

CSS Examples

Text

The CSS property to change the color of the text to Yxy 68.9888, 0.3224, 0.3269 is called "color". The color property can be set on classes, ids or directly on the HTML element.

This example shows how text in the color `rgb(228, 213, 215)` looks like.

```
.text, #text, p{  
    color:rgb(228, 213, 215)  
}
```

If you want to add a text shadow in that color use the text-shadow property, you can generate a text shadow directly with our [CSS Text Shadow Generator](#).

Here you see how black text with a 4 pixel rgb(228, 213, 215) colored shadow looks like.

```
.shadow{ text-shadow: 4px 4px 2px rgb(228, 213, 215) }
```

Border

The CSS property to change the border of an element to Yxy 68.9888, 0.3224, 0.3269 is called "border". The border property can be set on classes, ids or directly on the HTML element.

This example shows the color as border, it can be applied via the CSS property "border" or "border-color".

```
.border, #border, table{ border:4px solid rgb(228, 213, 215) }
```

If only the border color should be changed use the property `border-color`.

```
.border{ border-color:rgb(228, 213, 215) }
```

If you want to add a box shadow in that color use:

Here you see how a box with a 4 pixel `rgb(228, 213, 215)` colored shadow looks like.

```
.boxshadow{ -moz-box-shadow:4px 4px 4px  
4px rgb(228, 213, 215); -webkit-box-  
shadow:4px 4px 4px 4px rgb(228, 213, 215);  
box-shadow:4px 4px 4px 4px rgb(228, 213,  
215) }
```


Background

The CSS property to change the background color of an element to Yxy 68.9888, 0.3224, 0.3269 is called "background". The background property can be set on classes, ids or directly on the HTML element.

```
.background, #background, body{  
background: rgb(228, 213, 215) }
```

If only the background color should be changed can be used:

```
.background{ background-color: rgb(228,  
213, 215) }
```

This example shows the color as background, it is applied via the CSS property "background".

To optimize and compress your CSS code, you can use our [online CSS compressor and optimizer](#) based on csstidy. If you want to create a linear or radial gradient as background or border, check our [CSS Gradient Generator](#).

Hey! You found this booklet interesting? Support Converting Colors with the new Membership Option!

The pro membership hides all ads, plus gives you double the colors in the color bucket, and more awesome pro features!

[Learn more, Memberships starting at \\$2.50/m!](#)

**Follow me
on Twitter!**

@ConvertingColor