

Converting Colors

Yxy(69.2550, 0.3273, 0.3289)

Have a look what the booklet for
Yxy(69.2550, 0.3273, 0.3289)
contains.

Yxy(69.0469, 0.3269, 0.3280)	3
<i>Conversions</i>	4
<i>Details</i>	6
<i>Harmonies</i>	12
<i>Previews</i>	24
<i>Color Blindness Simulation</i>	27
<i>CSS Examples</i>	30

Color

Yxy(69.0469, 0.3269, 0.3280)

Conversions

Conversions Part 1

Format	Color
Hex	E8D4D5
RGB	232, 212, 213
RGB Percent	91%, 83%, 84%
CMY	0.0905, 0.1685, 0.1647
CMYK	0.00, 0.09, 0.08, 0.09
HSL	357°, 30%, 87%
HSV	357°, 9%, 91%
XYZ	68.8153, 69.0469, 72.6466
YIQ	218.0940, 11.5990, 4.5510

Conversions

Conversions Part 2

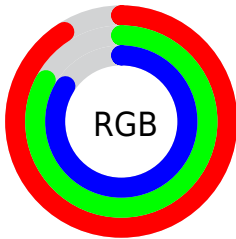
Format	Color
R _Y B	232, 212, 213
Decimal	15258837
CIE Lab	86.53, 7.04, 2.01
CIE LCh	87, 7.325, 15.916
Yxy	69.0469, 0.3269, 0.3280
Android (android.graphics.Color)	4293448917 (0xFFE8D4D5)
YUV	218.0940, -2.5113, 12.1956
Hunter-Lab	83.0945, 2.4109, 6.3309

Details

The Yxy color **69.0469, 0.3269, 0.3280** is a light color, and the websafe version is hex **CCCCCC**. A complement of this color would be **77.4446, 0.3001, 0.3300**, and the grayscale version is **70.1874, 0.3127, 0.3290**.

A 20% lighter version of the original color is **100.0000, 0.3127, 0.3290**, and **35.8127, 0.3306, 0.3277** is the 20% darker color. If you saturate the color by 10%, you get **57.2275, 0.3473, 0.3268**, and if you desaturate by 10%, it is **82.6905, 0.3106, 0.3292**.

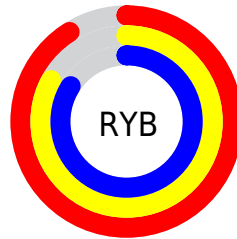
Distribution



Red (91%)

Green (83%)

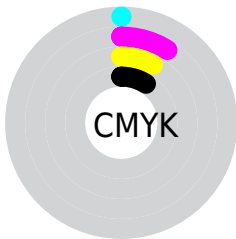
Blue (84%)



Red (91%)

Yellow (83%)

Blue (84%)

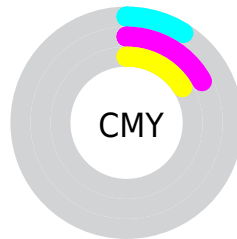


Cyan (0%)

Magenta (9%)

Yellow (8%)

Black (9%)



Cyan (9%)


Magenta (17%)


Yellow (16%)

Brightness & Saturation Gradients

These gradients show how the Yxy color 69.0469, 0.3269, 0.3280 changes by changing the brightness by 10 percent. The first figure shows a shift by +10% for each color and the second figure -10%.

Similar to the brightness gradients but the following saturation gradients show a change of the Yxy color 69.0469, 0.3269, 0.3280 by changing the saturation by 10% instead.

 69.0469, 0.3269,
0.3280

 69.0469, 0.3269,
0.3280


457.1964, 0.3203,
0.3285

 50.7499, 0.3284,
0.3279


117.8486, 0.3246,
0.3282

 36.0096, 0.3304,
0.3277


149.1220, 0.3237,
0.3283

 24.4416, 0.3328,
0.3275


185.4897, 0.3229,
0.3283

 15.6615, 0.3360,
0.3272

227.3362, 0.3222,
0.3284

 9.2850, 0.3405,
0.3268

275.0456, 0.3217,
0.3284

 4.9275, 0.3471,
0.3261

329.0026, 0.3211,

 2.2048, 0.3578,

0.3284

0.3250

389.5913, 0.3207,
0.3285

0.7226, 0.3855,
0.3244

0.0000, 0.0000,
0.0000

69.0469, 0.3269,
0.3280

69.0469, 0.3269,
0.3280

57.2275, 0.3473,
0.3268

82.6905, 0.3106,
0.3292

47.1465, 0.3727,
0.3255

95.8846, 0.2987,
0.3290

38.7245, 0.4040,
0.3243

31.8728, 0.4418,
0.3232

■ 26.4941, 0.4856,
0.3226

■ 22.4804, 0.5325,
0.3227

■ 19.7090, 0.5774,
0.3237

■ 18.0351, 0.6131,
0.3256

■ 17.2488, 0.6342,
0.3278

Harmonies

Analogous

The Analogous color harmony consists of three colors that are next to each other on the color wheel.



69.0469, 0.3197, 0.3206



69.0469, 0.3269, 0.3280



69.0469, 0.3303, 0.3358

Triad

The Triadic color harmony groups three colors that are evenly spaced from another and form a triangle on the color wheel.



69.0469, 0.3269, 0.3280



69.0469, 0.3146, 0.3431



69.0469, 0.2967, 0.3160

Complementary

The Complementary color scheme is a pair of colors which are on the opposite of each other on the color wheel.



69.0469, 0.3269, 0.3280



77.4446, 0.3001, 0.3300

Split Complementary

Split-complementary colors differ from the complementary color scheme. The scheme consists of three colors, the original color and two neighbors of the complement color.



69.0469, 0.2955, 0.3219



69.0469, 0.3269, 0.3280



69.0469, 0.3057, 0.3377

Square

The Square scheme is like the rectangle color scheme, but the four colors are evenly spaced on the color wheel.



69.0469, 0.3269, 0.3280



69.0469, 0.3231, 0.3447



69.0469, 0.2987, 0.3298



69.0469, 0.3022, 0.3137

Rectangle

The Rectangle color scheme consists of four colors that form a rectangle on the color wheel.



69.0469, 0.3269, 0.3280



69.0469, 0.3299, 0.3402



69.0469, 0.2987, 0.3298



69.0469, 0.2958, 0.3176

Sweetspot

The Sweet Spot groups the original color and five complimentary colors.



69.0499, 0.3269, 0.3280



94.7558, 0.3174, 0.3287



69.9025, 0.3130, 0.3080



19.9893, 0.3187, 0.3286



0.0000, 0.0000, 0.0000



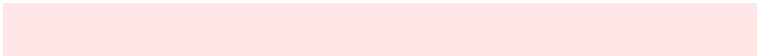
21.4041, 0.3127, 0.3290

Same Dimension

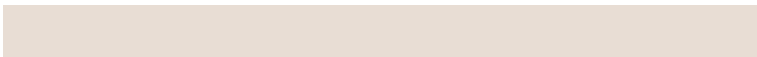
The Same Dimension uses a secret algorithm to generate beautiful new colors.



69.0499, 0.3269, 0.3280



83.3304, 0.3296, 0.3278



73.6050, 0.3266, 0.3386



14.3793, 0.3285, 0.3279



9.5432, 0.6348, 0.3270



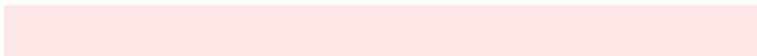
0.7092, 0.6202, 0.3190

Inverse Universe

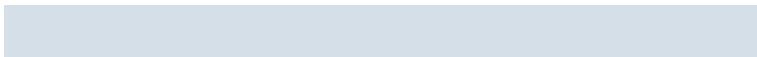
The Inverse Universe completely reimagines the original color for something new.



69.0499, 0.3269, 0.3280



83.3304, 0.3296, 0.3278



72.5864, 0.2995, 0.3192



14.3793, 0.3285, 0.3279



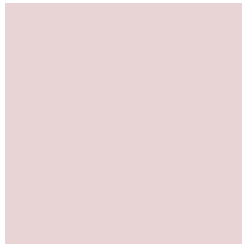
9.5432, 0.6348, 0.3270



0.7092, 0.6202, 0.3190

Previews

White Background



This preview shows how the Yxy color 69.0469, 0.3269, 0.3280 looks on a white background.

Color Contrast Check

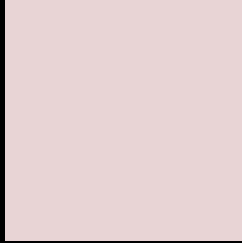
Large Text (above 18pt) WCAG AA × Fail

Any Text WCAG AA × Fail

Large Text (above 18pt) WCAG AAA × Fail

Any Text WCAG AAA × Fail

Black Background



This preview shows how the Yxy color 69.0469, 0.3269, 0.3280 looks on a black background.

Color Contrast Check

Large Text (above 18pt) WCAG AA ✓ Pass

Any Text WCAG AA ✓ Pass

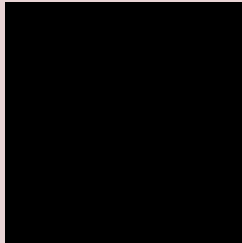
Large Text (above 18pt) WCAG AAA ✓ Pass

Any Text WCAG AAA ✓ Pass

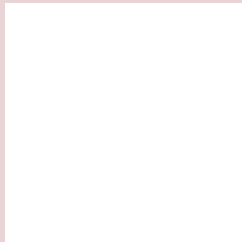
If you want to check with other color combinations, try the [Color Contrast Checker](#).

Yxy 69.0469, 0.3269, 0.3280

Background



This preview shows how black text looks on a background with the Yxy color 69.0469, 0.3269, 0.3280.



This preview shows how white text looks on a background with the Yxy color 69.0469, 0.3269, 0.3280.

Color Blindness Simulation

Color vision deficiency is a very complex topic, and I could not describe the different causes any better than Wikipedia does, so if you want to learn more, you should check out their [article about color blindness](#).

Dichromacy



Original Color

69.0469, 0.3269, 0.3280

Protanopia

69.3902, 0.3170, 0.3301

Deuteranopia

69.2480, 0.3325, 0.3259



Tritanopia

69.0766, 0.3194, 0.3121

Trichromacy



Original Color

69.0469, 0.3269, 0.3280

Protanomaly

69.4635, 0.3207, 0.3301

Deuteranomaly

69.2255, 0.3301, 0.3269

Tritanomaly

69.1326, 0.3221, 0.3184

Monochromacy



Original Color

69.0469, 0.3269, 0.3280

Achromatopsia

70.1102, 0.3127, 0.3290

Achromatomaly

69.7576, 0.3178, 0.3290

CSS Examples

Text

The CSS property to change the color of the text to Yxy 69.0469, 0.3269, 0.3280 is called "color". The color property can be set on classes, ids or directly on the HTML element.

This example shows how text in the color `rgb(232, 212, 213)` looks like.

```
.text, #text, p{  
    color:rgb(232, 212, 213)  
}
```

If you want to add a text shadow in that color use the text-shadow property, you can generate a text shadow directly with our [CSS Text Shadow Generator](#).

Here you see how black text with a 4 pixel rgb(232, 212, 213) colored shadow looks like.

```
.shadow{ text-shadow: 4px 4px 2px rgb(232, 212, 213) }
```

Border

The CSS property to change the border of an element to Yxy 69.0469, 0.3269, 0.3280 is called "border". The border property can be set on classes, ids or directly on the HTML element.

This example shows the color as border, it can be applied via the CSS property "border" or "border-color".

```
.border, #border, table{ border:4px solid rgb(232, 212, 213) }
```

If only the border color should be changed use the property `border-color`.

```
.border{ border-color:rgb(232, 212, 213) }
```

If you want to add a box shadow in that color use:

Here you see how a box with a 4 pixel `rgb(232, 212, 213)` colored shadow looks like.

```
.boxshadow{ -moz-box-shadow:4px 4px 4px  
4px rgb(232, 212, 213); -webkit-box-  
shadow:4px 4px 4px 4px rgb(232, 212, 213);  
box-shadow:4px 4px 4px 4px rgb(232, 212,  
213) }
```


Background

The CSS property to change the background color of an element to Yxy 69.0469, 0.3269, 0.3280 is called "background". The background property can be set on classes, ids or directly on the HTML element.

```
.background, #background, body{  
background: rgb(232, 212, 213) }
```

If only the background color should be changed can be used:

```
.background{ background-color: rgb(232,  
212, 213) }
```

This example shows the color as background, it is applied via the CSS property "background".

To optimize and compress your CSS code, you can use our [online CSS compressor and optimizer](#) based on csstidy. If you want to create a linear or radial gradient as background or border, check our [CSS Gradient Generator](#).

Hey! You found this booklet interesting? Support Converting Colors with the new Membership Option!

The pro membership hides all ads, plus gives you double the colors in the color bucket, and more awesome pro features!

[Learn more, Memberships starting at \\$2.50/m!](#)

**Follow me
on Twitter!**

@ConvertingColor