

Converting Colors

$Yxy(69.3054, 0.3255, 0.3208)$

Have a look what the booklet for
Yxy(69.3054, 0.3255, 0.3208)
contains.

Yxy(69.3652, 0.3250, 0.3205)	3
<i>Conversions</i>	4
<i>Details</i>	6
<i>Harmonies</i>	12
<i>Previews</i>	24
<i>Color Blindness Simulation</i>	27
<i>CSS Examples</i>	30

Color

Yxy(69.3652, 0.3250, 0.3205)

Conversions

Conversions Part 1

Format	Color
Hex	EBD3DB
RGB	235, 211, 219
RGB Percent	92%, 83%, 86%
CMY	0.0785, 0.1725, 0.1410
CMYK	0.00, 0.10, 0.07, 0.08
HSL	340°, 37%, 87%
HSV	340°, 10%, 92%
XYZ	70.3391, 69.3652, 76.7238
YIQ	219.0880, 11.7360, 7.5760

Conversions

Conversions Part 2

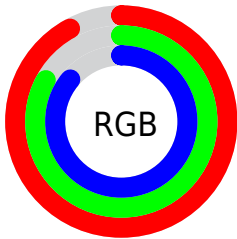
Format	Color
R _Y B	235, 211, 219
Decimal	15455195
CIE Lab	86.68, 9.66, -0.93
CIE LCh	87, 9.700, 354.497
Yxy	69.3652, 0.3250, 0.3205
Android (android.graphics.Color)	4293645275 (0xFFEBD3DB)
YUV	219.0880, -0.0434, 13.9548
Hunter-Lab	83.2858, 5.0023, 3.6815

Details

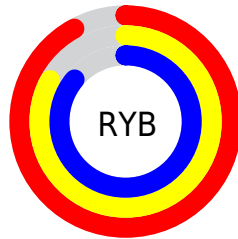
The Yxy color **69.3652, 0.3250, 0.3205** is a light color, and the websafe version is hex **CCCCCC**. A complement of this color would be **78.7970, 0.3018, 0.3377**, and the grayscale version is **70.8982, 0.3127, 0.3290**.

A 20% lighter version of the original color is **100.0000, 0.3127, 0.3290**, and **36.0410, 0.3280, 0.3180** is the 20% darker color. If you saturate the color by 10%, you get **57.7480, 0.3398, 0.3117**, and if you desaturate by 10%, it is **82.7723, 0.3129, 0.3288**.

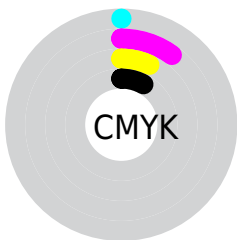
Distribution



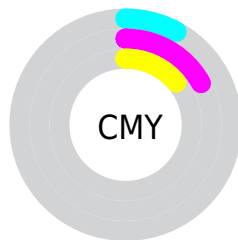
- Red (92%)
- Green (83%)
- Blue (86%)



- Red (92%)
- Yellow (83%)
- Blue (86%)



- Cyan (0%)
- Magenta (10%)
- Yellow (7%)
- Black (8%)





- Cyan (8%)
- Magenta (17%)
- Yellow (14%)

Brightness & Saturation Gradients

These gradients show how the Yxy color 69.3652, 0.3250, 0.3205 changes by changing the brightness by 10 percent. The first figure shows a shift by +10% for each color and the second figure -10%.

Similar to the brightness gradients but the following saturation gradients show a change of the Yxy color 69.3652, 0.3250, 0.3205 by changing the saturation by 10% instead.


 69.3652, 0.3250,
0.3205

 69.3652, 0.3250,
0.3205


458.3180, 0.3193,
0.3245

 51.0092, 0.3263,
0.3196

118.3030, 0.3230,
0.3219

 36.2159, 0.3280,
0.3185

149.6537, 0.3222,
0.3224

 24.6010, 0.3300,
0.3170


186.1046, 0.3216,
0.3229

 15.7800, 0.3328,
0.3151

228.0403, 0.3210,
0.3233

 9.3686, 0.3366,
0.3125

275.8450, 0.3205,
0.3236

 4.9824, 0.3421,
0.3088

329.9033, 0.3200,

 2.2369, 0.3510,

0.3239

0.3027

390.5995, 0.3196,
0.3242

0.7400, 0.3692,
0.2898

0.0000, 0.0000,
0.0000

69.3652, 0.3250,
0.3205

69.3652, 0.3250,
0.3205

57.7480, 0.3398,
0.3117

82.7723, 0.3129,
0.3288

47.8358, 0.3578,
0.3025

96.0987, 0.3031,
0.3336

39.5503, 0.3797,
0.2935

96.3982, 0.3005,
0.3290

32.8034, 0.4057,
0.2852

■ 27.4988, 0.4357,
0.2786

■ 23.5291, 0.4692,
0.2748

■ 20.7715, 0.5041,
0.2752

■ 19.0805, 0.5379,
0.2806

■ 18.2183, 0.5673,
0.2899

Harmonies

Analogous

The Analogous color harmony consists of three colors that are next to each other on the color wheel.



69.3652, 0.3134, 0.3127



69.3652, 0.3250, 0.3205



69.3652, 0.3334, 0.3306

Triad

The Triadic color harmony groups three colors that are evenly spaced from another and form a triangle on the color wheel.



69.3652, 0.3250, 0.3205



69.3652, 0.3235, 0.3498



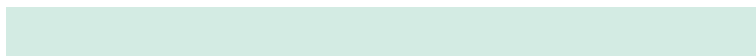
69.3652, 0.2898, 0.3169

Complementary

The Complementary color scheme is a pair of colors which are on the opposite of each other on the color wheel.



69.3652, 0.3250, 0.3205



78.7970, 0.3018, 0.3377

Split Complementary

Split-complementary colors differ from the complementary color scheme. The scheme consists of three colors, the original color and two neighbors of the complement color.



69.3652, 0.2924, 0.3269



69.3652, 0.3250, 0.3205



69.3652, 0.3117, 0.3462

Square

The Square scheme is like the rectangle color scheme, but the four colors are evenly spaced on the color wheel.



69.3652, 0.3250, 0.3205



69.3652, 0.3325, 0.3476



69.3652, 0.3004, 0.3377



69.3652, 0.2932, 0.3104

Rectangle

The Rectangle color scheme consists of four colors that form a rectangle on the color wheel.



69.3652, 0.3250, 0.3205



69.3652, 0.3360, 0.3374



69.3652, 0.3004, 0.3377



69.3652, 0.2900, 0.3199

Sweetspot

The Sweet Spot groups the original color and five complimentary colors.



69.3682, 0.3250, 0.3205



94.8924, 0.3161, 0.3266



68.8545, 0.3078, 0.3035



20.0260, 0.3170, 0.3259



0.0000, 0.0000, 0.0000



21.4041, 0.3127, 0.3290

Same Dimension

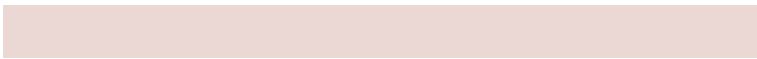
The Same Dimension uses a secret algorithm to generate beautiful new colors.



69.3682, 0.3250, 0.3205



80.7644, 0.3275, 0.3189



70.7619, 0.3303, 0.3329



15.1373, 0.3240, 0.3211



10.1628, 0.5631, 0.2876



0.8153, 0.5242, 0.2661

Inverse Universe

The Inverse Universe completely reimagines the original color for something new.



69.3682, 0.3250, 0.3205



80.7644, 0.3275, 0.3189



77.2130, 0.2970, 0.3251



15.1373, 0.3240, 0.3211



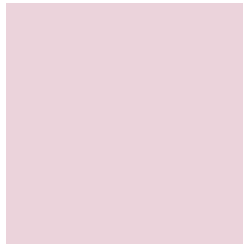
10.1628, 0.5631, 0.2876



0.8153, 0.5242, 0.2661

Previews

White Background



This preview shows how the Yxy color 69.3652, 0.3250, 0.3205 looks on a white background.

Color Contrast Check

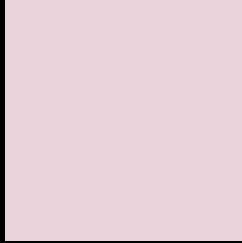
Large Text (above 18pt) WCAG AA × Fail

Any Text WCAG AA × Fail

Large Text (above 18pt) WCAG AAA × Fail

Any Text WCAG AAA × Fail

Black Background



This preview shows how the Yxy color 69.3652, 0.3250, 0.3205 looks on a black background.

Color Contrast Check

Large Text (above 18pt) WCAG AA ✓ Pass

Any Text WCAG AA ✓ Pass

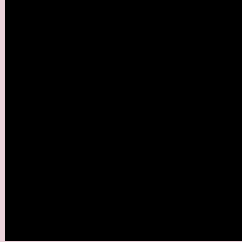
Large Text (above 18pt) WCAG AAA ✓ Pass

Any Text WCAG AAA ✓ Pass

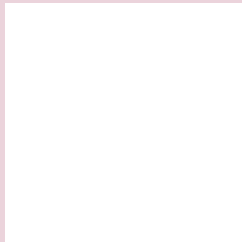
If you want to check with other color combinations, try the [Color Contrast Checker](#).

Yxy 69.3652, 0.3250, 0.3205

Background



This preview shows how black text looks on a background with the Yxy color 69.3652, 0.3250, 0.3205.



This preview shows how white text looks on a background with the Yxy color 69.3652, 0.3250, 0.3205.

Color Blindness Simulation

Color vision deficiency is a very complex topic, and I could not describe the different causes any better than Wikipedia does, so if you want to learn more, you should check out their [article about color blindness](#).

Dichromacy



Original Color

69.3652, 0.3250, 0.3205

Protanopia

69.4457, 0.3109, 0.3224

Deuteranopia

69.2122, 0.3266, 0.3195



Tritanopia

69.4170, 0.3209, 0.3122

Trichromacy



Original Color

69.3652, 0.3250, 0.3205

Protanomaly

69.3211, 0.3160, 0.3214

Deuteranomaly

69.0405, 0.3259, 0.3195

Tritanomaly

69.2538, 0.3230, 0.3153

Monochromacy



Original Color

69.3652, 0.3250, 0.3205

Achromatopsia

70.8376, 0.3127, 0.3290

Achromatomaly

70.2338, 0.3172, 0.3258

CSS Examples

Text

The CSS property to change the color of the text to Yxy 69.3652, 0.3250, 0.3205 is called "color". The color property can be set on classes, ids or directly on the HTML element.

This example shows how text in the color `rgb(235, 211, 219)` looks like.

```
.text, #text, p{  
    color:rgb(235, 211, 219)  
}
```

If you want to add a text shadow in that color use the text-shadow property, you can generate a text shadow directly with our [CSS Text Shadow Generator](#).

Here you see how black text with a 4 pixel rgb(235, 211, 219) colored shadow looks like.

```
.shadow{ text-shadow: 4px 4px 2px rgb(235, 211, 219) }
```

Border

The CSS property to change the border of an element to Yxy 69.3652, 0.3250, 0.3205 is called "border". The border property can be set on classes, ids or directly on the HTML element.

This example shows the color as border, it can be applied via the CSS property "border" or "border-color".

```
.border, #border, table{ border:4px solid rgb(235, 211, 219) }
```

If only the border color should be changed use the property `border-color`.

```
.border{ border-color:rgb(235, 211, 219) }
```

If you want to add a box shadow in that color use:

Here you see how a box with a 4 pixel `rgb(235, 211, 219)` colored shadow looks like.

```
.boxshadow{ -moz-box-shadow:4px 4px 4px  
4px rgb(235, 211, 219); -webkit-box-  
shadow:4px 4px 4px 4px rgb(235, 211, 219);  
box-shadow:4px 4px 4px 4px rgb(235, 211,  
219) }
```


Background

The CSS property to change the background color of an element to Yxy 69.3652, 0.3250, 0.3205 is called "background". The background property can be set on classes, ids or directly on the HTML element.

```
.background, #background, body{  
background: rgb(235, 211, 219) }
```

If only the background color should be changed can be used:

```
.background{ background-color: rgb(235,  
211, 219) }
```

This example shows the color as background, it is applied via the CSS property "background".

To optimize and compress your CSS code, you can use our [online CSS compressor and optimizer](#) based on csstidy. If you want to create a linear or radial gradient as background or border, check our [CSS Gradient Generator](#).

Hey! You found this booklet interesting? Support Converting Colors with the new Membership Option!

The pro membership hides all ads, plus gives you double the colors in the color bucket, and more awesome pro features!

[Learn more, Memberships starting at \\$2.50/m!](#)

**Follow me
on Twitter!**

@ConvertingColor