

Converting Colors

$Yxy(69.3093, 0.3413, 0.3480)$

Have a look what the booklet for
Yxy(69.3093, 0.3413, 0.3480)
contains.

Yxy(69.2362, 0.3414, 0.3475)	3
Conversions	4
Details	6
Harmonies	12
Previews	24
Color Blindness Simulation	27
CSS Examples	30

Color

Yxy(69.2362, 0.3414, 0.3475)

Conversions

Conversions Part 1

Format	Color
Hex	EBD5C4
RGB	235, 213, 196
RGB Percent	92%, 84%, 77%
CMY	0.0784, 0.1647, 0.2315
CMYK	0.00, 0.09, 0.17, 0.08
HSL	26°, 49%, 85%
HSV	26°, 17%, 92%
XYZ	68.0208, 69.2362, 61.9838
YIQ	217.6400, 18.5690, -0.6230

Conversions

Conversions Part 2

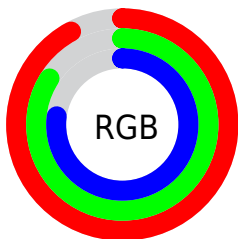
Format	Color
RYB	235, 226, 196
Decimal	15455684
CIELab	86.62, 4.91, 11.18
CIELCh	87, 12.206, 66.302
Yxy	69.2362, 0.3414, 0.3475
Android (android.graphics.Color)	4293645764 (0xFFEBD5C4)
YUV	217.6400, -10.6685, 15.2247
Hunter-Lab	83.2083, 0.3051, 14.0793

Details

The Yxy color **69.2362, 0.3414, 0.3475** is a light color, and the websafe version is hex **CCCCCC**. A complement of this color would be **67.8670, 0.2867, 0.3098**, and the grayscale version is **69.9174, 0.3127, 0.3290**.

A 20% lighter version of the original color is **99.8718, 0.3139, 0.3309**, and **35.9904, 0.3488, 0.3517** is the 20% darker color. If you saturate the color by 10%, you get **61.8555, 0.3623, 0.3594**, and if you desaturate by 10%, it is **77.3354, 0.3233, 0.3361**.

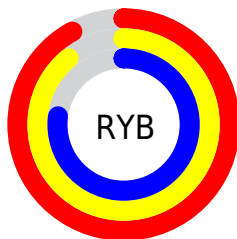
Distribution



Red (92%)

Green (84%)

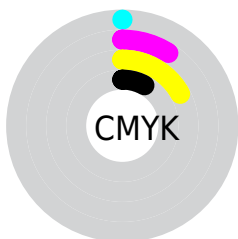
Blue (77%)



Red (92%)

Yellow (89%)

Blue (77%)

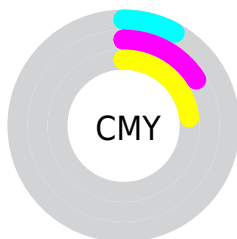


Cyan (0%)

Magenta (9%)

Yellow (17%)

Black (8%)



Cyan (8%)

Magenta (16%)

Yellow (23%)

Brightness & Saturation Gradients

These gradients show how the Yxy color 69.2362, 0.3414, 0.3475 changes by changing the brightness by 10 percent. The first figure shows a shift by +10% for each color and the second figure -10%.

Similar to the brightness gradients but the following saturation gradients show a change of the Yxy color 69.2362, 0.3414, 0.3475 by changing the saturation by 10% instead.

69.2362, 0.3414,
0.3475

69.2362, 0.3414,
0.3475

457.8636, 0.3279,
0.3390

50.9041, 0.3445,
0.3494

118.1189, 0.3367,
0.3446

36.1323, 0.3484,
0.3518

149.4382, 0.3349,
0.3434

24.5364, 0.3533,
0.3548

185.8555, 0.3333,
0.3424

15.7320, 0.3599,
0.3587

227.7550, 0.3320,
0.3416

9.3347, 0.3689,
0.3640

275.5212, 0.3308,
0.3408

4.9601, 0.3821,
0.3714

329.5384, 0.3297,

2.2239, 0.4031,

0.3401

390.1911, 0.3288,
0.3395

0.3826

0.7330, 0.5213,
0.4680

0.0000, 0.0000,
0.0000

69.2362, 0.3414,
0.3475

69.2362, 0.3414,
0.3475

61.8555, 0.3623,
0.3594

77.3354, 0.3233,
0.3361

55.1633, 0.3861,
0.3713

86.1637, 0.3077,
0.3255

49.1409, 0.4128,
0.3828

94.9818, 0.3006,
0.3268

43.7650, 0.4419,
0.3928

96.4056, 0.3005,
0.3290

■ 39.0111, 0.4725,
0.4003

■ 34.8522, 0.5030,
0.4038

■ 31.2589, 0.5310,
0.4022

■ 28.1971, 0.5546,
0.3952

■ 27.2689, 0.5618,
0.3921

Harmonies

Analogous

The Analogous color harmony consists of three colors that are next to each other on the color wheel.



69.2362, 0.3412, 0.3360



69.2362, 0.3414, 0.3475



69.2362, 0.3338, 0.3544

Triad

The Triadic color harmony groups three colors that are evenly spaced from another and form a triangle on the color wheel.



69.2362, 0.3414, 0.3475



69.2362, 0.2926, 0.3347



69.2362, 0.3043, 0.3050

Complementary

The Complementary color scheme is a pair of colors which are on the opposite of each other on the color wheel.



69.2362, 0.3414, 0.3475



67.8670, 0.2867, 0.3098

Split Complementary

Split-complementary colors differ from the complementary color scheme. The scheme consists of three colors, the original color and two neighbors of the complement color.



69.2362, 0.2917, 0.3042



69.2362, 0.3414, 0.3475



69.2362, 0.2851, 0.3209

Square

The Square scheme is like the rectangle color scheme, but the four colors are evenly spaced on the color wheel.



69.2362, 0.3414, 0.3475



69.2362, 0.3055, 0.3471



69.2362, 0.2848, 0.3098



69.2362, 0.3195, 0.3119

Rectangle

The Rectangle color scheme consists of four colors that form a rectangle on the color wheel.



69.2362, 0.3414, 0.3475



69.2362, 0.3254, 0.3552



69.2362, 0.2848, 0.3098



69.2362, 0.2997, 0.3040

Sweetspot

The Sweet Spot groups the original color and five complimentary colors.



69.2393, 0.3414, 0.3475



94.7046, 0.3207, 0.3344



62.1985, 0.3272, 0.3053



20.1152, 0.3218, 0.3352



0.0000, 0.0000, 0.0000



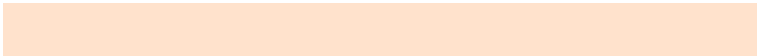
21.4041, 0.3127, 0.3290

Same Dimension

The Same Dimension uses a secret algorithm to generate beautiful new colors.



69.2393, 0.3414, 0.3475



80.1456, 0.3483, 0.3516



79.5980, 0.3381, 0.3676



16.1349, 0.3282, 0.3393



15.4173, 0.5591, 0.3943



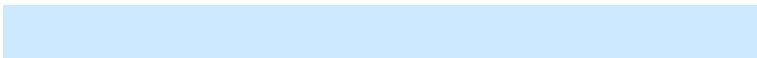
1.3990, 0.5351, 0.4134

Inverse Universe

The Inverse Universe completely reimagines the original color for something new.



67.8670, 0.2867, 0.3098



78.1966, 0.2812, 0.3053



58.3812, 0.2857, 0.2872



15.9582, 0.2981, 0.3185



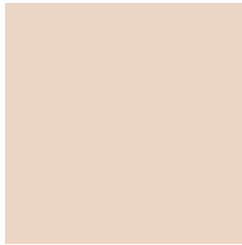
12.8568, 0.1833, 0.1798



1.2005, 0.1896, 0.2024

Previews

White Background



This preview shows how the Yxy color 69.2362, 0.3414, 0.3475 looks on a white background.

Color Contrast Check

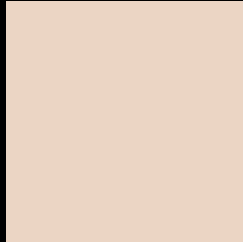
Large Text (above 18pt) WCAG AA × Fail

Any Text WCAG AA × Fail

Large Text (above 18pt) WCAG AAA × Fail

Any Text WCAG AAA × Fail

Black Background



This preview shows how the Yxy color 69.2362, 0.3414, 0.3475 looks on a black background.

Color Contrast Check

Large Text (above 18pt) WCAG AA ✓ Pass

Any Text WCAG AA ✓ Pass

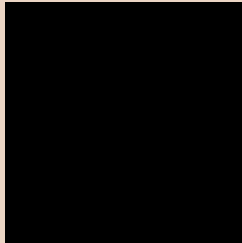
Large Text (above 18pt) WCAG AAA ✓ Pass

Any Text WCAG AAA ✓ Pass

If you want to check with other color combinations, try the [Color Contrast Checker](#).

Yxy 69.2362, 0.3414, 0.3475

Background



This preview shows how black text looks on a background with the Yxy color 69.2362, 0.3414, 0.3475.

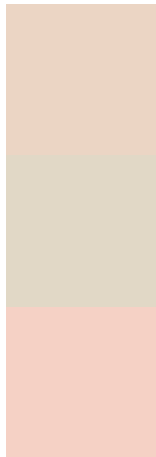


This preview shows how white text looks on a background with the Yxy color 69.2362, 0.3414, 0.3475.

Color Blindness Simulation

Color vision deficiency is a very complex topic, and I could not describe the different causes any better than Wikipedia does, so if you want to learn more, you should check out their [article about color blindness](#).

Dichromacy



Original Color

69.2362, 0.3414, 0.3475

Protanopia

69.1965, 0.3318, 0.3489

Deuteranopia

69.0446, 0.3492, 0.3418



Tritanopia

69.3879, 0.3240, 0.3123

Trichromacy



Original Color

69.2362, 0.3414, 0.3475

Protanomaly

69.2901, 0.3357, 0.3488

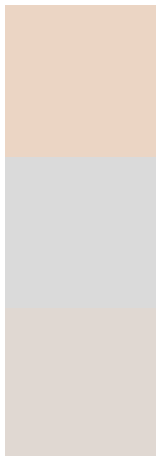
Deuteranomaly

68.8252, 0.3458, 0.3430

Tritanomaly

69.1254, 0.3310, 0.3248

Monochromacy



Original Color

69.2362, 0.3414, 0.3475

Achromatopsia

70.1102, 0.3127, 0.3290

Achromatomaly

69.6122, 0.3227, 0.3356

CSS Examples

Text

The CSS property to change the color of the text to Yxy 69.2362, 0.3414, 0.3475 is called "color". The color property can be set on classes, ids or directly on the HTML element.

This example shows how text in the color `rgb(235, 213, 196)` looks like.

```
.text, #text, p{  
    color:rgb(235, 213, 196)  
}
```

If you want to add a text shadow in that color use the text-shadow property, you can generate a text shadow directly with our [CSS Text Shadow Generator](#).

Here you see how black text with a 4 pixel rgb(235, 213, 196) colored shadow looks like.

```
.shadow{ text-shadow: 4px 4px 2px rgb(235, 213, 196) }
```

Border

The CSS property to change the border of an element to Yxy 69.2362, 0.3414, 0.3475 is called "border". The border property can be set on classes, ids or directly on the HTML element.

This example shows the color as border, it can be applied via the CSS property "border" or "border-color".

```
.border, #border, table{ border:4px solid rgb(235, 213, 196) }
```

If only the border color should be changed use the property `border-color`.

```
.border{ border-color:rgb(235, 213, 196) }
```

If you want to add a box shadow in that color use:

Here you see how a box with a 4 pixel `rgb(235, 213, 196)` colored shadow looks like.

```
.boxshadow{ -moz-box-shadow:4px 4px 4px  
4px rgb(235, 213, 196); -webkit-box-  
shadow:4px 4px 4px 4px rgb(235, 213, 196);  
box-shadow:4px 4px 4px 4px rgb(235, 213,  
196) }
```


Background

The CSS property to change the background color of an element to Yxy 69.2362, 0.3414, 0.3475 is called "background". The background property can be set on classes, ids or directly on the HTML element.

```
.background, #background, body{  
background: rgb(235, 213, 196) }
```

If only the background color should be changed can be used:

```
.background{ background-color: rgb(235,  
213, 196) }
```

This example shows the color as background, it is applied via the CSS property "background".

To optimize and compress your CSS code, you can use our [online CSS compressor and optimizer](#) based on csstidy. If you want to create a linear or radial gradient as background or border, check our [CSS Gradient Generator](#).

Hey! You found this booklet interesting? Support Converting Colors with the new Membership Option!

The pro membership hides all ads, plus gives you double the colors in the color bucket, and more awesome pro features!

[Learn more, Memberships starting at \\$2.50/m!](#)

**Follow me
on Twitter!**

@ConvertingColor