

Converting Colors

$Yxy(69.8445, 0.3265, 0.3365)$

Have a look what the booklet for
Yxy(69.8445, 0.3265, 0.3365)
contains.

Yxy(69.6983, 0.3264, 0.3356)	3
Conversions	4
Details	6
Harmonies	12
Previews	24
Color Blindness Simulation	27
CSS Examples	30

Color

Yxy(69.6983, 0.3264, 0.3356)

Conversions

Conversions Part 1

Format	Color
Hex	E4D7D1
RGB	228, 215, 209
RGB Percent	89%, 84%, 82%
CMY	0.1061, 0.1568, 0.1804
CMYK	0.00, 0.06, 0.08, 0.11
HSL	19°, 26%, 86%
HSV	19°, 8%, 89%
XYZ	67.7876, 69.6983, 70.1967
YIQ	218.2030, 9.6740, 0.8900

Conversions

Conversions Part 2

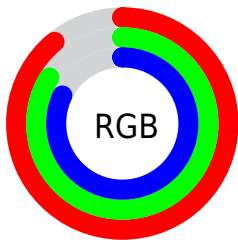
Format	Color
R _Y B	228, 218, 209
Decimal	14997457
CIE Lab	86.85, 3.41, 4.55
CIE LCh	87, 5.687, 53.132
Yxy	69.6983, 0.3264, 0.3356
Android (android.graphics.Color)	4293187537 (0xFFE4D7D1)
YUV	218.2030, -4.5371, 8.5920
Hunter-Lab	83.4855, -1.1632, 8.5873

Details

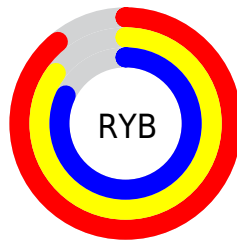
The Yxy color **69.6983, 0.3264, 0.3356** is a light color, and the websafe version is hex **CCCCCC**. A complement of this color would be **71.3422, 0.2999, 0.3223**, and the grayscale version is **70.2815, 0.3127, 0.3290**.

A 20% lighter version of the original color is **100.0000, 0.3127, 0.3290**, and **36.3924, 0.3299, 0.3361** is the 20% darker color. If you saturate the color by 10%, you get **61.1120, 0.3456, 0.3440**, and if you desaturate by 10%, it is **79.2033, 0.3102, 0.3277**.

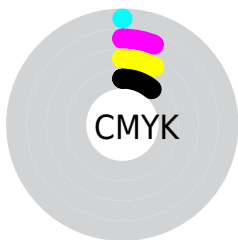
Distribution



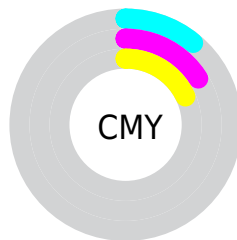
- Red (89%)
- Green (84%)
- Blue (82%)



- Red (89%)
- Yellow (85%)
- Blue (82%)



- Cyan (0%)
- Magenta (6%)
- Yellow (8%)
- Black (11%)



- Cyan (11%)
- Magenta (16%)
- Yellow (18%)

Brightness & Saturation Gradients

These gradients show how the Yxy color 69.6983, 0.3264, 0.3356 changes by changing the brightness by 10 percent. The first figure shows a shift by +10% for each color and the second figure -10%.

Similar to the brightness gradients but the following saturation gradients show a change of the Yxy color 69.6983, 0.3264, 0.3356 by changing the saturation by 10% instead.

69.6983, 0.3264,
0.3356

69.6983, 0.3264,
0.3356

459.4900, 0.3200,
0.3326

51.2806, 0.3279,
0.3363

118.7784, 0.3242,
0.3345

36.4320, 0.3297,
0.3371

150.2096, 0.3233,
0.3341

24.7680, 0.3321,
0.3382

186.7475, 0.3226,
0.3338

15.9043, 0.3352,
0.3397

228.7763, 0.3219,
0.3335

9.4565, 0.3395,
0.3416

276.6806, 0.3213,
0.3332

5.0401, 0.3458,
0.3444

330.8447, 0.3208,

2.2708, 0.3560,

0.3330

0.3487

391.6531, 0.3204,
0.3328

0.7582, 0.3885,
0.3664

0.0000, 0.0000,
0.0000

69.6983, 0.3264,
0.3356

69.6983, 0.3264,
0.3356

61.1120, 0.3456,
0.3440

79.2033, 0.3102,
0.3277

53.4077, 0.3683,
0.3528

89.6442, 0.2965,
0.3204

46.5592, 0.3948,
0.3616

95.2234, 0.2963,
0.3290

40.5360, 0.4253,
0.3699

■ 35.3053, 0.4592,
0.3767

■ 30.8322, 0.4954,
0.3810

■ 27.0788, 0.5313,
0.3814

■ 24.0033, 0.5639,
0.3771

■ 21.5559, 0.5899,
0.3683

Harmonies

Analogous

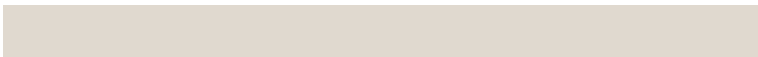
The Analogous color harmony consists of three colors that are next to each other on the color wheel.



69.6983, 0.3246, 0.3297



69.6983, 0.3264, 0.3356



69.6983, 0.3245, 0.3398

Triad

The Triadic color harmony groups three colors that are evenly spaced from another and form a triangle on the color wheel.



69.6983, 0.3264, 0.3356



69.6983, 0.3058, 0.3343



69.6983, 0.3060, 0.3172

Complementary

The Complementary color scheme is a pair of colors which are on the opposite of each other on the color wheel.



69.6983, 0.3264, 0.3356



71.3422, 0.2999, 0.3223

Split Complementary

Split-complementary colors differ from the complementary color scheme. The scheme consists of three colors, the original color and two neighbors of the complement color.



69.6983, 0.3011, 0.3182



69.6983, 0.3264, 0.3356



69.6983, 0.3010, 0.3281

Square

The Square scheme is like the rectangle color scheme, but the four colors are evenly spaced on the color wheel.



69.6983, 0.3264, 0.3356



69.6983, 0.3125, 0.3391



69.6983, 0.2992, 0.3222



69.6983, 0.3128, 0.3192

Rectangle

The Rectangle color scheme consists of four colors that form a rectangle on the color wheel.



69.6983, 0.3264, 0.3356



69.6983, 0.3213, 0.3410



69.6983, 0.2992, 0.3222



69.6983, 0.3041, 0.3172

Sweetspot

The Sweet Spot groups the original color and five complimentary colors.



69.7014, 0.3264, 0.3356



97.4785, 0.3159, 0.3306



67.3517, 0.3178, 0.3150



20.8909, 0.3157, 0.3305



0.0000, 0.0000, 0.0000



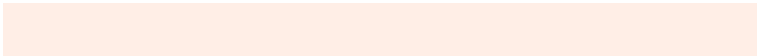
21.4041, 0.3127, 0.3290

Same Dimension

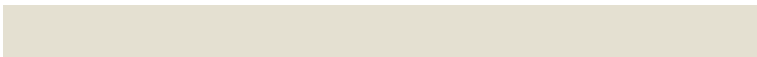
The Same Dimension uses a secret algorithm to generate beautiful new colors.



69.7014, 0.3264, 0.3356



87.8750, 0.3295, 0.3370



74.6467, 0.3254, 0.3457



15.1136, 0.3284, 0.3365



12.4369, 0.5911, 0.3688



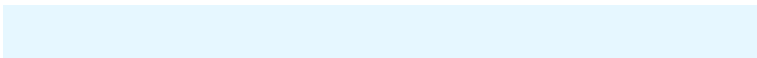
1.0817, 0.5625, 0.3915

Inverse Universe

The Inverse Universe completely reimagines the original color for something new.



71.3422, 0.2999, 0.3223



90.4066, 0.2972, 0.3208



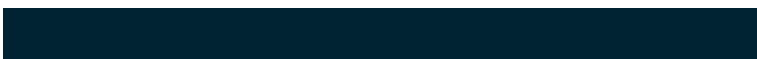
66.4726, 0.2999, 0.3117



15.5214, 0.2981, 0.3213



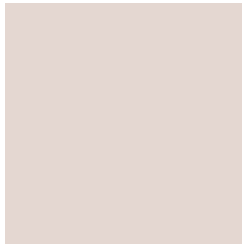
17.0648, 0.1949, 0.2218



1.4266, 0.1998, 0.2393

Previews

White Background



This preview shows how the Yxy color 69.6983, 0.3264, 0.3356 looks on a white background.

Color Contrast Check

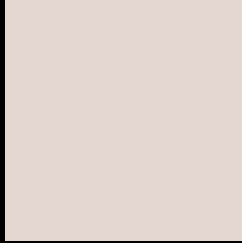
Large Text (above 18pt) WCAG AA × Fail

Any Text WCAG AA × Fail

Large Text (above 18pt) WCAG AAA × Fail

Any Text WCAG AAA × Fail

Black Background



This preview shows how the Yxy color 69.6983, 0.3264, 0.3356 looks on a black background.

Color Contrast Check

Large Text (above 18pt) WCAG AA ✓ Pass

Any Text WCAG AA ✓ Pass

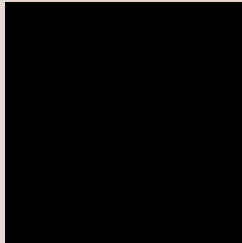
Large Text (above 18pt) WCAG AAA ✓ Pass

Any Text WCAG AAA ✓ Pass

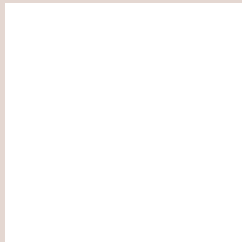
If you want to check with other color combinations, try the [Color Contrast Checker](#).

Yxy 69.6983, 0.3264, 0.3356

Background



This preview shows how black text looks on a background with the Yxy color 69.6983, 0.3264, 0.3356.

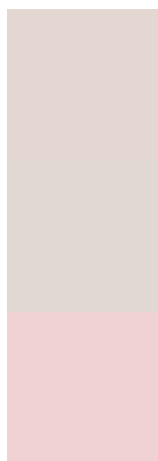


This preview shows how white text looks on a background with the Yxy color 69.6983, 0.3264, 0.3356.

Color Blindness Simulation

Color vision deficiency is a very complex topic, and I could not describe the different causes any better than Wikipedia does, so if you want to learn more, you should check out their [article about color blindness](#).

Dichromacy



Original Color

69.6983, 0.3264, 0.3356

Protanopia

69.9668, 0.3218, 0.3367

Deuteranopia

69.4471, 0.3362, 0.3291



Tritanopia

69.7330, 0.3150, 0.3110

Trichromacy



Original Color

69.6983, 0.3264, 0.3356

Protanomaly

69.7724, 0.3234, 0.3356

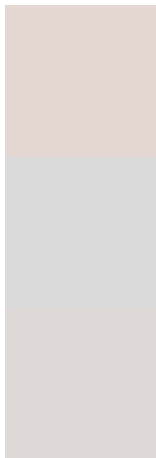
Deuteranomaly

69.5730, 0.3321, 0.3312

Tritanomaly

69.6854, 0.3190, 0.3194

Monochromacy



Original Color

69.6983, 0.3264, 0.3356

Achromatopsia

70.1102, 0.3127, 0.3290

Achromatomaly

70.0616, 0.3177, 0.3312

CSS Examples

Text

The CSS property to change the color of the text to Yxy 69.6983, 0.3264, 0.3356 is called "color". The color property can be set on classes, ids or directly on the HTML element.

This example shows how text in the color `rgb(228, 215, 209)` looks like.

```
.text, #text, p{  
    color:rgb(228, 215, 209)  
}
```

If you want to add a text shadow in that color use the text-shadow property, you can generate a text shadow directly with our [CSS Text Shadow Generator](#).

Here you see how black text with a 4 pixel rgb(228, 215, 209) colored shadow looks like.

```
.shadow{ text-shadow: 4px 4px 2px rgb(228, 215, 209) }
```

Border

The CSS property to change the border of an element to Yxy 69.6983, 0.3264, 0.3356 is called "border". The border property can be set on classes, ids or directly on the HTML element.

This example shows the color as border, it can be applied via the CSS property "border" or "border-color".

```
.border, #border, table{ border:4px solid rgb(228, 215, 209) }
```

If only the border color should be changed use the property `border-color`.

```
.border{ border-color:rgb(228, 215, 209) }
```

If you want to add a box shadow in that color use:

Here you see how a box with a 4 pixel `rgb(228, 215, 209)` colored shadow looks like.

```
.boxshadow{ -moz-box-shadow:4px 4px 4px  
4px rgb(228, 215, 209); -webkit-box-  
shadow:4px 4px 4px 4px rgb(228, 215, 209);  
box-shadow:4px 4px 4px 4px rgb(228, 215,  
209) }
```


Background

The CSS property to change the background color of an element to Yxy 69.6983, 0.3264, 0.3356 is called "background". The background property can be set on classes, ids or directly on the HTML element.

```
.background, #background, body{  
background: rgb(228, 215, 209) }
```

If only the background color should be changed can be used:

```
.background{ background-color: rgb(228,  
215, 209) }
```

This example shows the color as background, it is applied via the CSS property "background".

To optimize and compress your CSS code, you can use our [online CSS compressor and optimizer](#) based on csstidy. If you want to create a linear or radial gradient as background or border, check our [CSS Gradient Generator](#).

Hey! You found this booklet interesting? Support Converting Colors with the new Membership Option!

The pro membership hides all ads, plus gives you double the colors in the color bucket, and more awesome pro features!

[Learn more, Memberships starting at \\$2.50/m!](#)

**Follow me
on Twitter!**

@ConvertingColor