

Converting Colors

$Yxy(70.0065, 0.3483, 0.3461)$

Have a look what the booklet for
Yxy(70.0065, 0.3483, 0.3461)
contains.

Yxy(70.1272, 0.3478, 0.3461)	3
Conversions	4
Details	6
Harmonies	12
Previews	24
Color Blindness Simulation	27
CSS Examples	30

Color

Yxy(70.1272, 0.3478, 0.3461)

Conversions

Conversions Part 1

Format	Color
Hex	F3D4C4
RGB	243, 212, 196
RGB Percent	95%, 83%, 77%
CMY	0.0470, 0.1686, 0.2315
CMYK	0.00, 0.13, 0.19, 0.05
HSL	20°, 66%, 86%
HSV	20°, 19%, 95%
XYZ	70.4717, 70.1272, 62.0224
YIQ	219.4450, 23.6120, 1.5960

Conversions

Conversions Part 2

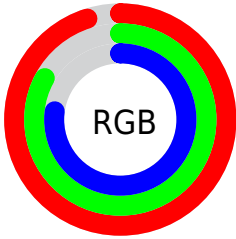
Format	Color
R _Y B	243, 220, 196
Decimal	15979716
CIE Lab	87.06, 8.32, 11.90
CIE LCh	87, 14.521, 55.021
Yxy	70.1272, 0.3478, 0.3461
Android (android.graphics.Color)	4294169796 (0xFFFF3D4C4)
YUV	219.4450, -11.5584, 20.6577
Hunter-Lab	83.7420, 3.6652, 14.7071

Details

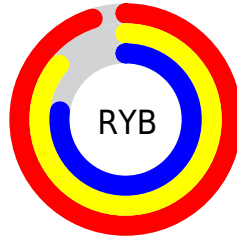
The Yxy color **70.1272, 0.3478, 0.3461** is a light color, and the websafe version is hex **FFCCCC**. A complement of this color would be **73.1323, 0.2826, 0.3113**, and the grayscale version is **71.2349, 0.3127, 0.3290**.

A 20% lighter version of the original color is **99.8718, 0.3139, 0.3309**, and **36.5060, 0.3563, 0.3498** is the 20% darker color. If you saturate the color by 10%, you get **61.4961, 0.3707, 0.3555**, and if you desaturate by 10%, it is **79.7385, 0.3283, 0.3370**.

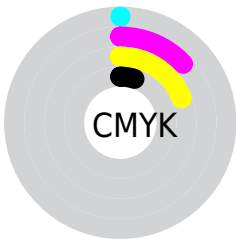
Distribution



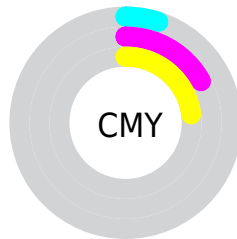
- Red (95%)
- Green (83%)
- Blue (77%)



- Red (95%)
- Yellow (86%)
- Blue (77%)



- Cyan (0%)
- Magenta (13%)
- Yellow (19%)
- Black (5%)




- Cyan (5%)
- Magenta (17%)
- Yellow (23%)

Brightness & Saturation Gradients


These gradients show how the Yxy color 70.1272, 0.3478, 0.3461 changes by changing the brightness by 10 percent. The first figure shows a shift by +10% for each color and the second figure -10%.

Similar to the brightness gradients but the following saturation gradients show a change of the Yxy color 70.1272, 0.3478, 0.3461 by changing the saturation by 10% instead.


 70.1272, 0.3478,
0.3461

 70.1272, 0.3478,
0.3461

460.9965, 0.3313,
0.3384

 51.6302, 0.3516,
0.3478

119.3901, 0.3420,
0.3434

 36.7104, 0.3563,
0.3499


150.9249, 0.3398,
0.3424

 24.9834, 0.3624,
0.3526


187.5744, 0.3379,
0.3415

 16.0647, 0.3703,
0.3559

229.7230, 0.3363,
0.3407

 9.5699, 0.3813,
0.3604

277.7551, 0.3348,
0.3400

 5.1147, 0.3973,
0.3664

332.0551, 0.3335,

 2.3147, 0.4227,

0.3394

0.3750

393.0075, 0.3324,
0.3389

0.7815, 0.5428,
0.4463

0.0000, 0.0000,
0.0000

70.1272, 0.3478,
0.3461

70.1272, 0.3478,
0.3461

61.4961, 0.3707,
0.3555

79.7385, 0.3283,
0.3370

53.8041, 0.3973,
0.3649

90.3507, 0.3117,
0.3285

47.0208, 0.4277,
0.3737

97.7989, 0.3054,
0.3290

41.1108, 0.4612,
0.3808

■ 36.0359, 0.4966,
0.3852

■ 31.7546, 0.5314,
0.3854

■ 28.2212, 0.5625,
0.3807

■ 25.3790, 0.5873,
0.3713

■ 25.2192, 0.5887,
0.3707

Harmonies

Analogous

The Analogous color harmony consists of three colors that are next to each other on the color wheel.



70.1272, 0.3438, 0.3314



70.1272, 0.3478, 0.3461



70.1272, 0.3420, 0.3568

Triad

The Triadic color harmony groups three colors that are evenly spaced from another and form a triangle on the color wheel.



70.1272, 0.3478, 0.3461



70.1272, 0.2941, 0.3417



70.1272, 0.2966, 0.2994

Complementary

The Complementary color scheme is a pair of colors which are on the opposite of each other on the color wheel.



70.1272, 0.3478, 0.3461



73.1323, 0.2826, 0.3113

Split Complementary

Split-complementary colors differ from the complementary color scheme. The scheme consists of three colors, the original color and two neighbors of the complement color.



70.1272, 0.2839, 0.3013



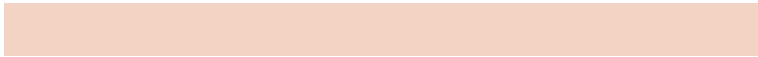
70.1272, 0.3478, 0.3461



70.1272, 0.2825, 0.3253

Square

The Square scheme is like the rectangle color scheme, but the four colors are evenly spaced on the color wheel.



70.1272, 0.3478, 0.3461



70.1272, 0.3108, 0.3547



70.1272, 0.2788, 0.3105



70.1272, 0.3139, 0.3051

Rectangle

The Rectangle color scheme consists of four colors that form a rectangle on the color wheel.



70.1272, 0.3478, 0.3461



70.1272, 0.3336, 0.3601



70.1272, 0.2788, 0.3105



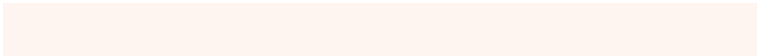
70.1272, 0.2917, 0.2992

Sweetspot

The Sweet Spot groups the original color and five complimentary colors.



70.1304, 0.3478, 0.3461



92.7866, 0.3224, 0.3341



64.0860, 0.3265, 0.2963



19.6974, 0.3236, 0.3347



0.0000, 0.0000, 0.0000



21.4041, 0.3127, 0.3290

Same Dimension

The Same Dimension uses a secret algorithm to generate beautiful new colors.



70.1304, 0.3478, 0.3461



74.5473, 0.3558, 0.3496



82.5623, 0.3434, 0.3697



17.4057, 0.3285, 0.3371



14.0624, 0.5859, 0.3730



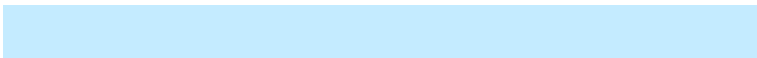
1.4191, 0.5618, 0.3921

Inverse Universe

The Inverse Universe completely reimagines the original color for something new.



73.1323, 0.2826, 0.3113



78.4255, 0.2769, 0.3075



61.2963, 0.2810, 0.2848



17.7511, 0.2980, 0.3207



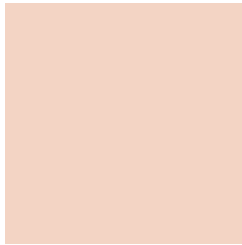
17.6445, 0.1926, 0.2134



1.7410, 0.1971, 0.2296

Previews

White Background



This preview shows how the Yxy color 70.1272, 0.3478, 0.3461 looks on a white background.

Color Contrast Check

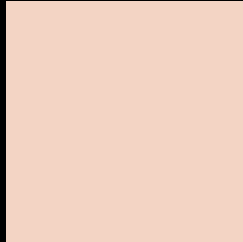
Large Text (above 18pt) WCAG AA × Fail

Any Text WCAG AA × Fail

Large Text (above 18pt) WCAG AAA × Fail

Any Text WCAG AAA × Fail

Black Background



This preview shows how the Yxy color 70.1272, 0.3478, 0.3461 looks on a black background.

Color Contrast Check

Large Text (above 18pt) WCAG AA ✓ Pass

Any Text WCAG AA ✓ Pass

Large Text (above 18pt) WCAG AAA ✓ Pass

Any Text WCAG AAA ✓ Pass

If you want to check with other color combinations, try the [Color Contrast Checker](#).

Yxy 70.1272, 0.3478, 0.3461

Background



This preview shows how black text looks on a background with the Yxy color 70.1272, 0.3478, 0.3461.



This preview shows how white text looks on a background with the Yxy color 70.1272, 0.3478, 0.3461.

Color Blindness Simulation

Color vision deficiency is a very complex topic, and I could not describe the different causes any better than Wikipedia does, so if you want to learn more, you should check out their [article about color blindness](#).

Dichromacy



Original Color

70.1272, 0.3478, 0.3461

Protanopia

70.0801, 0.3325, 0.3488

Deuteranopia

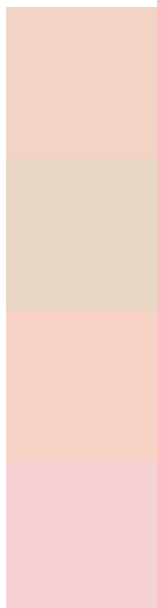
69.8529, 0.3513, 0.3438



Tritanopia

70.2677, 0.3308, 0.3126

Trichromacy



Original Color

70.1272, 0.3478, 0.3461

Protanomaly

70.0017, 0.3380, 0.3475

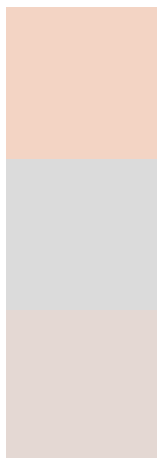
Deuteranomaly

70.1669, 0.3503, 0.3449

Tritanomaly

70.0488, 0.3373, 0.3239

Monochromacy



Original Color

70.1272, 0.3478, 0.3461

Achromatopsia

70.8376, 0.3127, 0.3290

Achromatomaly

70.3089, 0.3249, 0.3345

CSS Examples

Text

The CSS property to change the color of the text to Yxy 70.1272, 0.3478, 0.3461 is called "color". The color property can be set on classes, ids or directly on the HTML element.

This example shows how text in the color `rgb(243, 212, 196)` looks like.

```
.text, #text, p{  
    color:rgb(243, 212, 196)  
}
```

If you want to add a text shadow in that color use the text-shadow property, you can generate a text shadow directly with our [CSS Text Shadow Generator](#).

Here you see how black text with a 4 pixel rgb(243, 212, 196) colored shadow looks like.

```
.shadow{ text-shadow: 4px 4px 2px rgb(243, 212, 196) }
```

Border

The CSS property to change the border of an element to Yxy 70.1272, 0.3478, 0.3461 is called "border". The border property can be set on classes, ids or directly on the HTML element.

This example shows the color as border, it can be applied via the CSS property "border" or "border-color".

```
.border, #border, table{ border:4px solid rgb(243, 212, 196) }
```

If only the border color should be changed use the property border-color.

```
.border{ border-color:rgb(243, 212, 196) }
```

If you want to add a box shadow in that color use:

Here you see how a box with a 4 pixel rgb(243, 212, 196) colored shadow looks like.

```
.boxshadow{ -moz-box-shadow:4px 4px 4px  
4px rgb(243, 212, 196); -webkit-box-  
shadow:4px 4px 4px 4px rgb(243, 212, 196);  
box-shadow:4px 4px 4px 4px rgb(243, 212,  
196) }
```


Background

The CSS property to change the background color of an element to Yxy 70.1272, 0.3478, 0.3461 is called "background". The background property can be set on classes, ids or directly on the HTML element.

```
.background, #background, body{  
background: rgb(243, 212, 196) }
```

If only the background color should be changed can be used:

```
.background{ background-color: rgb(243,  
212, 196) }
```

This example shows the color as background, it is applied via the CSS property "background".

To optimize and compress your CSS code, you can use our [online CSS compressor and optimizer](#) based on csstidy. If you want to create a linear or radial gradient as background or border, check our [CSS Gradient Generator](#).

Hey! You found this booklet interesting? Support Converting Colors with the new Membership Option!

The pro membership hides all ads, plus gives you double the colors in the color bucket, and more awesome pro features!

[Learn more, Memberships starting at \\$2.50/m!](#)

**Follow me
on Twitter!**

@ConvertingColor