

# Converting Colors

$Y_{xy}(70.6072, 0.3245, 0.3253)$

Have a look what the booklet for  
Yxy(70.6072, 0.3245, 0.3253)  
contains.

<b>Yxy(70.4787, 0.3240, 0.3248)</b> .....	3
<b>Conversions</b> .....	4
<b>Details</b> .....	6
<b>Harmonies</b> .....	12
<b>Previews</b> .....	24
<b>Color Blindness Simulation</b> .....	27
<b>CSS Examples</b> .....	30

# Color

**Yxy(70.4787, 0.3240, 0.3248)**

# Conversions

## Conversions Part 1

<b>Format</b>	<b>Color</b>
Hex	E9D6DA
RGB	233, 214, 218
RGB Percent	91%, 84%, 85%
CMY	0.0862, 0.1608, 0.1452
CMYK	0.00, 0.08, 0.06, 0.09
HSL	347°, 30%, 88%
HSV	347°, 8%, 91%
XYZ	70.3051, 70.4787, 76.2073
YIQ	220.1370, 10.0400, 5.2720

# Conversions

## Conversions Part 2

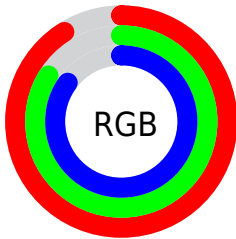
<b>Format</b>	<b>Color</b>
R <sub>Y</sub> B	233, 214, 218
Decimal	15324890
CIE Lab	87.23, 7.23, 0.41
CIE LCh	87, 7.239, 3.265
Yxy	70.4787, 0.3240, 0.3248
Android (android.graphics.Color)	4293514970 (0xFFE9D6DA)
YUV	220.1370, -1.0535, 11.2809
Hunter-Lab	83.9516, 2.5692, 4.9455

# Details

The Yxy color  $70.4787, 0.3240, 0.3248$  is a light color, and the websafe version is hex `CCCCCC`. A complement of this color would be  $78.2411, 0.3025, 0.3332$ , and the grayscale version is  $71.6746, 0.3127, 0.3290$ .

A 20% lighter version of the original color is  $100.0000, 0.3127, 0.3290$ , and  $36.7877, 0.3266, 0.3235$  is the 20% darker color. If you saturate the color by 10%, you get  $58.6065, 0.3408, 0.3193$ , and if you desaturate by 10%, it is  $84.1515, 0.3104, 0.3299$ .

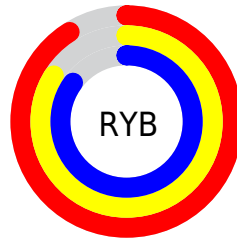
# Distribution



Red (91%)

Green (84%)

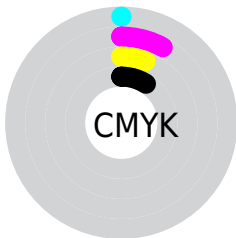
Blue (85%)



Red (91%)

Yellow (84%)

Blue (85%)

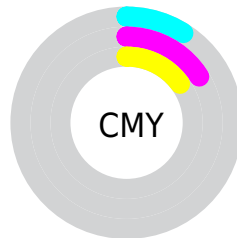


Cyan (0%)

Magenta (8%)

Yellow (6%)

Black (9%)



Cyan (9%)

Magenta (16%)

Yellow (15%)

# Brightness & Saturation Gradients

These gradients show how the Yxy color 70.4787, 0.3240, 0.3248 changes by changing the brightness by 10 percent. The first figure shows a shift by +10% for each color and the second figure -10%.


Similar to the brightness gradients but the following saturation gradients show a change of the Yxy color 70.4787, 0.3240, 0.3248 by changing the saturation by 10% instead.



 70.4787, 0.3240,  
0.3248

 70.4787, 0.3240,  
0.3248


462.2290, 0.3187,  
0.3268

 51.9169, 0.3252,  
0.3243


119.8912, 0.3222,  
0.3255

 36.9388, 0.3267,  
0.3238


151.5106, 0.3215,  
0.3258

 25.1601, 0.3286,  
0.3231


188.2514, 0.3208,  
0.3260

 16.1964, 0.3312,  
0.3221

230.4979, 0.3203,  
0.3262

 9.6632, 0.3346,  
0.3208

278.6345, 0.3199,  
0.3264

 5.1763, 0.3397,  
0.3189

333.0456, 0.3194,

 2.3510, 0.3479,

0.3265

394.1157, 0.3191,  
0.3267

0.3157

0.8005, 0.3641,  
0.3098

0.0000, 0.0000,  
0.0000

70.4787, 0.3240,  
0.3248

70.4787, 0.3240,  
0.3248

58.6065, 0.3408,  
0.3193

84.1515, 0.3104,  
0.3299

48.4509, 0.3615,  
0.3136

96.0559, 0.2994,  
0.3291

39.9349, 0.3870,  
0.3080

96.0656, 0.2993,  
0.3290

32.9721, 0.4176,  
0.3028

■ 27.4682, 0.4535,  
0.2988

■ 23.3183, 0.4934,  
0.2970

■ 20.4039, 0.5347,  
0.2982

■ 18.5851, 0.5729,  
0.3031

■ 17.6670, 0.6035,  
0.3111

# Harmonies

## Analogous

The Analogous color harmony consists of three colors that are next to each other on the color wheel.



70.4787, 0.3159, 0.3182



70.4787, 0.3240, 0.3248



70.4787, 0.3291, 0.3325

# Triad

The Triadic color harmony groups three colors that are evenly spaced from another and form a triangle on the color wheel.



70.4787, 0.3240, 0.3248



70.4787, 0.3183, 0.3440



70.4787, 0.2960, 0.3183

# Complementary

The Complementary color scheme is a pair of colors which are on the opposite of each other on the color wheel.



70.4787, 0.3240, 0.3248



78.2411, 0.3025, 0.3332

# Split Complementary

Split-complementary colors differ from the complementary color scheme. The scheme consists of three colors, the original color and two neighbors of the complement color.



70.4787, 0.2966, 0.3251



70.4787, 0.3240, 0.3248



70.4787, 0.3094, 0.3402

# Square

The Square scheme is like the rectangle color scheme, but the four colors are evenly spaced on the color wheel.



70.4787, 0.3240, 0.3248



70.4787, 0.3258, 0.3437



70.4787, 0.3015, 0.3332



70.4787, 0.2997, 0.3145



# Rectangle

The Rectangle color scheme consists of four colors that form a rectangle on the color wheel.



70.4787, 0.3240, 0.3248



70.4787, 0.3301, 0.3373



70.4787, 0.3015, 0.3332



70.4787, 0.2957, 0.3203

# Sweetspot

The Sweet Spot groups the original color and five complimentary colors.



70.4818, 0.3240, 0.3248



96.5319, 0.3153, 0.3280



70.6201, 0.3107, 0.3089



20.6981, 0.3152, 0.3280



0.0000, 0.0000, 0.0000



21.4041, 0.3127, 0.3290



# Same Dimension

The Same Dimension uses a secret algorithm to generate beautiful new colors.



70.4818, 0.3240, 0.3248



83.5636, 0.3269, 0.3238



73.0478, 0.3262, 0.3348



15.1055, 0.3260, 0.3241



9.9683, 0.6048, 0.3106



0.7964, 0.5671, 0.2898



# Inverse Universe

The Inverse Universe completely reimagines the original color for something new.



70.4818, 0.3240, 0.3248



83.5636, 0.3269, 0.3238



75.4623, 0.3001, 0.3232



15.1055, 0.3260, 0.3241



9.9683, 0.6048, 0.3106

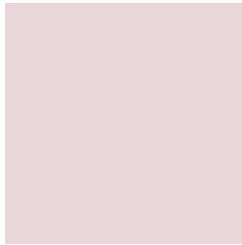


0.7964, 0.5671, 0.2898



# Previews

## White Background



This preview shows how the Yxy color 70.4787, 0.3240, 0.3248 looks on a white background.

## Color Contrast Check

Large Text (above 18pt) WCAG AA × Fail

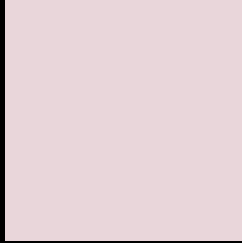
Any Text WCAG AA × Fail

Large Text (above 18pt) WCAG AAA × Fail

Any Text WCAG AAA × Fail



# Black Background



This preview shows how the Yxy color 70.4787, 0.3240, 0.3248 looks on a black background.

## Color Contrast Check

Large Text (above 18pt) WCAG AA ✓ Pass

Any Text WCAG AA ✓ Pass

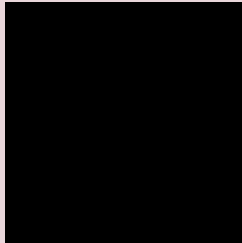
Large Text (above 18pt) WCAG AAA ✓ Pass

Any Text WCAG AAA ✓ Pass

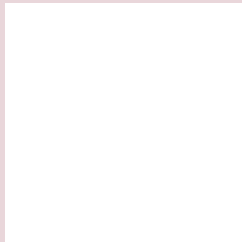
If you want to check with other color combinations, try the [Color Contrast Checker](#).

**Yxy 70.4787, 0.3240, 0.3248**

## **Background**



This preview shows how black text looks on a background with the Yxy color 70.4787, 0.3240, 0.3248.

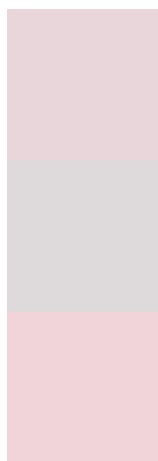


This preview shows how white text looks on a background with the Yxy color 70.4787, 0.3240, 0.3248.

# Color Blindness Simulation

Color vision deficiency is a very complex topic, and I could not describe the different causes any better than Wikipedia does, so if you want to learn more, you should check out their [article about color blindness](#).

## Dichromacy



### Original Color

70.4787, 0.3240, 0.3248

### Protanopia

70.8397, 0.3143, 0.3268

### Deuteranopia

70.6742, 0.3294, 0.3227



## Tritanopia

70.4063, 0.3180, 0.3111

# Trichromacy



## Original Color

70.4787, 0.3240, 0.3248

## Protanomaly

70.9089, 0.3179, 0.3269

## Deuteranomaly

70.6550, 0.3271, 0.3238

## Tritanomaly

70.5172, 0.3199, 0.3163

# Monochromacy



## Original Color

70.4787, 0.3240, 0.3248

## Achromatopsia

71.5694, 0.3127, 0.3290

## Achromatomaly

71.2648, 0.3171, 0.3279

# CSS Examples

## Text

The CSS property to change the color of the text to Yxy 70.4787, 0.3240, 0.3248 is called "color". The color property can be set on classes, ids or directly on the HTML element.

This example shows how text in the color `rgb(233, 214, 218)` looks like.

```
.text, #text, p{  
    color:rgb(233, 214, 218)  
}
```

If you want to add a text shadow in that color use the text-shadow property, you can generate a text shadow directly with our [CSS Text Shadow Generator](#).

Here you see how black text with a 4 pixel rgb(233, 214, 218) colored shadow looks like.

```
.shadow{ text-shadow: 4px 4px 2px rgb(233, 214, 218) }
```

## Border

The CSS property to change the border of an element to Yxy 70.4787, 0.3240, 0.3248 is called "border". The border property can be set on classes, ids or directly on the HTML element.

This example shows the color as border, it can be applied via the CSS property "border" or "border-color".

```
.border, #border, table{ border:4px solid rgb(233, 214, 218) }
```

If only the border color should be changed use the property `border-color`.

```
.border{ border-color:rgb(233, 214, 218) }
```

If you want to add a box shadow in that color use:

Here you see how a box with a 4 pixel `rgb(233, 214, 218)` colored shadow looks like.

```
.boxshadow{ -moz-box-shadow:4px 4px 4px  
4px rgb(233, 214, 218); -webkit-box-  
shadow:4px 4px 4px 4px rgb(233, 214, 218);  
box-shadow:4px 4px 4px 4px rgb(233, 214,  
218) }
```



# Background

The CSS property to change the background color of an element to Yxy 70.4787, 0.3240, 0.3248 is called "background". The background property can be set on classes, ids or directly on the HTML element.

```
.background, #background, body{  
background: rgb(233, 214, 218) }
```

If only the background color should be changed can be used:

```
.background{ background-color: rgb(233,  
214, 218) }
```

This example shows the color as background, it is applied via the CSS property "background".

To optimize and compress your CSS code, you can use our [online CSS compressor and optimizer](#) based on csstidy. If you want to create a linear or radial gradient as background or border, check our [CSS Gradient Generator](#).

Hey! You found this booklet interesting? Support Converting Colors with the new Membership Option!

The pro membership hides all ads, plus gives you double the colors in the color bucket, and more awesome pro features!

**[Learn more, Memberships starting at \\$2.50/m!](#)**

**Follow me  
on Twitter!**

@ConvertingColor