

Converting Colors

$Yxy(70.6433, 0.3297, 0.3349)$

Have a look what the booklet for
Yxy(70.6433, 0.3297, 0.3349)
contains.

Yxy(70.5777, 0.3295, 0.3344)	3
Conversions	4
Details	6
Harmonies	12
Previews	24
Color Blindness Simulation	27
CSS Examples	30

Color

Yxy(70.5777, 0.3295, 0.3344)

Conversions

Conversions Part 1

Format	Color
Hex	E9D7D2
RGB	233, 215, 210
RGB Percent	91%, 84%, 82%
CMY	0.0862, 0.1569, 0.1764
CMYK	0.00, 0.08, 0.10, 0.09
HSL	13°, 34%, 87%
HSV	13°, 10%, 91%
XYZ	69.5435, 70.5777, 70.9365
YIQ	219.8120, 12.3330, 2.2610

Conversions

Conversions Part 2

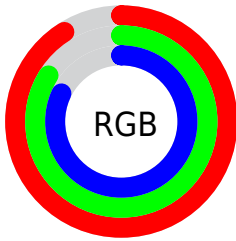
Format	Color
R _Y B	233, 216, 210
Decimal	15325138
CIE Lab	87.28, 5.38, 4.69
CIE LCh	87, 7.136, 41.067
Yxy	70.5777, 0.3295, 0.3344
Android (android.graphics.Color)	4293515218 (0xFFE9D7D2)
YUV	219.8120, -4.8373, 11.5659
Hunter-Lab	84.0105, 0.7430, 8.7443

Details

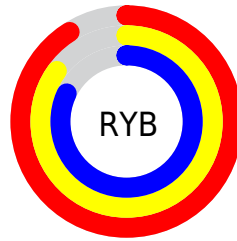
The Yxy color **70.5777, 0.3295, 0.3344** is a light color, and the websafe version is hex **CCCCCC**. A complement of this color would be **75.0936, 0.2975, 0.3235**, and the grayscale version is **71.4641, 0.3127, 0.3290**.

A 20% lighter version of the original color is **100.0000, 0.3127, 0.3290**, and **36.8890, 0.3330, 0.3347** is the 20% darker color. If you saturate the color by 10%, you get **60.7199, 0.3500, 0.3402**, and if you desaturate by 10%, it is **81.6479, 0.3125, 0.3289**.

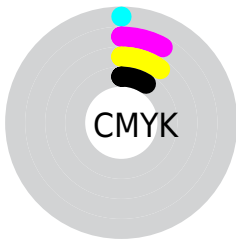
Distribution



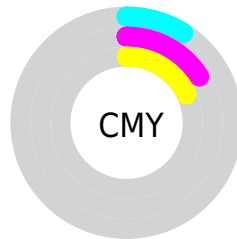
- Red (91%)
- Green (84%)
- Blue (82%)



- Red (91%)
- Yellow (85%)
- Blue (82%)



- Cyan (0%)
- Magenta (8%)
- Yellow (10%)
- Black (9%)



- Cyan (9%)
- Magenta (16%)
- Yellow (18%)

Brightness & Saturation Gradients


These gradients show how the Yxy color 70.5777, 0.3295, 0.3344 changes by changing the brightness by 10 percent. The first figure shows a shift by +10% for each color and the second figure -10%.

Similar to the brightness gradients but the following saturation gradients show a change of the Yxy color 70.5777, 0.3295, 0.3344 by changing the saturation by 10% instead.

 70.5777, 0.3295,
0.3344

 70.5777, 0.3295,
0.3344


462.5758, 0.3217,
0.3319

 51.9976, 0.3313,
0.3350


120.0322, 0.3268,
0.3336

 37.0032, 0.3336,
0.3356


151.6755, 0.3257,
0.3332

 25.2100, 0.3364,
0.3365


188.4419, 0.3248,
0.3329

 16.2336, 0.3402,
0.3376

230.7160, 0.3240,
0.3327

 9.6896, 0.3454,
0.3391

278.8820, 0.3233,
0.3325

 5.1936, 0.3531,
0.3411

333.3244, 0.3227,

 2.3613, 0.3654,

0.3323

0.3443

394.4275, 0.3221,
0.3321

0.8059, 0.3986,
0.3575

0.0000, 0.0000,
0.0000

70.5777, 0.3295,
0.3344

70.5777, 0.3295,
0.3344

60.7199, 0.3500,
0.3402

81.6479, 0.3125,
0.3289

52.0239, 0.3746,
0.3463

93.8557, 0.2993,
0.3255

44.4494, 0.4040,
0.3523

96.0673, 0.2994,
0.3290

37.9499, 0.4382,
0.3578

■ 32.4761, 0.4767,
0.3619

■ 27.9744, 0.5177,
0.3637

■ 24.3860, 0.5576,
0.3621

■ 21.6455, 0.5917,
0.3568

■ 19.6720, 0.6164,
0.3486

Harmonies

Analogous

The Analogous color harmony consists of three colors that are next to each other on the color wheel.



70.5777, 0.3255, 0.3268



70.5777, 0.3295, 0.3344



70.5777, 0.3289, 0.3407

Triad

The Triadic color harmony groups three colors that are evenly spaced from another and form a triangle on the color wheel.



70.5777, 0.3295, 0.3344



70.5777, 0.3073, 0.3384



70.5777, 0.3015, 0.3143

Complementary

The Complementary color scheme is a pair of colors which are on the opposite of each other on the color wheel.



70.5777, 0.3295, 0.3344



75.0936, 0.2975, 0.3235

Split Complementary

Split-complementary colors differ from the complementary color scheme. The scheme consists of three colors, the original color and two neighbors of the complement color.



70.5777, 0.2968, 0.3171



70.5777, 0.3295, 0.3344



70.5777, 0.3001, 0.3311

Square

The Square scheme is like the rectangle color scheme, but the four colors are evenly spaced on the color wheel.



70.5777, 0.3295, 0.3344



70.5777, 0.3160, 0.3432



70.5777, 0.2962, 0.3233



70.5777, 0.3093, 0.3153

Rectangle

The Rectangle color scheme consists of four colors that form a rectangle on the color wheel.



70.5777, 0.3295, 0.3344



70.5777, 0.3260, 0.3433



70.5777, 0.2962, 0.3233



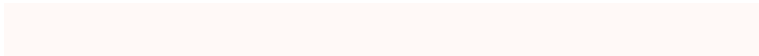
70.5777, 0.2995, 0.3148

Sweetspot

The Sweet Spot groups the original color and five complimentary colors.



70.5808, 0.3295, 0.3344



95.7533, 0.3175, 0.3306



69.0294, 0.3173, 0.3099



20.2572, 0.3188, 0.3310



0.0000, 0.0000, 0.0000



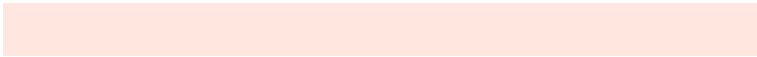
21.4041, 0.3127, 0.3290

Same Dimension

The Same Dimension uses a secret algorithm to generate beautiful new colors.



70.5808, 0.3295, 0.3344



83.8331, 0.3337, 0.3357



76.6471, 0.3282, 0.3465



15.5832, 0.3287, 0.3342



11.2965, 0.6143, 0.3504



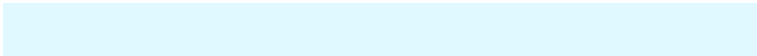
1.0254, 0.5881, 0.3713

Inverse Universe

The Inverse Universe completely reimagines the original color for something new.



75.0936, 0.2975, 0.3235



90.4928, 0.2941, 0.3223



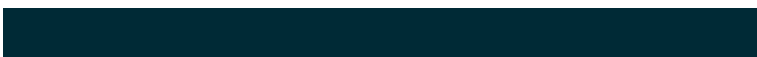
68.9718, 0.2974, 0.3108



16.5356, 0.2981, 0.3238



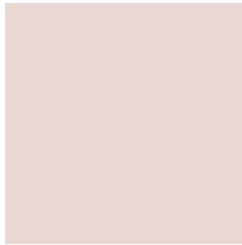
22.6284, 0.2049, 0.2578



1.9141, 0.2080, 0.2688

Previews

White Background



This preview shows how the Yxy color 70.5777, 0.3295, 0.3344 looks on a white background.

Color Contrast Check

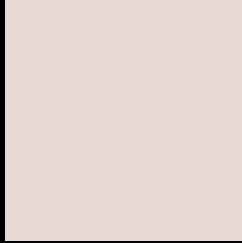
Large Text (above 18pt) WCAG AA × Fail

Any Text WCAG AA × Fail

Large Text (above 18pt) WCAG AAA × Fail

Any Text WCAG AAA × Fail

Black Background



This preview shows how the Yxy color 70.5777, 0.3295, 0.3344 looks on a black background.

Color Contrast Check

Large Text (above 18pt) WCAG AA ✓ Pass

Any Text WCAG AA ✓ Pass

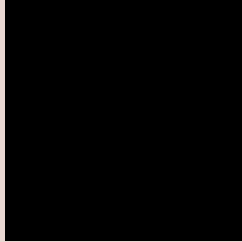
Large Text (above 18pt) WCAG AAA ✓ Pass

Any Text WCAG AAA ✓ Pass

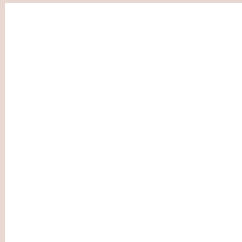
If you want to check with other color combinations, try the [Color Contrast Checker](#).

Yxy 70.5777, 0.3295, 0.3344

Background



This preview shows how black text looks on a background with the Yxy color 70.5777, 0.3295, 0.3344.

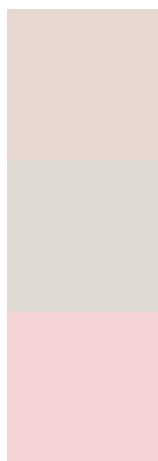


This preview shows how white text looks on a background with the Yxy color 70.5777, 0.3295, 0.3344.

Color Blindness Simulation

Color vision deficiency is a very complex topic, and I could not describe the different causes any better than Wikipedia does, so if you want to learn more, you should check out their [article about color blindness](#).

Dichromacy



Original Color

70.5777, 0.3295, 0.3344

Protanopia

70.7436, 0.3211, 0.3356

Deuteranopia

70.3464, 0.3369, 0.3291



Tritanopia

70.5770, 0.3187, 0.3112

Trichromacy



Original Color

70.5777, 0.3295, 0.3344

Protanomaly

70.6598, 0.3241, 0.3356

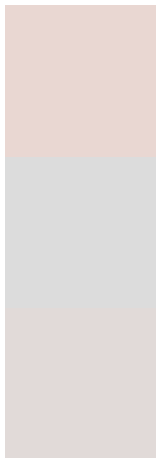
Deuteranomaly

70.1408, 0.3337, 0.3301

Tritanomaly

70.5246, 0.3227, 0.3195

Monochromacy



Original Color

70.5777, 0.3295, 0.3344

Achromatopsia

71.5694, 0.3127, 0.3290

Achromatomaly

71.1082, 0.3191, 0.3312

CSS Examples

Text

The CSS property to change the color of the text to Yxy 70.5777, 0.3295, 0.3344 is called "color". The color property can be set on classes, ids or directly on the HTML element.

This example shows how text in the color `rgb(233, 215, 210)` looks like.

```
.text, #text, p{  
    color:rgb(233, 215, 210)  
}
```

If you want to add a text shadow in that color use the text-shadow property, you can generate a text shadow directly with our [CSS Text Shadow Generator](#).

Here you see how black text with a 4 pixel rgb(233, 215, 210) colored shadow looks like.

```
.shadow{ text-shadow: 4px 4px 2px rgb(233, 215, 210) }
```

Border

The CSS property to change the border of an element to Yxy 70.5777, 0.3295, 0.3344 is called "border". The border property can be set on classes, ids or directly on the HTML element.

This example shows the color as border, it can be applied via the CSS property "border" or "border-color".

```
.border, #border, table{ border:4px solid rgb(233, 215, 210) }
```

If only the border color should be changed use the property `border-color`.

```
.border{ border-color:rgb(233, 215, 210) }
```

If you want to add a box shadow in that color use:

Here you see how a box with a 4 pixel `rgb(233, 215, 210)` colored shadow looks like.

```
.boxshadow{ -moz-box-shadow:4px 4px 4px  
4px rgb(233, 215, 210); -webkit-box-  
shadow:4px 4px 4px 4px rgb(233, 215, 210);  
box-shadow:4px 4px 4px 4px rgb(233, 215,  
210) }
```


Background

The CSS property to change the background color of an element to Yxy 70.5777, 0.3295, 0.3344 is called "background". The background property can be set on classes, ids or directly on the HTML element.

```
.background, #background, body{  
background: rgb(233, 215, 210) }
```

If only the background color should be changed can be used:

```
.background{ background-color: rgb(233,  
215, 210) }
```

This example shows the color as background, it is applied via the CSS property "background".

To optimize and compress your CSS code, you can use our [online CSS compressor and optimizer](#) based on csstidy. If you want to create a linear or radial gradient as background or border, check our [CSS Gradient Generator](#).

Hey! You found this booklet interesting? Support Converting Colors with the new Membership Option!

The pro membership hides all ads, plus gives you double the colors in the color bucket, and more awesome pro features!

[Learn more, Memberships starting at \\$2.50/m!](#)

**Follow me
on Twitter!**

@ConvertingColor