

# Converting Colors

$Y_{xy}(72.2573, 0.3234, 0.3276)$

Have a look what the booklet for  
Yxy(72.2573, 0.3234, 0.3276)  
contains.

<b>Yxy(72.0638, 0.3230, 0.3269)</b> .....	3
<b>Conversions</b> .....	4
<b>Details</b> .....	6
<b>Harmonies</b> .....	12
<b>Previews</b> .....	24
<b>Color Blindness Simulation</b> .....	27
<b>CSS Examples</b> .....	30

# Color

**Yxy(72.0638, 0.3230, 0.3269)**

# Conversions

## Conversions Part 1

Format	Color
Hex	E9D9DB
RGB	233, 217, 219
RGB Percent	91%, 85%, 86%
CMY	0.0863, 0.1490, 0.1412
CMYK	0.00, 0.07, 0.06, 0.09
HSL	352°, 27%, 88%
HSV	352°, 7%, 91%
XYZ	71.2041, 72.0638, 77.1781
YIQ	222.0120, 8.8940, 4.0140

# Conversions

## Conversions Part 2

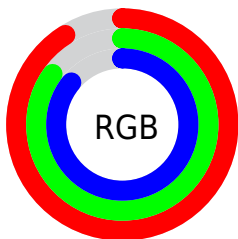
Format	Color
R <sub>Y</sub> B	233, 217, 219
Decimal	15325659
CIE Lab	88.00, 5.83, 0.99
CIE LCh	88, 5.918, 9.590
Yxy	72.0638, 0.3230, 0.3269
Android (android.graphics.Color)	4293515739 (0xFFE9D9DB)
YUV	222.0120, -1.4849, 9.6365
Hunter-Lab	84.8904, 1.1634, 5.5197

# Details

The Yxy color **72.0638, 0.3230, 0.3269** is a light color, and the websafe version is hex **CCCCCC**. A complement of this color would be **78.8010, 0.3033, 0.3311**, and the grayscale version is **73.0640, 0.3127, 0.3290**.

A 20% lighter version of the original color is **100.0000, 0.3127, 0.3290**, and **37.8681, 0.3253, 0.3263** is the 20% darker color. If you saturate the color by 10%, you get **59.8821, 0.3410, 0.3237**, and if you desaturate by 10%, it is **86.0790, 0.3085, 0.3299**.

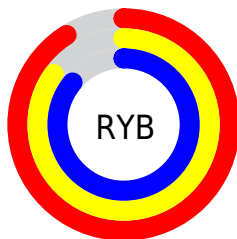
# Distribution



Red (91%)

Green (85%)

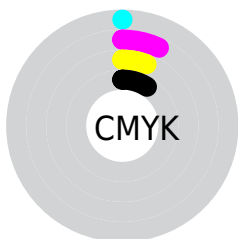
Blue (86%)



Red (91%)

Yellow (85%)

Blue (86%)

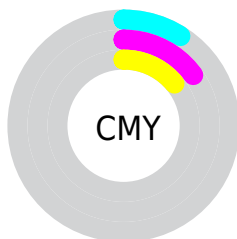


Cyan (0%)

Magenta (7%)

Yellow (6%)

Black (9%)



Cyan (9%)

Magenta (15%)


Yellow (14%)

# Brightness & Saturation Gradients

These gradients show how the Yxy color 72.0638, 0.3230, 0.3269 changes by changing the brightness by 10 percent. The first figure shows a shift by +10% for each color and the second figure -10%.


Similar to the brightness gradients but the following saturation gradients show a change of the Yxy color 72.0638, 0.3230, 0.3269 by changing the saturation by 10% instead.




 72.0638, 0.3230,  
0.3269

 72.0638, 0.3230,  
0.3269


467.7636, 0.3182,  
0.3279

 53.2108, 0.3241,  
0.3267

122.1472, 0.3213,  
0.3272

 37.9711, 0.3255,  
0.3264


154.1464, 0.3207,  
0.3274

 25.9602, 0.3272,  
0.3260

191.2965, 0.3201,  
0.3275

 16.7939, 0.3295,  
0.3255

233.9819, 0.3197,  
0.3276

 10.0877, 0.3326,  
0.3248

282.5868, 0.3192,  
0.3277

 5.4571, 0.3371,  
0.3238

337.4959, 0.3189,

 2.5179, 0.3443,

0.3278

0.3222

399.0933, 0.3185,  
0.3278

0.8856, 0.3578,  
0.3193

0.0000, 0.0000,  
0.0000

72.0638, 0.3230,  
0.3269

72.0638, 0.3230,  
0.3269

59.8821, 0.3410,  
0.3237

86.0790, 0.3085,  
0.3299

49.4492, 0.3635,  
0.3203

96.0640, 0.2993,  
0.3290

40.6874, 0.3911,  
0.3169

33.5098, 0.4246,  
0.3139

■ 27.8216, 0.4640,  
0.3116

■ 23.5177, 0.5076,  
0.3107

■ 20.4795, 0.5519,  
0.3119

■ 18.5682, 0.5913,  
0.3155

■ 17.6072, 0.6199,  
0.3210

# Harmonies

## Analogous

The Analogous color harmony consists of three colors that are next to each other on the color wheel.



72.0638, 0.3168, 0.3212



72.0638, 0.3230, 0.3269



72.0638, 0.3264, 0.3332

# Triad

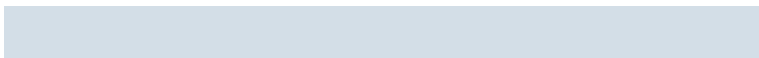
The Triadic color harmony groups three colors that are evenly spaced from another and form a triangle on the color wheel.



72.0638, 0.3230, 0.3269



72.0638, 0.3158, 0.3408



72.0638, 0.2994, 0.3194

# Complementary

The Complementary color scheme is a pair of colors which are on the opposite of each other on the color wheel.



72.0638, 0.3230, 0.3269



78.8010, 0.3033, 0.3311

# Split Complementary

Split-complementary colors differ from the complementary color scheme. The scheme consists of three colors, the original color and two neighbors of the complement color.



72.0638, 0.2992, 0.3246



72.0638, 0.3230, 0.3269



72.0638, 0.3086, 0.3370

# Square

The Square scheme is like the rectangle color scheme, but the four colors are evenly spaced on the color wheel.



72.0638, 0.3230, 0.3269



72.0638, 0.3222, 0.3413



72.0638, 0.3025, 0.3310



72.0638, 0.3032, 0.3169



# Rectangle

The Rectangle color scheme consists of four colors that form a rectangle on the color wheel.



72.0638, 0.3230, 0.3269



72.0638, 0.3267, 0.3369



72.0638, 0.3025, 0.3310



72.0638, 0.2990, 0.3209

# Sweetspot

The Sweet Spot groups the original color and five complimentary colors.



72.0669, 0.3230, 0.3269



96.5050, 0.3156, 0.3284



72.4786, 0.3120, 0.3122



20.6926, 0.3154, 0.3284



0.0000, 0.0000, 0.0000



21.4041, 0.3127, 0.3290



# Same Dimension

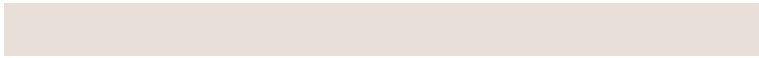
The Same Dimension uses a secret algorithm to generate beautiful new colors.



72.0669, 0.3230, 0.3269



86.5712, 0.3249, 0.3265



75.0401, 0.3238, 0.3352



15.0847, 0.3273, 0.3261



9.8903, 0.6240, 0.3211



0.7866, 0.5937, 0.3044



# Inverse Universe

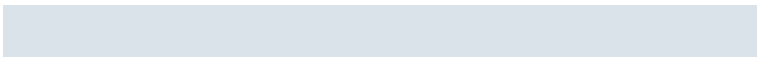
The Inverse Universe completely reimagines the original color for something new.



72.0669, 0.3230, 0.3269



86.5712, 0.3249, 0.3265



75.6486, 0.3021, 0.3227



15.0847, 0.3273, 0.3261



9.8903, 0.6240, 0.3211

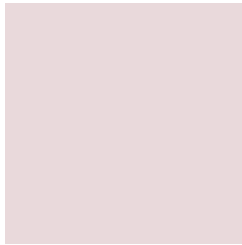


0.7866, 0.5937, 0.3044



# Previews

## White Background



This preview shows how the Yxy color 72.0638, 0.3230, 0.3269 looks on a white background.

## Color Contrast Check

Large Text (above 18pt) WCAG AA × Fail

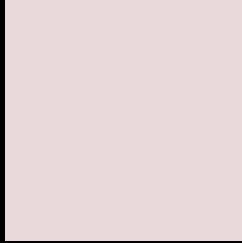
Any Text WCAG AA × Fail

Large Text (above 18pt) WCAG AAA × Fail

Any Text WCAG AAA × Fail



# Black Background



This preview shows how the Yxy color 72.0638, 0.3230, 0.3269 looks on a black background.

## Color Contrast Check

Large Text (above 18pt) WCAG AA ✓ Pass

Any Text WCAG AA ✓ Pass

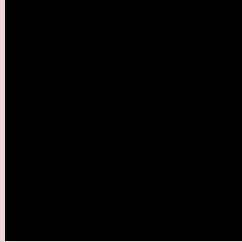
Large Text (above 18pt) WCAG AAA ✓ Pass

Any Text WCAG AAA ✓ Pass

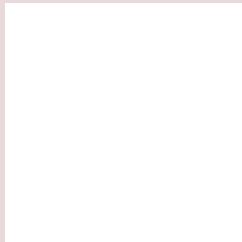
If you want to check with other color combinations, try the [Color Contrast Checker](#).

**Yxy 72.0638, 0.3230, 0.3269**

## **Background**



This preview shows how black text looks on a background with the Yxy color 72.0638, 0.3230, 0.3269.



This preview shows how white text looks on a background with the Yxy color 72.0638, 0.3230, 0.3269.

# Color Blindness Simulation

Color vision deficiency is a very complex topic, and I could not describe the different causes any better than Wikipedia does, so if you want to learn more, you should check out their [article about color blindness](#).

## Dichromacy



### Original Color

72.0638, 0.3230, 0.3269

### Protanopia

72.4144, 0.3156, 0.3279

### Deuteranopia

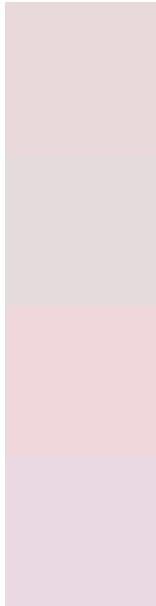
72.1377, 0.3293, 0.3228



## Tritanopia

72.0892, 0.3157, 0.3112

# Trichromacy



## Original Color

72.0638, 0.3230, 0.3269

## Protanomaly

72.3243, 0.3185, 0.3279

## Deuteranomaly

72.1189, 0.3269, 0.3238

## Tritanomaly

72.1502, 0.3183, 0.3174

# Monochromacy



## Original Color

72.0638, 0.3230, 0.3269

## Achromatopsia

73.0461, 0.3127, 0.3290

## Achromatomaly

72.5756, 0.3163, 0.3279

# CSS Examples

## Text

The CSS property to change the color of the text to Yxy 72.0638, 0.3230, 0.3269 is called "color". The color property can be set on classes, ids or directly on the HTML element.

This example shows how text in the color `rgb(233, 217, 219)` looks like.

```
.text, #text, p{  
    color:rgb(233, 217, 219)  
}
```

If you want to add a text shadow in that color use the text-shadow property, you can generate a text shadow directly with our [CSS Text Shadow Generator](#).

Here you see how black text with a 4 pixel rgb(233, 217, 219) colored shadow looks like.

```
.shadow{ text-shadow: 4px 4px 2px rgb(233, 217, 219) }
```

## Border

The CSS property to change the border of an element to Yxy 72.0638, 0.3230, 0.3269 is called "border". The border property can be set on classes, ids or directly on the HTML element.

This example shows the color as border, it can be applied via the CSS property "border" or "border-color".

```
.border, #border, table{ border:4px solid rgb(233, 217, 219) }
```

If only the border color should be changed use the property border-color.

```
.border{ border-color:rgb(233, 217, 219) }
```

If you want to add a box shadow in that color use:

Here you see how a box with a 4 pixel rgb(233, 217, 219) colored shadow looks like.

```
.boxshadow{ -moz-box-shadow:4px 4px 4px  
4px rgb(233, 217, 219); -webkit-box-  
shadow:4px 4px 4px 4px rgb(233, 217, 219);  
box-shadow:4px 4px 4px 4px rgb(233, 217,  
219) }
```



# Background

The CSS property to change the background color of an element to Yxy 72.0638, 0.3230, 0.3269 is called "background". The background property can be set on classes, ids or directly on the HTML element.

```
.background, #background, body{  
background: rgb(233, 217, 219) }
```

If only the background color should be changed can be used:

```
.background{ background-color: rgb(233,  
217, 219) }
```

This example shows the color as background, it is applied via the CSS property "background".

To optimize and compress your CSS code, you can use our [online CSS compressor and optimizer](#) based on csstidy. If you want to create a linear or radial gradient as background or border, check our [CSS Gradient Generator](#).

Hey! You found this booklet interesting? Support Converting Colors with the new Membership Option!

The pro membership hides all ads, plus gives you double the colors in the color bucket, and more awesome pro features!

**[Learn more, Memberships starting at \\$2.50/m!](#)**

**Follow me  
on Twitter!**

@ConvertingColor