

Converting Colors

$Yxy(72.4488, 0.3227, 0.3289)$

Have a look what the booklet for
Yxy(72.4488, 0.3227, 0.3289)
contains.

| | |
|---|----|
| Yxy(72.3606, 0.3229, 0.3290) | 3 |
| Conversions | 4 |
| Details | 6 |
| Harmonies | 12 |
| Previews | 24 |
| Color Blindness Simulation | 27 |
| CSS Examples | 30 |

Color

Yxy(72.3606, 0.3229, 0.3290)

Conversions

Conversions Part 1

| Format | Color |
|-------------|---------------------------|
| Hex | E8DADA |
| RGB | 232, 218, 218 |
| RGB Percent | 91%, 85%, 85% |
| CMY | 0.0900, 0.1451, 0.1450 |
| CMYK | 0.00, 0.06, 0.06, 0.09 |
| HSL | 360°, 23%, 88% |
| HSV | 360°, 6%, 91% |
| XYZ | 71.0190, 72.3606, 76.5615 |
| YIQ | 222.1860, 8.3440, 2.9680 |

Conversions

Conversions Part 2

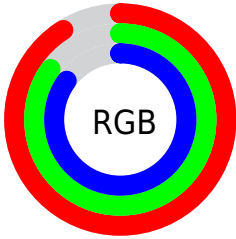
| Format | Color |
|-------------------------------------|------------------------------|
| R _Y B | 232, 218, 218 |
| Decimal | 15260378 |
| CIE Lab | 88.14, 4.83, 1.71 |
| CIE LCh | 88, 5.120, 19.487 |
| Yxy | 72.3606, 0.3229, 0.3290 |
| Android (android.graphics.Color) | 4293450458 (0xFFE8DADA) |
| YUV | 222.1860, -2.0637, 8.6069 |
| Hunter-Lab | 85.0650, 0.1620, 6.1825 |

Details

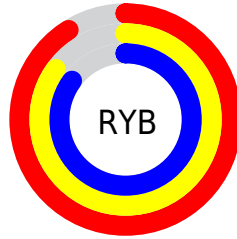
The Yxy color $72.3606, 0.3229, 0.3290$ is a light color, and the websafe version is hex `CCCCCC`. A complement of this color would be $78.4749, 0.3033, 0.3290$, and the grayscale version is $73.2023, 0.3127, 0.3290$.

A 20% lighter version of the original color is $100.0000, 0.3127, 0.3290$, and $38.0688, 0.3251, 0.3290$ is the 20% darker color. If you saturate the color by 10%, you get $60.0308, 0.3431, 0.3290$, and if you desaturate by 10%, it is $86.5511, 0.3068, 0.3290$.

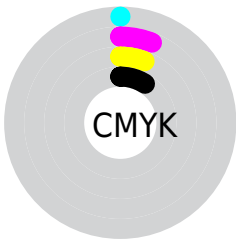
Distribution



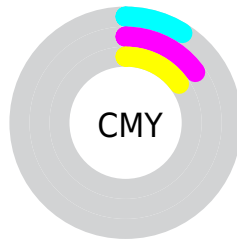
- Red (91%)
- Green (85%)
- Blue (85%)



- Red (91%)
- Yellow (85%)
- Blue (85%)



- Cyan (0%)
- Magenta (6%)
- Yellow (6%)
- Black (9%)




- Cyan (9%)
- Magenta (15%)
- Yellow (15%)

Brightness & Saturation Gradients


These gradients show how the Yxy color 72.3606, 0.3229, 0.3290 changes by changing the brightness by 10 percent. The first figure shows a shift by +10% for each color and the second figure -10%.

Similar to the brightness gradients but the following saturation gradients show a change of the Yxy color 72.3606, 0.3229, 0.3290 by changing the saturation by 10% instead.

 72.3606, 0.3229,
0.3290

 72.3606, 0.3229,
0.3290


468.7957, 0.3182,
0.3290

 53.4533, 0.3240,
0.3290


122.5691, 0.3213,
0.3290

 38.1648, 0.3253,
0.3290


154.6390, 0.3206,
0.3290

 26.1106, 0.3270,
0.3290


191.8653, 0.3201,
0.3290

 16.9064, 0.3293,
0.3289

234.6324, 0.3196,
0.3290

 10.1678, 0.3324,
0.3289

283.3245, 0.3192,
0.3290

 5.5103, 0.3369,
0.3288

338.3262, 0.3188,

 2.5497, 0.3440,

0.3290

400.0218, 0.3185,
0.3290

0.3285

0.9014, 0.3576,
0.3284

0.0000, 0.0000,
0.0000

72.3606, 0.3229,
0.3290

72.3606, 0.3229,
0.3290

60.0308, 0.3431,
0.3290

86.5511, 0.3068,
0.3290

49.4755, 0.3683,
0.3290

95.9049, 0.2988,
0.3290

40.6160, 0.3997,
0.3291

33.3640, 0.4378,
0.3292

■ 27.6230, 0.4822,
0.3293

■ 23.2866, 0.5303,
0.3294

■ 20.2340, 0.5766,
0.3296

■ 18.3247, 0.6135,
0.3297

■ 17.3842, 0.6347,
0.3299

Harmonies

Analogous

The Analogous color harmony consists of three colors that are next to each other on the color wheel.



72.3606, 0.3182, 0.3238



72.3606, 0.3229, 0.3290



72.3606, 0.3249, 0.3343

Triad

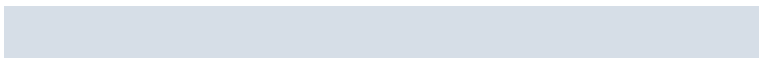
The Triadic color harmony groups three colors that are evenly spaced from another and form a triangle on the color wheel.



72.3606, 0.3229, 0.3290



72.3606, 0.3133, 0.3384



72.3606, 0.3020, 0.3197

Complementary

The Complementary color scheme is a pair of colors which are on the opposite of each other on the color wheel.



72.3606, 0.3229, 0.3290



78.4749, 0.3033, 0.3290

Split Complementary

Split-complementary colors differ from the complementary color scheme. The scheme consists of three colors, the original color and two neighbors of the complement color.



72.3606, 0.3007, 0.3236



72.3606, 0.3229, 0.3290



72.3606, 0.3072, 0.3344

Square

The Square scheme is like the rectangle color scheme, but the four colors are evenly spaced on the color wheel.



72.3606, 0.3229, 0.3290



72.3606, 0.3193, 0.3398



72.3606, 0.3026, 0.3289



72.3606, 0.3061, 0.3184

Rectangle

The Rectangle color scheme consists of four colors that form a rectangle on the color wheel.



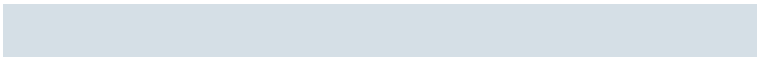
72.3606, 0.3229, 0.3290



72.3606, 0.3243, 0.3372



72.3606, 0.3026, 0.3289



72.3606, 0.3012, 0.3208

Sweetspot

The Sweet Spot groups the original color and five complimentary colors.



72.3638, 0.3229, 0.3290



96.4655, 0.3159, 0.3290



73.0912, 0.3132, 0.3142



20.6846, 0.3158, 0.3290



0.0000, 0.0000, 0.0000



21.4041, 0.3127, 0.3290

Same Dimension

The Same Dimension uses a secret algorithm to generate beautiful new colors.



72.3638, 0.3229, 0.3290



88.0404, 0.3247, 0.3290



75.9611, 0.3223, 0.3362



15.5914, 0.3257, 0.3290



9.8305, 0.6399, 0.3299



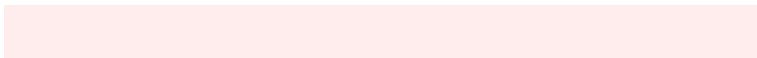
0.7721, 0.6393, 0.3296

Inverse Universe

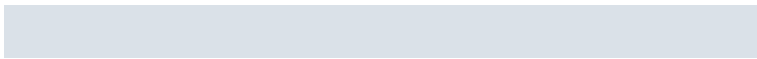
The Inverse Universe completely reimagines the original color for something new.



72.3638, 0.3229, 0.3290



88.0404, 0.3247, 0.3290



74.7212, 0.3034, 0.3217



15.5914, 0.3257, 0.3290



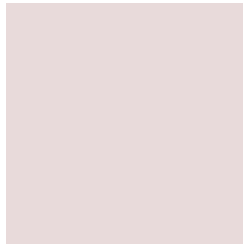
9.8305, 0.6399, 0.3299



0.7721, 0.6393, 0.3296

Previews

White Background



This preview shows how the Yxy color 72.3606, 0.3229, 0.3290 looks on a white background.

Color Contrast Check

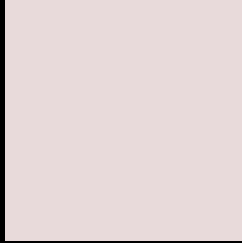
Large Text (above 18pt) WCAG AA × Fail

Any Text WCAG AA × Fail

Large Text (above 18pt) WCAG AAA × Fail

Any Text WCAG AAA × Fail

Black Background



This preview shows how the Yxy color 72.3606, 0.3229, 0.3290 looks on a black background.

Color Contrast Check

Large Text (above 18pt) WCAG AA ✓ Pass

Any Text WCAG AA ✓ Pass

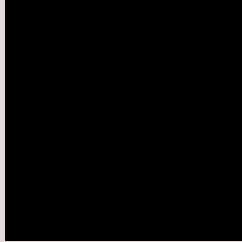
Large Text (above 18pt) WCAG AAA ✓ Pass

Any Text WCAG AAA ✓ Pass

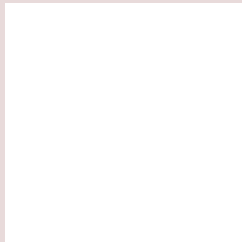
If you want to check with other color combinations, try the [Color Contrast Checker](#).

Yxy 72.3606, 0.3229, 0.3290

Background



This preview shows how black text looks on a background with the Yxy color 72.3606, 0.3229, 0.3290.

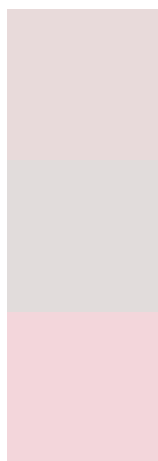


This preview shows how white text looks on a background with the Yxy color 72.3606, 0.3229, 0.3290.

Color Blindness Simulation

Color vision deficiency is a very complex topic, and I could not describe the different causes any better than Wikipedia does, so if you want to learn more, you should check out their [article about color blindness](#).

Dichromacy



Original Color

72.3606, 0.3229, 0.3290

Protanopia

72.3084, 0.3170, 0.3301

Deuteranopia

72.2623, 0.3307, 0.3239



Tritanopia

72.4874, 0.3143, 0.3112

Trichromacy



Original Color

72.3606, 0.3229, 0.3290

Protanomaly

72.2715, 0.3192, 0.3290

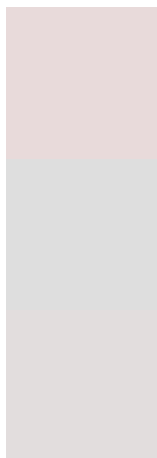
Deuteranomaly

72.0661, 0.3276, 0.3248

Tritanomaly

72.5508, 0.3169, 0.3174

Monochromacy



Original Color

72.3606, 0.3229, 0.3290

Achromatopsia

73.0461, 0.3127, 0.3290

Achromatomaly

73.1021, 0.3163, 0.3290

CSS Examples

Text

The CSS property to change the color of the text to Yxy 72.3606, 0.3229, 0.3290 is called "color". The color property can be set on classes, ids or directly on the HTML element.

This example shows how text in the color `rgb(232, 218, 218)` looks like.

```
.text, #text, p{  
    color:rgb(232, 218, 218)  
}
```

If you want to add a text shadow in that color use the text-shadow property, you can generate a text shadow directly with our [CSS Text Shadow Generator](#).

Here you see how black text with a 4 pixel rgb(232, 218, 218) colored shadow looks like.

```
.shadow{ text-shadow: 4px 4px 2px rgb(232, 218, 218) }
```

Border

The CSS property to change the border of an element to Yxy 72.3606, 0.3229, 0.3290 is called "border". The border property can be set on classes, ids or directly on the HTML element.

This example shows the color as border, it can be applied via the CSS property "border" or "border-color".

```
.border, #border, table{ border:4px solid rgb(232, 218, 218) }
```

If only the border color should be changed use the property `border-color`.

```
.border{ border-color:rgb(232, 218, 218) }
```

If you want to add a box shadow in that color use:

Here you see how a box with a 4 pixel `rgb(232, 218, 218)` colored shadow looks like.

```
.boxshadow{ -moz-box-shadow:4px 4px 4px  
4px rgb(232, 218, 218); -webkit-box-  
shadow:4px 4px 4px 4px rgb(232, 218, 218);  
box-shadow:4px 4px 4px 4px rgb(232, 218,  
218) }
```


Background

The CSS property to change the background color of an element to Yxy 72.3606, 0.3229, 0.3290 is called "background". The background property can be set on classes, ids or directly on the HTML element.

```
.background, #background, body{  
background: rgb(232, 218, 218) }
```

If only the background color should be changed can be used:

```
.background{ background-color: rgb(232,  
218, 218) }
```

This example shows the color as background, it is applied via the CSS property "background".

To optimize and compress your CSS code, you can use our [online CSS compressor and optimizer](#) based on csstidy. If you want to create a linear or radial gradient as background or border, check our [CSS Gradient Generator](#).

Hey! You found this booklet interesting? Support Converting Colors with the new Membership Option!

The pro membership hides all ads, plus gives you double the colors in the color bucket, and more awesome pro features!

[Learn more, Memberships starting at \\$2.50/m!](#)

**Follow me
on Twitter!**

@ConvertingColor