

# Converting Colors

$Yxy(72.6072, 0.3373, 0.3407)$

Have a look what the booklet for  
Yxy(72.6072, 0.3373, 0.3407)  
contains.

<b>Yxy(72.6072, 0.3373, 0.3407)</b> .....	3
<b>Conversions</b> .....	4
<b>Details</b> .....	6
<b>Harmonies</b> .....	12
<b>Previews</b> .....	24
<b>Color Blindness Simulation</b> .....	27
<b>CSS Examples</b> .....	30

# Color

**Yxy(72.6072, 0.3373, 0.3407)**

# Conversions

## Conversions Part 1

Format	Color
Hex	F0D9CE
RGB	240, 217, 206
RGB Percent	94%, 85%, 81%
CMY	0.0589, 0.1490, 0.1921
CMYK	0.00, 0.10, 0.14, 0.06
HSL	19°, 53%, 87%
HSV	19°, 14%, 94%
XYZ	71.8826, 72.6072, 68.6220
YIQ	222.6230, 17.2390, 1.4550

# Conversions

## Conversions Part 2

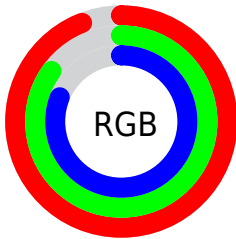
<b>Format</b>	<b>Color</b>
<b>R<sub>YB</sub></b>	240, 222, 206
Decimal	15784398
CIE Lab	88.26, 6.15, 8.28
CIE LCh	88, 10.317, 53.418
Yxy	72.6072, 0.3373, 0.3407
Android (android.graphics.Color)	4293974478 (0xFFFF0D9CE)
YUV	222.6230, -8.1951, 15.2396
Hunter-Lab	85.2099, 1.4645, 11.8989

# Details

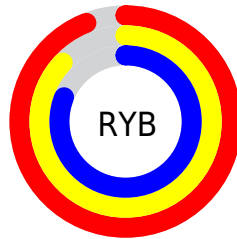
The Yxy color **72.6072, 0.3373, 0.3407** is a light color, and the websafe version is hex **CCCCCC**. A complement of this color would be **75.4335, 0.2908, 0.3170**, and the grayscale version is **73.5608, 0.3127, 0.3290**.

A 20% lighter version of the original color is **100.0000, 0.3127, 0.3290**, and **38.2980, 0.3433, 0.3428** is the 20% darker color. If you saturate the color by 10%, you get **63.5754, 0.3585, 0.3495**, and if you desaturate by 10%, it is **82.6455, 0.3193, 0.3323**.

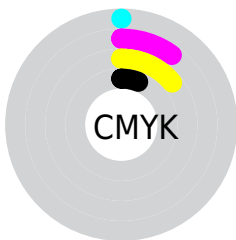
# Distribution



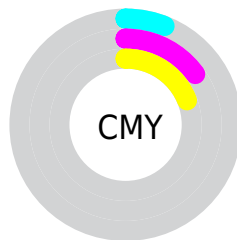
- Red (94%)
- Green (85%)
- Blue (81%)



- Red (94%)
- Yellow (87%)
- Blue (81%)



- Cyan (0%)
- Magenta (10%)
- Yellow (14%)
- Black (6%)




- Cyan (6%)
- Magenta (15%)
- Yellow (19%)

# Brightness & Saturation Gradients

These gradients show how the Yxy color 72.6072, 0.3373, 0.3407 changes by changing the brightness by 10 percent. The first figure shows a shift by +10% for each color and the second figure -10%.


Similar to the brightness gradients but the following saturation gradients show a change of the Yxy color 72.6072, 0.3373, 0.3407 by changing the saturation by 10% instead.




 72.6072, 0.3373,  
0.3407

 72.6072, 0.3373,  
0.3407


469.6523, 0.3259,  
0.3354

 53.6548, 0.3399,  
0.3419

122.9194, 0.3333,  
0.3389

 38.3258, 0.3432,  
0.3433


155.0481, 0.3318,  
0.3382

 26.2356, 0.3473,  
0.3452

192.3376, 0.3304,  
0.3375

 17.0000, 0.3528,  
0.3475

235.1724, 0.3293,  
0.3370

 10.2345, 0.3603,  
0.3507

283.9369, 0.3283,  
0.3365

 5.5547, 0.3711,  
0.3550

339.0154, 0.3274,

 2.5763, 0.3883,

0.3361

400.7924, 0.3266,  
0.3357

0.3615

0.9147, 0.4367,  
0.3871

0.0000, 0.0000,  
0.0000

72.6072, 0.3373,  
0.3407

72.6072, 0.3373,  
0.3407

63.5754, 0.3585,  
0.3495

82.6455, 0.3193,  
0.3323

55.5088, 0.3834,  
0.3586

93.7108, 0.3042,  
0.3245

48.3772, 0.4123,  
0.3673

97.2609, 0.3035,  
0.3290

42.1453, 0.4448,  
0.3750

■ 36.7753, 0.4801,  
0.3806

■ 32.2265, 0.5164,  
0.3828

■ 28.4542, 0.5506,  
0.3805

■ 25.4085, 0.5792,  
0.3732

■ 23.9358, 0.5930,  
0.3674

# Harmonies

## Analogous

The Analogous color harmony consists of three colors that are next to each other on the color wheel.



72.6072, 0.3342, 0.3303



72.6072, 0.3373, 0.3407



72.6072, 0.3337, 0.3483

# Triad

The Triadic color harmony groups three colors that are evenly spaced from another and form a triangle on the color wheel.



72.6072, 0.3373, 0.3407



72.6072, 0.3002, 0.3385



72.6072, 0.3008, 0.3080

# Complementary

The Complementary color scheme is a pair of colors which are on the opposite of each other on the color wheel.



72.6072, 0.3373, 0.3407



75.4335, 0.2908, 0.3170

# Split Complementary

Split-complementary colors differ from the complementary color scheme. The scheme consists of three colors, the original color and two neighbors of the complement color.



72.6072, 0.2920, 0.3097



72.6072, 0.3373, 0.3407



72.6072, 0.2917, 0.3271

# Square

The Square scheme is like the rectangle color scheme, but the four colors are evenly spaced on the color wheel.



72.6072, 0.3373, 0.3407



72.6072, 0.3121, 0.3473



72.6072, 0.2887, 0.3166



72.6072, 0.3129, 0.3117



# Rectangle

The Rectangle color scheme consists of four colors that form a rectangle on the color wheel.



72.6072, 0.3373, 0.3407



72.6072, 0.3280, 0.3507



72.6072, 0.2887, 0.3166



72.6072, 0.2974, 0.3079

# Sweetspot

The Sweet Spot groups the original color and five complimentary colors.



72.6104, 0.3373, 0.3407



95.0399, 0.3191, 0.3322



68.3363, 0.3219, 0.3048



20.1474, 0.3203, 0.3328



0.0000, 0.0000, 0.0000



21.4041, 0.3127, 0.3290

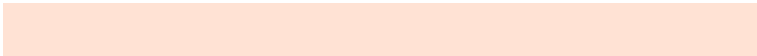


# Same Dimension

The Same Dimension uses a secret algorithm to generate beautiful new colors.



72.6104, 0.3373, 0.3407



80.2240, 0.3431, 0.3432



81.6794, 0.3348, 0.3579



16.5951, 0.3285, 0.3367



13.3200, 0.5901, 0.3697



1.2821, 0.5645, 0.3900

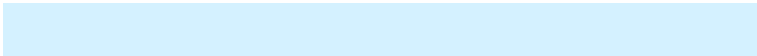


# Inverse Universe

The Inverse Universe completely reimagines the original color for something new.



75.4335, 0.2908, 0.3170



84.0478, 0.2863, 0.3143



66.6169, 0.2902, 0.2984



17.0151, 0.2981, 0.3212



17.8859, 0.1943, 0.2196

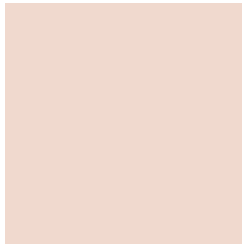


1.6677, 0.1988, 0.2357



# Previews

## White Background



This preview shows how the Yxy color 72.6072, 0.3373, 0.3407 looks on a white background.

## Color Contrast Check

Large Text (above 18pt) WCAG AA × Fail

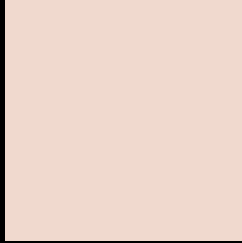
Any Text WCAG AA × Fail

Large Text (above 18pt) WCAG AAA × Fail

Any Text WCAG AAA × Fail



# Black Background



This preview shows how the Yxy color 72.6072, 0.3373, 0.3407 looks on a black background.

## Color Contrast Check

Large Text (above 18pt) WCAG AA ✓ Pass

Any Text WCAG AA ✓ Pass

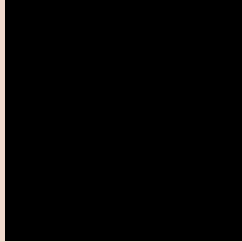
Large Text (above 18pt) WCAG AAA ✓ Pass

Any Text WCAG AAA ✓ Pass

If you want to check with other color combinations, try the [Color Contrast Checker](#).

**Yxy 72.6072, 0.3373, 0.3407**

## **Background**



This preview shows how black text looks on a background with the Yxy color 72.6072, 0.3373, 0.3407.

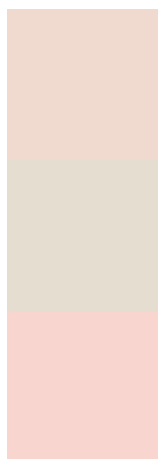


This preview shows how white text looks on a background with the Yxy color 72.6072, 0.3373, 0.3407.

# Color Blindness Simulation

Color vision deficiency is a very complex topic, and I could not describe the different causes any better than Wikipedia does, so if you want to learn more, you should check out their [article about color blindness](#).

## Dichromacy



### Original Color

72.6072, 0.3373, 0.3407

### Protanopia

72.9250, 0.3272, 0.3431

### Deuteranopia

72.5546, 0.3431, 0.3364



## Tritanopia

72.3564, 0.3231, 0.3115

# Trichromacy



**Original Color**

72.6072, 0.3373, 0.3407

**Protanomaly**

73.0150, 0.3310, 0.3430

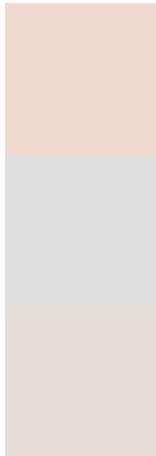
**Deuteranomaly**

72.5183, 0.3407, 0.3374

**Tritanomaly**

72.1908, 0.3286, 0.3218

# Monochromacy



**Original Color**

72.6072, 0.3373, 0.3407

**Achromatopsia**

73.7910, 0.3127, 0.3290

**Achromatomaly**

73.3807, 0.3211, 0.3333

# CSS Examples

## Text

The CSS property to change the color of the text to Yxy 72.6072, 0.3373, 0.3407 is called "color". The color property can be set on classes, ids or directly on the HTML element.

This example shows how text in the color `rgb(240, 217, 206)` looks like.

```
.text, #text, p{  
    color:rgb(240, 217, 206)  
}
```

If you want to add a text shadow in that color use the text-shadow property, you can generate a text shadow directly with our [CSS Text Shadow Generator](#).

Here you see how black text with a 4 pixel rgb(240, 217, 206) colored shadow looks like.

```
.shadow{ text-shadow: 4px 4px 2px rgb(240, 217, 206) }
```

## Border

The CSS property to change the border of an element to Yxy 72.6072, 0.3373, 0.3407 is called "border". The border property can be set on classes, ids or directly on the HTML element.

This example shows the color as border, it can be applied via the CSS property "border" or "border-color".

```
.border, #border, table{ border:4px solid rgb(240, 217, 206) }
```

If only the border color should be changed use the property `border-color`.

```
.border{ border-color:rgb(240, 217, 206) }
```

If you want to add a box shadow in that color use:

Here you see how a box with a 4 pixel `rgb(240, 217, 206)` colored shadow looks like.

```
.boxshadow{ -moz-box-shadow:4px 4px 4px  
4px rgb(240, 217, 206); -webkit-box-  
shadow:4px 4px 4px 4px rgb(240, 217, 206);  
box-shadow:4px 4px 4px 4px rgb(240, 217,  
206) }
```



# Background

The CSS property to change the background color of an element to Yxy 72.6072, 0.3373, 0.3407 is called "background". The background property can be set on classes, ids or directly on the HTML element.

```
.background, #background, body{  
background: rgb(240, 217, 206) }
```

If only the background color should be changed can be used:

```
.background{ background-color: rgb(240,  
217, 206) }
```

This example shows the color as background, it is applied via the CSS property "background".

To optimize and compress your CSS code, you can use our [online CSS compressor and optimizer](#) based on csstidy. If you want to create a linear or radial gradient as background or border, check our [CSS Gradient Generator](#).

Hey! You found this booklet interesting? Support Converting Colors with the new Membership Option!

The pro membership hides all ads, plus gives you double the colors in the color bucket, and more awesome pro features!

**[Learn more, Memberships starting at \\$2.50/m!](#)**

**Follow me  
on Twitter!**

@ConvertingColor