

Converting Colors

$Y_{xy}(72.7028, 0.3252, 0.3255)$

Have a look what the booklet for
Yxy(72.7028, 0.3252, 0.3255)
contains.

Yxy(72.7975, 0.3252, 0.3259)	3
Conversions	4
Details	6
Harmonies	12
Previews	24
Color Blindness Simulation	27
CSS Examples	30

Color

Yxy(72.7975, 0.3252, 0.3259)

Conversions

Conversions Part 1

Format	Color
Hex	EDD9DC
RGB	237, 217, 220
RGB Percent	93%, 85%, 86%
CMY	0.0708, 0.1489, 0.1372
CMYK	0.00, 0.08, 0.07, 0.07
HSL	351°, 36%, 89%
HSV	351°, 8%, 93%
XYZ	72.6411, 72.7975, 77.9351
YIQ	223.3220, 10.9570, 5.1730

Conversions

Conversions Part 2

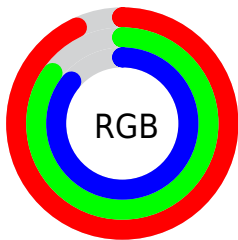
Format	Color
R _Y B	237, 217, 220
Decimal	15587804
CIE Lab	88.35, 7.35, 1.01
CIE LCh	88, 7.423, 7.830
Yxy	72.7975, 0.3252, 0.3259
Android (android.graphics.Color)	4293777884 (0xFFEDD9DC)
YUV	223.3220, -1.6377, 11.9956
Hunter-Lab	85.3215, 2.6591, 5.5678

Details

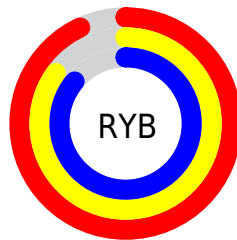
The Yxy color **72.7975, 0.3252, 0.3259** is a light color, and the websafe version is hex **CCCCCC**. A complement of this color would be **81.2271, 0.3015, 0.3321**, and the grayscale version is **74.0360, 0.3127, 0.3290**.

A 20% lighter version of the original color is **100.0000, 0.3127, 0.3290**, and **38.3810, 0.3282, 0.3250** is the 20% darker color. If you saturate the color by 10%, you get **60.4443, 0.3434, 0.3220**, and if you desaturate by 10%, it is **87.0394, 0.3106, 0.3296**.

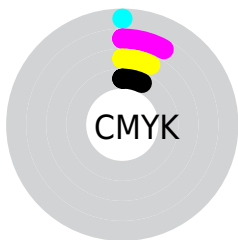
Distribution



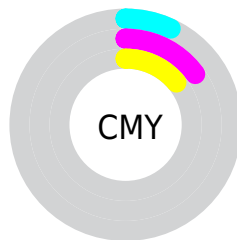
- Red (93%)
- Green (85%)
- Blue (86%)



- Red (93%)
- Yellow (85%)
- Blue (86%)



- Cyan (0%)
- Magenta (8%)
- Yellow (7%)
- Black (7%)




- Cyan (7%)
- Magenta (15%)
- Yellow (14%)

Brightness & Saturation Gradients


These gradients show how the Yxy color 72.7975, 0.3252, 0.3259 changes by changing the brightness by 10 percent. The first figure shows a shift by +10% for each color and the second figure -10%.

Similar to the brightness gradients but the following saturation gradients show a change of the Yxy color 72.7975, 0.3252, 0.3259 by changing the saturation by 10% instead.


 72.7975, 0.3252,
0.3259

 72.7975, 0.3252,
0.3259


470.3127, 0.3194,
0.3274

 53.8104, 0.3265,
0.3256

123.1897, 0.3232,
0.3264

 38.4501, 0.3282,
0.3251


155.3636, 0.3224,
0.3266

 26.3322, 0.3303,
0.3246


192.7018, 0.3217,
0.3268

 17.0723, 0.3330,
0.3239

235.5889, 0.3212,
0.3269

 10.2861, 0.3367,
0.3229

284.4091, 0.3206,
0.3271

 5.5890, 0.3422,
0.3215

339.5469, 0.3202,

 2.5968, 0.3508,

0.3272

0.3192

401.3866, 0.3198,
0.3273

■ 0.9251, 0.3666,
0.3148

■ 0.0000, 1.0000,
0.0000

■ 72.7975, 0.3252,
0.3259

■ 72.7975, 0.3252,
0.3259

■ 60.4443, 0.3434,
0.3220

■ 87.0394, 0.3106,
0.3296

■ 49.8913, 0.3659,
0.3179

■ 96.7341, 0.3017,
0.3290

■ 41.0572, 0.3936,
0.3139

■ 33.8506, 0.4270,
0.3103

■ 28.1720, 0.4660,
0.3077

■ 23.9105, 0.5090,
0.3068

■ 20.9404, 0.5524,
0.3084

■ 19.1136, 0.5907,
0.3128

■ 18.2204, 0.6186,
0.3192

Harmonies

Analogous

The Analogous color harmony consists of three colors that are next to each other on the color wheel.



72.7975, 0.3173, 0.3190



72.7975, 0.3252, 0.3259



72.7975, 0.3298, 0.3337

Triad

The Triadic color harmony groups three colors that are evenly spaced from another and form a triangle on the color wheel.



72.7975, 0.3252, 0.3259



72.7975, 0.3171, 0.3439



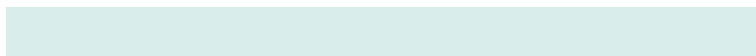
72.7975, 0.2960, 0.3173

Complementary

The Complementary color scheme is a pair of colors which are on the opposite of each other on the color wheel.



72.7975, 0.3252, 0.3259



81.2271, 0.3015, 0.3321

Split Complementary

Split-complementary colors differ from the complementary color scheme. The scheme consists of three colors, the original color and two neighbors of the complement color.



72.7975, 0.2960, 0.3239



72.7975, 0.3252, 0.3259



72.7975, 0.3080, 0.3394

Square

The Square scheme is like the rectangle color scheme, but the four colors are evenly spaced on the color wheel.



72.7975, 0.3252, 0.3259



72.7975, 0.3250, 0.3443



72.7975, 0.3003, 0.3320



72.7975, 0.3005, 0.3140

Rectangle

The Rectangle color scheme consists of four colors that form a rectangle on the color wheel.



72.7975, 0.3252, 0.3259



72.7975, 0.3303, 0.3385



72.7975, 0.3003, 0.3320



72.7975, 0.2955, 0.3192

Sweetspot

The Sweet Spot groups the original color and five complimentary colors.



72.8007, 0.3252, 0.3259



94.8038, 0.3169, 0.3279



73.2343, 0.3116, 0.3083



20.0022, 0.3181, 0.3276



0.0000, 0.0000, 0.0000



21.4041, 0.3127, 0.3290

Same Dimension

The Same Dimension uses a secret algorithm to generate beautiful new colors.



72.8007, 0.3252, 0.3259



83.4769, 0.3279, 0.3253



76.3141, 0.3265, 0.3363



15.0908, 0.3269, 0.3255



9.9093, 0.6192, 0.3185



0.7894, 0.5856, 0.3000

Inverse Universe

The Inverse Universe completely reimagines the original color for something new.



72.8007, 0.3252, 0.3259



83.4769, 0.3279, 0.3253



77.4432, 0.2997, 0.3215



15.0908, 0.3269, 0.3255



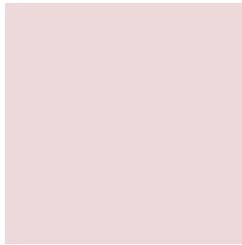
9.9093, 0.6192, 0.3185



0.7894, 0.5856, 0.3000

Previews

White Background



This preview shows how the Yxy color 72.7975, 0.3252, 0.3259 looks on a white background.

Color Contrast Check

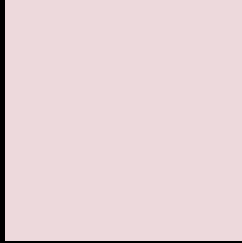
Large Text (above 18pt) WCAG AA × Fail

Any Text WCAG AA × Fail

Large Text (above 18pt) WCAG AAA × Fail

Any Text WCAG AAA × Fail

Black Background



This preview shows how the Yxy color 72.7975, 0.3252, 0.3259 looks on a black background.

Color Contrast Check

Large Text (above 18pt) WCAG AA ✓ Pass

Any Text WCAG AA ✓ Pass

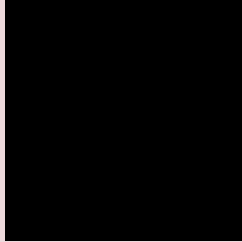
Large Text (above 18pt) WCAG AAA ✓ Pass

Any Text WCAG AAA ✓ Pass

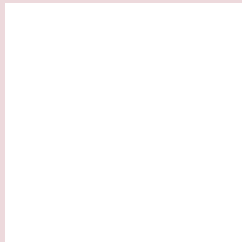
If you want to check with other color combinations, try the [Color Contrast Checker](#).

Yxy 72.7975, 0.3252, 0.3259

Background



This preview shows how black text looks on a background with the Yxy color 72.7975, 0.3252, 0.3259.

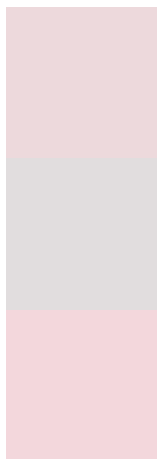


This preview shows how white text looks on a background with the Yxy color 72.7975, 0.3252, 0.3259.

Color Blindness Simulation

Color vision deficiency is a very complex topic, and I could not describe the different causes any better than Wikipedia does, so if you want to learn more, you should check out their [article about color blindness](#).

Dichromacy



Original Color

72.7975, 0.3252, 0.3259

Protanopia

72.9944, 0.3149, 0.3279

Deuteranopia

72.8229, 0.3299, 0.3239



Tritanopia

72.7778, 0.3186, 0.3114

Trichromacy



Original Color

72.7975, 0.3252, 0.3259

Protanomaly

73.0649, 0.3185, 0.3280

Deuteranomaly

72.9798, 0.3283, 0.3249

Tritanomaly

72.8903, 0.3206, 0.3165

Monochromacy



Original Color

72.7975, 0.3252, 0.3259

Achromatopsia

73.7910, 0.3127, 0.3290

Achromatomaly

73.4808, 0.3170, 0.3279

CSS Examples

Text

The CSS property to change the color of the text to Yxy 72.7975, 0.3252, 0.3259 is called "color". The color property can be set on classes, ids or directly on the HTML element.

This example shows how text in the color `rgb(237, 217, 220)` looks like.

```
.text, #text, p{  
    color:rgb(237, 217, 220)  
}
```

If you want to add a text shadow in that color use the text-shadow property, you can generate a text shadow directly with our [CSS Text Shadow Generator](#).

Here you see how black text with a 4 pixel rgb(237, 217, 220) colored shadow looks like.

```
.shadow{ text-shadow: 4px 4px 2px rgb(237, 217, 220) }
```

Border

The CSS property to change the border of an element to Yxy 72.7975, 0.3252, 0.3259 is called "border". The border property can be set on classes, ids or directly on the HTML element.

This example shows the color as border, it can be applied via the CSS property "border" or "border-color".

```
.border, #border, table{ border:4px solid rgb(237, 217, 220) }
```

If only the border color should be changed use the property `border-color`.

```
.border{ border-color:rgb(237, 217, 220) }
```

If you want to add a box shadow in that color use:

Here you see how a box with a 4 pixel `rgb(237, 217, 220)` colored shadow looks like.

```
.boxshadow{ -moz-box-shadow:4px 4px 4px  
4px rgb(237, 217, 220); -webkit-box-  
shadow:4px 4px 4px 4px rgb(237, 217, 220);  
box-shadow:4px 4px 4px 4px rgb(237, 217,  
220) }
```


Background

The CSS property to change the background color of an element to Yxy 72.7975, 0.3252, 0.3259 is called "background". The background property can be set on classes, ids or directly on the HTML element.

```
.background, #background, body{  
background: rgb(237, 217, 220) }
```

If only the background color should be changed can be used:

```
.background{ background-color: rgb(237,  
217, 220) }
```

This example shows the color as background, it is applied via the CSS property "background".

To optimize and compress your CSS code, you can use our [online CSS compressor and optimizer](#) based on csstidy. If you want to create a linear or radial gradient as background or border, check our [CSS Gradient Generator](#).

Hey! You found this booklet interesting? Support Converting Colors with the new Membership Option!

The pro membership hides all ads, plus gives you double the colors in the color bucket, and more awesome pro features!

[Learn more, Memberships starting at \\$2.50/m!](#)

**Follow me
on Twitter!**

@ConvertingColor