

# Converting Colors

$Yxy(72.7749, 0.3246, 0.3290)$

Have a look what the booklet for  
Yxy(72.7749, 0.3246, 0.3290)  
contains.

<b>Yxy(72.6972, 0.3243, 0.3290)</b> .....	3
<b>Conversions</b> .....	4
<b>Details</b> .....	6
<b>Harmonies</b> .....	12
<b>Previews</b> .....	24
<b>Color Blindness Simulation</b> .....	27
<b>CSS Examples</b> .....	30

# Color

**Yxy(72.6972, 0.3243, 0.3290)**

# Conversions

## Conversions Part 1

<b>Format</b>	<b>Color</b>
Hex	EADADA
RGB	234, 218, 218
RGB Percent	92%, 85%, 85%
CMY	0.0824, 0.1451, 0.1450
CMYK	0.00, 0.07, 0.07, 0.08
HSL	360°, 28%, 89%
HSV	360°, 7%, 92%
XYZ	71.6587, 72.6972, 76.6083
YIQ	222.7840, 9.5360, 3.3920

# Conversions

## Conversions Part 2

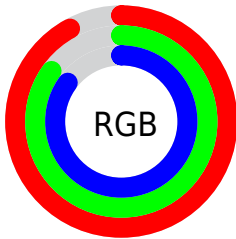
<b>Format</b>	<b>Color</b>
<a href="#">RYB</a>	<a href="#">234, 218, 218</a>
Decimal	<a href="#">15391450</a>
CIELab	<a href="#">88.30, 5.49, 1.95</a>
CIElCh	<a href="#">88, 5.826, 19.552</a>
Yxy	<a href="#">72.6972, 0.3243, 0.3290</a>
Android (android.graphics.Color)	<a href="#">4293581530 (0xFFEADADA)</a>
YUV	<a href="#">222.7840, -2.3585, 9.8364</a>
Hunter-Lab	<a href="#">85.2627, 0.8100, 6.4120</a>

# Details

The Yxy color  $72.6972, 0.3243, 0.3290$  is a light color, and the websafe version is hex `CCCCCC`. A complement of this color would be  $79.6841, 0.3021, 0.3290$ , and the grayscale version is  $73.6449, 0.3127, 0.3290$ .

A 20% lighter version of the original color is  $100.0000, 0.3127, 0.3290$ , and  $38.3037, 0.3270, 0.3290$  is the 20% darker color. If you saturate the color by 10%, you get  $60.2707, 0.3448, 0.3290$ , and if you desaturate by 10%, it is  $87.0155, 0.3079, 0.3290$ .

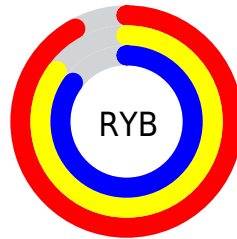
# Distribution



Red (92%)

Green (85%)

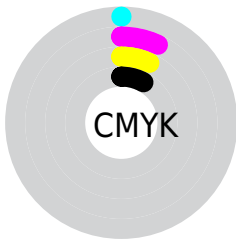
Blue (85%)



Red (92%)

Yellow (85%)

Blue (85%)

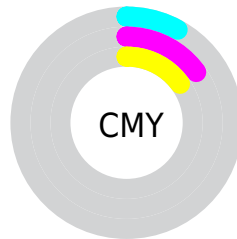


Cyan (0%)

Magenta (7%)

Yellow (7%)

Black (8%)



Cyan (8%)

Magenta (15%)


Yellow (15%)

# Brightness & Saturation Gradients

These gradients show how the Yxy color 72.6972, 0.3243, 0.3290 changes by changing the brightness by 10 percent. The first figure shows a shift by +10% for each color and the second figure -10%.

Similar to the brightness gradients but the following saturation gradients show a change of the Yxy color 72.6972, 0.3243, 0.3290 by changing the saturation by 10% instead.



 72.6972, 0.3243,  
0.3290

 72.6972, 0.3243,  
0.3290


469.9647, 0.3189,  
0.3290

 53.7284, 0.3255,  
0.3290


123.0473, 0.3224,  
0.3290

 38.3846, 0.3271,  
0.3290


155.1973, 0.3217,  
0.3290

 26.2813, 0.3290,  
0.3289


192.5099, 0.3211,  
0.3290

 17.0342, 0.3316,  
0.3289

235.3694, 0.3205,  
0.3290

 10.2589, 0.3350,  
0.3288

284.1602, 0.3201,  
0.3290

 5.5709, 0.3401,  
0.3287

339.2668, 0.3196,

 2.5860, 0.3482,

0.3290

0.3284

401.0735, 0.3193,  
0.3290

0.9196, 0.3635,  
0.3281

0.0000, 0.0000,  
0.0000

72.6972, 0.3243,  
0.3290

72.6972, 0.3243,  
0.3290

60.2707, 0.3448,  
0.3290

87.0155, 0.3079,  
0.3290

49.6478, 0.3706,  
0.3290

96.2306, 0.2999,  
0.3290

40.7478, 0.4024,  
0.3291

33.4798, 0.4411,  
0.3292

■ 27.7448, 0.4859,  
0.3293

■ 23.4332, 0.5341,  
0.3294

■ 20.4204, 0.5800,  
0.3296

■ 18.5609, 0.6158,  
0.3297

■ 17.6688, 0.6358,  
0.3299

# Harmonies

## Analogous

The Analogous color harmony consists of three colors that are next to each other on the color wheel.



72.6972, 0.3189, 0.3231



72.6972, 0.3243, 0.3290



72.6972, 0.3265, 0.3350

# Triad

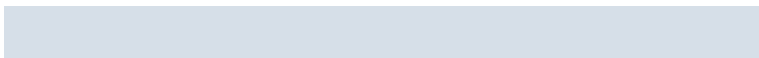
The Triadic color harmony groups three colors that are evenly spaced from another and form a triangle on the color wheel.



72.6972, 0.3243, 0.3290



72.6972, 0.3134, 0.3396



72.6972, 0.3006, 0.3185

# Complementary

The Complementary color scheme is a pair of colors which are on the opposite of each other on the color wheel.



72.6972, 0.3243, 0.3290



79.6841, 0.3021, 0.3290

# Split Complementary

Split-complementary colors differ from the complementary color scheme. The scheme consists of three colors, the original color and two neighbors of the complement color.



72.6972, 0.2991, 0.3228



72.6972, 0.3243, 0.3290



72.6972, 0.3065, 0.3351

# Square

The Square scheme is like the rectangle color scheme, but the four colors are evenly spaced on the color wheel.



72.6972, 0.3243, 0.3290



72.6972, 0.3202, 0.3413



72.6972, 0.3013, 0.3289



72.6972, 0.3052, 0.3170



# Rectangle

The Rectangle color scheme consists of four colors that form a rectangle on the color wheel.



72.6972, 0.3243, 0.3290



72.6972, 0.3259, 0.3383



72.6972, 0.3013, 0.3289



72.6972, 0.2997, 0.3196

# Sweetspot

The Sweet Spot groups the original color and five complimentary colors.



72.7004, 0.3243, 0.3290



96.4655, 0.3159, 0.3290



73.5314, 0.3133, 0.3123



20.6846, 0.3158, 0.3290



0.0000, 0.0000, 0.0000



21.4041, 0.3127, 0.3290

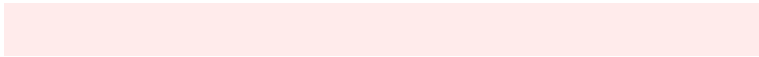


# Same Dimension

The Same Dimension uses a secret algorithm to generate beautiful new colors.



72.7004, 0.3243, 0.3290



86.4251, 0.3265, 0.3290



76.7996, 0.3236, 0.3372



15.0545, 0.3293, 0.3290



9.8305, 0.6399, 0.3299



0.7721, 0.6393, 0.3296

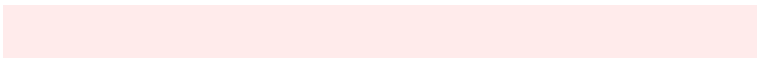


# Inverse Universe

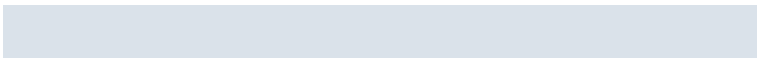
The Inverse Universe completely reimagines the original color for something new.



72.7004, 0.3243, 0.3290



86.4251, 0.3265, 0.3290



75.3827, 0.3022, 0.3207



15.0545, 0.3293, 0.3290



9.8305, 0.6399, 0.3299

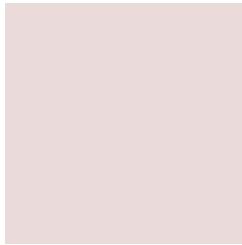


0.7721, 0.6393, 0.3296



# Previews

## White Background



This preview shows how the Yxy color 72.6972, 0.3243, 0.3290 looks on a white background.

## Color Contrast Check

Large Text (above 18pt) WCAG AA × Fail

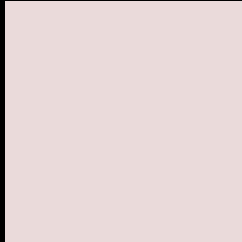
Any Text WCAG AA × Fail

Large Text (above 18pt) WCAG AAA × Fail

Any Text WCAG AAA × Fail



# Black Background



This preview shows how the Yxy color 72.6972, 0.3243, 0.3290 looks on a black background.

## Color Contrast Check

Large Text (above 18pt) WCAG AA ✓ Pass

Any Text WCAG AA ✓ Pass

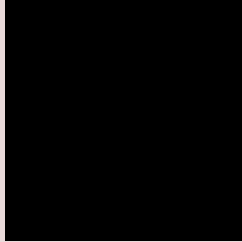
Large Text (above 18pt) WCAG AAA ✓ Pass

Any Text WCAG AAA ✓ Pass

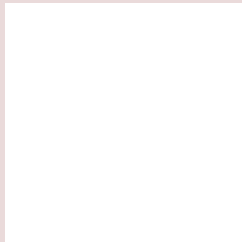
If you want to check with other color combinations, try the [Color Contrast Checker](#).

**Yxy 72.6972, 0.3243, 0.3290**

## **Background**



This preview shows how black text looks on a background with the Yxy color 72.6972, 0.3243, 0.3290.

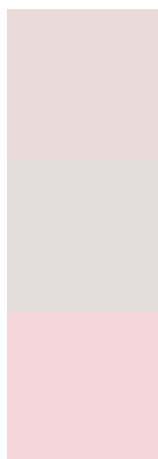


This preview shows how white text looks on a background with the Yxy color 72.6972, 0.3243, 0.3290.

# Color Blindness Simulation

Color vision deficiency is a very complex topic, and I could not describe the different causes any better than Wikipedia does, so if you want to learn more, you should check out their [article about color blindness](#).

## Dichromacy



### Original Color

72.6972, 0.3243, 0.3290

### Protanopia

72.9961, 0.3176, 0.3312

### Deuteranopia

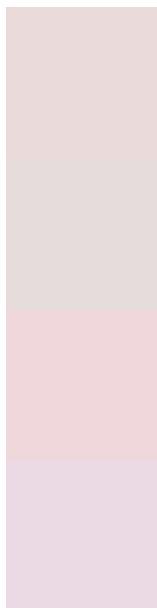
72.4407, 0.3315, 0.3239



## Tritanopia

72.8278, 0.3157, 0.3113

# Trichromacy



## Original Color

72.6972, 0.3243, 0.3290

## Protanomaly

72.9589, 0.3198, 0.3301

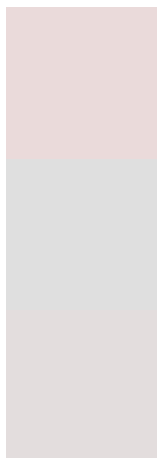
## Deuteranomaly

72.2406, 0.3284, 0.3249

## Tritanomaly

72.8893, 0.3183, 0.3175

# Monochromacy



## Original Color

72.6972, 0.3243, 0.3290

## Achromatopsia

73.7910, 0.3127, 0.3290

## Achromatomaly

73.2643, 0.3170, 0.3290

# CSS Examples

## Text

The CSS property to change the color of the text to Yxy 72.6972, 0.3243, 0.3290 is called "color". The color property can be set on classes, ids or directly on the HTML element.

This example shows how text in the color `rgb(234, 218, 218)` looks like.

```
.text, #text, p{  
    color:rgb(234, 218, 218)  
}
```

If you want to add a text shadow in that color use the text-shadow property, you can generate a text shadow directly with our [CSS Text Shadow Generator](#).

Here you see how black text with a 4 pixel rgb(234, 218, 218) colored shadow looks like.

```
.shadow{ text-shadow: 4px 4px 2px rgb(234, 218, 218) }
```

## Border

The CSS property to change the border of an element to Yxy 72.6972, 0.3243, 0.3290 is called "border". The border property can be set on classes, ids or directly on the HTML element.

This example shows the color as border, it can be applied via the CSS property "border" or "border-color".

```
.border, #border, table{ border:4px solid rgb(234, 218, 218) }
```

If only the border color should be changed use the property border-color.

```
.border{ border-color:rgb(234, 218, 218) }
```

If you want to add a box shadow in that color use:

Here you see how a box with a 4 pixel rgb(234, 218, 218) colored shadow looks like.

```
.boxshadow{ -moz-box-shadow:4px 4px 4px  
4px rgb(234, 218, 218); -webkit-box-  
shadow:4px 4px 4px 4px rgb(234, 218, 218);  
box-shadow:4px 4px 4px 4px rgb(234, 218,  
218) }
```



# Background

The CSS property to change the background color of an element to  $\text{Yxy } 72.6972, 0.3243, 0.3290$  is called "background". The background property can be set on classes, ids or directly on the HTML element.

```
.background, #background, body{  
background: rgb(234, 218, 218) }
```

If only the background color should be changed can be used:

```
.background{ background-color: rgb(234,  
218, 218) }
```

This example shows the color as background, it is applied via the CSS property "background".

To optimize and compress your CSS code, you can use our [online CSS compressor and optimizer](#) based on csstidy. If you want to create a linear or radial gradient as background or border, check our [CSS Gradient Generator](#).

Hey! You found this booklet interesting? Support Converting Colors with the new Membership Option!

The pro membership hides all ads, plus gives you double the colors in the color bucket, and more awesome pro features!

**[Learn more, Memberships starting at \\$2.50/m!](#)**

**Follow me  
on Twitter!**

@ConvertingColor