

# Converting Colors

$Y_{xy}(73.6529, 0.3216, 0.3248)$

Have a look what the booklet for  
Yxy(73.6529, 0.3216, 0.3248)  
contains.

<b>Yxy(73.6529, 0.3216, 0.3248)</b> .....	3
<b>Conversions</b> .....	4
<b>Details</b> .....	6
<b>Harmonies</b> .....	12
<b>Previews</b> .....	24
<b>Color Blindness Simulation</b> .....	27
<b>CSS Examples</b> .....	30

# Color

**Yxy(73.6529, 0.3216, 0.3248)**

# Conversions

## Conversions Part 1

Format	Color
Hex	EBDBDF
RGB	235, 219, 223
RGB Percent	92%, 86%, 87%
CMY	0.0782, 0.1412, 0.1255
CMYK	0.00, 0.07, 0.05, 0.08
HSL	345°, 29%, 89%
HSV	345°, 7%, 92%
XYZ	72.9273, 73.6529, 80.1837
YIQ	224.2400, 8.2520, 4.6360

# Conversions

## Conversions Part 2

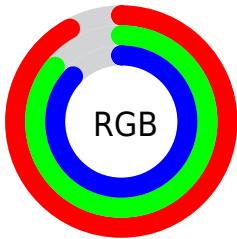
Format	Color
R <sub>Y</sub> B	235, 219, 223
Decimal	15457247
CIE Lab	88.76, 6.20, 0.01
CIE LCh	89, 6.198, 0.082
Yxy	73.6529, 0.3216, 0.3248
Android (android.graphics.Color)	4293647327 (0xFFEBDBDF)
YUV	224.2400, -0.6113, 9.4365
Hunter-Lab	85.8213, 1.4945, 4.6796

# Details

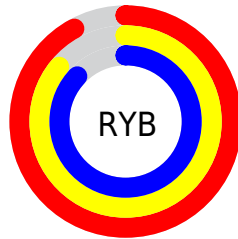
The Yxy color **73.6529, 0.3216, 0.3248** is a light color, and the websafe version is hex **CCCCCC**. A complement of this color would be **80.2841, 0.3045, 0.3332**, and the grayscale version is **74.7289, 0.3127, 0.3290**.

A 20% lighter version of the original color is **100.0000, 0.3127, 0.3290**, and **38.9618, 0.3233, 0.3236** is the 20% darker color. If you saturate the color by 10%, you get **61.3435, 0.3371, 0.3183**, and if you desaturate by 10%, it is **87.7996, 0.3090, 0.3309**.

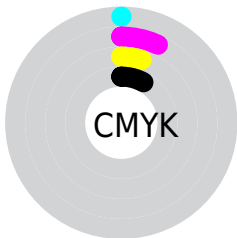
# Distribution



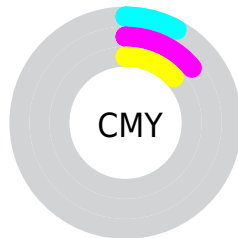
- Red (92%)
- Green (86%)
- Blue (87%)



- Red (92%)
- Yellow (86%)
- Blue (87%)



- Cyan (0%)
- Magenta (7%)
- Yellow (5%)
- Black (8%)



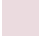
- Cyan (8%)
- Magenta (14%)
- Yellow (13%)

# Brightness & Saturation Gradients

These gradients show how the Yxy color 73.6529, 0.3216, 0.3248 changes by changing the brightness by 10 percent. The first figure shows a shift by +10% for each color and the second figure -10%.


Similar to the brightness gradients but the following saturation gradients show a change of the Yxy color 73.6529, 0.3216, 0.3248 by changing the saturation by 10% instead.



 73.6529, 0.3216,  
0.3248

 73.6529, 0.3216,  
0.3248


473.2745, 0.3175,  
0.3268

 54.5100, 0.3225,  
0.3244

124.4036, 0.3202,  
0.3255

 39.0095, 0.3237,  
0.3238


156.7803, 0.3196,  
0.3257

 26.7672, 0.3252,  
0.3231


194.3369, 0.3191,  
0.3260

 17.3984, 0.3271,  
0.3222

237.4580, 0.3187,  
0.3262

 10.5190, 0.3297,  
0.3209

286.5279, 0.3184,  
0.3263

 5.7444, 0.3335,  
0.3191

341.9311, 0.3180,

 2.6903, 0.3395,

0.3265

0.3163

404.0518, 0.3178,  
0.3266

0.9723, 0.3503,  
0.3111

0.0000, 1.0000,  
0.0000

73.6529, 0.3216,  
0.3248

73.6529, 0.3216,  
0.3248

61.3435, 0.3371,  
0.3183

87.7996, 0.3090,  
0.3309

50.7866, 0.3562,  
0.3115

96.4133, 0.3006,  
0.3290

41.9050, 0.3796,  
0.3047

34.6119, 0.4078,  
0.2983

■ 28.8127, 0.4410,  
0.2932

■ 24.4029, 0.4783,  
0.2902

■ 21.2639, 0.5177,  
0.2904

■ 19.2575, 0.5556,  
0.2948

■ 18.2077, 0.5878,  
0.3032

# Harmonies

## Analogous

The Analogous color harmony consists of three colors that are next to each other on the color wheel.



73.6529, 0.3146, 0.3194



73.6529, 0.3216, 0.3248



73.6529, 0.3263, 0.3313

# Triad

The Triadic color harmony groups three colors that are evenly spaced from another and form a triangle on the color wheel.



73.6529, 0.3216, 0.3248



73.6529, 0.3182, 0.3418



73.6529, 0.2984, 0.3205

# Complementary

The Complementary color scheme is a pair of colors which are on the opposite of each other on the color wheel.



73.6529, 0.3216, 0.3248



80.2841, 0.3045, 0.3332

# Split Complementary

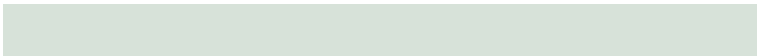
Split-complementary colors differ from the complementary color scheme. The scheme consists of three colors, the original color and two neighbors of the complement color.



73.6529, 0.2994, 0.3265



73.6529, 0.3216, 0.3248



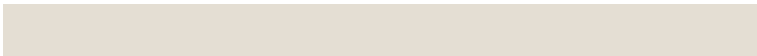
73.6529, 0.3107, 0.3389

# Square

The Square scheme is like the rectangle color scheme, but the four colors are evenly spaced on the color wheel.



73.6529, 0.3216, 0.3248



73.6529, 0.3243, 0.3412



73.6529, 0.3039, 0.3332



73.6529, 0.3012, 0.3169

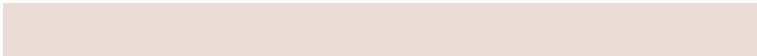


# Rectangle

The Rectangle color scheme consists of four colors that form a rectangle on the color wheel.



73.6529, 0.3216, 0.3248



73.6529, 0.3274, 0.3355



73.6529, 0.3039, 0.3332



73.6529, 0.2983, 0.3223

# Sweetspot

The Sweet Spot groups the original color and five complimentary colors.



73.6561, 0.3216, 0.3248



96.5451, 0.3152, 0.3278



73.6535, 0.3107, 0.3122



20.7008, 0.3151, 0.3279



0.0000, 0.0000, 0.0000



21.4041, 0.3127, 0.3290



# Same Dimension

The Same Dimension uses a secret algorithm to generate beautiful new colors.



73.6561, 0.3216, 0.3248



86.7209, 0.3233, 0.3240



75.5649, 0.3240, 0.3333



15.1157, 0.3254, 0.3231



10.0209, 0.5928, 0.3039



0.8019, 0.5537, 0.2824



# Inverse Universe

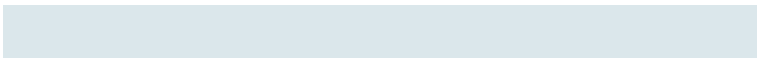
The Inverse Universe completely reimagines the original color for something new.



73.6561, 0.3216, 0.3248



86.7209, 0.3233, 0.3240



78.2367, 0.3021, 0.3247



15.1157, 0.3254, 0.3231



10.0209, 0.5928, 0.3039

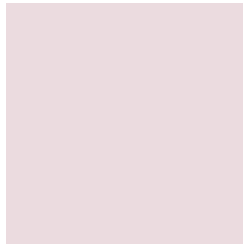


0.8019, 0.5537, 0.2824



# Previews

## White Background



This preview shows how the Yxy color 73.6529, 0.3216, 0.3248 looks on a white background.

## Color Contrast Check

Large Text (above 18pt) WCAG AA × Fail

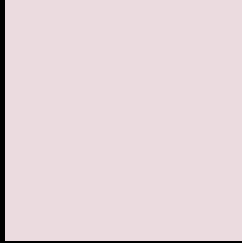
Any Text WCAG AA × Fail

Large Text (above 18pt) WCAG AAA × Fail

Any Text WCAG AAA × Fail



# Black Background



This preview shows how the Yxy color 73.6529, 0.3216, 0.3248 looks on a black background.

## Color Contrast Check

Large Text (above 18pt) WCAG AA ✓ Pass

Any Text WCAG AA ✓ Pass

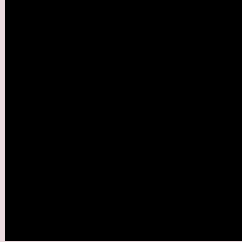
Large Text (above 18pt) WCAG AAA ✓ Pass

Any Text WCAG AAA ✓ Pass

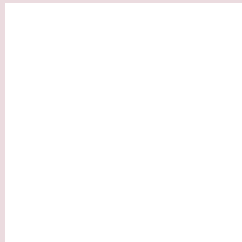
If you want to check with other color combinations, try the [Color Contrast Checker](#).

**Yxy 73.6529, 0.3216, 0.3248**

## **Background**



This preview shows how black text looks on a background with the Yxy color 73.6529, 0.3216, 0.3248.

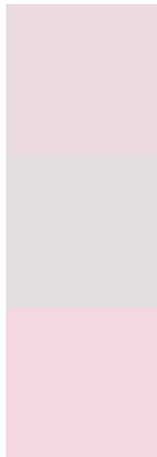


This preview shows how white text looks on a background with the Yxy color 73.6529, 0.3216, 0.3248.

# Color Blindness Simulation

Color vision deficiency is a very complex topic, and I could not describe the different causes any better than Wikipedia does, so if you want to learn more, you should check out their [article about color blindness](#).

## Dichromacy



### Original Color

73.6529, 0.3216, 0.3248

### Protanopia

73.8475, 0.3136, 0.3258

### Deuteranopia

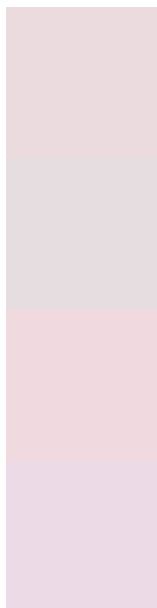
73.7266, 0.3277, 0.3208



## Tritanopia

73.5707, 0.3157, 0.3114

# Trichromacy



## Original Color

73.6529, 0.3216, 0.3248

## Protanomaly

73.7527, 0.3164, 0.3258

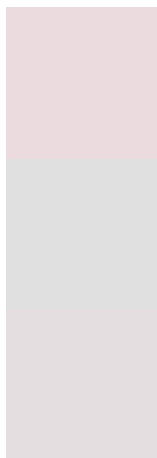
## Deuteranomaly

73.7083, 0.3254, 0.3218

## Tritanomaly

73.6888, 0.3176, 0.3165

# Monochromacy



## Original Color

73.6529, 0.3216, 0.3248

## Achromatopsia

74.5404, 0.3127, 0.3290

## Achromatomaly

74.1184, 0.3156, 0.3269

# CSS Examples

## Text

The CSS property to change the color of the text to Yxy 73.6529, 0.3216, 0.3248 is called "color". The color property can be set on classes, ids or directly on the HTML element.

This example shows how text in the color `rgb(235, 219, 223)` looks like.

```
.text, #text, p{  
    color:rgb(235, 219, 223)  
}
```

If you want to add a text shadow in that color use the text-shadow property, you can generate a text shadow directly with our [CSS Text Shadow Generator](#).

Here you see how black text with a 4 pixel rgb(235, 219, 223) colored shadow looks like.

```
.shadow{ text-shadow: 4px 4px 2px rgb(235, 219, 223) }
```

## Border

The CSS property to change the border of an element to Yxy 73.6529, 0.3216, 0.3248 is called "border". The border property can be set on classes, ids or directly on the HTML element.

This example shows the color as border, it can be applied via the CSS property "border" or "border-color".

```
.border, #border, table{ border:4px solid rgb(235, 219, 223) }
```

If only the border color should be changed use the property `border-color`.

```
.border{ border-color:rgb(235, 219, 223) }
```

If you want to add a box shadow in that color use:

Here you see how a box with a 4 pixel `rgb(235, 219, 223)` colored shadow looks like.

```
.boxshadow{ -moz-box-shadow:4px 4px 4px  
4px rgb(235, 219, 223); -webkit-box-  
shadow:4px 4px 4px 4px rgb(235, 219, 223);  
box-shadow:4px 4px 4px 4px rgb(235, 219,  
223) }
```



# Background

The CSS property to change the background color of an element to Yxy 73.6529, 0.3216, 0.3248 is called "background". The background property can be set on classes, ids or directly on the HTML element.

```
.background, #background, body{  
background: rgb(235, 219, 223) }
```

If only the background color should be changed can be used:

```
.background{ background-color: rgb(235,  
219, 223) }
```

This example shows the color as background, it is applied via the CSS property "background".

To optimize and compress your CSS code, you can use our [online CSS compressor and optimizer](#) based on csstidy. If you want to create a linear or radial gradient as background or border, check our [CSS Gradient Generator](#).

Hey! You found this booklet interesting? Support Converting Colors with the new Membership Option!

The pro membership hides all ads, plus gives you double the colors in the color bucket, and more awesome pro features!

**[Learn more, Memberships starting at \\$2.50/m!](#)**

**Follow me  
on Twitter!**

@ConvertingColor