

Converting Colors

$Yxy(73.6574, 0.3231, 0.3237)$

Have a look what the booklet for
Yxy(73.6574, 0.3231, 0.3237)
contains.

Yxy(73.4750, 0.3231, 0.3238)	3
Conversions	4
Details	6
Harmonies	12
Previews	24
Color Blindness Simulation	27
CSS Examples	30

Color

Yxy(73.4750, 0.3231, 0.3238)

Conversions

Conversions Part 1

Format	Color
Hex	EDDADF
RGB	237, 218, 223
RGB Percent	93%, 85%, 87%
CMY	0.0706, 0.1451, 0.1255
CMYK	0.00, 0.08, 0.06, 0.07
HSL	344°, 35%, 89%
HSV	344°, 8%, 93%
XYZ	73.3162, 73.4750, 80.1236
YIQ	224.2510, 9.7190, 5.5830

Conversions

Conversions Part 2

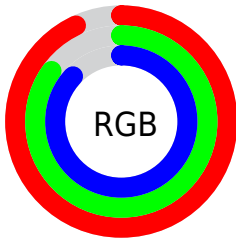
Format	Color
R _Y B	237, 218, 223
Decimal	15588063
CIE Lab	88.67, 7.37, -0.09
CIE LCh	89, 7.374, 359.289
Yxy	73.4750, 0.3231, 0.3238
Android (android.graphics.Color)	4293778143 (0xFFEDDADF)
YUV	224.2510, -0.6167, 11.1809
Hunter-Lab	85.7176, 2.6693, 4.5816

Details

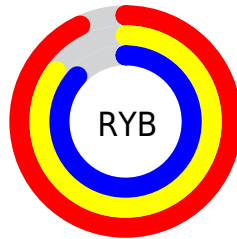
The Yxy color **73.4750, 0.3231, 0.3238** is a light color, and the websafe version is hex **CCCCCC**. A complement of this color would be **81.3058, 0.3033, 0.3343**, and the grayscale version is **74.7314, 0.3127, 0.3290**.

A 20% lighter version of the original color is **100.0000, 0.3127, 0.3290**, and **38.8453, 0.3254, 0.3223** is the 20% darker color. If you saturate the color by 10%, you get **61.1573, 0.3388, 0.3169**, and if you desaturate by 10%, it is **87.6540, 0.3104, 0.3302**.

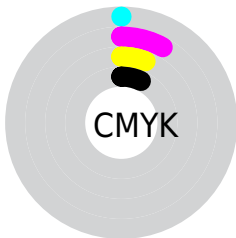
Distribution



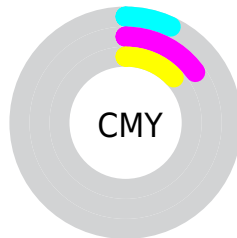
- Red (93%)
- Green (85%)
- Blue (87%)



- Red (93%)
- Yellow (85%)
- Blue (87%)



- Cyan (0%)
- Magenta (8%)
- Yellow (6%)
- Black (7%)




- Cyan (7%)
- Magenta (15%)
- Yellow (13%)

Brightness & Saturation Gradients

These gradients show how the Yxy color 73.4750, 0.3231, 0.3238 changes by changing the brightness by 10 percent. The first figure shows a shift by +10% for each color and the second figure -10%.

Similar to the brightness gradients but the following saturation gradients show a change of the Yxy color 73.4750, 0.3231, 0.3238 by changing the saturation by 10% instead.


 73.4750, 0.3231,
0.3238

 73.4750, 0.3231,
0.3238

472.6594, 0.3183,
0.3262

 54.3645, 0.3242,
0.3232


124.1513, 0.3214,
0.3246

 38.8931, 0.3256,
0.3226


156.4858, 0.3208,
0.3250

 26.6766, 0.3273,
0.3217


193.9972, 0.3202,
0.3252

 17.3305, 0.3295,
0.3206

237.0697, 0.3197,
0.3255

 10.4704, 0.3326,
0.3190

286.0878, 0.3193,
0.3257

 5.7119, 0.3370,
0.3168

341.4358, 0.3189,

 2.6707, 0.3440,

0.3259

0.3133

403.4983, 0.3186,
0.3261

0.9623, 0.3567,
0.3069

0.0000, 1.0000,
0.0000

73.4750, 0.3231,
0.3238

73.4750, 0.3231,
0.3238

61.1573, 0.3388,
0.3169

87.6540, 0.3104,
0.3302

50.6141, 0.3580,
0.3098

96.7457, 0.3017,
0.3290

41.7661, 0.3815,
0.3026

34.5241, 0.4098,
0.2960

■ 28.7907, 0.4428,
0.2907

■ 24.4579, 0.4798,
0.2878

■ 21.4031, 0.5186,
0.2884

■ 19.4822, 0.5558,
0.2933

■ 18.4973, 0.5872,
0.3021

Harmonies

Analogous

The Analogous color harmony consists of three colors that are next to each other on the color wheel.



73.4750, 0.3147, 0.3175



73.4750, 0.3231, 0.3238



73.4750, 0.3288, 0.3315

Triad

The Triadic color harmony groups three colors that are evenly spaced from another and form a triangle on the color wheel.



73.4750, 0.3231, 0.3238



73.4750, 0.3195, 0.3443



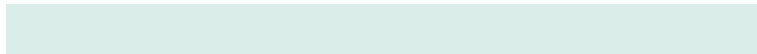
73.4750, 0.2957, 0.3190

Complementary

The Complementary color scheme is a pair of colors which are on the opposite of each other on the color wheel.



73.4750, 0.3231, 0.3238



81.3058, 0.3033, 0.3343

Split Complementary

Split-complementary colors differ from the complementary color scheme. The scheme consists of three colors, the original color and two neighbors of the complement color.



73.4750, 0.2969, 0.3262



73.4750, 0.3231, 0.3238



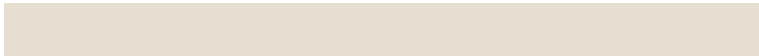
73.4750, 0.3106, 0.3409

Square

The Square scheme is like the rectangle color scheme, but the four colors are evenly spaced on the color wheel.



73.4750, 0.3231, 0.3238



73.4750, 0.3266, 0.3434



73.4750, 0.3024, 0.3342



73.4750, 0.2989, 0.3147

Rectangle

The Rectangle color scheme consists of four colors that form a rectangle on the color wheel.



73.4750, 0.3231, 0.3238



73.4750, 0.3302, 0.3365



73.4750, 0.3024, 0.3342



73.4750, 0.2956, 0.3212

Sweetspot

The Sweet Spot groups the original color and five complimentary colors.



73.4782, 0.3231, 0.3238



96.5492, 0.3152, 0.3277



73.4057, 0.3101, 0.3092



20.7016, 0.3150, 0.3278



0.0000, 0.0000, 0.0000



21.4041, 0.3127, 0.3290

Same Dimension

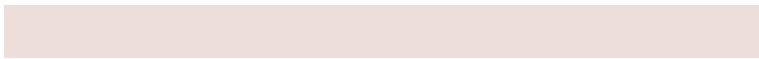
The Same Dimension uses a secret algorithm to generate beautiful new colors.



73.4782, 0.3231, 0.3238



83.6431, 0.3260, 0.3224



75.5437, 0.3261, 0.3337



15.1190, 0.3252, 0.3228



10.0393, 0.5887, 0.3017



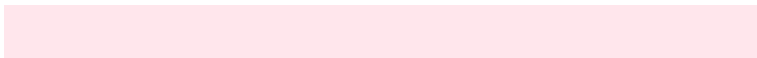
0.8037, 0.5494, 0.2800

Inverse Universe

The Inverse Universe completely reimagines the original color for something new.



73.4782, 0.3231, 0.3238



83.6431, 0.3260, 0.3224



79.0573, 0.3003, 0.3243



15.1190, 0.3252, 0.3228



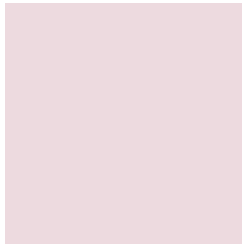
10.0393, 0.5887, 0.3017



0.8037, 0.5494, 0.2800

Previews

White Background



This preview shows how the Yxy color 73.4750, 0.3231, 0.3238 looks on a white background.

Color Contrast Check

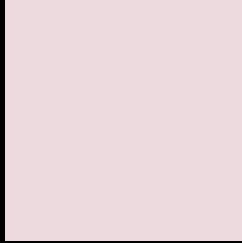
Large Text (above 18pt) WCAG AA × Fail

Any Text WCAG AA × Fail

Large Text (above 18pt) WCAG AAA × Fail

Any Text WCAG AAA × Fail

Black Background



This preview shows how the Yxy color 73.4750, 0.3231, 0.3238 looks on a black background.

Color Contrast Check

Large Text (above 18pt) WCAG AA ✓ Pass

Any Text WCAG AA ✓ Pass

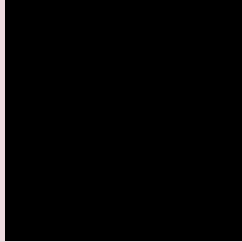
Large Text (above 18pt) WCAG AAA ✓ Pass

Any Text WCAG AAA ✓ Pass

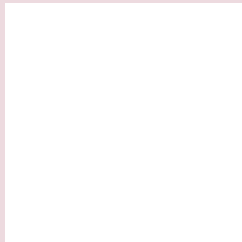
If you want to check with other color combinations, try the [Color Contrast Checker](#).

Yxy 73.4750, 0.3231, 0.3238

Background



This preview shows how black text looks on a background with the Yxy color 73.4750, 0.3231, 0.3238.

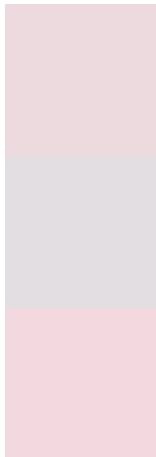


This preview shows how white text looks on a background with the Yxy color 73.4750, 0.3231, 0.3238.

Color Blindness Simulation

Color vision deficiency is a very complex topic, and I could not describe the different causes any better than Wikipedia does, so if you want to learn more, you should check out their [article about color blindness](#).

Dichromacy



Original Color

73.4750, 0.3231, 0.3238

Protanopia

73.8475, 0.3136, 0.3258

Deuteranopia

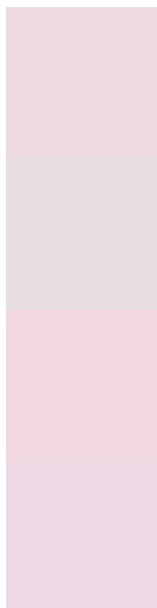
73.6725, 0.3284, 0.3218



Tritanopia

73.1721, 0.3171, 0.3114

Trichromacy



Original Color

73.4750, 0.3231, 0.3238

Protanomaly

73.9177, 0.3171, 0.3258

Deuteranomaly

73.6542, 0.3261, 0.3228

Tritanomaly

73.4600, 0.3198, 0.3165

Monochromacy



Original Color

73.4750, 0.3231, 0.3238

Achromatopsia

74.5404, 0.3127, 0.3290

Achromatomaly

74.2824, 0.3164, 0.3269

CSS Examples

Text

The CSS property to change the color of the text to Yxy 73.4750, 0.3231, 0.3238 is called "color". The color property can be set on classes, ids or directly on the HTML element.

This example shows how text in the color `rgb(237, 218, 223)` looks like.

```
.text, #text, p{  
    color:rgb(237, 218, 223)  
}
```

If you want to add a text shadow in that color use the text-shadow property, you can generate a text shadow directly with our [CSS Text Shadow Generator](#).

Here you see how black text with a 4 pixel rgb(237, 218, 223) colored shadow looks like.

```
.shadow{ text-shadow: 4px 4px 2px rgb(237, 218, 223) }
```

Border

The CSS property to change the border of an element to Yxy 73.4750, 0.3231, 0.3238 is called "border". The border property can be set on classes, ids or directly on the HTML element.

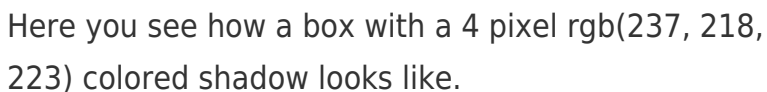
This example shows the color as border, it can be applied via the CSS property "border" or "border-color".

```
.border, #border, table{ border:4px solid rgb(237, 218, 223) }
```

If only the border color should be changed use the property `border-color`.

```
.border{ border-color:rgb(237, 218, 223) }
```

If you want to add a box shadow in that color use:



Here you see how a box with a 4 pixel `rgb(237, 218, 223)` colored shadow looks like.

```
.boxshadow{ -moz-box-shadow:4px 4px 4px 4px rgb(237, 218, 223); -webkit-box-shadow:4px 4px 4px 4px rgb(237, 218, 223); box-shadow:4px 4px 4px 4px rgb(237, 218, 223) }
```


Background

The CSS property to change the background color of an element to Yxy 73.4750, 0.3231, 0.3238 is called "background". The background property can be set on classes, ids or directly on the HTML element.

```
.background, #background, body{  
background: rgb(237, 218, 223) }
```

If only the background color should be changed can be used:

```
.background{ background-color: rgb(237,  
218, 223) }
```

This example shows the color as background, it is applied via the CSS property "background".

To optimize and compress your CSS code, you can use our [online CSS compressor and optimizer](#) based on csstidy. If you want to create a linear or radial gradient as background or border, check our [CSS Gradient Generator](#).

Hey! You found this booklet interesting? Support Converting Colors with the new Membership Option!

The pro membership hides all ads, plus gives you double the colors in the color bucket, and more awesome pro features!

[Learn more, Memberships starting at \\$2.50/m!](#)

**Follow me
on Twitter!**

@ConvertingColor