

# Converting Colors

$Y_{xy}(74.1700, 0.3194, 0.3191)$

Have a look what the booklet for  
Yxy(74.1700, 0.3194, 0.3191)  
contains.

<b>Yxy(74.2690, 0.3196, 0.3196)</b> .....	3
<b><i>Conversions</i></b> .....	4
<b><i>Details</i></b> .....	6
<b><i>Harmonies</i></b> .....	12
<b><i>Previews</i></b> .....	24
<b><i>Color Blindness Simulation</i></b> .....	27
<b><i>CSS Examples</i></b> .....	30

# Color

**Yxy(74.2690, 0.3196, 0.3196)**

# Conversions

## Conversions Part 1

Format	Color
Hex	EDDBE4
RGB	237, 219, 228
RGB Percent	93%, 86%, 89%
CMY	0.0705, 0.1412, 0.1058
CMYK	0.00, 0.08, 0.04, 0.07
HSL	330°, 33%, 89%
HSV	330°, 8%, 93%
XYZ	74.2690, 74.2690, 83.8431
YIQ	225.4080, 7.8390, 6.6150

# Conversions

## Conversions Part 2

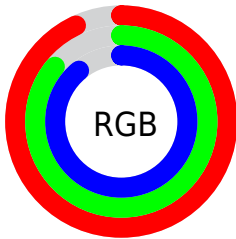
<b>Format</b>	<b>Color</b>
R <sub>Y</sub> B	237, 219, 228
Decimal	15588324
CIE Lab	89.05, 7.73, -2.20
CIE LCh	89, 8.038, 344.148
Yxy	74.2690, 0.3196, 0.3196
Android (android.graphics.Color)	4293778404 (0xFFEDDBE4)
YUV	225.4080, 1.2779, 10.1662
Hunter-Lab	86.1795, 3.0163, 2.6430

# Details

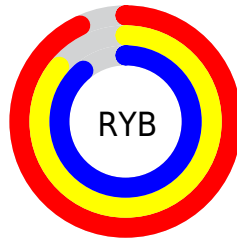
The Yxy color **74.2690, 0.3196, 0.3196** is a light color, and the websafe version is hex **CCCCCC**. A complement of this color would be **81.2414, 0.3063, 0.3386**, and the grayscale version is **75.5952, 0.3127, 0.3290**.

A 20% lighter version of the original color is **100.0000, 0.3127, 0.3290**, and **39.3918, 0.3208, 0.3169** is the 20% darker color. If you saturate the color by 10%, you get **62.1390, 0.3303, 0.3066**, and if you desaturate by 10%, it is **88.2111, 0.3107, 0.3319**.

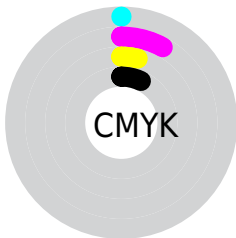
# Distribution



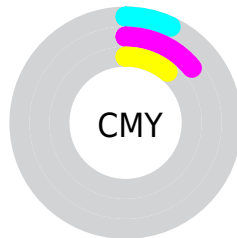
- Red (93%)
- Green (86%)
- Blue (89%)



- Red (93%)
- Yellow (86%)
- Blue (89%)



- Cyan (0%)
- Magenta (8%)
- Yellow (4%)
- Black (7%)




- Cyan (7%)
- Magenta (14%)
- Yellow (11%)


# Brightness & Saturation Gradients

These gradients show how the Yxy color 74.2690, 0.3196, 0.3196 changes by changing the brightness by 10 percent. The first figure shows a shift by +10% for each color and the second figure -10%.


Similar to the brightness gradients but the following saturation gradients show a change of the Yxy color 74.2690, 0.3196, 0.3196 by changing the saturation by 10% instead.




 74.2690, 0.3196,  
0.3196

 74.2690, 0.3196,  
0.3196


475.4013, 0.3164,  
0.3239

 55.0142, 0.3203,  
0.3186

125.2771, 0.3185,  
0.3211

 39.4131, 0.3212,  
0.3174

157.7991, 0.3181,  
0.3217

 27.0813, 0.3223,  
0.3159


195.5125, 0.3177,  
0.3222

 17.6343, 0.3238,  
0.3139

238.8014, 0.3174,  
0.3226

 10.6877, 0.3257,  
0.3113

288.0503, 0.3171,  
0.3230

 5.8573, 0.3286,  
0.3075

343.6437, 0.3169,

 2.7585, 0.3329,

0.3233

0.3016

405.9659, 0.3166,  
0.3236

■ 1.0070, 0.3407,  
0.2913

■ 0.0000, 0.6951,  
0.0000

■ 74.2690, 0.3196,  
0.3196

■ 74.2690, 0.3196,  
0.3196

■ 62.1390, 0.3303,  
0.3066

■ 88.2111, 0.3107,  
0.3319

■ 51.7366, 0.3432,  
0.2932

■ 96.5358, 0.3036,  
0.3322

■ 42.9847, 0.3585,  
0.2797

■ 96.7484, 0.3017,  
0.3290

■ 35.7967, 0.3764,  
0.2669

■ 30.0782, 0.3970,  
0.2557

■ 25.7241, 0.4198,  
0.2473

■ 22.6156, 0.4443,  
0.2430

■ 20.6126, 0.4691,  
0.2439

■ 19.5285, 0.4930,  
0.2502

# Harmonies

## Analogous

The Analogous color harmony consists of three colors that are next to each other on the color wheel.



74.2690, 0.3099, 0.3142



74.2690, 0.3196, 0.3196



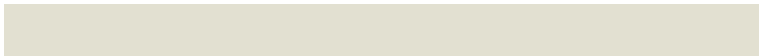
74.2690, 0.3276, 0.3274

# Triad

The Triadic color harmony groups three colors that are evenly spaced from another and form a triangle on the color wheel.



74.2690, 0.3196, 0.3196



74.2690, 0.3244, 0.3457



74.2690, 0.2943, 0.3218

# Complementary

The Complementary color scheme is a pair of colors which are on the opposite of each other on the color wheel.



74.2690, 0.3196, 0.3196



81.2414, 0.3063, 0.3386

# Split Complementary

Split-complementary colors differ from the complementary color scheme. The scheme consists of three colors, the original color and two neighbors of the complement color.



74.2690, 0.2981, 0.3304



74.2690, 0.3196, 0.3196



74.2690, 0.3153, 0.3444

# Square

The Square scheme is like the rectangle color scheme, but the four colors are evenly spaced on the color wheel.



74.2690, 0.3196, 0.3196



74.2690, 0.3303, 0.3425



74.2690, 0.3057, 0.3387



74.2690, 0.2954, 0.3154



# Rectangle

The Rectangle color scheme consists of four colors that form a rectangle on the color wheel.



74.2690, 0.3196, 0.3196



74.2690, 0.3307, 0.3331



74.2690, 0.3057, 0.3387



74.2690, 0.2951, 0.3245

# Sweetspot

The Sweet Spot groups the original color and five complimentary colors.



74.2722, 0.3196, 0.3196



96.6264, 0.3144, 0.3266



73.2226, 0.3070, 0.3100



20.7174, 0.3144, 0.3267



0.0000, 0.0000, 0.0000



21.4041, 0.3127, 0.3290



# Same Dimension

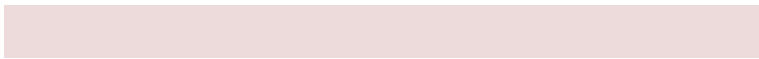
The Same Dimension uses a secret algorithm to generate beautiful new colors.



74.2722, 0.3196, 0.3196



85.5061, 0.3210, 0.3178



73.7990, 0.3256, 0.3287



15.1800, 0.3214, 0.3172



10.5812, 0.4950, 0.2501



0.8503, 0.4644, 0.2332



# Inverse Universe

The Inverse Universe completely reimagines the original color for something new.



74.2722, 0.3196, 0.3196



85.5061, 0.3210, 0.3178



81.7390, 0.3011, 0.3293



15.1800, 0.3214, 0.3172



10.5812, 0.4950, 0.2501

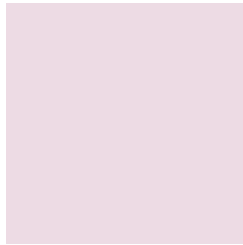


0.8503, 0.4644, 0.2332



# Previews

## White Background



This preview shows how the Yxy color 74.2690, 0.3196, 0.3196 looks on a white background.

## Color Contrast Check

Large Text (above 18pt) WCAG AA × Fail

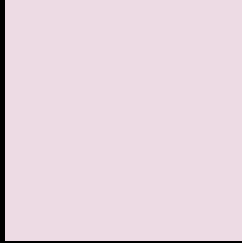
Any Text WCAG AA × Fail

Large Text (above 18pt) WCAG AAA × Fail

Any Text WCAG AAA × Fail



# Black Background



This preview shows how the Yxy color 74.2690, 0.3196, 0.3196 looks on a black background.

## Color Contrast Check

Large Text (above 18pt) WCAG AA ✓ Pass

Any Text WCAG AA ✓ Pass

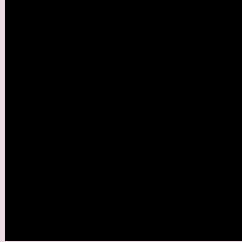
Large Text (above 18pt) WCAG AAA ✓ Pass

Any Text WCAG AAA ✓ Pass

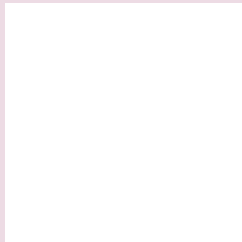
If you want to check with other color combinations, try the [Color Contrast Checker](#).

**Yxy 74.2690, 0.3196, 0.3196**

## **Background**



This preview shows how black text looks on a background with the Yxy color 74.2690, 0.3196, 0.3196.

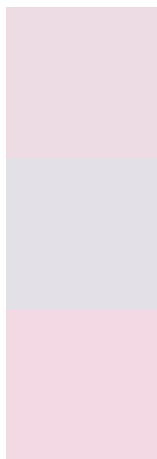


This preview shows how white text looks on a background with the Yxy color 74.2690, 0.3196, 0.3196.

# Color Blindness Simulation

Color vision deficiency is a very complex topic, and I could not describe the different causes any better than Wikipedia does, so if you want to learn more, you should check out their [article about color blindness](#).

## Dichromacy



### Original Color

74.2690, 0.3196, 0.3196

### Protanopia

74.6573, 0.3103, 0.3216

### Deuteranopia

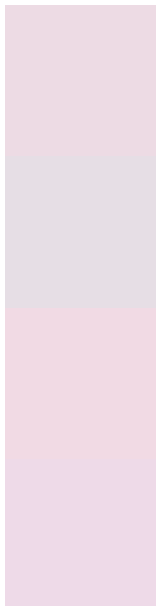
74.2818, 0.3241, 0.3177



## Tritanopia

74.3181, 0.3157, 0.3115

# Trichromacy



## Original Color

74.2690, 0.3196, 0.3196

## Protanomaly

74.7227, 0.3138, 0.3216

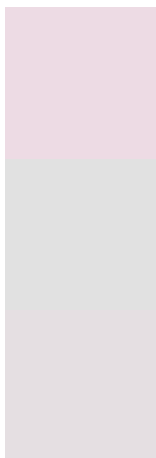
## Deuteranomaly

74.4450, 0.3226, 0.3187

## Tritanomaly

74.1461, 0.3177, 0.3145

# Monochromacy



## Original Color

74.2690, 0.3196, 0.3196

## Achromatopsia

75.2942, 0.3127, 0.3290

## Achromatomaly

74.9244, 0.3150, 0.3258

# CSS Examples

## Text

The CSS property to change the color of the text to Yxy 74.2690, 0.3196, 0.3196 is called "color". The color property can be set on classes, ids or directly on the HTML element.

This example shows how text in the color `rgb(237, 219, 228)` looks like.

```
.text, #text, p{  
    color:rgb(237, 219, 228)  
}
```

If you want to add a text shadow in that color use the text-shadow property, you can generate a text shadow directly with our [CSS Text Shadow Generator](#).

Here you see how black text with a 4 pixel rgb(237, 219, 228) colored shadow looks like.

```
.shadow{ text-shadow: 4px 4px 2px rgb(237, 219, 228) }
```

## Border

The CSS property to change the border of an element to Yxy 74.2690, 0.3196, 0.3196 is called "border". The border property can be set on classes, ids or directly on the HTML element.

This example shows the color as border, it can be applied via the CSS property "border" or "border-color".

```
.border, #border, table{ border:4px solid rgb(237, 219, 228) }
```

If only the border color should be changed use the property `border-color`.

```
.border{ border-color:rgb(237, 219, 228) }
```

If you want to add a box shadow in that color use:

Here you see how a box with a 4 pixel `rgb(237, 219, 228)` colored shadow looks like.

```
.boxshadow{ -moz-box-shadow:4px 4px 4px  
4px rgb(237, 219, 228); -webkit-box-  
shadow:4px 4px 4px 4px rgb(237, 219, 228);  
box-shadow:4px 4px 4px 4px rgb(237, 219,  
228) }
```



# Background

The CSS property to change the background color of an element to Yxy 74.2690, 0.3196, 0.3196 is called "background". The background property can be set on classes, ids or directly on the HTML element.

```
.background, #background, body{  
background: rgb(237, 219, 228) }
```

If only the background color should be changed can be used:

```
.background{ background-color: rgb(237,  
219, 228) }
```

This example shows the color as background, it is applied via the CSS property "background".

To optimize and compress your CSS code, you can use our [online CSS compressor and optimizer](#) based on csstidy. If you want to create a linear or radial gradient as background or border, check our [CSS Gradient Generator](#).

Hey! You found this booklet interesting? Support Converting Colors with the new Membership Option!

The pro membership hides all ads, plus gives you double the colors in the color bucket, and more awesome pro features!

**[Learn more, Memberships starting at \\$2.50/m!](#)**

**Follow me  
on Twitter!**

@ConvertingColor