

Converting Colors

$Yxy(74.4698, 0.3260, 0.3311)$

Have a look what the booklet for
Yxy(74.4698, 0.3260, 0.3311)
contains.

Yxy(74.2529, 0.3263, 0.3311)	3
Conversions	4
Details	6
Harmonies	12
Previews	24
Color Blindness Simulation	27
CSS Examples	30

Color

Yxy(74.2529, 0.3263, 0.3311)

Conversions

Conversions Part 1

Format	Color
Hex	EDDCDA
RGB	237, 220, 218
RGB Percent	93%, 86%, 85%
CMY	0.0706, 0.1372, 0.1449
CMYK	0.00, 0.07, 0.08, 0.07
HSL	6°, 34%, 89%
HSV	6°, 8%, 93%
XYZ	73.1764, 74.2529, 76.8319
YIQ	224.8550, 10.7740, 2.9820

Conversions

Conversions Part 2

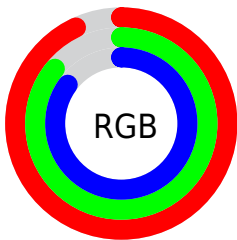
Format	Color
R _Y B	237, 220, 218
Decimal	15588570
CIE Lab	89.04, 5.50, 3.05
CIE LCh	89, 6.286, 29.033
Yxy	74.2529, 0.3263, 0.3311
Android (android.graphics.Color)	4293778650 (0xFFEDDCDA)
YUV	224.8550, -3.3795, 10.6512
Hunter-Lab	86.1701, 0.7861, 7.4543

Details

The Yxy color **74.2529, 0.3263, 0.3311** is a light color, and the websafe version is hex **CCCCCC**. A complement of this color would be **80.4631, 0.3003, 0.3269**, and the grayscale version is **75.2077, 0.3127, 0.3290**.

A 20% lighter version of the original color is **100.0000, 0.3127, 0.3290**, and **39.3784, 0.3296, 0.3318** is the 20% darker color. If you saturate the color by 10%, you get **62.6493, 0.3468, 0.3339**, and if you desaturate by 10%, it is **87.4578, 0.3097, 0.3285**.

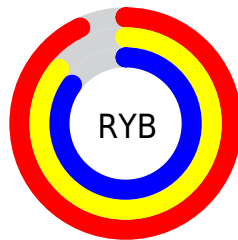
Distribution



Red (93%)

Green (86%)

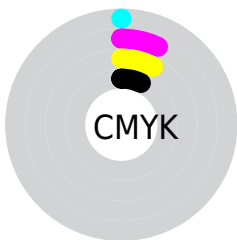
Blue (85%)



Red (93%)

Yellow (86%)

Blue (85%)

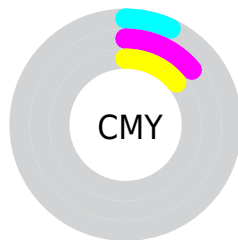


Cyan (0%)

Magenta (7%)

Yellow (8%)

Black (7%)



Cyan (7%)

Magenta (14%)

Yellow (14%)

Brightness & Saturation Gradients


These gradients show how the Yxy color 74.2529, 0.3263, 0.3311 changes by changing the brightness by 10 percent. The first figure shows a shift by +10% for each color and the second figure -10%.

Similar to the brightness gradients but the following saturation gradients show a change of the Yxy color 74.2529, 0.3263, 0.3311 by changing the saturation by 10% instead.


 74.2529, 0.3263,
0.3311

 74.2529, 0.3263,
0.3311


475.3458, 0.3200,
0.3302

 55.0011, 0.3277,
0.3313


125.2542, 0.3241,
0.3308

 39.4026, 0.3295,
0.3315


157.7725, 0.3233,
0.3307

 27.0730, 0.3318,
0.3319


195.4818, 0.3225,
0.3306

 17.6281, 0.3347,
0.3322

238.7663, 0.3219,
0.3305

 10.6833, 0.3388,
0.3328

288.0106, 0.3213,
0.3304

 5.8543, 0.3446,
0.3334

343.5990, 0.3209,

 2.7567, 0.3538,

0.3303

405.9159, 0.3204,
0.3302

0.3344

1.0061, 0.3709,
0.3362

0.0000, 1.0000,
0.0000

74.2529, 0.3263,
0.3311

74.2529, 0.3263,
0.3311

62.6493, 0.3468,
0.3339

87.4578, 0.3097,
0.3285

52.5767, 0.3720,
0.3369

96.7442, 0.3017,
0.3290

43.9742, 0.4027,
0.3398

36.7727, 0.4394,
0.3424

■ 30.8981, 0.4814,
0.3444

■ 26.2690, 0.5267,
0.3451

■ 22.7951, 0.5705,
0.3439

■ 20.3739, 0.6067,
0.3407

■ 18.8827, 0.6298,
0.3361

Harmonies

Analogous

The Analogous color harmony consists of three colors that are next to each other on the color wheel.



74.2529, 0.3215, 0.3245



74.2529, 0.3263, 0.3311



74.2529, 0.3274, 0.3372

Triad

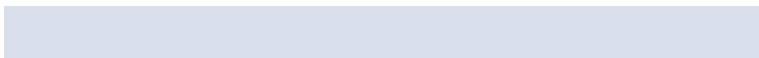
The Triadic color harmony groups three colors that are evenly spaced from another and form a triangle on the color wheel.



74.2529, 0.3263, 0.3311



74.2529, 0.3110, 0.3392



74.2529, 0.3010, 0.3169

Complementary

The Complementary color scheme is a pair of colors which are on the opposite of each other on the color wheel.



74.2529, 0.3263, 0.3311



80.4631, 0.3003, 0.3269

Split Complementary

Split-complementary colors differ from the complementary color scheme. The scheme consists of three colors, the original color and two neighbors of the complement color.



74.2529, 0.2982, 0.3206



74.2529, 0.3263, 0.3311



74.2529, 0.3040, 0.3335

Square

The Square scheme is like the rectangle color scheme, but the four colors are evenly spaced on the color wheel.



74.2529, 0.3263, 0.3311



74.2529, 0.3185, 0.3420



74.2529, 0.2993, 0.3267



74.2529, 0.3068, 0.3164

Rectangle

The Rectangle color scheme consists of four colors that form a rectangle on the color wheel.



74.2529, 0.3263, 0.3311



74.2529, 0.3259, 0.3402



74.2529, 0.2993, 0.3267



74.2529, 0.2996, 0.3178

Sweetspot

The Sweet Spot groups the original color and five complimentary colors.



74.2562, 0.3263, 0.3311



96.7933, 0.3159, 0.3295



74.1721, 0.3149, 0.3114



20.7514, 0.3158, 0.3295



0.0000, 0.0000, 0.0000



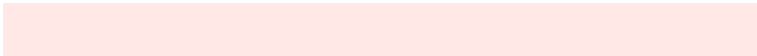
21.4041, 0.3127, 0.3290

Same Dimension

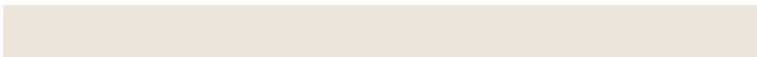
The Same Dimension uses a secret algorithm to generate beautiful new colors.



74.2562, 0.3263, 0.3311



84.7369, 0.3301, 0.3317



79.3368, 0.3253, 0.3409



15.3048, 0.3290, 0.3315



10.2868, 0.6316, 0.3367



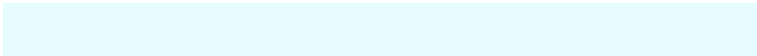
0.8922, 0.6132, 0.3513

Inverse Universe

The Inverse Universe completely reimagines the original color for something new.



80.4631, 0.3003, 0.3269



93.8079, 0.2972, 0.3263



75.2142, 0.3004, 0.3168



16.8399, 0.2981, 0.3265



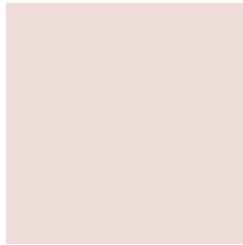
29.2882, 0.2156, 0.2962



2.3766, 0.2170, 0.3011

Previews

White Background



This preview shows how the Yxy color 74.2529, 0.3263, 0.3311 looks on a white background.

Color Contrast Check

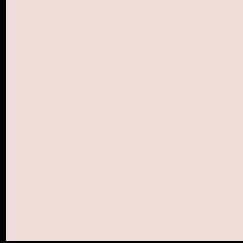
Large Text (above 18pt) WCAG AA × Fail

Any Text WCAG AA × Fail

Large Text (above 18pt) WCAG AAA × Fail

Any Text WCAG AAA × Fail

Black Background



This preview shows how the Yxy color 74.2529, 0.3263, 0.3311 looks on a black background.

Color Contrast Check

Large Text (above 18pt) WCAG AA ✓ Pass

Any Text WCAG AA ✓ Pass

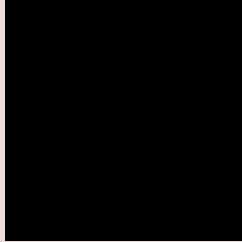
Large Text (above 18pt) WCAG AAA ✓ Pass

Any Text WCAG AAA ✓ Pass

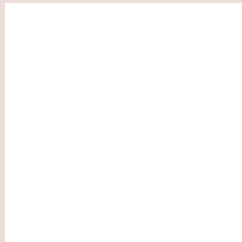
If you want to check with other color combinations, try the [Color Contrast Checker](#).

Yxy 74.2529, 0.3263, 0.3311

Background



This preview shows how black text looks on a background with the Yxy color 74.2529, 0.3263, 0.3311.

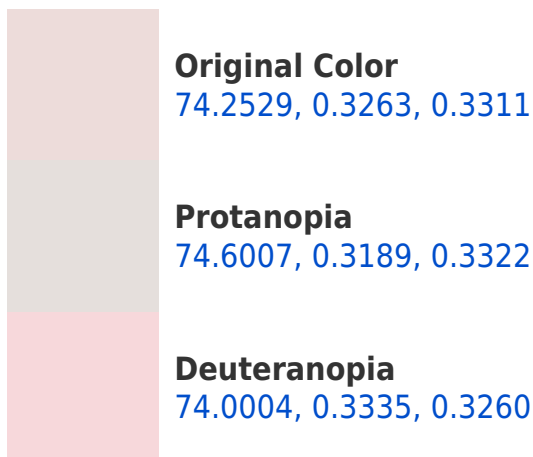


This preview shows how white text looks on a background with the Yxy color 74.2529, 0.3263, 0.3311.

Color Blindness Simulation

Color vision deficiency is a very complex topic, and I could not describe the different causes any better than Wikipedia does, so if you want to learn more, you should check out their [article about color blindness](#).

Dichromacy





Tritanopia

73.9746, 0.3165, 0.3105

Trichromacy



Original Color

74.2529, 0.3263, 0.3311

Protanomaly

74.5128, 0.3218, 0.3322

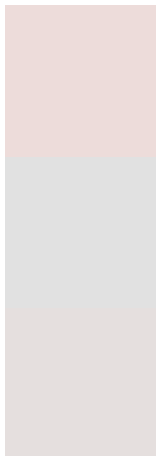
Deuteranomaly

73.7949, 0.3304, 0.3270

Tritanomaly

73.9771, 0.3197, 0.3176

Monochromacy



Original Color

74.2529, 0.3263, 0.3311

Achromatopsia

75.2942, 0.3127, 0.3290

Achromatomaly

74.7073, 0.3176, 0.3301

CSS Examples

Text

The CSS property to change the color of the text to Yxy 74.2529, 0.3263, 0.3311 is called "color". The color property can be set on classes, ids or directly on the HTML element.

This example shows how text in the color `rgb(237, 220, 218)` looks like.

```
.text, #text, p{  
    color:rgb(237, 220, 218)  
}
```

If you want to add a text shadow in that color use the text-shadow property, you can generate a text shadow directly with our [CSS Text Shadow Generator](#).

Here you see how black text with a 4 pixel rgb(237, 220, 218) colored shadow looks like.

```
.shadow{ text-shadow: 4px 4px 2px rgb(237, 220, 218) }
```

Border

The CSS property to change the border of an element to Yxy 74.2529, 0.3263, 0.3311 is called "border". The border property can be set on classes, ids or directly on the HTML element.

This example shows the color as border, it can be applied via the CSS property "border" or "border-color".

```
.border, #border, table{ border:4px solid rgb(237, 220, 218) }
```

If only the border color should be changed use the property border-color.

```
.border{ border-color:rgb(237, 220, 218) }
```

If you want to add a box shadow in that color use:

Here you see how a box with a 4 pixel rgb(237, 220, 218) colored shadow looks like.

```
.boxshadow{ -moz-box-shadow:4px 4px 4px  
4px rgb(237, 220, 218); -webkit-box-  
shadow:4px 4px 4px 4px rgb(237, 220, 218);  
box-shadow:4px 4px 4px 4px rgb(237, 220,  
218) }
```


Background

The CSS property to change the background color of an element to Yxy 74.2529, 0.3263, 0.3311 is called "background". The background property can be set on classes, ids or directly on the HTML element.

```
.background, #background, body{  
background: rgb(237, 220, 218) }
```

If only the background color should be changed can be used:

```
.background{ background-color: rgb(237,  
220, 218) }
```

This example shows the color as background, it is applied via the CSS property "background".

To optimize and compress your CSS code, you can use our [online CSS compressor and optimizer](#) based on csstidy. If you want to create a linear or radial gradient as background or border, check our [CSS Gradient Generator](#).

Hey! You found this booklet interesting? Support Converting Colors with the new Membership Option!

The pro membership hides all ads, plus gives you double the colors in the color bucket, and more awesome pro features!

[Learn more, Memberships starting at \\$2.50/m!](#)

**Follow me
on Twitter!**

@ConvertingColor