

Converting Colors

$Yxy(74.5158, 0.3320, 0.3364)$

Have a look what the booklet for
Yxy(74.5158, 0.3320, 0.3364)
contains.

Yxy(74.5158, 0.3320, 0.3364)	3
Conversions	4
Details	6
Harmonies	12
Previews	24
Color Blindness Simulation	27
CSS Examples	30

Color

Yxy(74.5158, 0.3320, 0.3364)

Conversions

Conversions Part 1

Format	Color
Hex	F0DCD5
RGB	240, 220, 213
RGB Percent	94%, 86%, 84%
CMY	0.0588, 0.1372, 0.1647
CMYK	0.00, 0.08, 0.11, 0.06
HSL	16°, 47%, 89%
HSV	16°, 11%, 94%
XYZ	73.5412, 74.5158, 73.4526
YIQ	225.1820, 14.1670, 2.0630

Conversions

Conversions Part 2

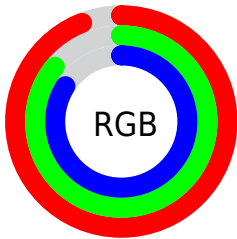
Format	Color
R _Y B	240, 222, 213
Decimal	15785173
CIE Lab	89.17, 5.72, 5.91
CIE LCh	89, 8.229, 45.943
Yxy	74.5158, 0.3320, 0.3364
Android (android.graphics.Color)	4293975253 (0xFF0DCD5)
YUV	225.1820, -6.0057, 12.9954
Hunter-Lab	86.3225, 1.0059, 9.9754

Details

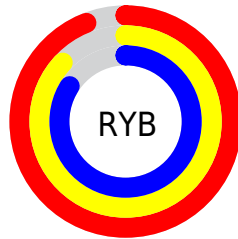
The Yxy color **74.5158, 0.3320, 0.3364** is a light color, and the websafe version is hex **CCCCCC**. A complement of this color would be **78.7184, 0.2953, 0.3215**, and the grayscale version is **75.4719, 0.3127, 0.3290**.

A 20% lighter version of the original color is **100.0000, 0.3127, 0.3290**, and **39.5692, 0.3371, 0.3386** is the 20% darker color. If you saturate the color by 10%, you get **64.5488, 0.3527, 0.3434**, and if you desaturate by 10%, it is **85.6619, 0.3147, 0.3298**.

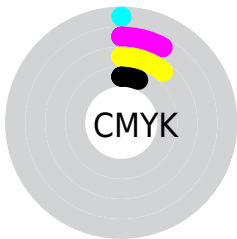
Distribution



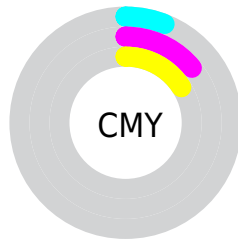
- Red (94%)
- Green (86%)
- Blue (84%)



- Red (94%)
- Yellow (87%)
- Blue (84%)



- Cyan (0%)
- Magenta (8%)
- Yellow (11%)
- Black (6%)





- Cyan (6%)
- Magenta (14%)
- Yellow (16%)

Brightness & Saturation Gradients


These gradients show how the Yxy color 74.5158, 0.3320, 0.3364 changes by changing the brightness by 10 percent. The first figure shows a shift by +10% for each color and the second figure -10%.

Similar to the brightness gradients but the following saturation gradients show a change of the Yxy color 74.5158, 0.3320, 0.3364 by changing the saturation by 10% instead.

 74.5158, 0.3320,
0.3364

 74.5158, 0.3320,
0.3364


476.2517, 0.3231,
0.3331

 55.2163, 0.3340,
0.3371

125.6267, 0.3289,
0.3353

 39.5749, 0.3366,
0.3381


158.2069, 0.3277,
0.3348

 27.2073, 0.3398,
0.3392


195.9828, 0.3267,
0.3344

 17.7290, 0.3440,
0.3407

239.3388, 0.3258,
0.3341

 10.7556, 0.3497,
0.3426

288.6593, 0.3250,
0.3338

 5.9027, 0.3580,
0.3453

344.3287, 0.3243,

 2.7860, 0.3711,

0.3335

0.3493

406.7313, 0.3236,
0.3333

■ 1.0211, 0.3980,
0.3589

■ 0.0000, 1.0000,
0.0000

■ 74.5158, 0.3320,
0.3364

■ 74.5158, 0.3320,
0.3364

■ 64.5488, 0.3527,
0.3434

■ 85.6619, 0.3147,
0.3298

■ 55.7123, 0.3775,
0.3507

■ 97.2677, 0.3035,
0.3290

■ 47.9687, 0.4066,
0.3578

■ 41.2745, 0.4402,
0.3642

■ 35.5833, 0.4776,
0.3690

■ 30.8449, 0.5168,
0.3711

■ 27.0046, 0.5547,
0.3693

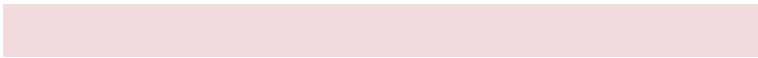
■ 24.0014, 0.5869,
0.3632

■ 22.0007, 0.6083,
0.3552

Harmonies

Analogous

The Analogous color harmony consists of three colors that are next to each other on the color wheel.



74.5158, 0.3283, 0.3279



74.5158, 0.3320, 0.3364



74.5158, 0.3305, 0.3431

Triad

The Triadic color harmony groups three colors that are evenly spaced from another and form a triangle on the color wheel.



74.5158, 0.3320, 0.3364



74.5158, 0.3050, 0.3385



74.5158, 0.3013, 0.3123

Complementary

The Complementary color scheme is a pair of colors which are on the opposite of each other on the color wheel.



74.5158, 0.3320, 0.3364



78.7184, 0.2953, 0.3215

Split Complementary

Split-complementary colors differ from the complementary color scheme. The scheme consists of three colors, the original color and two neighbors of the complement color.



74.5158, 0.2952, 0.3148



74.5158, 0.3320, 0.3364



74.5158, 0.2974, 0.3299

Square

The Square scheme is like the rectangle color scheme, but the four colors are evenly spaced on the color wheel.



74.5158, 0.3320, 0.3364



74.5158, 0.3148, 0.3445



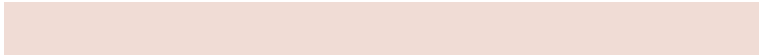
74.5158, 0.2938, 0.3212



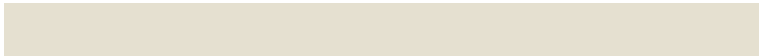
74.5158, 0.3104, 0.3141

Rectangle

The Rectangle color scheme consists of four colors that form a rectangle on the color wheel.



74.5158, 0.3320, 0.3364



74.5158, 0.3267, 0.3457



74.5158, 0.2938, 0.3212



74.5158, 0.2988, 0.3126

Sweetspot

The Sweet Spot groups the original color and five complimentary colors.



74.5191, 0.3320, 0.3364



95.9552, 0.3175, 0.3309



72.0111, 0.3186, 0.3081



20.3115, 0.3188, 0.3314



0.0000, 0.0000, 0.0000



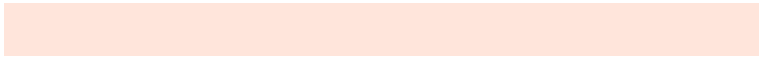
21.4041, 0.3127, 0.3290

Same Dimension

The Same Dimension uses a secret algorithm to generate beautiful new colors.



74.5191, 0.3320, 0.3364



82.1856, 0.3374, 0.3383



81.7561, 0.3303, 0.3500



16.4253, 0.3287, 0.3352



12.2241, 0.6056, 0.3574



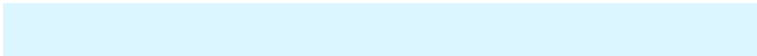
1.1727, 0.5800, 0.3777

Inverse Universe

The Inverse Universe completely reimagines the original color for something new.



78.7184, 0.2953, 0.3215



88.0803, 0.2910, 0.3195



71.4920, 0.2951, 0.3071



17.1945, 0.2981, 0.3227



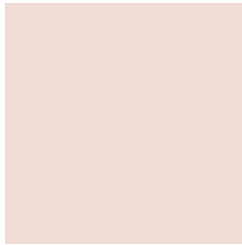
21.0462, 0.2007, 0.2427



1.9106, 0.2043, 0.2554

Previews

White Background



This preview shows how the Yxy color 74.5158, 0.3320, 0.3364 looks on a white background.

Color Contrast Check

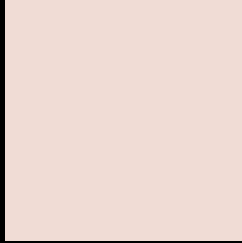
Large Text (above 18pt) WCAG AA × Fail

Any Text WCAG AA × Fail

Large Text (above 18pt) WCAG AAA × Fail

Any Text WCAG AAA × Fail

Black Background



This preview shows how the Yxy color 74.5158, 0.3320, 0.3364 looks on a black background.

Color Contrast Check

Large Text (above 18pt) WCAG AA ✓ Pass

Any Text WCAG AA ✓ Pass

Large Text (above 18pt) WCAG AAA ✓ Pass

Any Text WCAG AAA ✓ Pass

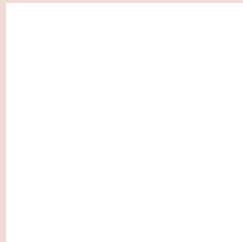
If you want to check with other color combinations, try the [Color Contrast Checker](#).

Yxy 74.5158, 0.3320, 0.3364

Background



This preview shows how black text looks on a background with the Yxy color 74.5158, 0.3320, 0.3364.

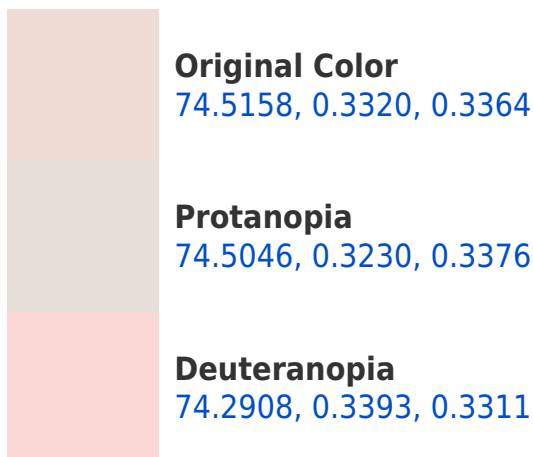


This preview shows how white text looks on a background with the Yxy color 74.5158, 0.3320, 0.3364.

Color Blindness Simulation

Color vision deficiency is a very complex topic, and I could not describe the different causes any better than Wikipedia does, so if you want to learn more, you should check out their [article about color blindness](#).

Dichromacy





Tritanopia

74.6209, 0.3200, 0.3116

Trichromacy



Original Color

74.5158, 0.3320, 0.3364

Protanomaly

74.5900, 0.3267, 0.3375

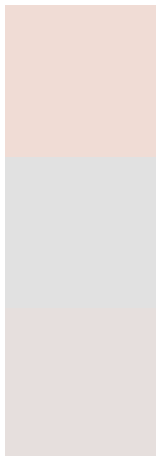
Deuteranomaly

74.0736, 0.3361, 0.3322

Tritanomaly

74.5110, 0.3247, 0.3208

Monochromacy



Original Color

74.5158, 0.3320, 0.3364

Achromatopsia

75.2942, 0.3127, 0.3290

Achromatomaly

74.8188, 0.3190, 0.3311

CSS Examples

Text

The CSS property to change the color of the text to Yxy 74.5158, 0.3320, 0.3364 is called "color". The color property can be set on classes, ids or directly on the HTML element.

This example shows how text in the color `rgb(240, 220, 213)` looks like.

```
.text, #text, p{  
    color:rgb(240, 220, 213)  
}
```

If you want to add a text shadow in that color use the text-shadow property, you can generate a text shadow directly with our [CSS Text Shadow Generator](#).

Here you see how black text with a 4 pixel rgb(240, 220, 213) colored shadow looks like.

```
.shadow{ text-shadow: 4px 4px 2px rgb(240, 220, 213) }
```

Border

The CSS property to change the border of an element to Yxy 74.5158, 0.3320, 0.3364 is called "border". The border property can be set on classes, ids or directly on the HTML element.

This example shows the color as border, it can be applied via the CSS property "border" or "border-color".

```
.border, #border, table{ border:4px solid rgb(240, 220, 213) }
```

If only the border color should be changed use the property `border-color`.

```
.border{ border-color:rgb(240, 220, 213) }
```

If you want to add a box shadow in that color use:

Here you see how a box with a 4 pixel `rgb(240, 220, 213)` colored shadow looks like.

```
.boxshadow{ -moz-box-shadow:4px 4px 4px  
4px rgb(240, 220, 213); -webkit-box-  
shadow:4px 4px 4px 4px rgb(240, 220, 213);  
box-shadow:4px 4px 4px 4px rgb(240, 220,  
213) }
```


Background

The CSS property to change the background color of an element to Yxy 74.5158, 0.3320, 0.3364 is called "background". The background property can be set on classes, ids or directly on the HTML element.

```
.background, #background, body{  
background: rgb(240, 220, 213) }
```

If only the background color should be changed can be used:

```
.background{ background-color: rgb(240,  
220, 213) }
```

This example shows the color as background, it is applied via the CSS property "background".

To optimize and compress your CSS code, you can use our [online CSS compressor and optimizer](#) based on csstidy. If you want to create a linear or radial gradient as background or border, check our [CSS Gradient Generator](#).

Hey! You found this booklet interesting? Support Converting Colors with the new Membership Option!

The pro membership hides all ads, plus gives you double the colors in the color bucket, and more awesome pro features!

[Learn more, Memberships starting at \\$2.50/m!](#)

**Follow me
on Twitter!**

@ConvertingColor