

Converting Colors

$Yxy(74.5877, 0.3267, 0.3287)$

Have a look what the booklet for
Yxy(74.5877, 0.3267, 0.3287)
contains.

Yxy(74.7044, 0.3264, 0.3290)	3
Conversions	4
Details	6
Harmonies	12
Previews	24
Color Blindness Simulation	27
CSS Examples	30

Color

Yxy(74.7044, 0.3264, 0.3290)

Conversions

Conversions Part 1

Format	Color
Hex	EFDCDC
RGB	239, 220, 220
RGB Percent	94%, 86%, 86%
CMY	0.0627, 0.1373, 0.1371
CMYK	0.00, 0.08, 0.08, 0.06
HSL	360°, 37%, 90%
HSV	360°, 8%, 94%
XYZ	74.1140, 74.7044, 78.2466
YIQ	225.6810, 11.3240, 4.0280

Conversions

Conversions Part 2

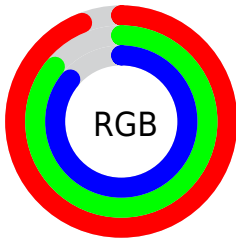
Format	Color
R _Y B	239, 220, 220
Decimal	15719644
CIE Lab	89.25, 6.53, 2.33
CIE LCh	89, 6.932, 19.645
Yxy	74.7044, 0.3264, 0.3290
Android (android.graphics.Color)	4293909724 (0xFFEFD CDC)
YUV	225.6810, -2.8007, 11.6808
Hunter-Lab	86.4317, 1.8059, 6.8270

Details

The Yxy color $74.7044, 0.3264, 0.3290$ is a light color, and the websafe version is hex `CCCCCC`. A complement of this color would be $83.1853, 0.3004, 0.3290$, and the grayscale version is $75.8295, 0.3127, 0.3290$.

A 20% lighter version of the original color is $100.0000, 0.3127, 0.3290$, and $39.6942, 0.3297, 0.3291$ is the 20% darker color. If you saturate the color by 10%, you get $61.8704, 0.3475, 0.3290$, and if you desaturate by 10%, it is $89.5189, 0.3096, 0.3290$.

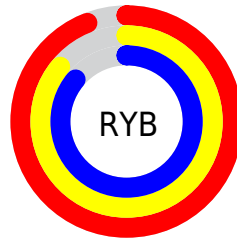
Distribution



Red (94%)

Green (86%)

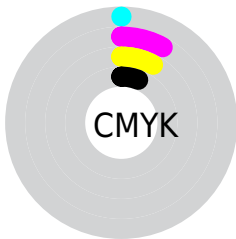
Blue (86%)



Red (94%)

Yellow (86%)

Blue (86%)

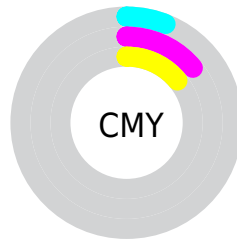


Cyan (0%)

Magenta (8%)

Yellow (8%)

Black (6%)



Cyan (6%)


Magenta (14%)

Yellow (14%)

Brightness & Saturation Gradients

These gradients show how the Yxy color 74.7044, 0.3264, 0.3290 changes by changing the brightness by 10 percent. The first figure shows a shift by +10% for each color and the second figure -10%.

Similar to the brightness gradients but the following saturation gradients show a change of the Yxy color 74.7044, 0.3264, 0.3290 by changing the saturation by 10% instead.


 74.7044, 0.3264,
0.3290

 74.7044, 0.3264,
0.3290

476.9009, 0.3201,
0.3290

 55.3708, 0.3278,
0.3290


125.8938, 0.3242,
0.3290

 39.6986, 0.3296,
0.3290

158.5184, 0.3234,
0.3290

 27.3037, 0.3319,
0.3289


196.3421, 0.3226,
0.3290

 17.8014, 0.3349,
0.3289


239.7493, 0.3220,
0.3290

 10.8075, 0.3389,
0.3288

289.1244, 0.3214,
0.3290

 5.9375, 0.3447,
0.3286

344.8518, 0.3209,

 2.8071, 0.3539,

0.3290

0.3282

407.3158, 0.3205,
0.3290

■ 1.0319, 0.3705,
0.3273

■ 0.0000, 1.0000,
0.0000

■ 74.7044, 0.3264,
0.3290

■ 74.7044, 0.3264,
0.3290

■ 61.8704, 0.3475,
0.3290

■ 89.5189, 0.3096,
0.3290

■ 50.9237, 0.3739,
0.3290

■ 97.0926, 0.3029,
0.3290

■ 41.7783, 0.4066,
0.3291

■ 34.3378, 0.4461,
0.3292

■ 28.4968, 0.4916,
0.3293

■ 24.1379, 0.5399,
0.3294

■ 21.1282, 0.5850,
0.3296

■ 19.3107, 0.6192,
0.3298

■ 18.4704, 0.6373,
0.3299

Harmonies

Analogous

The Analogous color harmony consists of three colors that are next to each other on the color wheel.



74.7044, 0.3201, 0.3220



74.7044, 0.3264, 0.3290



74.7044, 0.3290, 0.3361

Triad

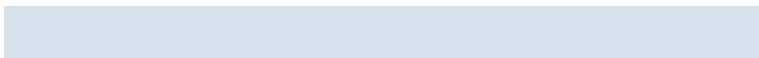
The Triadic color harmony groups three colors that are evenly spaced from another and form a triangle on the color wheel.



74.7044, 0.3264, 0.3290



74.7044, 0.3134, 0.3416



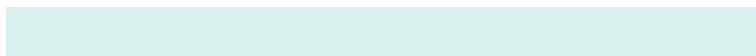
74.7044, 0.2984, 0.3166

Complementary

The Complementary color scheme is a pair of colors which are on the opposite of each other on the color wheel.



74.7044, 0.3264, 0.3290



83.1853, 0.3004, 0.3290

Split Complementary

Split-complementary colors differ from the complementary color scheme. The scheme consists of three colors, the original color and two neighbors of the complement color.



74.7044, 0.2967, 0.3216



74.7044, 0.3264, 0.3290



74.7044, 0.3053, 0.3362

Square

The Square scheme is like the rectangle color scheme, but the four colors are evenly spaced on the color wheel.



74.7044, 0.3264, 0.3290



74.7044, 0.3215, 0.3435



74.7044, 0.2992, 0.3288



74.7044, 0.3039, 0.3149

Rectangle

The Rectangle color scheme consists of four colors that form a rectangle on the color wheel.



74.7044, 0.3264, 0.3290



74.7044, 0.3283, 0.3399



74.7044, 0.2992, 0.3288



74.7044, 0.2974, 0.3179

Sweetspot

The Sweet Spot groups the original color and five complimentary colors.



74.7077, 0.3264, 0.3290



96.4655, 0.3159, 0.3290



75.7160, 0.3134, 0.3095



20.6846, 0.3158, 0.3290



0.0000, 0.0000, 0.0000



21.4041, 0.3127, 0.3290

Same Dimension

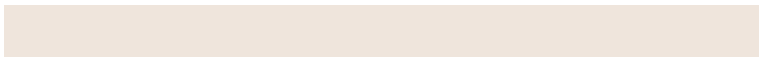
The Same Dimension uses a secret algorithm to generate beautiful new colors.



74.7077, 0.3264, 0.3290



83.2636, 0.3304, 0.3290



79.6626, 0.3255, 0.3386



15.7593, 0.3293, 0.3290



10.1418, 0.6399, 0.3299



0.8439, 0.6393, 0.3296

Inverse Universe

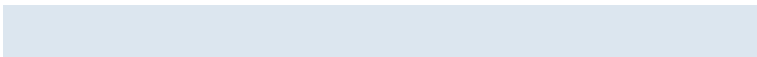
The Inverse Universe completely reimagines the original color for something new.



74.7077, 0.3264, 0.3290



83.2636, 0.3304, 0.3290



77.9426, 0.3004, 0.3193



15.7593, 0.3293, 0.3290



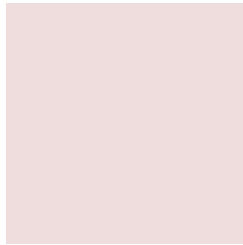
10.1418, 0.6399, 0.3299



0.8439, 0.6393, 0.3296

Previews

White Background



This preview shows how the Yxy color 74.7044, 0.3264, 0.3290 looks on a white background.

Color Contrast Check

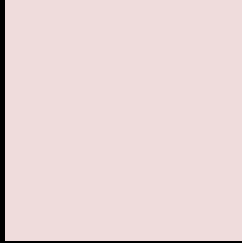
Large Text (above 18pt) WCAG AA × Fail

Any Text WCAG AA × Fail

Large Text (above 18pt) WCAG AAA × Fail

Any Text WCAG AAA × Fail

Black Background



This preview shows how the Yxy color 74.7044, 0.3264, 0.3290 looks on a black background.

Color Contrast Check

Large Text (above 18pt) WCAG AA ✓ Pass

Any Text WCAG AA ✓ Pass

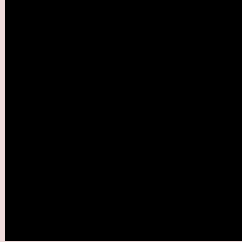
Large Text (above 18pt) WCAG AAA ✓ Pass

Any Text WCAG AAA ✓ Pass

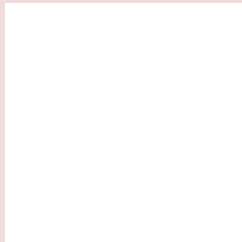
If you want to check with other color combinations, try the [Color Contrast Checker](#).

Yxy 74.7044, 0.3264, 0.3290

Background



This preview shows how black text looks on a background with the Yxy color 74.7044, 0.3264, 0.3290.



This preview shows how white text looks on a background with the Yxy color 74.7044, 0.3264, 0.3290.

Color Blindness Simulation

Color vision deficiency is a very complex topic, and I could not describe the different causes any better than Wikipedia does, so if you want to learn more, you should check out their [article about color blindness](#).

Dichromacy



Original Color

74.7044, 0.3264, 0.3290

Protanopia

74.7073, 0.3176, 0.3301

Deuteranopia

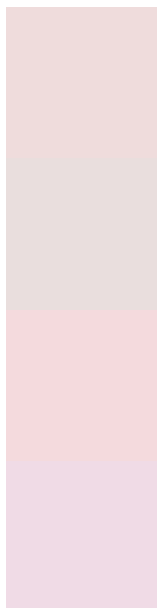
74.6203, 0.3319, 0.3250



Tritanopia

74.8417, 0.3178, 0.3116

Trichromacy



Original Color

74.7044, 0.3264, 0.3290

Protanomaly

74.7866, 0.3212, 0.3301

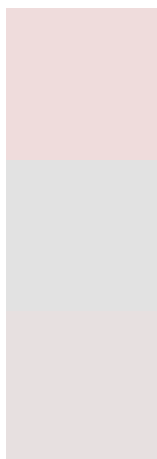
Deuteranomaly

74.5964, 0.3296, 0.3260

Tritanomaly

74.9015, 0.3204, 0.3177

Monochromacy



Original Color

74.7044, 0.3264, 0.3290

Achromatopsia

76.0525, 0.3127, 0.3290

Achromatomaly

75.6821, 0.3176, 0.3290

CSS Examples

Text

The CSS property to change the color of the text to Yxy 74.7044, 0.3264, 0.3290 is called "color". The color property can be set on classes, ids or directly on the HTML element.

This example shows how text in the color `rgb(239, 220, 220)` looks like.

```
.text, #text, p{  
    color:rgb(239, 220, 220)  
}
```

If you want to add a text shadow in that color use the text-shadow property, you can generate a text shadow directly with our [CSS Text Shadow Generator](#).

Here you see how black text with a 4 pixel rgb(239, 220, 220) colored shadow looks like.

```
.shadow{ text-shadow: 4px 4px 2px rgb(239, 220, 220) }
```

Border

The CSS property to change the border of an element to Yxy 74.7044, 0.3264, 0.3290 is called "border". The border property can be set on classes, ids or directly on the HTML element.

This example shows the color as border, it can be applied via the CSS property "border" or "border-color".

```
.border, #border, table{ border:4px solid rgb(239, 220, 220) }
```

If only the border color should be changed use the property border-color.

```
.border{ border-color:rgb(239, 220, 220) }
```

If you want to add a box shadow in that color use:

Here you see how a box with a 4 pixel rgb(239, 220, 220) colored shadow looks like.

```
.boxshadow{ -moz-box-shadow:4px 4px 4px  
4px rgb(239, 220, 220); -webkit-box-  
shadow:4px 4px 4px 4px rgb(239, 220, 220);  
box-shadow:4px 4px 4px 4px rgb(239, 220,  
220) }
```


Background

The CSS property to change the background color of an element to Yxy 74.7044, 0.3264, 0.3290 is called "background". The background property can be set on classes, ids or directly on the HTML element.

```
.background, #background, body{  
background: rgb(239, 220, 220) }
```

If only the background color should be changed can be used:

```
.background{ background-color: rgb(239,  
220, 220) }
```

This example shows the color as background, it is applied via the CSS property "background".

To optimize and compress your CSS code, you can use our [online CSS compressor and optimizer](#) based on csstidy. If you want to create a linear or radial gradient as background or border, check our [CSS Gradient Generator](#).

Hey! You found this booklet interesting? Support Converting Colors with the new Membership Option!

The pro membership hides all ads, plus gives you double the colors in the color bucket, and more awesome pro features!

[Learn more, Memberships starting at \\$2.50/m!](#)

**Follow me
on Twitter!**

@ConvertingColor