

Converting Colors

$Yxy(74.6180, 0.3306, 0.3343)$

Have a look what the booklet for
Yxy(74.6180, 0.3306, 0.3343)
contains.

| | |
|---|----|
| Yxy(74.6180, 0.3306, 0.3343) | 3 |
| Conversions | 4 |
| Details | 6 |
| Harmonies | 12 |
| Previews | 24 |
| Color Blindness Simulation | 27 |
| CSS Examples | 30 |

Color

Yxy(74.6180, 0.3306, 0.3343)

Conversions

Conversions Part 1

| Format | Color |
|-------------|---------------------------|
| Hex | F0DCD7 |
| RGB | 240, 220, 215 |
| RGB Percent | 94%, 86%, 84% |
| CMY | 0.0588, 0.1372, 0.1569 |
| CMYK | 0.00, 0.08, 0.10, 0.06 |
| HSL | 12°, 45%, 89% |
| HSV | 12°, 10%, 94% |
| XYZ | 73.7921, 74.6180, 74.7966 |
| YIQ | 225.4100, 13.5250, 2.6850 |

Conversions

Conversions Part 2

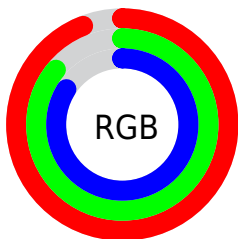
| Format | Color |
|-------------------------------------|-------------------------------|
| R _Y B | 240, 221, 215 |
| Decimal | 15785175 |
| CIE Lab | 89.21, 6.04, 4.93 |
| CIE LCh | 89, 7.796, 39.256 |
| Yxy | 74.6180, 0.3306, 0.3343 |
| Android (android.graphics.Color) | 4293975255 (0xFFF0DCD7) |
| YUV | 225.4100, -5.1321, 12.7954 |
| Hunter-Lab | 86.3817, 1.3168, 9.1289 |

Details

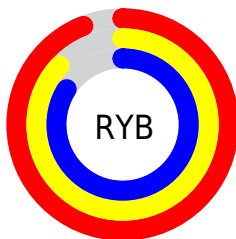
The Yxy color **74.6180, 0.3306, 0.3343** is a light color, and the websafe version is hex **CCCCCC**. A complement of this color would be **80.1424, 0.2966, 0.3236**, and the grayscale version is **75.6372, 0.3127, 0.3290**.

A 20% lighter version of the original color is **100.0000, 0.3127, 0.3290**, and **39.6387, 0.3352, 0.3358** is the 20% darker color. If you saturate the color by 10%, you get **63.9769, 0.3515, 0.3398**, and if you desaturate by 10%, it is **86.6023, 0.3134, 0.3292**.

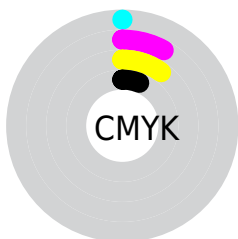
Distribution



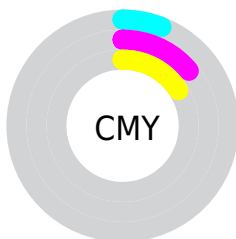
- Red (94%)
- Green (86%)
- Blue (84%)



- Red (94%)
- Yellow (87%)
- Blue (84%)



- Cyan (0%)
- Magenta (8%)
- Yellow (10%)
- Black (6%)





- Cyan (6%)
- Magenta (14%)
- Yellow (16%)

Brightness & Saturation Gradients

These gradients show how the Yxy color 74.6180, 0.3306, 0.3343 changes by changing the brightness by 10 percent. The first figure shows a shift by +10% for each color and the second figure -10%.

Similar to the brightness gradients but the following saturation gradients show a change of the Yxy color 74.6180, 0.3306, 0.3343 by changing the saturation by 10% instead.

 74.6180, 0.3306,
0.3343

 74.6180, 0.3306,
0.3343


476.6036, 0.3223,
0.3319

 55.3000, 0.3325,
0.3348


125.7715, 0.3277,
0.3335

 39.6420, 0.3348,
0.3355

158.3757, 0.3266,
0.3332

 27.2595, 0.3378,
0.3363


196.1776, 0.3256,
0.3329

 17.7682, 0.3417,
0.3373

239.5613, 0.3248,
0.3327

 10.7837, 0.3470,
0.3387

288.9114, 0.3241,
0.3324

 5.9216, 0.3547,
0.3405

344.6122, 0.3234,

 2.7975, 0.3668,

0.3322

0.3433

407.0481, 0.3228,
0.3321

■ 1.0269, 0.3904,
0.3492

■ 0.0000, 1.0000,
0.0000

■ 74.6180, 0.3306,
0.3343

■ 74.6180, 0.3306,
0.3343

■ 63.9769, 0.3515,
0.3398

■ 86.6023, 0.3134,
0.3292

■ 54.6225, 0.3766,
0.3454

■ 97.2648, 0.3035,
0.3290

■ 46.5085, 0.4067,
0.3510

■ 39.5822, 0.4417,
0.3559

■ 33.7872, 0.4812,
0.3596

■ 29.0622, 0.5230,
0.3609

■ 25.3400, 0.5632,
0.3590

■ 22.5452, 0.5970,
0.3535

■ 20.6509, 0.6199,
0.3460

Harmonies

Analogous

The Analogous color harmony consists of three colors that are next to each other on the color wheel.



74.6180, 0.3260, 0.3261



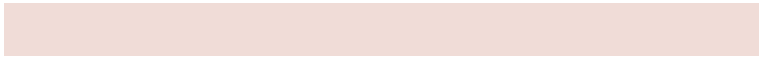
74.6180, 0.3306, 0.3343



74.6180, 0.3303, 0.3412

Triad

The Triadic color harmony groups three colors that are evenly spaced from another and form a triangle on the color wheel.



74.6180, 0.3306, 0.3343



74.6180, 0.3074, 0.3395



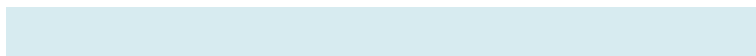
74.6180, 0.3003, 0.3133

Complementary

The Complementary color scheme is a pair of colors which are on the opposite of each other on the color wheel.



74.6180, 0.3306, 0.3343



80.1424, 0.2966, 0.3236

Split Complementary

Split-complementary colors differ from the complementary color scheme. The scheme consists of three colors, the original color and two neighbors of the complement color.



74.6180, 0.2954, 0.3166



74.6180, 0.3306, 0.3343



74.6180, 0.2995, 0.3317

Square

The Square scheme is like the rectangle color scheme, but the four colors are evenly spaced on the color wheel.



74.6180, 0.3306, 0.3343



74.6180, 0.3168, 0.3444



74.6180, 0.2952, 0.3233



74.6180, 0.3085, 0.3142

Rectangle

The Rectangle color scheme consists of four colors that form a rectangle on the color wheel.



74.6180, 0.3306, 0.3343



74.6180, 0.3273, 0.3442



74.6180, 0.2952, 0.3233



74.6180, 0.2982, 0.3140

Sweetspot

The Sweet Spot groups the original color and five complimentary colors.



74.6213, 0.3306, 0.3343



95.6772, 0.3175, 0.3305



73.1192, 0.3173, 0.3084



20.2367, 0.3189, 0.3309



0.0000, 0.0000, 0.0000



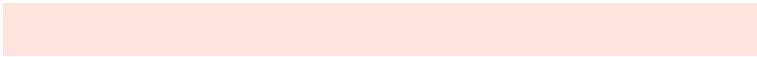
21.4041, 0.3127, 0.3290

Same Dimension

The Same Dimension uses a secret algorithm to generate beautiful new colors.



74.6213, 0.3306, 0.3343



82.2885, 0.3357, 0.3357



81.4232, 0.3291, 0.3471



16.2723, 0.3288, 0.3338



11.4539, 0.6175, 0.3479



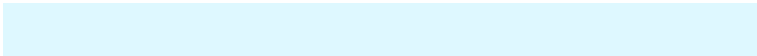
1.0889, 0.5932, 0.3672

Inverse Universe

The Inverse Universe completely reimagines the original color for something new.



80.1424, 0.2966, 0.3236



90.0758, 0.2926, 0.3222



73.2418, 0.2965, 0.3102



17.3588, 0.2981, 0.3241



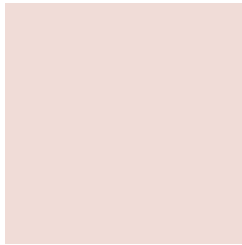
24.2386, 0.2065, 0.2633



2.1515, 0.2092, 0.2729

Previews

White Background



This preview shows how the Yxy color 74.6180, 0.3306, 0.3343 looks on a white background.

Color Contrast Check

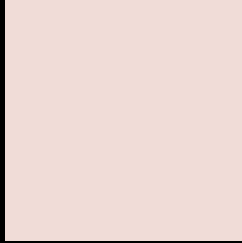
Large Text (above 18pt) WCAG AA × Fail

Any Text WCAG AA × Fail

Large Text (above 18pt) WCAG AAA × Fail

Any Text WCAG AAA × Fail

Black Background



This preview shows how the Yxy color 74.6180, 0.3306, 0.3343 looks on a black background.

Color Contrast Check

Large Text (above 18pt) WCAG AA ✓ Pass

Any Text WCAG AA ✓ Pass

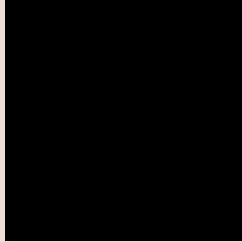
Large Text (above 18pt) WCAG AAA ✓ Pass

Any Text WCAG AAA ✓ Pass

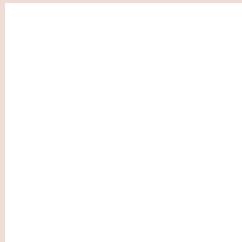
If you want to check with other color combinations, try the [Color Contrast Checker](#).

Yxy 74.6180, 0.3306, 0.3343

Background



This preview shows how black text looks on a background with the Yxy color 74.6180, 0.3306, 0.3343.

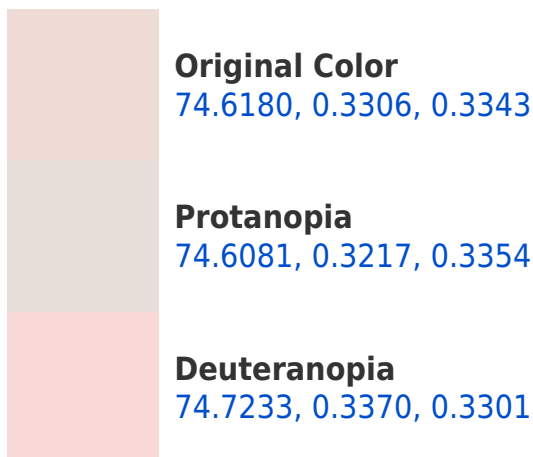


This preview shows how white text looks on a background with the Yxy color 74.6180, 0.3306, 0.3343.

Color Blindness Simulation

Color vision deficiency is a very complex topic, and I could not describe the different causes any better than Wikipedia does, so if you want to learn more, you should check out their [article about color blindness](#).

Dichromacy

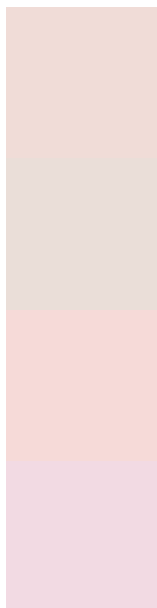




Tritanopia

74.6209, 0.3200, 0.3116

Trichromacy



Original Color

74.6180, 0.3306, 0.3343

Protanomaly

74.6928, 0.3253, 0.3354

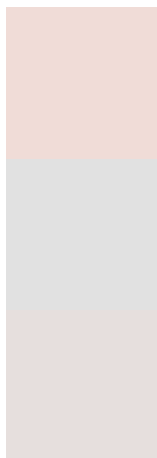
Deuteranomaly

74.6935, 0.3346, 0.3311

Tritanomaly

74.5661, 0.3240, 0.3197

Monochromacy



Original Color

74.6180, 0.3306, 0.3343

Achromatopsia

75.2942, 0.3127, 0.3290

Achromatomaly

74.8188, 0.3190, 0.3311

CSS Examples

Text

The CSS property to change the color of the text to Yxy 74.6180, 0.3306, 0.3343 is called "color". The color property can be set on classes, ids or directly on the HTML element.

This example shows how text in the color `rgb(240, 220, 215)` looks like.

```
.text, #text, p{  
    color:rgb(240, 220, 215)  
}
```

If you want to add a text shadow in that color use the text-shadow property, you can generate a text shadow directly with our [CSS Text Shadow Generator](#).

Here you see how black text with a 4 pixel rgb(240, 220, 215) colored shadow looks like.

```
.shadow{ text-shadow: 4px 4px 2px rgb(240, 220, 215) }
```

Border

The CSS property to change the border of an element to Yxy 74.6180, 0.3306, 0.3343 is called "border". The border property can be set on classes, ids or directly on the HTML element.

This example shows the color as border, it can be applied via the CSS property "border" or "border-color".

```
.border, #border, table{ border:4px solid rgb(240, 220, 215) }
```

If only the border color should be changed use the property `border-color`.

```
.border{ border-color:rgb(240, 220, 215) }
```

If you want to add a box shadow in that color use:

Here you see how a box with a 4 pixel `rgb(240, 220, 215)` colored shadow looks like.

```
.boxshadow{ -moz-box-shadow:4px 4px 4px  
4px rgb(240, 220, 215); -webkit-box-  
shadow:4px 4px 4px 4px rgb(240, 220, 215);  
box-shadow:4px 4px 4px 4px rgb(240, 220,  
215) }
```


Background

The CSS property to change the background color of an element to Yxy 74.6180, 0.3306, 0.3343 is called "background". The background property can be set on classes, ids or directly on the HTML element.

```
.background, #background, body{  
background: rgb(240, 220, 215) }
```

If only the background color should be changed can be used:

```
.background{ background-color: rgb(240,  
220, 215) }
```

This example shows the color as background, it is applied via the CSS property "background".

To optimize and compress your CSS code, you can use our [online CSS compressor and optimizer](#) based on csstidy. If you want to create a linear or radial gradient as background or border, check our [CSS Gradient Generator](#).

Hey! You found this booklet interesting? Support Converting Colors with the new Membership Option!

The pro membership hides all ads, plus gives you double the colors in the color bucket, and more awesome pro features!

[Learn more, Memberships starting at \\$2.50/m!](#)

**Follow me
on Twitter!**

@ConvertingColor