

# Converting Colors

$Y_{xy}(74.7059, 0.3287, 0.3303)$

Have a look what the booklet for  
Yxy(74.7059, 0.3287, 0.3303)  
contains.

<b>Yxy(74.9491, 0.3293, 0.3311)</b> .....	3
<b>Conversions</b> .....	4
<b>Details</b> .....	6
<b>Harmonies</b> .....	12
<b>Previews</b> .....	24
<b>Color Blindness Simulation</b> .....	27
<b>CSS Examples</b> .....	30

# Color

**Yxy(74.9491, 0.3293, 0.3311)**

# Conversions

## Conversions Part 1

Format	Color
Hex	F1DCDA
RGB	241, 220, 218
RGB Percent	95%, 86%, 85%
CMY	0.0546, 0.1373, 0.1451
CMYK	0.00, 0.09, 0.10, 0.05
HSL	5°, 45%, 90%
HSV	5°, 10%, 95%
XYZ	74.5416, 74.9491, 76.8732
YIQ	226.0510, 13.1580, 3.8300

# Conversions

## Conversions Part 2

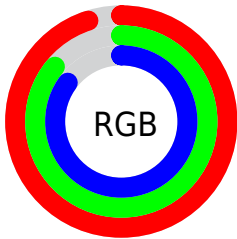
Format	Color
R <sub>Y</sub> B	241, 220, 218
Decimal	15850714
CIE Lab	89.37, 6.92, 3.58
CIE LCh	89, 7.790, 27.382
Yxy	74.9491, 0.3293, 0.3311
Android (android.graphics.Color)	4294040794 (0xFFF1DCDA)
YUV	226.0510, -3.9691, 13.1103
Hunter-Lab	86.5731, 2.1900, 7.9543

# Details

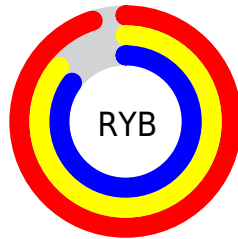
The Yxy color **74.9491, 0.3293, 0.3311** is a light color, and the websafe version is hex **CCCCCC**. A complement of this color would be **83.0511, 0.2980, 0.3269**, and the grayscale version is **76.1218, 0.3127, 0.3290**.

A 20% lighter version of the original color is **100.0000, 0.3127, 0.3290**, and **39.8689, 0.3335, 0.3318** is the 20% darker color. If you saturate the color by 10%, you get **62.9631, 0.3506, 0.3335**, and if you desaturate by 10%, it is **88.6510, 0.3120, 0.3289**.

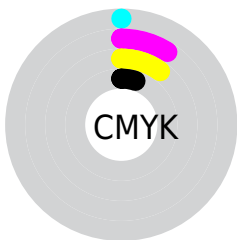
# Distribution



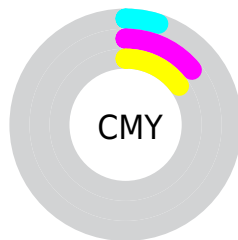
- Red (95%)
- Green (86%)
- Blue (85%)



- Red (95%)
- Yellow (86%)
- Blue (85%)



- Cyan (0%)
- Magenta (9%)
- Yellow (10%)
- Black (5%)




- Cyan (5%)
- Magenta (14%)
- Yellow (15%)


# Brightness & Saturation Gradients

These gradients show how the Yxy color 74.9491, 0.3293, 0.3311 changes by changing the brightness by 10 percent. The first figure shows a shift by +10% for each color and the second figure -10%.


Similar to the brightness gradients but the following saturation gradients show a change of the Yxy color 74.9491, 0.3293, 0.3311 by changing the saturation by 10% instead.




 74.9491, 0.3293,  
0.3311

 74.9491, 0.3293,  
0.3311


477.7426, 0.3216,  
0.3302

 55.5712, 0.3311,  
0.3313


126.2403, 0.3266,  
0.3308

 39.8592, 0.3332,  
0.3315


158.9224, 0.3256,  
0.3307

 27.4288, 0.3360,  
0.3318


196.8080, 0.3247,  
0.3306

 17.8955, 0.3396,  
0.3322

240.2815, 0.3239,  
0.3305

 10.8750, 0.3445,  
0.3326

289.7273, 0.3233,  
0.3304

 5.9828, 0.3515,  
0.3332

345.5299, 0.3227,

 2.8347, 0.3627,

0.3303

408.0735, 0.3221,  
0.3303

0.3340

1.0460, 0.3830,  
0.3353

0.0000, 1.0000,  
0.0000

74.9491, 0.3293,  
0.3311

74.9491, 0.3293,  
0.3311

62.9631, 0.3506,  
0.3335

88.6510, 0.3120,  
0.3289

52.6161, 0.3769,  
0.3359

97.4528, 0.3042,  
0.3290

43.8396, 0.4090,  
0.3383

36.5569, 0.4472,  
0.3405

■ 30.6847, 0.4906,  
0.3419

■ 26.1314, 0.5366,  
0.3422

■ 22.7947, 0.5800,  
0.3409

■ 20.5572, 0.6140,  
0.3378

■ 19.2730, 0.6343,  
0.3341

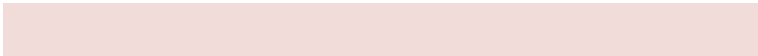
# Harmonies

## Analogous

The Analogous color harmony consists of three colors that are next to each other on the color wheel.



74.9491, 0.3231, 0.3231



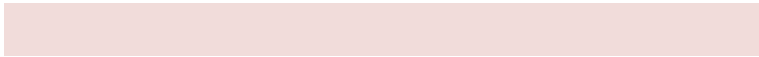
74.9491, 0.3293, 0.3311



74.9491, 0.3310, 0.3387

# Triad

The Triadic color harmony groups three colors that are evenly spaced from another and form a triangle on the color wheel.



74.9491, 0.3293, 0.3311



74.9491, 0.3111, 0.3419



74.9491, 0.2979, 0.3142

# Complementary

The Complementary color scheme is a pair of colors which are on the opposite of each other on the color wheel.



74.9491, 0.3293, 0.3311



83.0511, 0.2980, 0.3269

# Split Complementary

Split-complementary colors differ from the complementary color scheme. The scheme consists of three colors, the original color and two neighbors of the complement color.



74.9491, 0.2948, 0.3189



74.9491, 0.3293, 0.3311



74.9491, 0.3023, 0.3350

# Square

The Square scheme is like the rectangle color scheme, but the four colors are evenly spaced on the color wheel.



74.9491, 0.3293, 0.3311



74.9491, 0.3204, 0.3452



74.9491, 0.2964, 0.3266



74.9491, 0.3050, 0.3134



# Rectangle

The Rectangle color scheme consists of four colors that form a rectangle on the color wheel.



74.9491, 0.3293, 0.3311



74.9491, 0.3293, 0.3426



74.9491, 0.2964, 0.3266



74.9491, 0.2964, 0.3153

# Sweetspot

The Sweet Spot groups the original color and five complimentary colors.



74.9524, 0.3293, 0.3311



95.1345, 0.3176, 0.3296



75.1014, 0.3151, 0.3074



20.0909, 0.3189, 0.3298



0.0000, 0.0000, 0.0000



21.4041, 0.3127, 0.3290

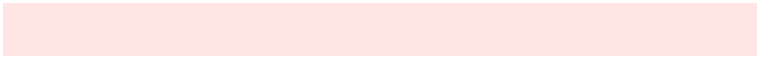


# Same Dimension

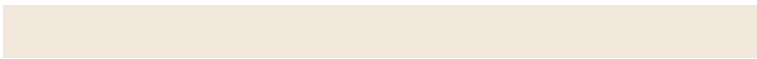
The Same Dimension uses a secret algorithm to generate beautiful new colors.



74.9524, 0.3293, 0.3311



83.0355, 0.3322, 0.3314



81.1854, 0.3280, 0.3429



15.9761, 0.3291, 0.3311



10.5029, 0.6335, 0.3352



0.9478, 0.6184, 0.3471

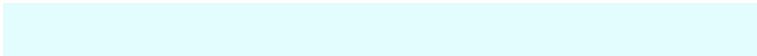


# Inverse Universe

The Inverse Universe completely reimagines the original color for something new.



83.0511, 0.2980, 0.3269



93.5414, 0.2957, 0.3266



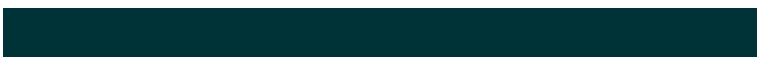
76.5385, 0.2979, 0.3147



17.6841, 0.2981, 0.3269



31.4103, 0.2172, 0.3020

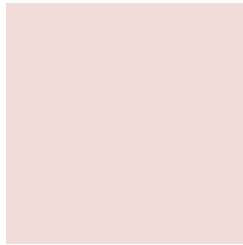


2.6806, 0.2183, 0.3058



# Previews

## White Background



This preview shows how the Yxy color 74.9491, 0.3293, 0.3311 looks on a white background.

## Color Contrast Check

Large Text (above 18pt) WCAG AA × Fail

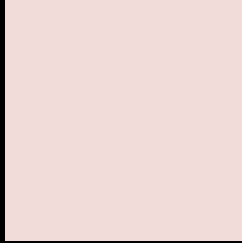
Any Text WCAG AA × Fail

Large Text (above 18pt) WCAG AAA × Fail

Any Text WCAG AAA × Fail



# Black Background



This preview shows how the Yxy color 74.9491, 0.3293, 0.3311 looks on a black background.

## Color Contrast Check

Large Text (above 18pt) WCAG AA ✓ Pass

Any Text WCAG AA ✓ Pass

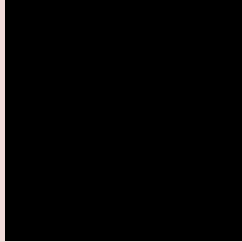
Large Text (above 18pt) WCAG AAA ✓ Pass

Any Text WCAG AAA ✓ Pass

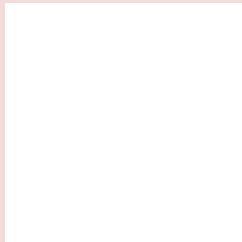
If you want to check with other color combinations, try the [Color Contrast Checker](#).

**Yxy 74.9491, 0.3293, 0.3311**

## **Background**



This preview shows how black text looks on a background with the Yxy color 74.9491, 0.3293, 0.3311.

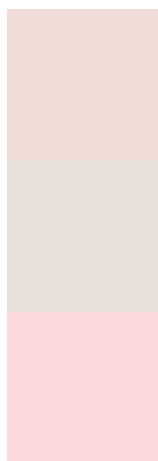


This preview shows how white text looks on a background with the Yxy color 74.9491, 0.3293, 0.3311.

# Color Blindness Simulation

Color vision deficiency is a very complex topic, and I could not describe the different causes any better than Wikipedia does, so if you want to learn more, you should check out their [article about color blindness](#).

## Dichromacy



### Original Color

74.9491, 0.3293, 0.3311

### Protanopia

75.3016, 0.3196, 0.3333

### Deuteranopia

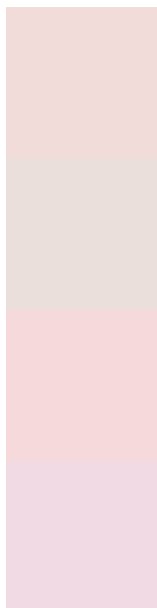
74.8799, 0.3348, 0.3270



## Tritanopia

74.6209, 0.3200, 0.3116

# Trichromacy



## Original Color

74.9491, 0.3293, 0.3311

## Protanomaly

75.3823, 0.3232, 0.3333

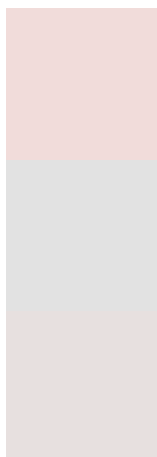
## Deuteranomaly

74.8501, 0.3325, 0.3280

## Tritanomaly

74.6215, 0.3233, 0.3187

# Monochromacy



## Original Color

74.9491, 0.3293, 0.3311

## Achromatopsia

76.0525, 0.3127, 0.3290

## Achromatomaly

75.6279, 0.3183, 0.3301

# CSS Examples

## Text

The CSS property to change the color of the text to Yxy 74.9491, 0.3293, 0.3311 is called "color". The color property can be set on classes, ids or directly on the HTML element.

This example shows how text in the color `rgb(241, 220, 218)` looks like.

```
.text, #text, p{  
    color:rgb(241, 220, 218)  
}
```

If you want to add a text shadow in that color use the text-shadow property, you can generate a text shadow directly with our [CSS Text Shadow Generator](#).

Here you see how black text with a 4 pixel rgb(241, 220, 218) colored shadow looks like.

```
.shadow{ text-shadow: 4px 4px 2px rgb(241, 220, 218) }
```

## Border

The CSS property to change the border of an element to Yxy 74.9491, 0.3293, 0.3311 is called "border". The border property can be set on classes, ids or directly on the HTML element.

This example shows the color as border, it can be applied via the CSS property "border" or "border-color".

```
.border, #border, table{ border:4px solid rgb(241, 220, 218) }
```

If only the border color should be changed use the property border-color.

```
.border{ border-color:rgb(241, 220, 218) }
```

If you want to add a box shadow in that color use:

Here you see how a box with a 4 pixel rgb(241, 220, 218) colored shadow looks like.

```
.boxshadow{ -moz-box-shadow:4px 4px 4px  
4px rgb(241, 220, 218); -webkit-box-  
shadow:4px 4px 4px 4px rgb(241, 220, 218);  
box-shadow:4px 4px 4px 4px rgb(241, 220,  
218) }
```



# Background

The CSS property to change the background color of an element to Yxy 74.9491, 0.3293, 0.3311 is called "background". The background property can be set on classes, ids or directly on the HTML element.

```
.background, #background, body{  
background: rgb(241, 220, 218) }
```

If only the background color should be changed can be used:

```
.background{ background-color: rgb(241,  
220, 218) }
```

This example shows the color as background, it is applied via the CSS property "background".

To optimize and compress your CSS code, you can use our [online CSS compressor and optimizer](#) based on csstidy. If you want to create a linear or radial gradient as background or border, check our [CSS Gradient Generator](#).

Hey! You found this booklet interesting? Support Converting Colors with the new Membership Option!

The pro membership hides all ads, plus gives you double the colors in the color bucket, and more awesome pro features!

**[Learn more, Memberships starting at \\$2.50/m!](#)**

**Follow me  
on Twitter!**

@ConvertingColor