

Converting Colors

$Y_{xy}(75.2516, 0.3212, 0.3221)$

Have a look what the booklet for
Yxy(75.2516, 0.3212, 0.3221)
contains.

Yxy(75.0832, 0.3216, 0.3218)	3
<i>Conversions</i>	4
<i>Details</i>	6
<i>Harmonies</i>	12
<i>Previews</i>	24
<i>Color Blindness Simulation</i>	27
<i>CSS Examples</i>	30

Color

Yxy(75.0832, 0.3216, 0.3218)

Conversions

Conversions Part 1

Format	Color
Hex	EFDCE3
RGB	239, 220, 227
RGB Percent	94%, 86%, 89%
CMY	0.0630, 0.1371, 0.1098
CMYK	0.00, 0.08, 0.05, 0.06
HSL	338°, 37%, 90%
HSV	338°, 8%, 94%
XYZ	75.0365, 75.0832, 83.2028
YIQ	226.4790, 9.0770, 6.2050

Conversions

Conversions Part 2

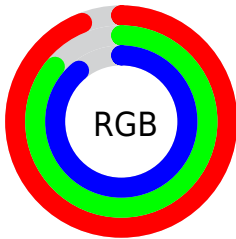
Format	Color
R _Y B	239, 220, 227
Decimal	15719651
CIE Lab	89.43, 7.66, -1.07
CIE LCh	89, 7.739, 352.065
Yxy	75.0832, 0.3216, 0.3218
Android (android.graphics.Color)	4293909731 (0xFFEFDCE3)
YUV	226.4790, 0.2569, 10.9809
Hunter-Lab	86.6506, 2.9366, 3.7245

Details

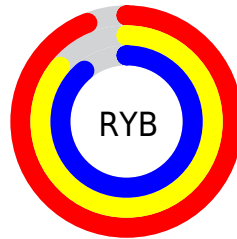
The Yxy color **75.0832, 0.3216, 0.3218** is a light color, and the websafe version is hex **CCCCCC**. A complement of this color would be **82.7384, 0.3046, 0.3363**, and the grayscale version is **76.4075, 0.3127, 0.3290**.

A 20% lighter version of the original color is **100.0000, 0.3127, 0.3290**, and **39.9561, 0.3234, 0.3197** is the 20% darker color. If you saturate the color by 10%, you get **62.6286, 0.3351, 0.3122**, and if you desaturate by 10%, it is **89.4099, 0.3106, 0.3308**.

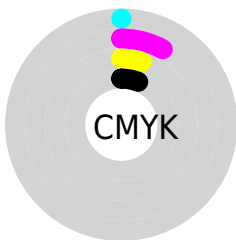
Distribution



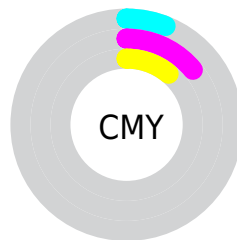
- Red (94%)
- Green (86%)
- Blue (89%)



- Red (94%)
- Yellow (86%)
- Blue (89%)



- Cyan (0%)
- Magenta (8%)
- Yellow (5%)
- Black (6%)




- Cyan (6%)
- Magenta (14%)
- Yellow (11%)

Brightness & Saturation Gradients


These gradients show how the Yxy color 75.0832, 0.3216, 0.3218 changes by changing the brightness by 10 percent. The first figure shows a shift by +10% for each color and the second figure -10%.

Similar to the brightness gradients but the following saturation gradients show a change of the Yxy color 75.0832, 0.3216, 0.3218 by changing the saturation by 10% instead.

 75.0832, 0.3216,
0.3218

 75.0832, 0.3216,
0.3218


478.2035, 0.3175,
0.3251

 55.6811, 0.3225,
0.3211

126.4301, 0.3202,
0.3229

 39.9473, 0.3237,
0.3201


159.1437, 0.3196,
0.3234

 27.4974, 0.3251,
0.3190

197.0632, 0.3192,
0.3238

 17.9472, 0.3270,
0.3174

240.5730, 0.3188,
0.3241

 10.9121, 0.3296,
0.3154

290.0576, 0.3184,
0.3244

 6.0077, 0.3332,
0.3125

345.9012, 0.3181,

 2.8498, 0.3390,

0.3247

0.3079

408.4884, 0.3178,
0.3249

■ 1.0538, 0.3491,
0.2999

■ 0.0000, 0.9534,
0.0000

■ 75.0832, 0.3216,
0.3218

■ 75.0832, 0.3216,
0.3218

■ 62.6286, 0.3351,
0.3122

■ 89.4099, 0.3106,
0.3308

■ 51.9588, 0.3515,
0.3022

■ 97.0790, 0.3029,
0.3290

■ 42.9940, 0.3713,
0.2922

■ 35.6447, 0.3949,
0.2828

■ 29.8130, 0.4224,
0.2749

■ 25.3903, 0.4532,
0.2696

■ 22.2534, 0.4861,
0.2683

■ 20.2575, 0.5188,
0.2721

■ 19.2051, 0.5487,
0.2808

Harmonies

Analogous

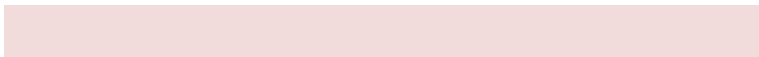
The Analogous color harmony consists of three colors that are next to each other on the color wheel.



75.0832, 0.3125, 0.3159



75.0832, 0.3216, 0.3218



75.0832, 0.3284, 0.3296

Triad

The Triadic color harmony groups three colors that are evenly spaced from another and form a triangle on the color wheel.



75.0832, 0.3216, 0.3218



75.0832, 0.3218, 0.3451



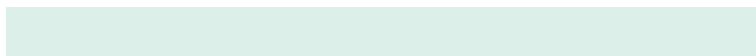
75.0832, 0.2949, 0.3202

Complementary

The Complementary color scheme is a pair of colors which are on the opposite of each other on the color wheel.



75.0832, 0.3216, 0.3218



82.7384, 0.3046, 0.3363

Split Complementary

Split-complementary colors differ from the complementary color scheme. The scheme consists of three colors, the original color and two neighbors of the complement color.



75.0832, 0.2973, 0.3281



75.0832, 0.3216, 0.3218



75.0832, 0.3128, 0.3427

Square

The Square scheme is like the rectangle color scheme, but the four colors are evenly spaced on the color wheel.



75.0832, 0.3216, 0.3218



75.0832, 0.3285, 0.3432



75.0832, 0.3038, 0.3364



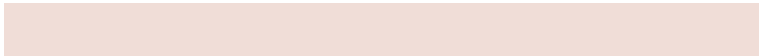
75.0832, 0.2971, 0.3148

Rectangle

The Rectangle color scheme consists of four colors that form a rectangle on the color wheel.



75.0832, 0.3216, 0.3218



75.0832, 0.3306, 0.3350



75.0832, 0.3038, 0.3364



75.0832, 0.2952, 0.3226

Sweetspot

The Sweet Spot groups the original color and five complimentary colors.



75.0865, 0.3216, 0.3218



96.5833, 0.3148, 0.3272



74.5333, 0.3086, 0.3093



20.7086, 0.3147, 0.3273



0.0000, 0.0000, 0.0000



21.4041, 0.3127, 0.3290

Same Dimension

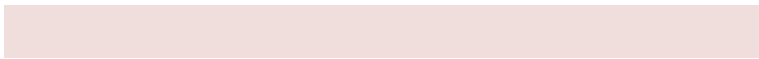
The Same Dimension uses a secret algorithm to generate beautiful new colors.



75.0865, 0.3216, 0.3218



85.3225, 0.3230, 0.3208



75.8753, 0.3261, 0.3313



15.8551, 0.3235, 0.3203



10.5536, 0.5505, 0.2806



0.8965, 0.5144, 0.2608

Inverse Universe

The Inverse Universe completely reimagines the original color for something new.



75.0865, 0.3216, 0.3218



85.3225, 0.3230, 0.3208



81.8588, 0.3005, 0.3267



15.8551, 0.3235, 0.3203



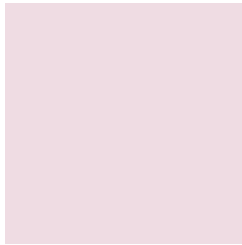
10.5536, 0.5505, 0.2806



0.8965, 0.5144, 0.2608

Previews

White Background



This preview shows how the Yxy color 75.0832, 0.3216, 0.3218 looks on a white background.

Color Contrast Check

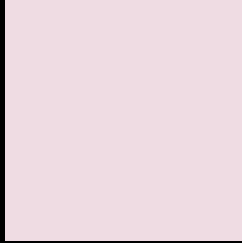
Large Text (above 18pt) WCAG AA × Fail

Any Text WCAG AA × Fail

Large Text (above 18pt) WCAG AAA × Fail

Any Text WCAG AAA × Fail

Black Background



This preview shows how the Yxy color 75.0832, 0.3216, 0.3218 looks on a black background.

Color Contrast Check

Large Text (above 18pt) WCAG AA ✓ Pass

Any Text WCAG AA ✓ Pass

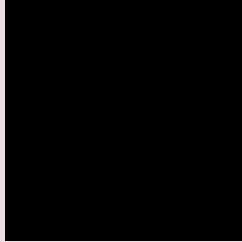
Large Text (above 18pt) WCAG AAA ✓ Pass

Any Text WCAG AAA ✓ Pass

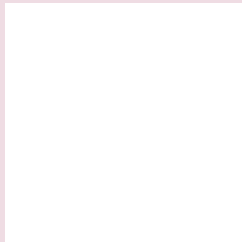
If you want to check with other color combinations, try the [Color Contrast Checker](#).

Yxy 75.0832, 0.3216, 0.3218

Background



This preview shows how black text looks on a background with the Yxy color 75.0832, 0.3216, 0.3218.

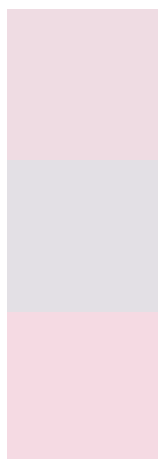


This preview shows how white text looks on a background with the Yxy color 75.0832, 0.3216, 0.3218.

Color Blindness Simulation

Color vision deficiency is a very complex topic, and I could not describe the different causes any better than Wikipedia does, so if you want to learn more, you should check out their [article about color blindness](#).

Dichromacy



Original Color

75.0832, 0.3216, 0.3218

Protanopia

75.2993, 0.3116, 0.3237

Deuteranopia

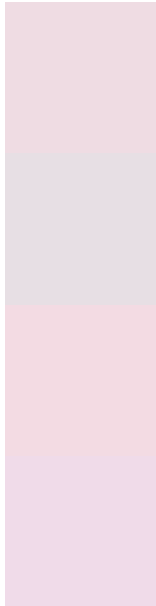
75.1013, 0.3262, 0.3198



Tritanopia

75.2444, 0.3164, 0.3116

Trichromacy



Original Color

75.0832, 0.3216, 0.3218

Protanomaly

75.3657, 0.3151, 0.3237

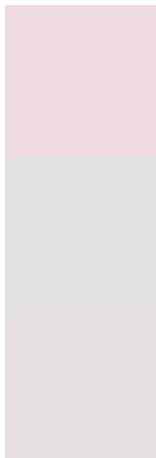
Deuteranomaly

75.2638, 0.3246, 0.3208

Tritanomaly

75.0715, 0.3184, 0.3146

Monochromacy



Original Color

75.0832, 0.3216, 0.3218

Achromatopsia

76.0525, 0.3127, 0.3290

Achromatomaly

75.7912, 0.3163, 0.3269

CSS Examples

Text

The CSS property to change the color of the text to Yxy 75.0832, 0.3216, 0.3218 is called "color". The color property can be set on classes, ids or directly on the HTML element.

This example shows how text in the color `rgb(239, 220, 227)` looks like.

```
.text, #text, p{  
    color:rgb(239, 220, 227)  
}
```

If you want to add a text shadow in that color use the text-shadow property, you can generate a text shadow directly with our [CSS Text Shadow Generator](#).

Here you see how black text with a 4 pixel rgb(239, 220, 227) colored shadow looks like.

```
.shadow{ text-shadow: 4px 4px 2px rgb(239, 220, 227) }
```

Border

The CSS property to change the border of an element to Yxy 75.0832, 0.3216, 0.3218 is called "border". The border property can be set on classes, ids or directly on the HTML element.

This example shows the color as border, it can be applied via the CSS property "border" or "border-color".

```
.border, #border, table{ border:4px solid rgb(239, 220, 227) }
```

If only the border color should be changed use the property `border-color`.

```
.border{ border-color:rgb(239, 220, 227) }
```

If you want to add a box shadow in that color use:

Here you see how a box with a 4 pixel `rgb(239, 220, 227)` colored shadow looks like.

```
.boxshadow{ -moz-box-shadow:4px 4px 4px  
4px rgb(239, 220, 227); -webkit-box-  
shadow:4px 4px 4px 4px rgb(239, 220, 227);  
box-shadow:4px 4px 4px 4px rgb(239, 220,  
227) }
```


Background

The CSS property to change the background color of an element to Yxy 75.0832, 0.3216, 0.3218 is called "background". The background property can be set on classes, ids or directly on the HTML element.

```
.background, #background, body{  
background: rgb(239, 220, 227) }
```

If only the background color should be changed can be used:

```
.background{ background-color: rgb(239,  
220, 227) }
```

This example shows the color as background, it is applied via the CSS property "background".

To optimize and compress your CSS code, you can use our [online CSS compressor and optimizer](#) based on csstidy. If you want to create a linear or radial gradient as background or border, check our [CSS Gradient Generator](#).

Hey! You found this booklet interesting? Support Converting Colors with the new Membership Option!

The pro membership hides all ads, plus gives you double the colors in the color bucket, and more awesome pro features!

[Learn more, Memberships starting at \\$2.50/m!](#)

**Follow me
on Twitter!**

@ConvertingColor