

# Converting Colors

$Yxy(76.6383, 0.3233, 0.3270)$

Have a look what the booklet for  
Yxy(76.6383, 0.3233, 0.3270)  
contains.

<b>Yxy(76.7369, 0.3235, 0.3270)</b> .....	3
<b>Conversions</b> .....	4
<b>Details</b> .....	6
<b>Harmonies</b> .....	12
<b>Previews</b> .....	24
<b>Color Blindness Simulation</b> .....	27
<b>CSS Examples</b> .....	30

# Color

**Yxy(76.7369, 0.3235, 0.3270)**

# Conversions

## Conversions Part 1

Format	Color
Hex	F0DFE1
RGB	240, 223, 225
RGB Percent	94%, 87%, 88%
CMY	0.0587, 0.1255, 0.1178
CMYK	0.00, 0.07, 0.06, 0.06
HSL	353°, 36%, 91%
HSV	353°, 7%, 94%
XYZ	75.9156, 76.7369, 82.0170
YIQ	228.3110, 9.4900, 4.2260

# Conversions

## Conversions Part 2

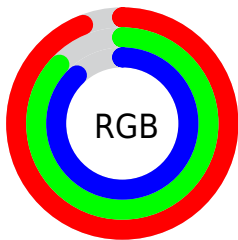
<b>Format</b>	<b>Color</b>
<b>R<sub>YB</sub></b>	240, 223, 225
Decimal	15785953
CIE Lab	90.20, 6.15, 1.13
CIE LCh	90, 6.253, 10.405
Yxy	76.7369, 0.3235, 0.3270
Android (android.graphics.Color)	4293976033 (0xFFFF0DFE1)
YUV	228.3110, -1.6323, 10.2513
Hunter-Lab	87.5996, 1.3924, 5.8082

# Details

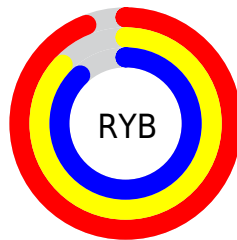
The Yxy color **76.7369, 0.3235, 0.3270** is a light color, and the websafe version is hex **CCCCCC**. A complement of this color would be **84.2007, 0.3029, 0.3310**, and the grayscale version is **77.8323, 0.3127, 0.3290**.

A 20% lighter version of the original color is **100.0000, 0.3127, 0.3290**, and **41.0979, 0.3258, 0.3264** is the 20% darker color. If you saturate the color by 10%, you get **63.7227, 0.3419, 0.3240**, and if you desaturate by 10%, it is **91.7201, 0.3088, 0.3298**.

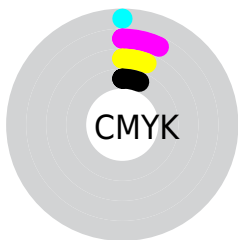
# Distribution



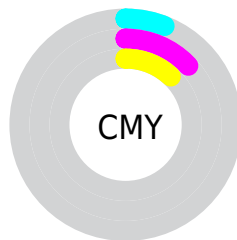
- Red (94%)
- Green (87%)
- Blue (88%)



- Red (94%)
- Yellow (87%)
- Blue (88%)



- Cyan (0%)
- Magenta (7%)
- Yellow (6%)
- Black (6%)




- Cyan (6%)
- Magenta (13%)
- Yellow (12%)

# Brightness & Saturation Gradients

These gradients show how the Yxy color 76.7369, 0.3235, 0.3270 changes by changing the brightness by 10 percent. The first figure shows a shift by +10% for each color and the second figure -10%.

Similar to the brightness gradients but the following saturation gradients show a change of the Yxy color 76.7369, 0.3235, 0.3270 by changing the saturation by 10% instead.




 76.7369, 0.3235,  
0.3270

 76.7369, 0.3235,  
0.3270

483.8665, 0.3185,  
0.3279

 57.0370, 0.3246,  
0.3268


128.7680, 0.3218,  
0.3273

 41.0349, 0.3260,  
0.3265

161.8680, 0.3211,  
0.3275

 28.3464, 0.3278,  
0.3262


200.2034, 0.3205,  
0.3276

 18.5869, 0.3300,  
0.3257

244.1588, 0.3200,  
0.3277

 11.3722, 0.3331,  
0.3251

294.1183, 0.3196,  
0.3277

 6.3178, 0.3376,  
0.3242

350.4665, 0.3192,

 3.0392, 0.3445,

0.3278

0.3228

413.5878, 0.3189,  
0.3279

■ 1.1523, 0.3568,  
0.3201

■ 0.0222, 0.8853,  
0.1147

■ 76.7369, 0.3235,  
0.3270

■ 76.7369, 0.3235,  
0.3270

■ 63.7227, 0.3419,  
0.3240

■ 91.7201, 0.3088,  
0.3298

■ 52.5860, 0.3647,  
0.3209

■ 97.2699, 0.3036,  
0.3290

■ 43.2431, 0.3929,  
0.3178

■ 35.6001, 0.4271,  
0.3150

■ 29.5546, 0.4671,  
0.3130

■ 24.9929, 0.5114,  
0.3123

■ 21.7866, 0.5560,  
0.3136

■ 19.7853, 0.5950,  
0.3171

■ 18.7958, 0.6226,  
0.3223

# Harmonies

## Analogous

The Analogous color harmony consists of three colors that are next to each other on the color wheel.



76.7369, 0.3171, 0.3211



76.7369, 0.3235, 0.3270



76.7369, 0.3270, 0.3335

# Triad

The Triadic color harmony groups three colors that are evenly spaced from another and form a triangle on the color wheel.



76.7369, 0.3235, 0.3270



76.7369, 0.3157, 0.3411



76.7369, 0.2991, 0.3190

# Complementary

The Complementary color scheme is a pair of colors which are on the opposite of each other on the color wheel.



76.7369, 0.3235, 0.3270



84.2007, 0.3029, 0.3310

# Split Complementary

Split-complementary colors differ from the complementary color scheme. The scheme consists of three colors, the original color and two neighbors of the complement color.



76.7369, 0.2987, 0.3243



76.7369, 0.3235, 0.3270



76.7369, 0.3082, 0.3371

# Square

The Square scheme is like the rectangle color scheme, but the four colors are evenly spaced on the color wheel.



76.7369, 0.3235, 0.3270



76.7369, 0.3224, 0.3417



76.7369, 0.3020, 0.3309



76.7369, 0.3030, 0.3165

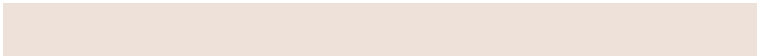


# Rectangle

The Rectangle color scheme consists of four colors that form a rectangle on the color wheel.



76.7369, 0.3235, 0.3270



76.7369, 0.3271, 0.3373



76.7369, 0.3020, 0.3309



76.7369, 0.2985, 0.3205

# Sweetspot

The Sweet Spot groups the original color and five complimentary colors.



76.7403, 0.3235, 0.3270



96.5018, 0.3156, 0.3284



77.2531, 0.3121, 0.3116



20.6920, 0.3155, 0.3285



0.0000, 0.0000, 0.0000



21.4041, 0.3127, 0.3290



# Same Dimension

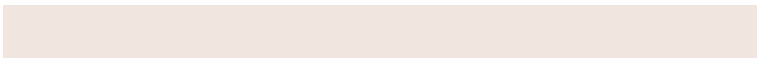
The Same Dimension uses a secret algorithm to generate beautiful new colors.



76.7403, 0.3235, 0.3270



84.9819, 0.3267, 0.3264



80.1888, 0.3242, 0.3358



15.7884, 0.3275, 0.3263



10.1957, 0.6260, 0.3222

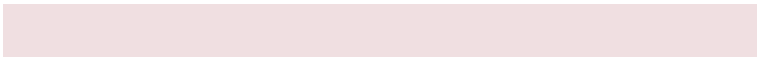


0.8578, 0.5987, 0.3072

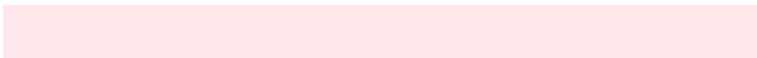


# Inverse Universe

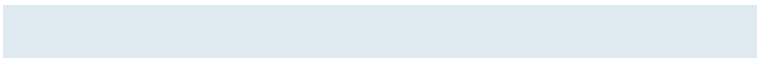
The Inverse Universe completely reimagines the original color for something new.



76.7403, 0.3235, 0.3270



84.9819, 0.3267, 0.3264



80.5425, 0.3018, 0.3221



15.7884, 0.3275, 0.3263



10.1957, 0.6260, 0.3222

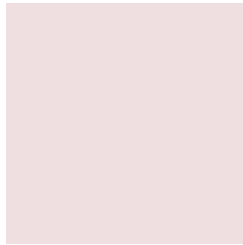


0.8578, 0.5987, 0.3072



# Previews

## White Background



This preview shows how the Yxy color 76.7369, 0.3235, 0.3270 looks on a white background.

## Color Contrast Check

Large Text (above 18pt) WCAG AA × Fail

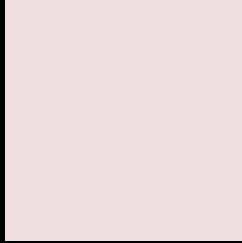
Any Text WCAG AA × Fail

Large Text (above 18pt) WCAG AAA × Fail

Any Text WCAG AAA × Fail



# Black Background



This preview shows how the Yxy color 76.7369, 0.3235, 0.3270 looks on a black background.

## Color Contrast Check

Large Text (above 18pt) WCAG AA ✓ Pass

Any Text WCAG AA ✓ Pass

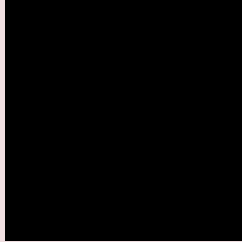
Large Text (above 18pt) WCAG AAA ✓ Pass

Any Text WCAG AAA ✓ Pass

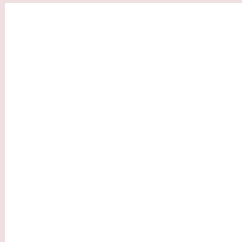
If you want to check with other color combinations, try the [Color Contrast Checker](#).

**Yxy 76.7369, 0.3235, 0.3270**

## **Background**



This preview shows how black text looks on a background with the Yxy color 76.7369, 0.3235, 0.3270.

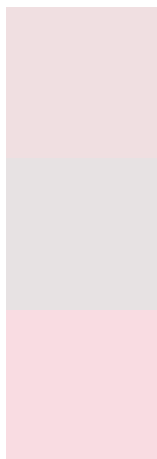


This preview shows how white text looks on a background with the Yxy color 76.7369, 0.3235, 0.3270.

# Color Blindness Simulation

Color vision deficiency is a very complex topic, and I could not describe the different causes any better than Wikipedia does, so if you want to learn more, you should check out their [article about color blindness](#).

## Dichromacy



### Original Color

76.7369, 0.3235, 0.3270

### Protanopia

76.9277, 0.3155, 0.3280

### Deuteranopia

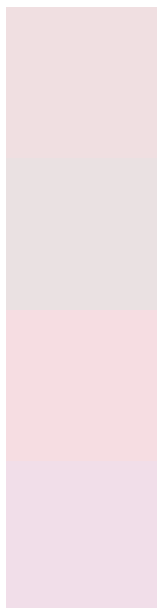
76.8171, 0.3296, 0.3230



## Tritanopia

76.7632, 0.3163, 0.3117

# Trichromacy



## Original Color

76.7369, 0.3235, 0.3270

## Protanomaly

76.8338, 0.3184, 0.3280

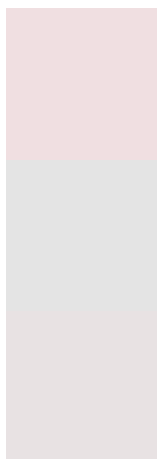
## Deuteranomaly

76.7967, 0.3273, 0.3239

## Tritanomaly

76.8265, 0.3189, 0.3177

# Monochromacy



## Original Color

76.7369, 0.3235, 0.3270

## Achromatopsia

77.5822, 0.3127, 0.3290

## Achromatomaly

77.0946, 0.3162, 0.3280

# CSS Examples

## Text

The CSS property to change the color of the text to Yxy 76.7369, 0.3235, 0.3270 is called "color". The color property can be set on classes, ids or directly on the HTML element.

This example shows how text in the color `rgb(240, 223, 225)` looks like.

```
.text, #text, p{  
    color:rgb(240, 223, 225)  
}
```

If you want to add a text shadow in that color use the text-shadow property, you can generate a text shadow directly with our [CSS Text Shadow Generator](#).

Here you see how black text with a 4 pixel rgb(240, 223, 225) colored shadow looks like.

```
.shadow{ text-shadow: 4px 4px 2px rgb(240, 223, 225) }
```

## Border

The CSS property to change the border of an element to Yxy 76.7369, 0.3235, 0.3270 is called "border". The border property can be set on classes, ids or directly on the HTML element.

This example shows the color as border, it can be applied via the CSS property "border" or "border-color".

```
.border, #border, table{ border:4px solid rgb(240, 223, 225) }
```

If only the border color should be changed use the property `border-color`.

```
.border{ border-color:rgb(240, 223, 225) }
```

If you want to add a box shadow in that color use:

Here you see how a box with a 4 pixel `rgb(240, 223, 225)` colored shadow looks like.

```
.boxshadow{ -moz-box-shadow:4px 4px 4px  
4px rgb(240, 223, 225); -webkit-box-  
shadow:4px 4px 4px 4px rgb(240, 223, 225);  
box-shadow:4px 4px 4px 4px rgb(240, 223,  
225) }
```



# Background

The CSS property to change the background color of an element to Yxy 76.7369, 0.3235, 0.3270 is called "background". The background property can be set on classes, ids or directly on the HTML element.

```
.background, #background, body{  
background: rgb(240, 223, 225) }
```

If only the background color should be changed can be used:

```
.background{ background-color: rgb(240,  
223, 225) }
```

This example shows the color as background, it is applied via the CSS property "background".

To optimize and compress your CSS code, you can use our [online CSS compressor and optimizer](#) based on csstidy. If you want to create a linear or radial gradient as background or border, check our [CSS Gradient Generator](#).

Hey! You found this booklet interesting? Support Converting Colors with the new Membership Option!

The pro membership hides all ads, plus gives you double the colors in the color bucket, and more awesome pro features!

**[Learn more, Memberships starting at \\$2.50/m!](#)**

**Follow me  
on Twitter!**

@ConvertingColor